

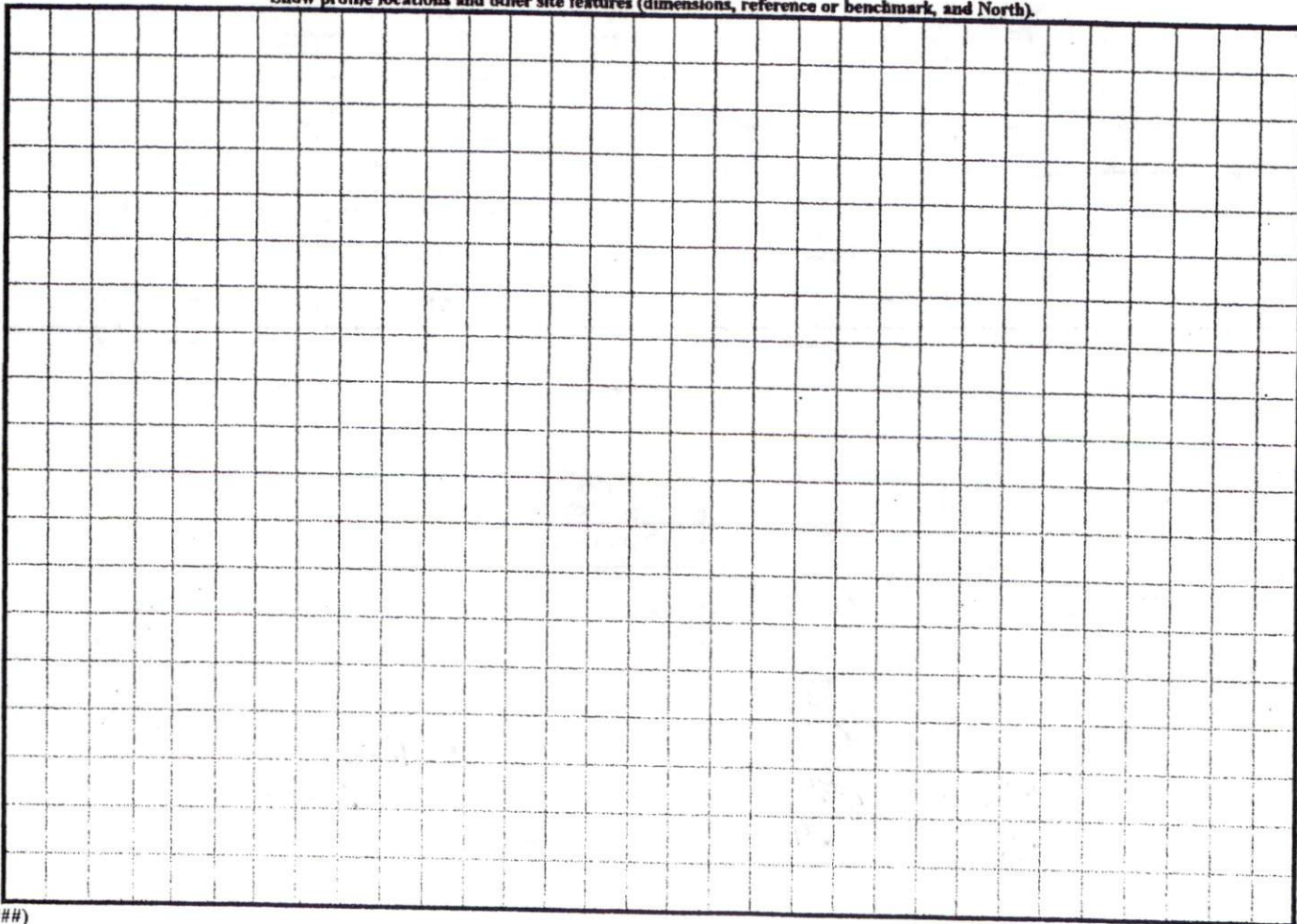
COMMENTS: _____

<u>LANDSCAPE POSITIONS</u>	<u>GROUP</u>	<u>TEXTURES</u>	<u>.1955 LTAR</u>	<u>CONSISTENCE MOIST</u>	<u>WET</u>
R-RIDGE	I	S-SAND	1.2 - 0.8	VFR-VERY FRIABLE	NS-NON-STICKY
S-SHOULDER SLOPE		LS-LOAMY SAND			
L-LINEAR SLOPE	II	SL-SANDY LOAM	0.8 - 0.6	FR-FRIABLE	SS-SLIGHTLY STICKY
FS-FOOT SLOPE		L-LOAM		FI-FIRM	S-STICKY
N-NOSE SLOPE				VFI-VERY FIRM	VS-VERY STICKY
H-HEAD SLOPE	III	SI-SILT-	0.6 - 0.3	EFI-EXTREMELY FIRM	NP-NON-PLASTIC
CC-CONCLAVE SLOPE		SIL-SILT LOAM			SP-SLIGHTLY STICKY
CV-CONVEX SLOPE		CL-CLAY LOAM			P-PLASTIC
T-TERRACE		SCL-SANDY CLAY LOAM			VP-VERY PLASTIC
FP-FLOOD PLAN		SICL-SILTY CLAY LOAM			
	IV	SIC-SILTY CLAY	0.4 - 0.1		
		C-CLAY			
		SC-SANDY CLAY			

STRUCTURE
 SG-SINGLE GRAIN
 M-MASSIVE
 CR-CRUMB
 GR-GRANULAR
 SBK-SUBANGULAR BLOCKY
 ABK-ANGULAR BLOCKY
 PL-PLATY
 PR-PRISMATIC

MINERALOGY
 SLIGHTLY EXPANSIVE
 EXPANSIVE

Show profile locations and other site features (dimensions, reference or benchmark, and North).



PLOT PLAN FOR
COMFORT HOMES
BLACK RIVER TOWNSHIP
HARNETT COUNTY
NORTH CAROLINA

Curve	Radius	Length	Chord	Chord Bear.
C1	1825.00'	51.56'	51.56'	N 40°55'00" W
C2	975.00'	48.45'	48.44'	N 40°18'09" W

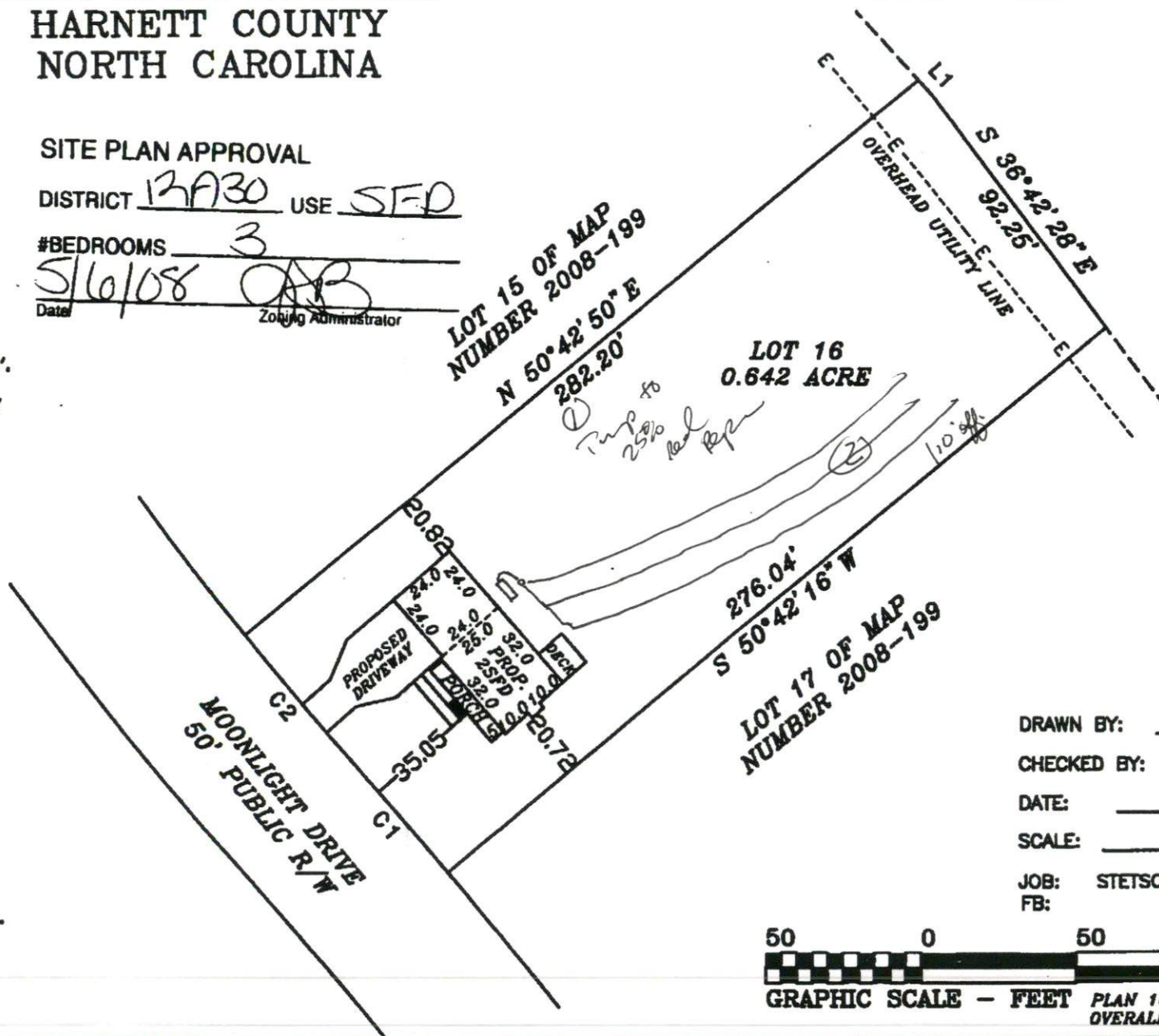
Course	Bearing	Distance
L1	S 41°40'34" E	7.78'

SITE PLAN APPROVAL

DISTRICT 13A30 USE SFD

#BEDROOMS 3
Date 5/6/08 AB
Zoning Administrator

JB DIVISION,
193-196 AND
199-200.
TE METHOD.
WITHIN 2000'.
NETT COUNTY
MS.



DRAWN BY: DOW & BGW
CHECKED BY: DOW
DATE: 03-31-2008
SCALE: 1" = 50'
JOB: STETSON CF
FB:



RANGE

RD.

ION,

SOC., P.A.

