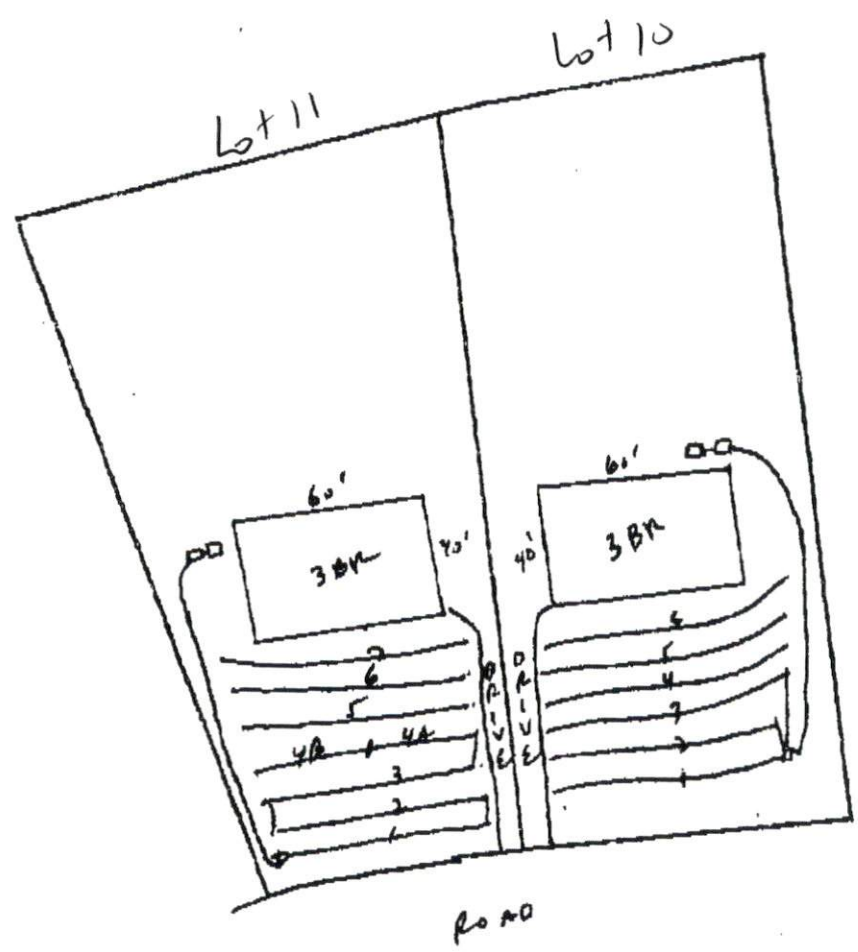


# Southeastern Soil & Environmental Associates, Inc.

P.O. Box 9321  
Fayetteville, NC 28311  
Phone/Fax (910) 822-4540  
Email mike@southeasternsoil.com

Tingen Point  
Proposed Septic  
Lots 10, 11



EACH HOUSE HAS 80' FRONT SETBACK TO FRONT

1" = 60'

SOUTHEASTEN SOIL & ENVIRONMENTAL ASSOC, INC.

PROPOSED SUBSURFACE WASTE DISPOSAL SYSTEM DETAIL SHEET

SUBDIVISION Tinge Point

LOT 10

INITIAL SYSTEM pump to approved 25% reduction REPAIR pump to approved 25% reduction <sup>DRIP</sup>

DISTRIBUTION Serial

DISTRIBUTION Serial

BENCHMARK 100.0

LOCATION Front corner 10/11

NO. BEDROOMS 3

Proposed ETAP = 0.4 gpd/ft<sup>2</sup>

<u>LINE</u>	<u>FLAG COLOR</u>	<u>ELEVATION</u>	<u>ACTUAL LENGTH</u>
-------------	-------------------	------------------	----------------------

Frontal

1	R	97.33	80'
2	W	96.58	80'
3	R	95.98	80'
4A	W	95.00	40' <sup>28' AVAIL</sup>
4B	W	95.00	40'
5	R	93.84	80'
6	W	92.67	80'
7	R	91.42	80' <sup>28' AVAIL</sup>

BY 05/2008

DATE Mike Eaker