



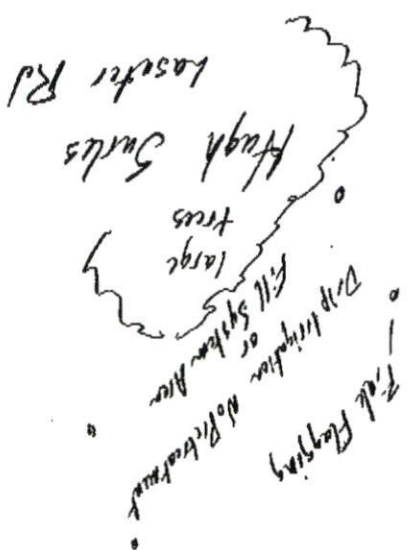
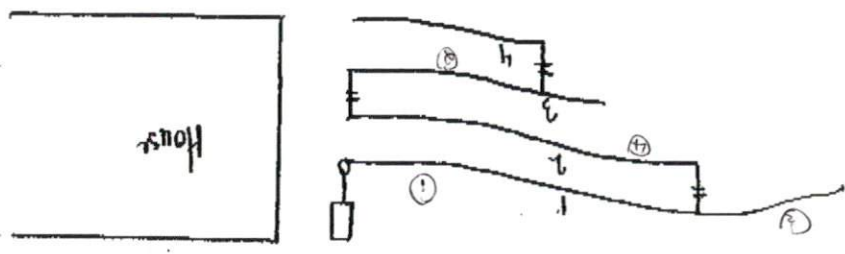
0-29" GS
16-29" SBK SCL
0-16" GS
16-29" SBK SCL
0-29" GS
16-29" SBK SCL

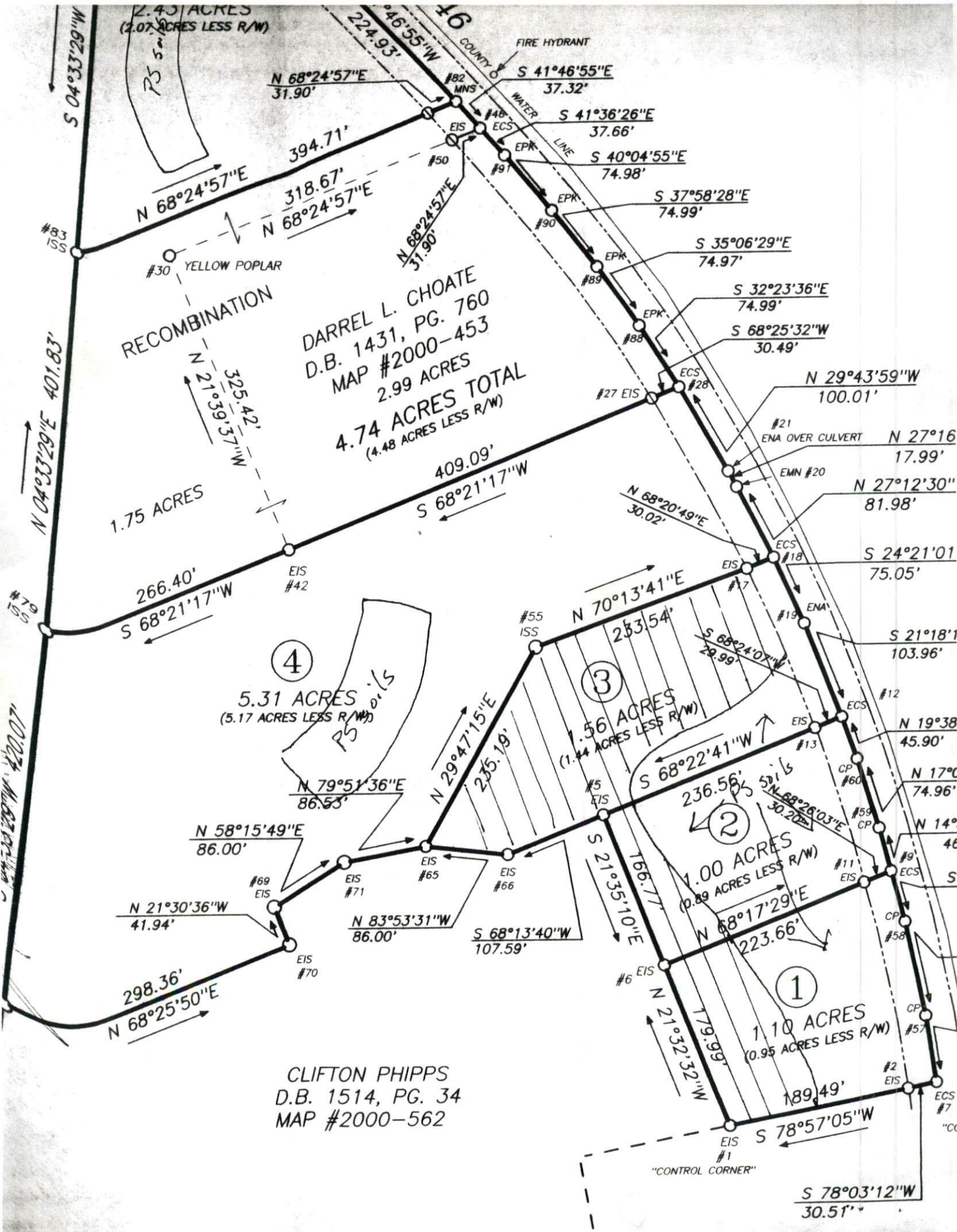
0-10" GS
10-14" SBK SCL
14-20" SBK SCL
0-12" GS
12-16" SBK SCL
16" SBK SCL

385' of Receipts
System Includes
Line for Backflow
in Reverse
Direction Only
12-14" DEF
Minimum of 6" of
Cover Needed

Soils greater than 24"
System can accommodate 360 gpd
, 31 LTR for conversion to
. 23 Accepted 25% Reduction
NIST

1	P/C	135
2	R	110
3	Y	80
4	B	60
		<u>385' total</u>





2.43 ACRES
(2.07 ACRES LESS R/W)

DARREL L. CHOATE
D.B. 1431, PG. 760
MAP #2000-453
2.99 ACRES
4.74 ACRES TOTAL
(4.48 ACRES LESS R/W)

5.31 ACRES
(5.17 ACRES LESS R/W)

1.56 ACRES
(1.44 ACRES LESS R/W)

1.00 ACRES
(0.89 ACRES LESS R/W)

1.10 ACRES
(0.95 ACRES LESS R/W)

CLIFTON PHIPPS
D.B. 1514, PG. 34
MAP #2000-562

