

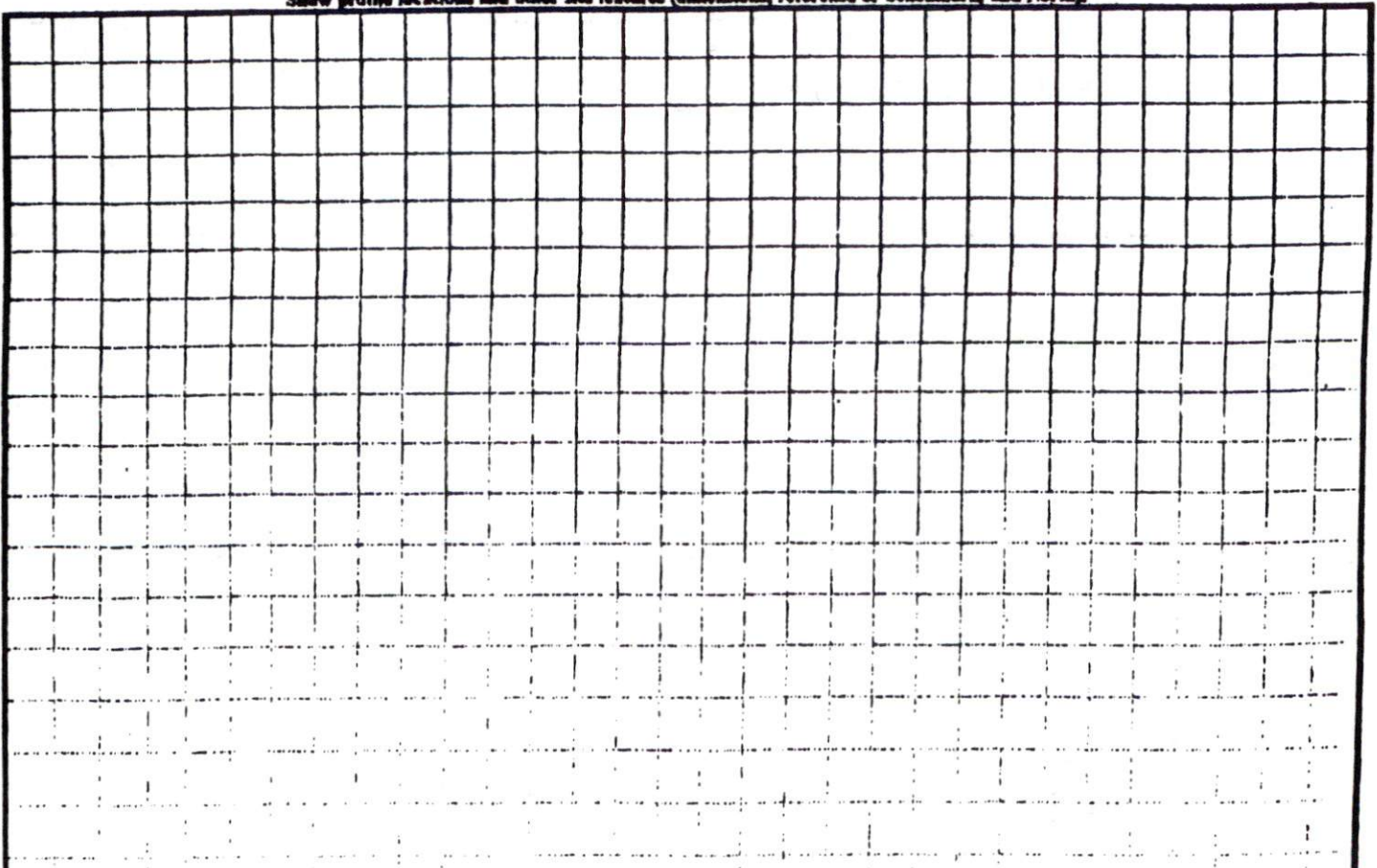
COMMENTS: _____

<u>LANDSCAPE POSITIONS</u>	<u>GROUP</u>	<u>TEXTURES</u>	<u>.1955 LTAR</u>	<u>CONSISTENCE MOIST</u>	<u>WET</u>
R-RIDGE S-SHOULDER SLOPE L-LINEAR SLOPE FS-FOOT SLOPE N-NOSE SLOPE H-HEAD SLOPE CC-CONCLAVE SLOPE CV-CONVEX SLOPE T-TERRACE FP-FLOOD PLAN	I	S-SAND LS-LOAMY SAND	1.2 - 0.8	VFR-VERY FRIABLE FR-FRIABLE	NS-NON-STICKY SS-SLIGHTLY STICKY
	II	SL-SANDY LOAM L-LOAM	0.8 - 0.6	FI-FIRM VFI-VERY FIRM EFI-EXTREMELY FIRM	S-STICKY VS-VERY STICKY NP-NON-PLASTIC SP-SLIGHTLY STICKY P-PLASTIC VP-VERY PLASTIC
	III	SI-SILT- SIL-SILT LOAM CL-CLAY LOAM SCL-SANDY CLAY LOAM SICL-SILTY CLAY LOAM	0.6 - 0.3		
	IV	SIC-SILTY CLAY C-CLAY SC-SANDY CLAY	0.4 - 0.1		

STRUCTURE
 SG-SINGLE GRAIN
 M-MASSIVE
 CR-CRUMB
 GR-GRANULAR
 SBK-SUBANGULAR BLOCKY
 ABK-ANGULAR BLOCKY
 PL-PLATY
 PR-PRISMATIC

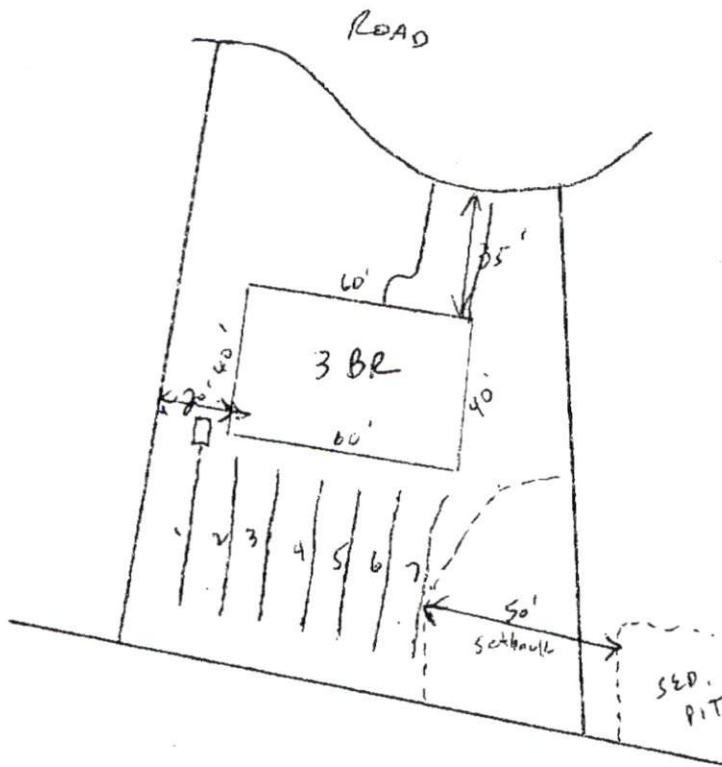
MINERALOGY
 SLIGHTLY EXPANSIVE
 EXPANSIVE

Show profile locations and other site features (dimensions, reference or benchmark, and North).



Southeastern Soil & Environmental Associates, Inc.

P.O. Box 9321
Fayetteville, NC 28311
Phone/Fax (910) 822-4540
Email mike@southeasternsoil.com



Woodshire LOT 223

Proposed Sept

1" = 50'

SOUTHEASTEN SOIL & ENVIRONMENTAL ASSOC, INC.

PROPOSED SUBSURFACE WASTE DISPOSAL SYSTEM DETAIL SHEET

SUBDIVISION Woodshire

LOT 223

INITIAL SYSTEM Approved 25% reduction

REPAIR PPBPS

DISTRIBUTION serial

DISTRIBUTION serial

BENCHMARK 100.0

LOCATION rear corner 222/224

NO. BEDROOMS 3

proposed CTAR = 0.7 gpd / ft²

<u>LINE</u>	<u>FLAG COLOR</u>	<u>ELEVATION</u>	<u>ACTUAL LENGTH</u>
1	O	99.84	40'
2	R	99.75	40'
3	O	99.50	40'
4	R	99.24	40'
			<u>160'</u>
5	O	99.17	40'
6	R	98.20	40'
7	O	98.25	40'
			<u>120'</u>

BY M EAKER

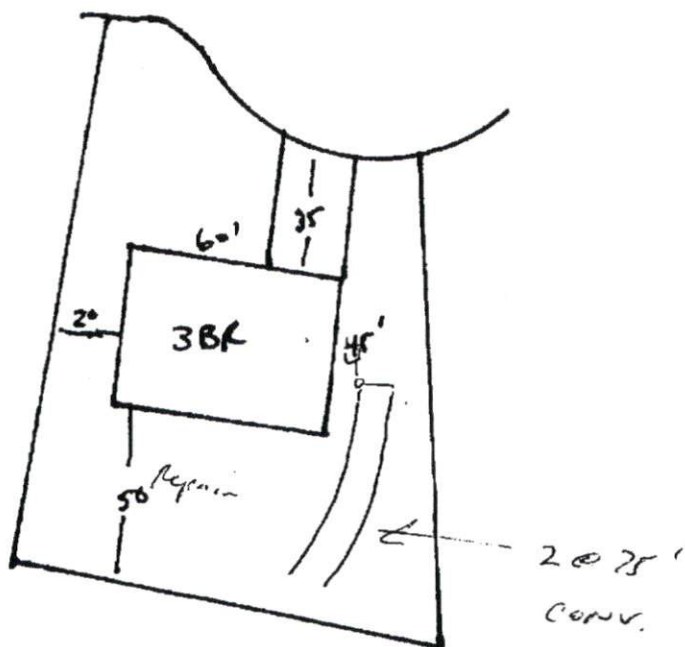
DATE 06/2008

Note

* 2/4/09.

Sediment pit has been removed on adjoining lot. REPAIR CAN NOW BE INNOVATIVE 25% REDUCTION

Woodshw
Lot 223



1" = 50'