

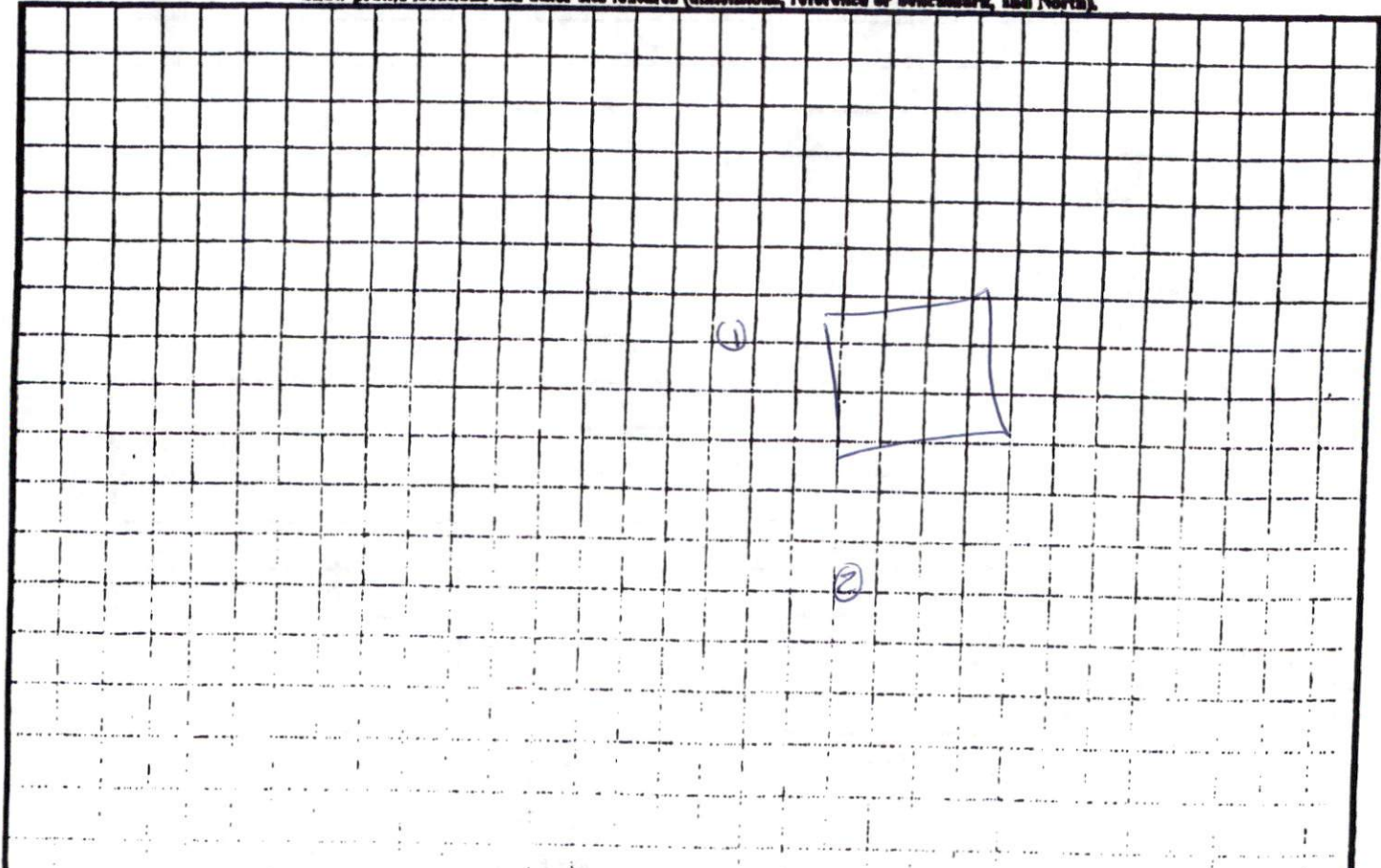
COMMENTS: _____

<u>LANDSCAPE POSITIONS</u>	<u>GROUP</u>	<u>TEXTURES</u>	<u>.1955 LTAR</u>	<u>CONSISTENCE MOIST</u>	<u>WET</u>
R-RIDGE S-SHOULDER SLOPE L-LINEAR SLOPE	I	S-SAND LS-LOAMY SAND	1.2 - 0.8	VFR-VERY FRIABLE FR-FRIABLE	NS-NON-STICKY SS-SLIGHTLY STICKY
FS-FOOT SLOPE N-NOSE SLOPE H-HEAD SLOPE	II	SL-SANDY LOAM L-LOAM	0.8 - 0.6	FI-FIRM VFI-VERY FIRM	S-STICKY VS-VERY STICKY
CC-CONCLAVE SLOPE CV-CONVEX SLOPE T-TERRACE FP-FLOOD PLAN	III	SI-SILT- SIL-SILT LOAM CL-CLAY LOAM SCL-SANDY CLAY LOAM SICL-SILTY CLAY LOAM	0.6 - 0.3	EFI-EXTREMELY FIRM	NP-NON-PLASTIC SP-SLIGHTLY STICKY P-PLASTIC VP-VERY PLASTIC
	IV	SIC-SILTY CLAY C-CLAY SC-SANDY CLAY	0.4 - 0.1		

STRUCTURE
 SG-SINGLE GRAIN
 M-MASSIVE
 CR-CRUMB
 GR-GRANULAR
 SBK-SUBANGULAR BLOCKY
 ABK-ANGULAR BLOCKY
 FL-PLATY
 PR-PRISMATIC

MINERALOGY
 SLIGHTLY EXPANSIVE
 EXPANSIVE

Show profile locations and other site features (dimensions, reference or benchmark, and North).



Harnett County Public Utilities

Plot Plan PreApproval Only

NOT FOR CONSTRUCTION

Water is available to this site via
a 6" line located on SR 1709

Billy Edward Norris
Signature Date 1/07/08

NOTE:
No N.C.G.S. Mo
or State Agency
to exist in pairs
In lieu of such
properties, and
were used as ref
Previously reco
establish bearing

①

Billy Edward Norris

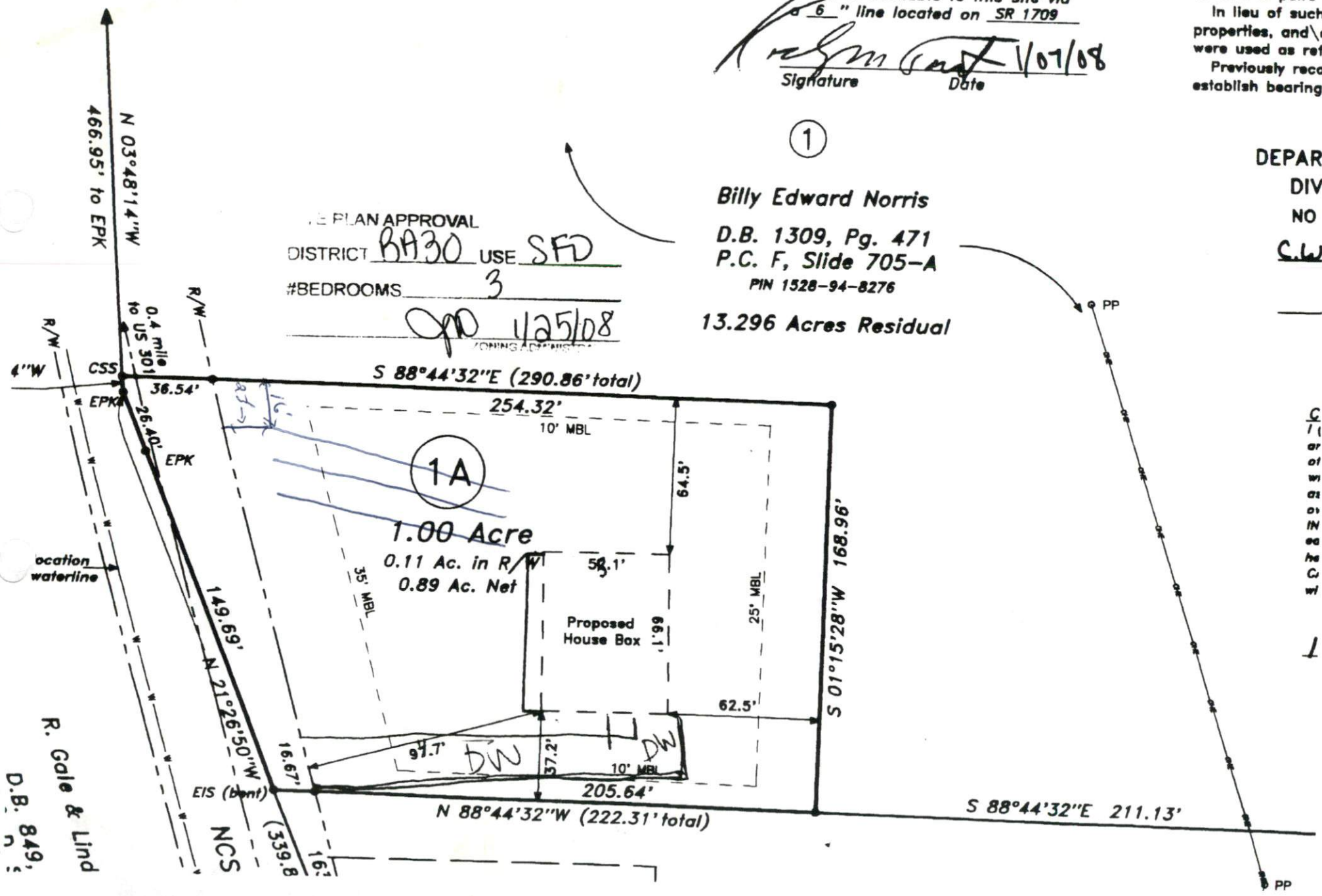
D.B. 1309, Pg. 471
P.C. F, Slide 705-A

PIN 1528-94-8276

13.296 Acres Residual

DEPAR
DIV
NO
C.W

PLAT APPROVAL
DISTRICT BA30 USE SFD
#BEDROOMS 3
OPD 1/25/08



C
/ l
or
of
w
as
on
IN
ea
he
C
w
1

R. Gale & Lind
D.B. 849