

SOUTHEASTEN SOIL & ENVIRONMENTAL ASSOC, INC.

PROPOSED SUBSURFACE WASTE DISPOSAL SYSTEM DETAIL SHEET

SUBDIVISION Forest Oaks

LOT 205

INITIAL SYSTEM Approved 25% reduction

REPAIR Approved 25% reduction

DISTRIBUTION Serial

DISTRIBUTION Serial

BENCHMARK 100.0

LOCATION Front corner 205/206

NO. BEDROOMS 3

proposed LTAR = 0.35 gal/ft²

<u>LINE</u>	<u>FLAG COLOR</u>	<u>ELEVATION</u>	<u>ACTUAL LENGTH</u>
1	O	100.67	46'
2	W	100.50	46'
3	B	100.50	46'
4	Y	100.50	46'
5	O	100.50	46'
6	W	100.42	46'
			276'
7	B	100.42	46'
8	Y	100.33	110'
9	O	100.25	110'
			266'

Initial

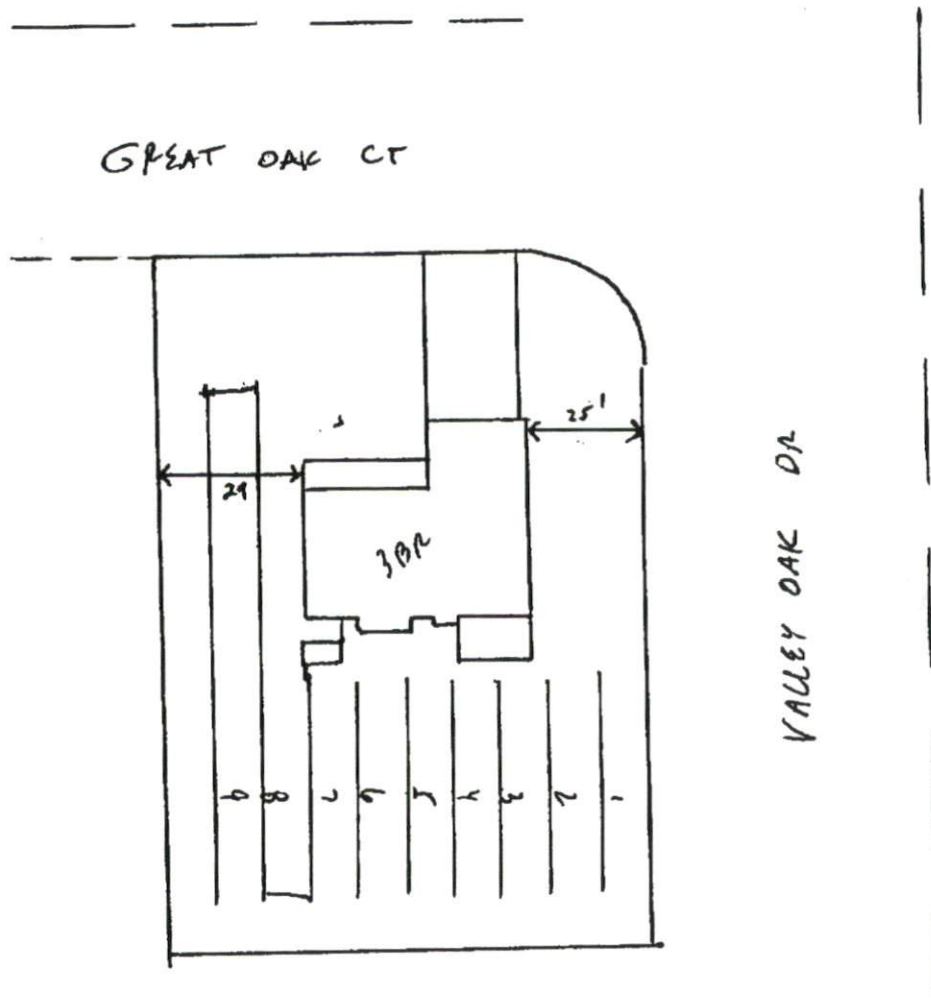
BY M EAKER

DATE 01/2008

SHIFT HOUSE SO THERE IS 29 FEET TO SOUTH SIDE LINE

Southeastern Soil & Environmental Associates, Inc.

P.O. Box 9321
Fayetteville, NC 28311
Phone/Fax (910) 822-4540
Email meaker3851@aol.com



FOREST OAKS PHASE 3

LOT 205

PROPOSED SEPTIC LAYOUT

③ BEDROOM MAX

SHIFT HOUSE AS SHOWN