

#0750017405

SOUTHEASTERN SOIL & ENVIRONMENTAL ASSOC., INC.

PROPOSED SUBSURFACE WASTE DISPOSAL SYSTEM DETAIL SHEET

SUBDIVISION: HUNTERS POINT

LOT 18

INITIAL SYSTEM: APPROVED 25% REDUCTION ^{pump to}

REPAIR: APPROVED 25% REDUCT ^{pump to}

DISTRIBUTION: SERIAL

DISTRIBUTION SERIAL

BENCHMARK: 100.0

LOCATION TOP WATER METER

NO. BEDROOMS: 3

LTAR 0.4 GPO/FT²

LINE	FLAG COLOR	ELEVATION	LENGTH
1	P	100.50	40'
2	Y	99.84	80'
3	B	99.08	95'
4A	W	97.34	15'
			<u>230'</u>
4B	W	97.34	100'
5	P	96.34	115'
6	B	95.42	60'
			<u>225' AVAILABLE</u>

Initial system

BY M. EAKER

DATE 09/2016

TYPICAL PROFILE

0-18 CS (VF, us.)
18-40 + SCL (F/F, 1614)
C- 2 > 34"
 INSTALLED AT 18"

THERE SHALL BE NO GRADING

RUTTING CUTTING OR OTHER SOIL

DISTURBANCE IN SEPTIC AREA

ANY DISTURBANCE MAY CAUSE A SITE

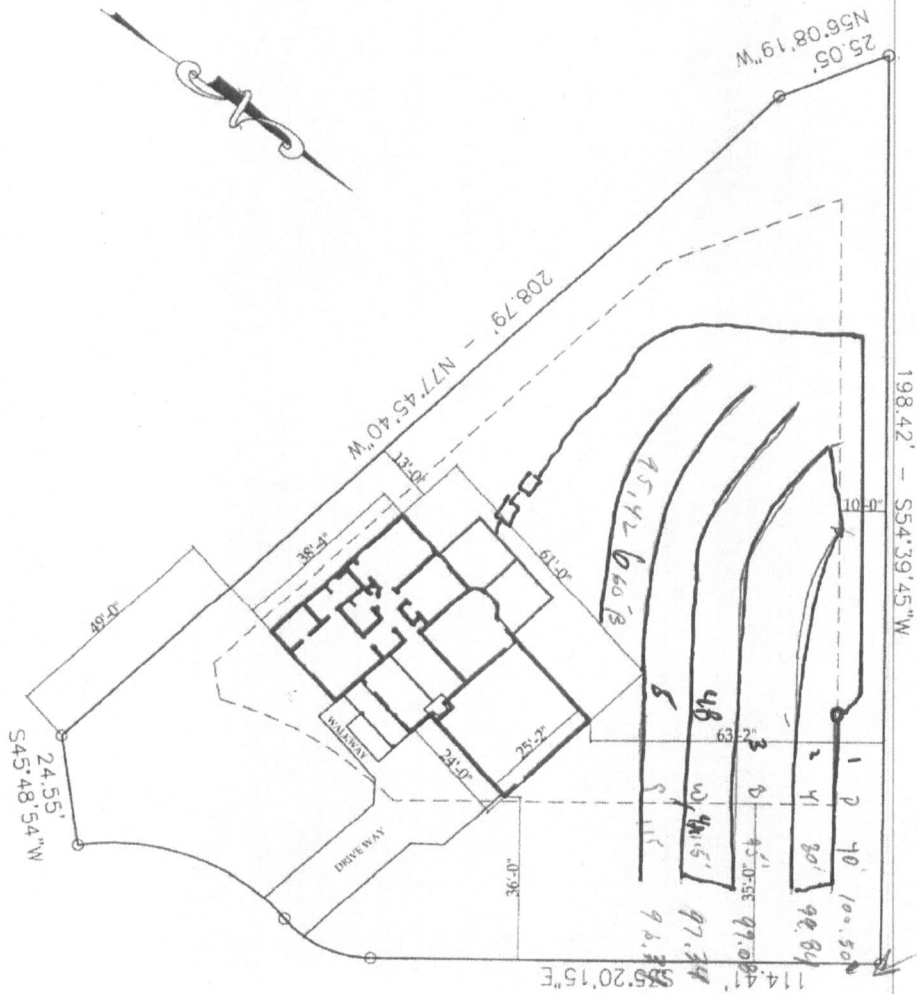
TO BECOME UNSUITABLE

IMPERVIOUS CALCULATIONS

LOT = 21780 SF
PROPOSED HOUSE - 2273 SF
PROPOSED DRIVE - 929 SF
PROPOSED TOTAL - 3202 SF
IMPERVIOUS PERCENTAGE = 14.7%



STANCIL BUILDERS, INC.



100.50
99.84
99.08
97.34
96.34
95.42

Lot 18 HUNTERS POINT
44 HENRY RIFLE LANE
ANGIER, NC 27501
Pin 0691-58-7055.000
Deed Book 2317 Page 744
Book of Maps 2006 Page 1128

LOT 18 HUNTERS POINT

SCALE 1" = 40'-0"