

COMMENTS: _____

<u>LANDSCAPE POSITIONS</u>	<u>GROUP</u>	<u>TEXTURES</u>	<u>.1955 LTAR</u>	<u>CONSISTENCE MOIST</u>	<u>WET</u>
R-RIDGE	I	S-SAND	1.2 - 0.8	VFR-VERY FRIABLE	NS-NON-STICKY
S-SHOULDER SLOPE		LS-LOAMY SAND			
L-LINEAR SLOPE	II	SL-SANDY LOAM	0.8 - 0.6	FR-FRIABLE	SS-SLIGHTLY STICKY
FS-FOOT SLOPE		L-LOAM		FI-FIRM	S-STICKY
N-NOSE SLOPE				VFI-VERY FIRM	VS-VERY STICKY
H-HEAD SLOPE	III	SI-SILT-	0.6 - 0.3	EFI-EXTREMELY FIRM	NP-NON-PLASTIC
CC-CONCLAVE SLOPE		SIL-SILT LOAM			SP-SLIGHTLY STICKY
CV-CONVEX SLOPE		CL-CLAY LOAM			P-PLASTIC
T-TERRACE		SCL-SANDY CLAY LOAM			VP-VERY PLASTIC
FP-FLOOD PLAN	IV	SIC-SILTY CLAY	0.4 - 0.1		
		C-CLAY			
		SC-SANDY CLAY			

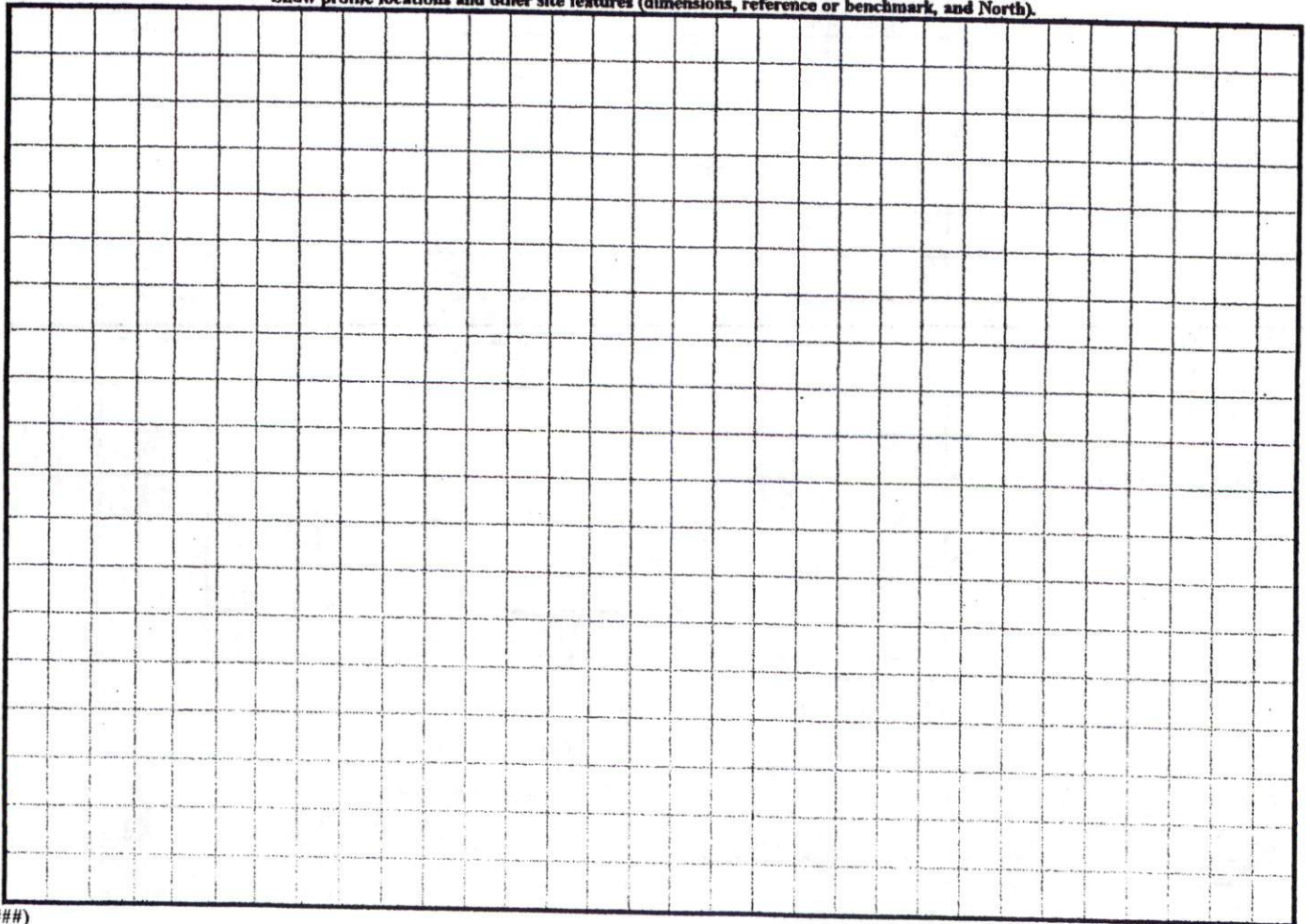
STRUCTURE

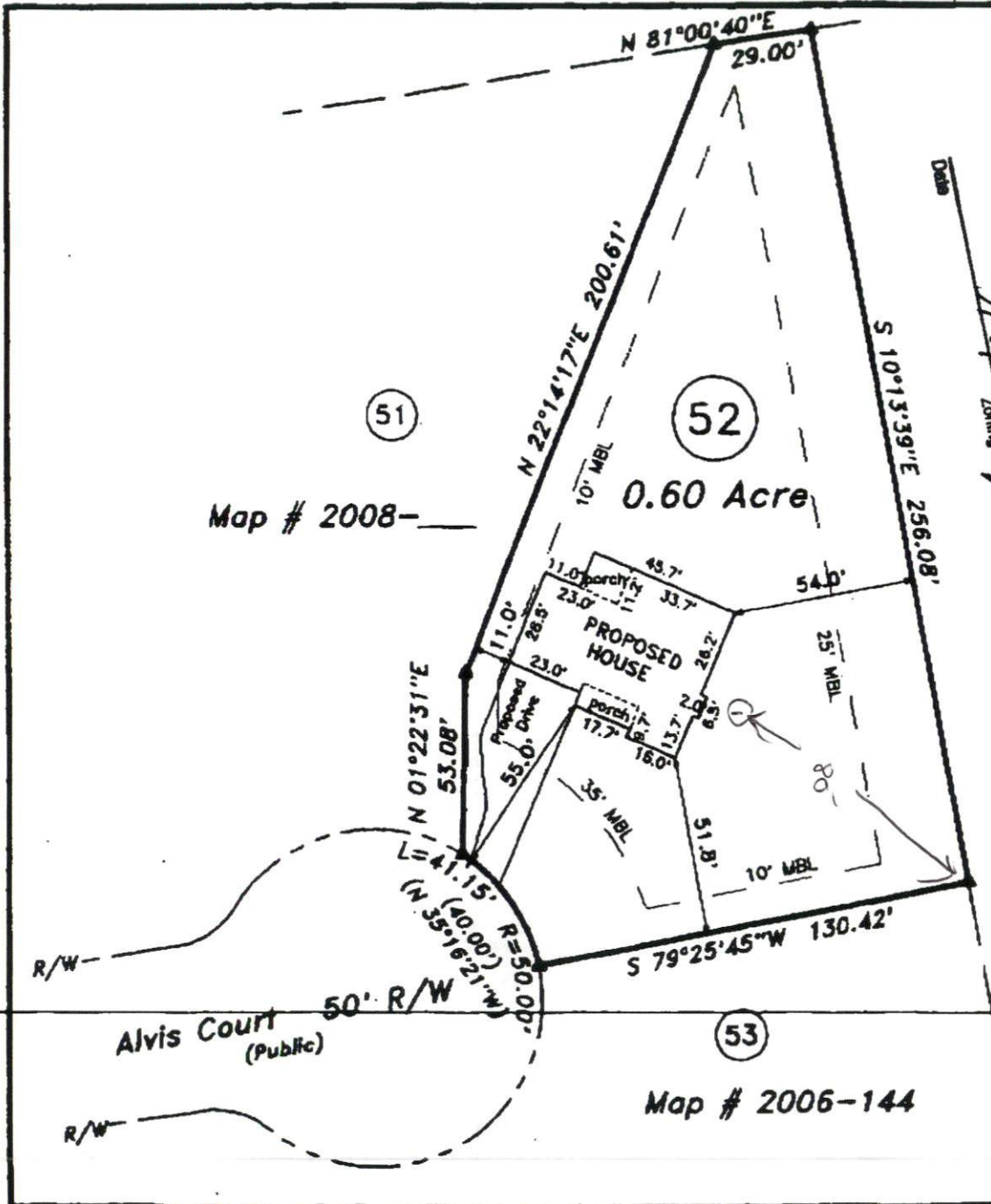
- SG-SINGLE GRAIN
- M-MASSIVE
- CR-CRUMB
- GR-GRANULAR
- SBK-SUBANGULAR BLOCKY
- ABK-ANGULAR BLOCKY
- PL-PLATY
- PR-PRISMATIC

MINERALOGY

- SLIGHTLY EXPANSIVE
- EXPANSIVE

Show profile locations and other site features (dimensions, reference or benchmark, and North).





Map # 2008-

0.60 Acre

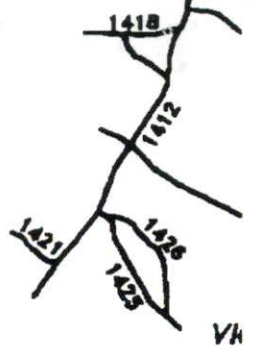
Alvis Court (Public)

Map # 2006-144

REV. APPROVAL
 SITE PLAN APPROVAL
 DISTRICT RA30 USE SFD
 BEDROOMS 5/7/08
 Zoning Administrator



Map # 2006-144



District
 Recommendation
 Survey

Rayno

Hector's Creek
 Scale: 1" = 5'

Survey
 ST
 LAND SURVEY
 870 NC 55
 910-897-1

~PRELIM
 - Not
 This plan represents a lot of record, review and approval and inspections

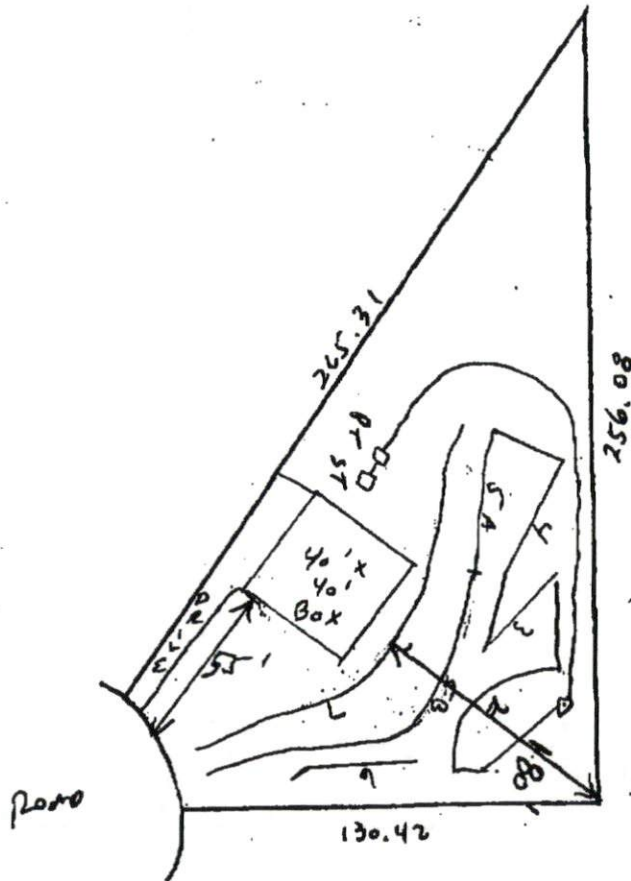


NOT F

Southeastern Soil & Environmental Associates, Inc.

P.O. Box 9321
Fayetteville, NC 28311
Phone/Fax (910) 822-4540
Email meaker3851@aol.com

Dexterfield
Lot 52
Proposed Septic



1" = 60'

SOUTHEASTEN SOIL & ENVIRONMENTAL ASSOC, INC.

PROPOSED SUBSURFACE WASTE DISPOSAL SYSTEM DETAIL SHEET

SUBDIVISION Dexterfield

LOT 52

INITIAL SYSTEM pump to approved 25% red.

REPAIR pump to approved 25% red.

DISTRIBUTION ceid

DISTRIBUTION serial

BENCHMARK 100.0

LOCATION rear corner - 52/53

NO. BEDROOMS 3

proposed LTRR = 0.45 gpd/ft²

<u>LINE</u>	<u>FLAG COLOR</u>	<u>ELEVATION</u>	<u>ACTUAL LENGTH</u>
-------------	-------------------	------------------	----------------------

Initial {

1	Y	98.42	30'
2	O	97.67	50'
3	B	97.25	35'
4	O	97.08	42'
5A	Y	96.50	43'

200 LF

6	B	97.17	40'
5B	Y	96.50	117'
7	O	95.67	150'

307 LF AVAILABLE

LF NEEDED

BY MEAKER

DATE 08/06/2007