

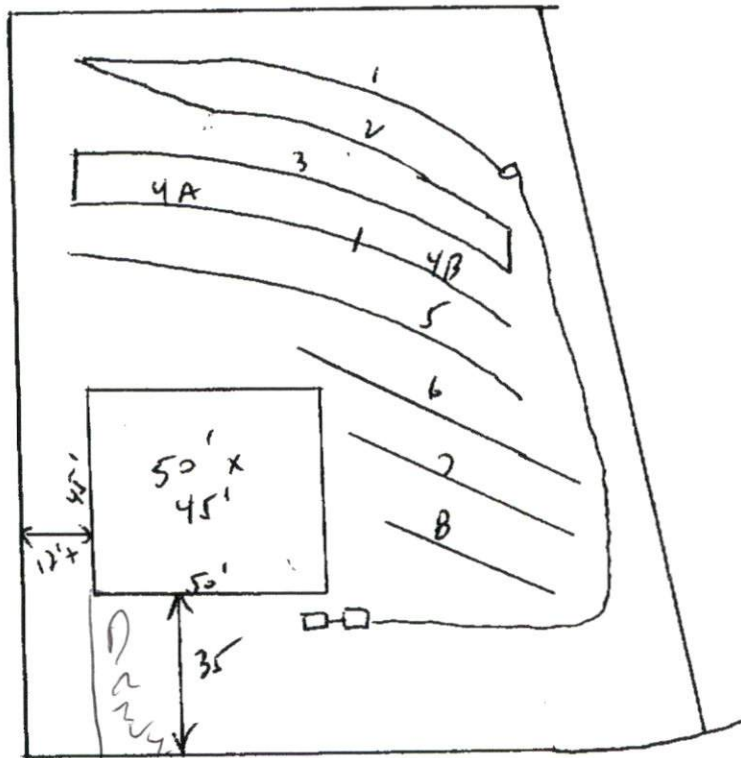
# Southeastern Soil & Environmental Associates, Inc.

P.O. Box 9321  
Fayetteville, NC 28311  
Phone/Fax (910) 822-4540  
Email meaker3851@aol.com

Persimmon Hill

Lot 50

JASON PRICE



TRAIL RIDER LANE

1" = 40'

SOUTHEASTEN SOIL & ENVIRONMENTAL ASSOC, INC.

PROPOSED SUBSURFACE WASTE DISPOSAL SYSTEM DETAIL SHEET

SUBDIVISION Persimmon Hill

LOT 50

INITIAL SYSTEM pump to approved 25% red.

REPAIR pump to approved 25% red.

DISTRIBUTION serial (d-box)

DISTRIBUTION serial at 12"

BENCHMARK 100.0

LOCATION TOP OF WAT. METER

NO. BEDROOMS 3

<u>LINE</u>	<u>FLAG COLOR</u>	<u>ELEVATION</u>	<u>ACTUAL LENGTH</u>
-------------	-------------------	------------------	----------------------

*Initial*

1	B	106.17	87'
2	YW	105.67	60'
3	BO	104.84	92'
4A	YW	104.00	61'
			302'
4B	YW	104.00	39'
5	B	103.42	110'
6	O	102.58	65'
7	Y	101.84	50'
8	B	101.00	40'
			304'

BY M EAKER

DATE 04/2007