



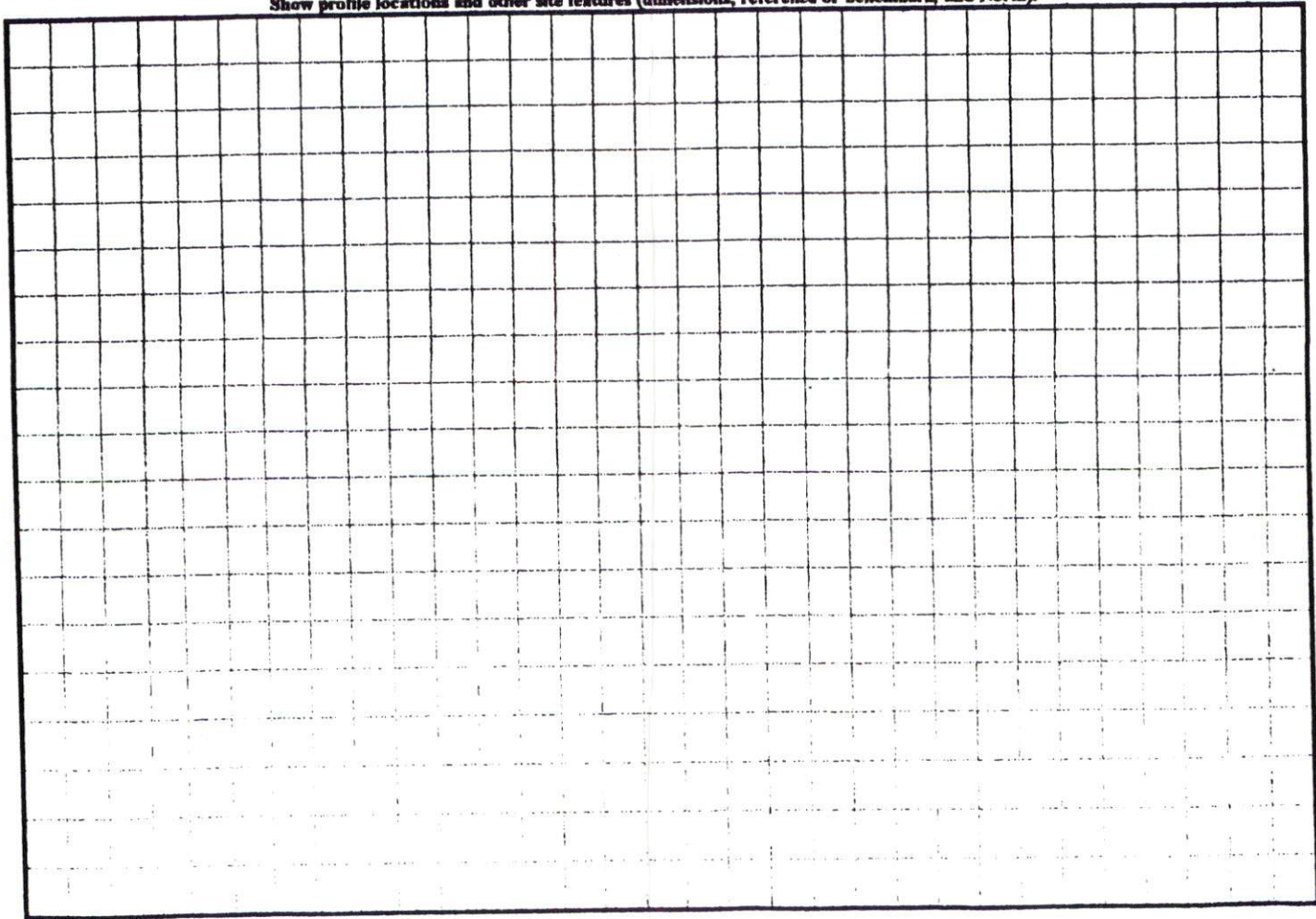
STATION  
 COMMENTS  
 22045  
 1-1  
 1-2  
 1-3  
 1-4  
 1-5  
 1-6  
 1-7  
 1-8  
 1-9  
 1-10

SCAPE POSITIONS	GROUP	TEXTURES	.1955 LTAR	CONSISTENCE MOIST	WET
R-RIDGE	I	S-SAND LS-LOAMY SAND	1.2 - 0.8	VFR-VERY FRIABLE FR-FRIABLE	NS-NON-STICKY SS-SLIGHTLY STICKY
S-SHOULDER SLOPE	II	SL-SANDY LOAM L-LOAM	0.8 - 0.6	FI-FIRM VFI-VERY FIRM EFI-EXTREMELY FIRM	S-STICKY VS-VERY STICKY NP-NON-PLASTIC SP-SLIGHTLY STICKY
L-LINEAR SLOPE					
FS-FOOT SLOPE	III	SI-SILT- SIL-SILT LOAM CL-CLAY LOAM SCL-SANDY CLAY LOAM SICL-SILTY CLAY LOAM	0.6 - 0.3		P-PLASTIC VP-VERY PLASTIC
N-NOSE SLOPE					
H-HEAD SLOPE					
CC-CONCLAVE SLOPE					
CV-CONVEX SLOPE	IV	SIC-SILTY CLAY C-CLAY SC-SANDY CLAY	0.4 - 0.1		
T-TERRACE					
FP-FLOOD PLAN					

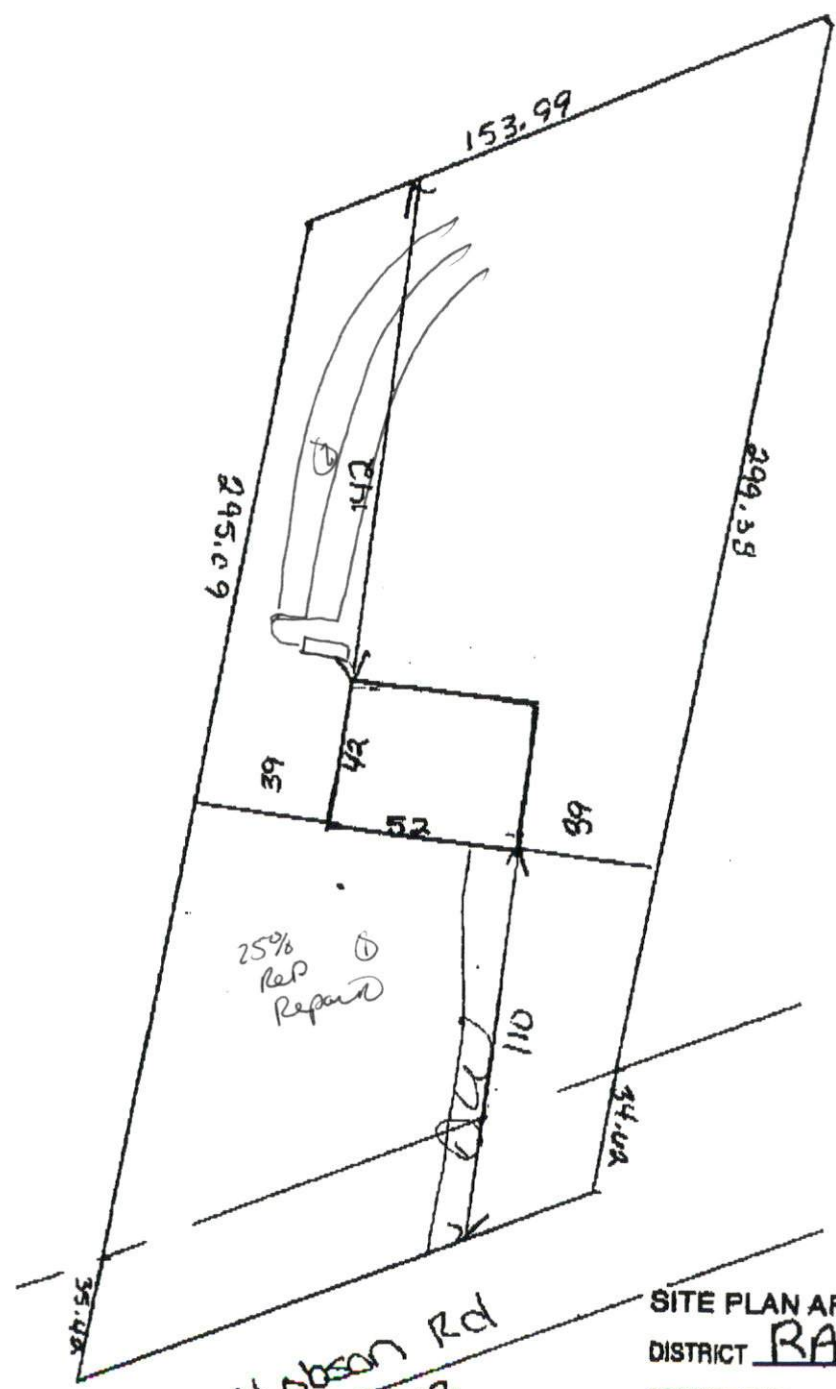
**STRUCTURE**  
 SG-SINGLE GRAIN  
 M-MASSIVE  
 CR-CRUMB  
 GR-GRANULAR  
 SBK-SUBANGULAR BLOCKY  
 ABK-ANGULAR BLOCKY  
 PL-PLATY  
 PR-PRISMATIC

**MINERALOGY**  
 SLIGHTLY EXPANSIVE  
 EXPANSIVE

Show profile locations and other site features (dimensions, reference or benchmark, and North).



1=50



Hobson Rd  
S.R. 1712

SITE PLAN APPROVAL  
 DISTRICT RA30 USE SFD  
 #BEDROOMS 3  
 Date 10/23/06 DAB  
 Zoning Administrator

X Brandon Beckwith