

COMMENTS: _____

<u>LANDSCAPE POSITIONS</u>	<u>GROUP</u>	<u>TEXTURES</u>	<u>.1955 LTAR</u>	<u>CONSISTENCE MOIST</u>	<u>WET</u>
R-RIDGE	I	S-SAND	1.2 - 0.8	VFR-VERY FRIABLE	NS-NON-STICKY
S-SHOULDER SLOPE		LS-LOAMY SAND			
L-LINEAR SLOPE	II	SL-SANDY LOAM	0.8 - 0.6	FR-FRIABLE	SS-SLIGHTLY STICKY
FS-FOOT SLOPE		L-LOAM			
N-NOSE SLOPE	III	SI-SILT-	0.6 - 0.3	FI-FIRM	S-STICKY
H-HEAD SLOPE		SIL-SILT LOAM			
CC-CONCLAVE SLOPE		CL-CLAY LOAM			
CV-CONVEX SLOPE		SCL-SANDY CLAY LOAM			
T-TERRACE	IV	SIC-SILTY CLAY	0.4 - 0.1	EFI-EXTREMELY FIRM	VS-VERY STICKY
FP-FLOOD PLAN		C-CLAY			
		SC-SANDY CLAY			

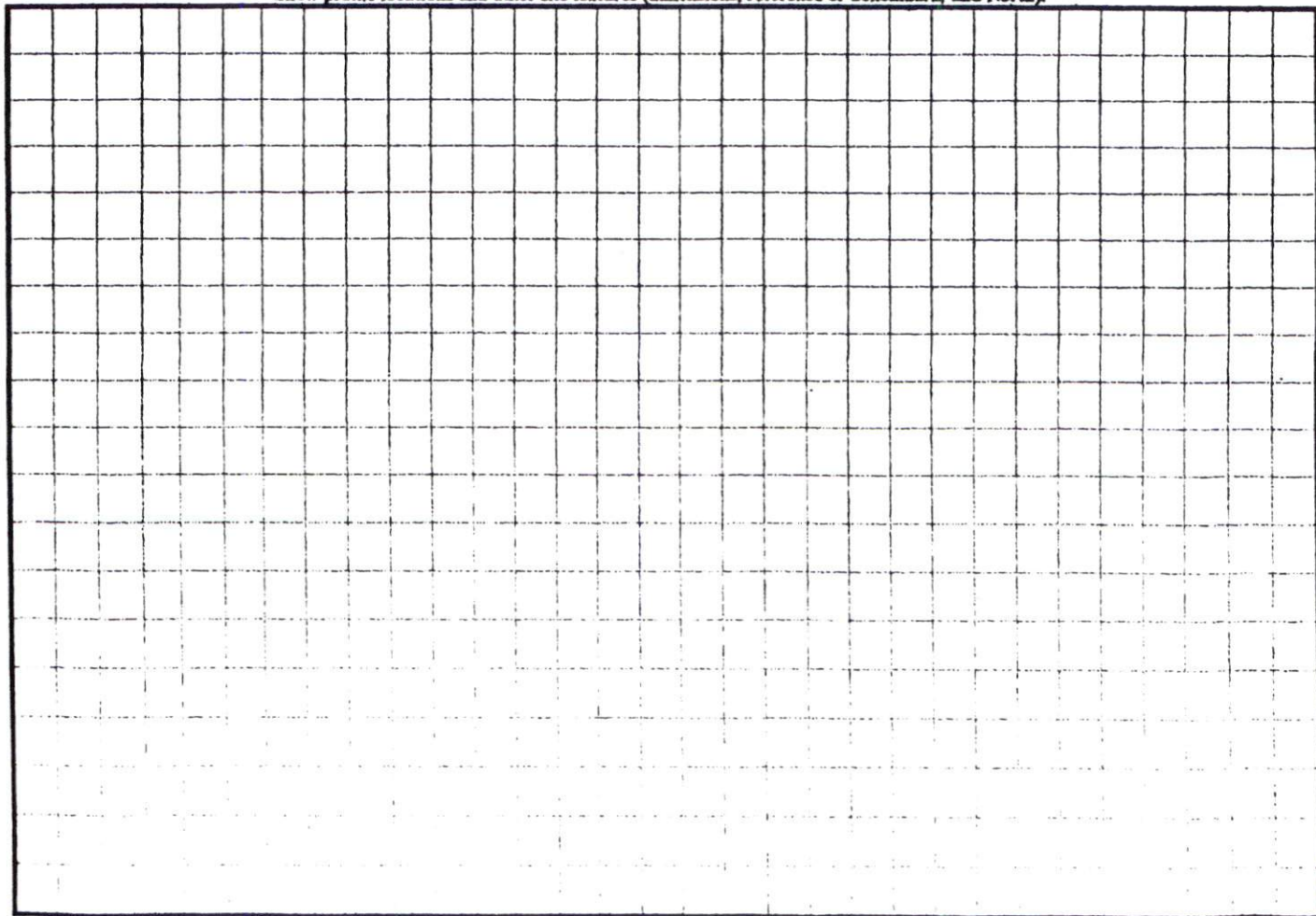
STRUCTURE

- SG-SINGLE GRAIN
- M-MASSIVE
- CR-CRUMB
- GR-GRANULAR
- SBK-SUBANGULAR BLOCKY
- ABK-ANGULAR BLOCKY
- PL-PLATY
- PR-PRISMATIC

MINERALOGY

- SLIGHTLY EXPANSIVE
- EXPANSIVE

Show profile locations and other site features (dimensions, reference or benchmark, and North).



LEGEND

- R/W-RIGHT OF WAY
- PB-PLAT BOOK
- DB-DEED BOOK
- PG-PAGE
- PROP-PROPOSED
- SF-SQUARE FEET
- AC-ACRE(S)
- CONC-CONCRETE
- PC-PLAT CABINET
- MB-MAP BOOK



Vicinity Map
(Not to Scale)



MAP# 2006-713
SHEET 1 OF 2

*MAK
Note on
change of
stub out
location*

SITE PLAN APPROVAL
DISTRICT RAZOR USE SFD
#BEDROOMS 3
[Signature] 10/17/06
ZONING ADMINISTRATOR

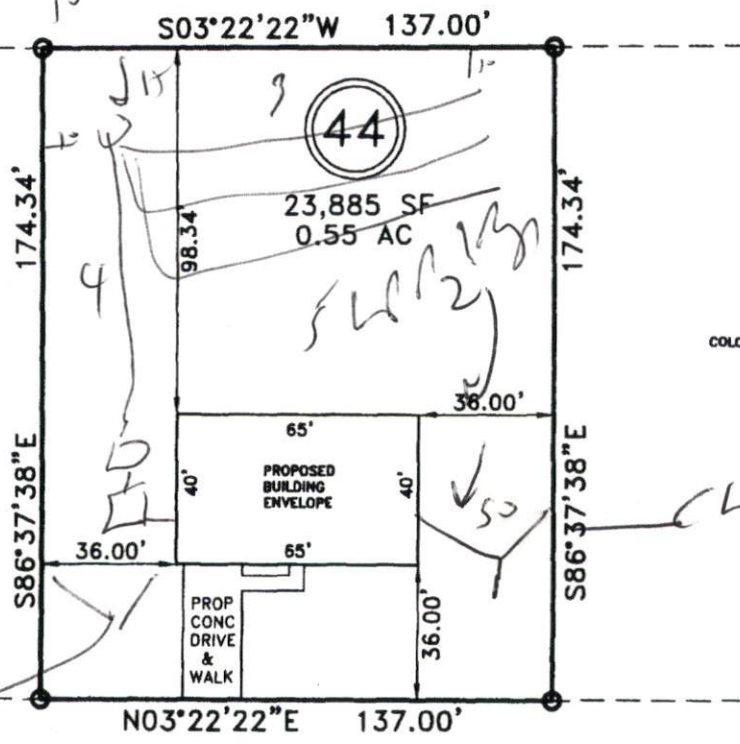
(46)

MAP# 2006-713
SHEET 2 OF 2
COLONIAL HILLS SUBDIVISION

(45)
MAP# 2006-713
SHEET 2 OF 2
COLONIAL HILLS SUBDIVISION

*My zone
is 1424*

(43)
MAP# 2006-713
SHEET 2 OF 2
COLONIAL HILLS SUBDIVISION



*Chg to
50'
22'*

50' PUBLIC R/W

COLONIAL HILLS DRIVE

**PRELIMINARY
PLOT PLAN**

(FOR PERC TEST ONLY)

PROPERTY OF: RBC HOMES, INC.
ADDRESS: COLONIAL HILLS DRIVE



TOWNSHIP: BARBECUE
DATE: AUGUST 17, 2006