



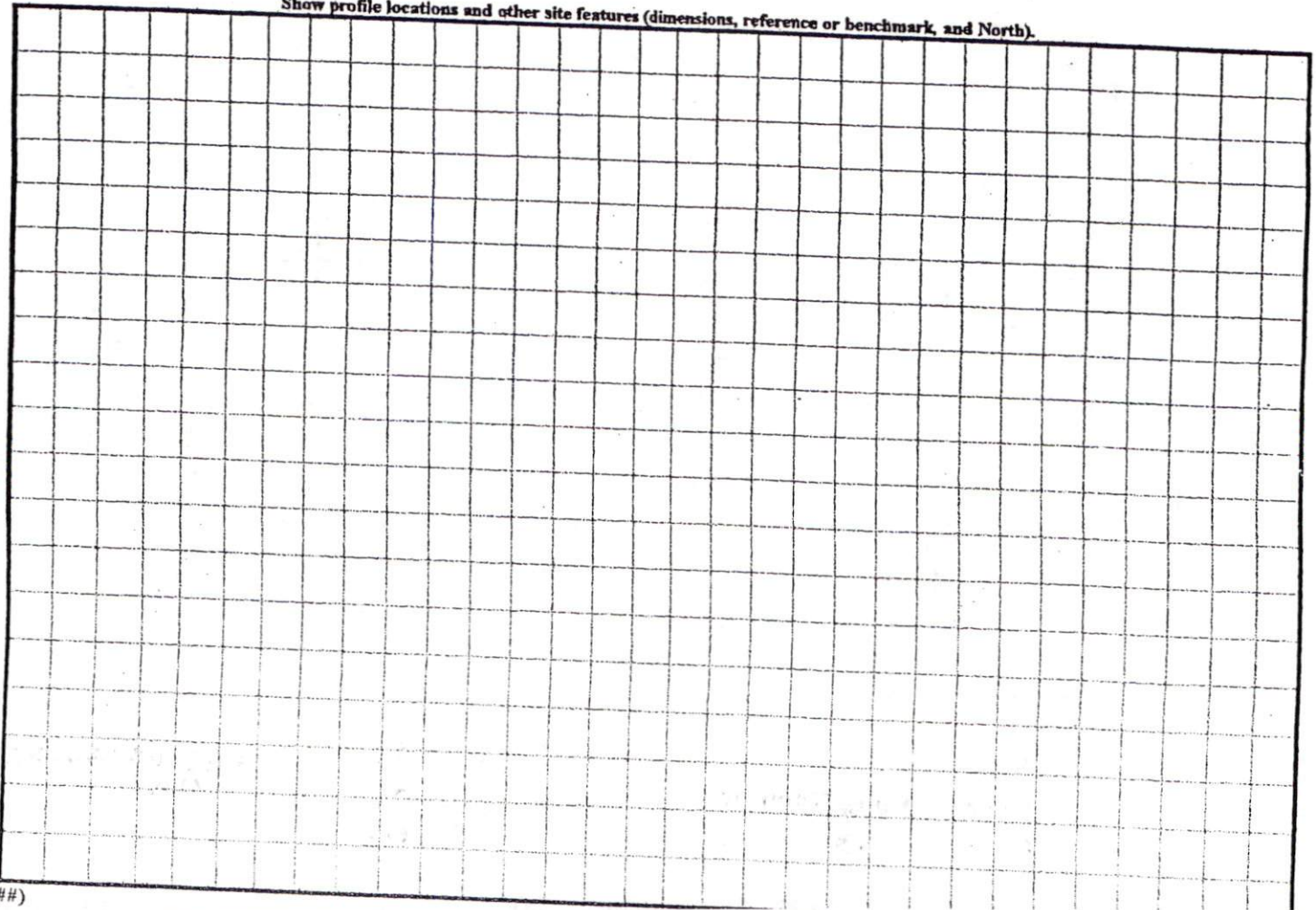
COMMENTS: \_\_\_\_\_  
 \_\_\_\_\_  
 \_\_\_\_\_

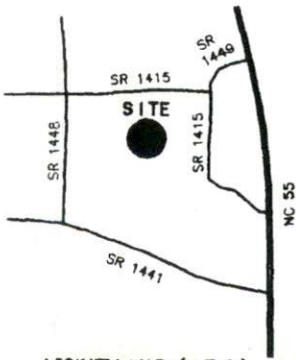
<u>LANDSCAPE POSITIONS</u>	<u>GROUP</u>	<u>TEXTURES</u>	<u>.1955 LTAR</u>	<u>CONSISTENCE MOIST</u>	<u>WET</u>
R-RIDGE	I	S-SAND	1.2 - 0.8	VFR-VERY FRIABLE FR-FRIABLE FI-FIRM VFI-VERY FIRM EFI-EXTREMELY FIRM	NS-NON-STICKY SS-SLIGHTLY STICKY S-STICKY VS-VERY STICKY NP-NON-PLASTIC SP-SLIGHTLY STICKY P-PLASTIC VP-VERY PLASTIC
S-SHOULDER SLOPE		LS-LOAMY SAND			
L-LINEAR SLOPE	II	SL-SANDY LOAM	0.8 - 0.6		
FS-FOOT SLOPE		L-LOAM			
N-NOSE SLOPE	III	SI-SILT-	0.6 - 0.3		
H-HEAD SLOPE		SIL-SILT LOAM			
CC-CONCLAVE SLOPE		CL-CLAY LOAM			
CV-CONVEX SLOPE		SCL-SANDY CLAY LOAM			
T-TERRACE	IV	SIC-SILTY CLAY	0.4 - 0.1		
FP-FLOOD PLAN		C-CLAY			
		SC-SANDY CLAY			

STRUCTURE  
 SG-SINGLE GRAIN  
 M-MASSIVE  
 CR-CRUMB  
 GR-GRANULAR  
 SBK-SUBANGULAR BLOCKY  
 ABK-ANGULAR BLOCKY  
 PL-PLATY  
 PR-PRISMATIC

MINERALOGY  
 SLIGHTLY EXPANSIVE  
 EXPANSIVE

Show profile locations and other site features (dimensions, reference or benchmark, and North).

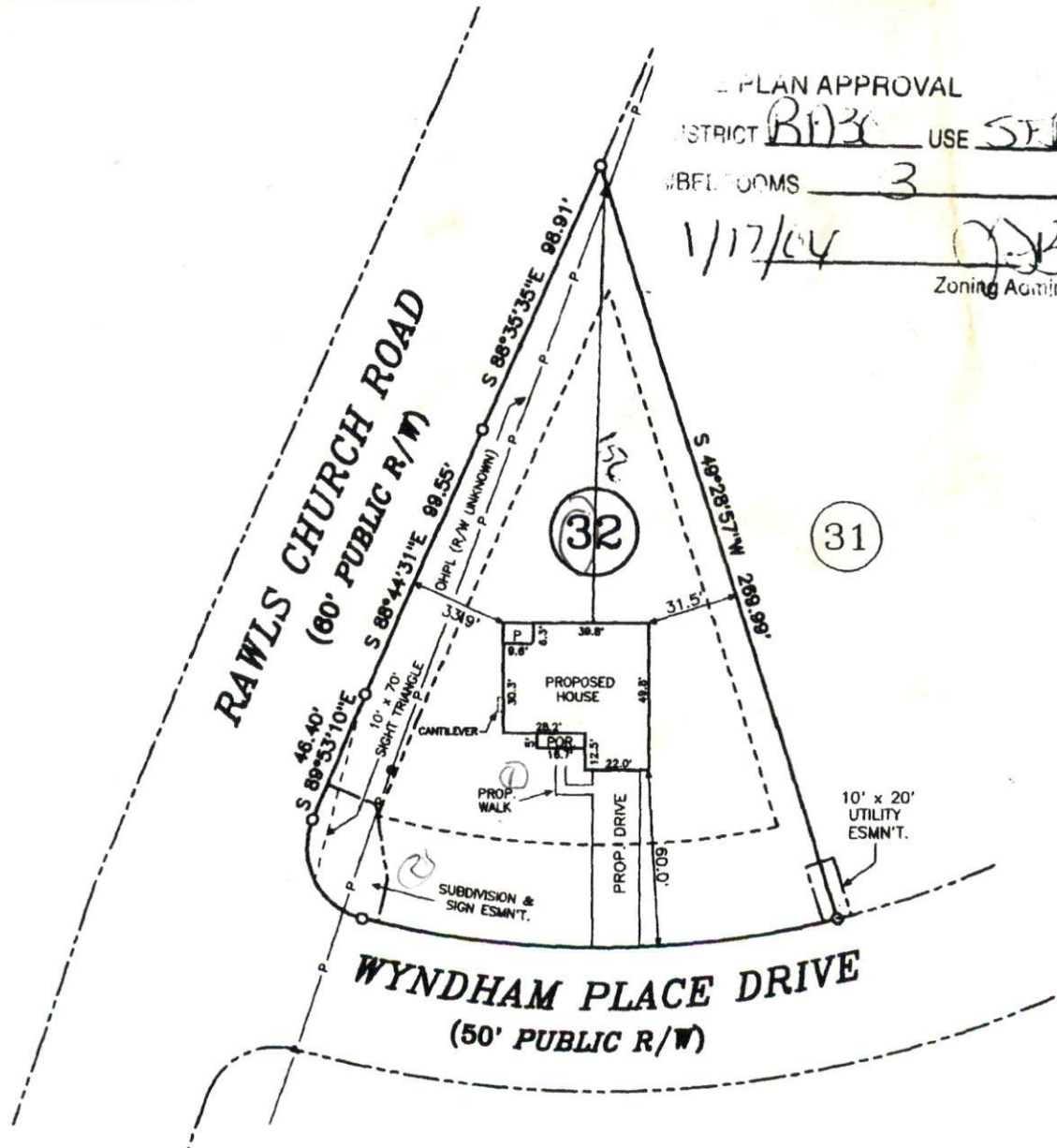




- LEGEND**
- NTS NOT TO SCALE
  - EIP EXISTING IRON PIPE
  - PP POWER POLE
  - W/M WATER METER
  - TB TELEPHONE BOX
  - IPS IRON PIPE SET
  - CP&L TRANSFORMER
  - CTV CABLE TV BOX
  - L. POLE LIGHT POLE
  - OHPL OVERHEAD POWER LINE
  - F.E.S. FLARED END SECTION (PIPE)
  - RCP REINFORCED CONC. PIPE
  - B.O.C. BACK OF CURB
  - F.H. FIRE HYDRANT
  - C/O SEWER CLEAN OUT
  - EIS EXISTING IRON STAKE
  - M.H. MANHOLE
  - ECM EXISTING CONCRETE MONUMENT

PLAT NORTH  
 (MAP #2003 PG.1049-1053)

PLAN APPROVAL  
 DISTRICT B130 USE SFD  
 NUMBER OF ROOMS 3  
 1/17/04  
 Zoning Administrator



NOTE: SHOWN IS LOT 32 OF  
 WYNDHAM PLACE S/D  
 REF: MAP #2003 PG.1049-1053

