

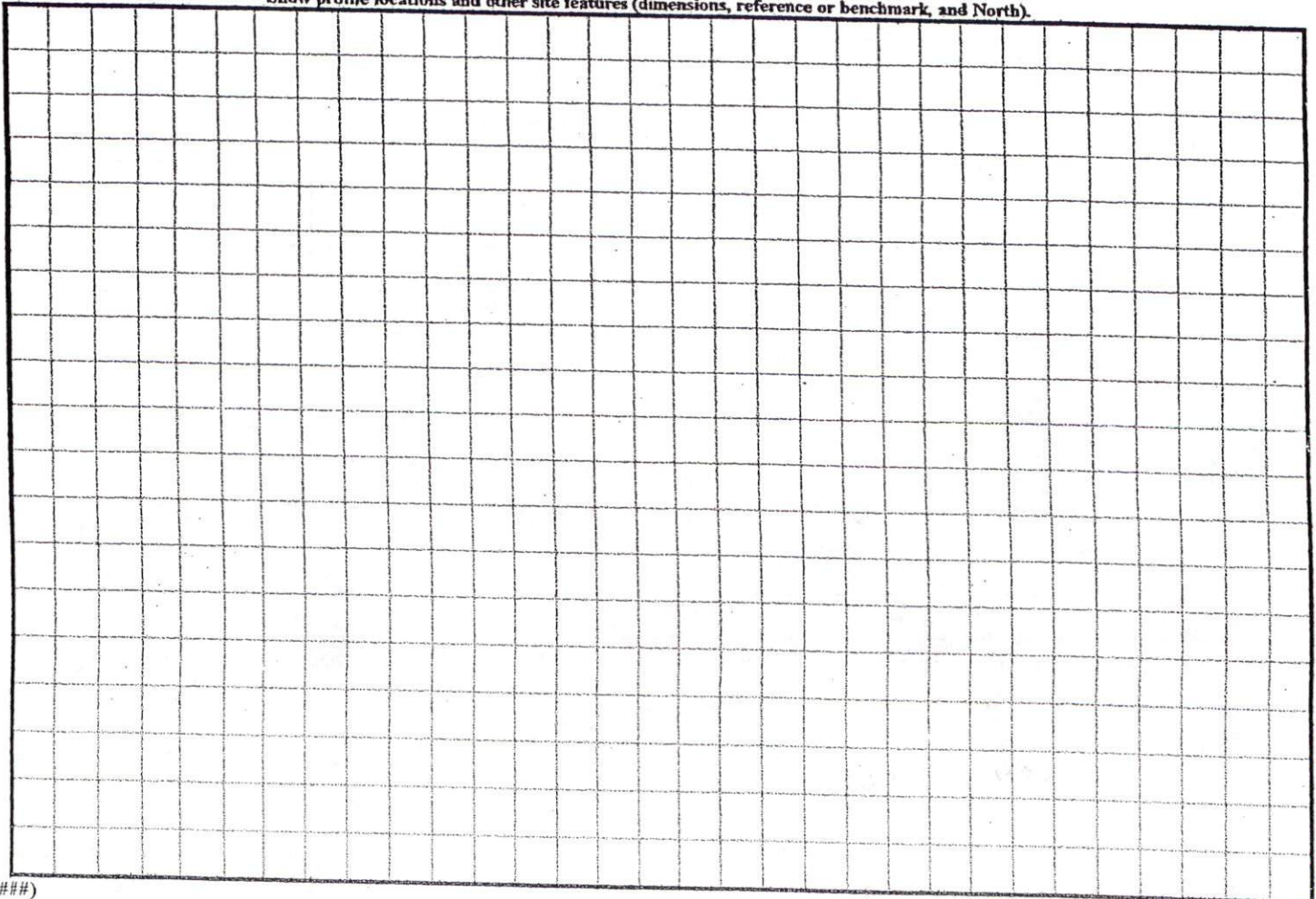
COMMENTS: _____

<u>LANDSCAPE POSITIONS</u>	<u>GROUP</u>	<u>TEXTURES</u>	<u>.1955 LTAR</u>	<u>CONSISTENCE MOIST</u>	<u>WET</u>
R-RIDGE	I	S-SAND	1.2 - 0.8	VFR-VERY FRIABLE	NS-NON-STICKY
S-SHOULDER SLOPE		LS-LOAMY SAND			
L-LINEAR SLOPE	II	SL-SANDY LOAM	0.8 - 0.6	FR-FRIABLE	SS-SLIGHTLY STICKY
FS-FOOT SLOPE		L-LOAM			
N-NOSE SLOPE	III	SI-SILT-	0.6 - 0.3	FI-FIRM	S-STICKY
H-HEAD SLOPE		SIL-SILT LOAM			
CC-CONCLAVE SLOPE		CL-CLAY LOAM			
CV-CONVEX SLOPE		SCL-SANDY CLAY LOAM			
T-TERRACE		SICL-SILTY CLAY LOAM			
FP-FLOOD PLAN	IV	SIC-SILTY CLAY	0.4 - 0.1	EFI-EXTREMELY FIRM	VS-VERY STICKY
		C-CLAY			
		SC-SANDY CLAY			

STRUCTURE
 SG-SINGLE GRAIN
 M-MASSIVE
 CR-CRUMB
 GR-GRANULAR
 SBK-SUBANGULAR BLOCKY
 ABK-ANGULAR BLOCKY
 PL-PLATY
 PR-PRISMATIC

MINERALOGY
 SLIGHTLY EXPANSIVE
 EXPANSIVE

Show profile locations and other site features (dimensions, reference or benchmark, and North).

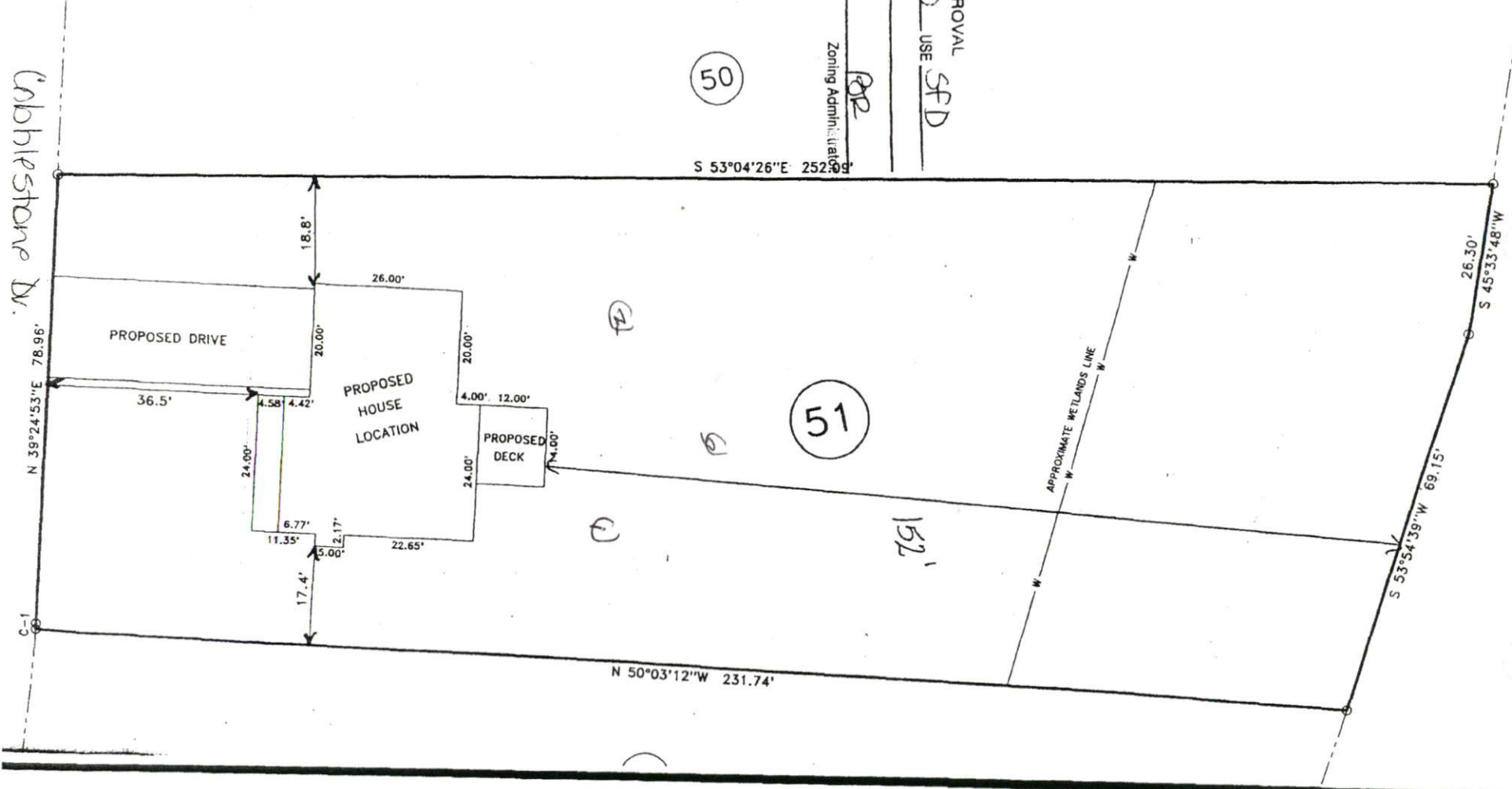


1 = 80

Chickstone Dr.

N 39°24'53"E 78.96'

C-1



50

51

152'

S 53°04'26"E 252.09'

26.30'
S 45°33'48"W

S 53°54'39"W 69.15'

N 50°03'12"W 231.74'

APPROXIMATE WETLANDS LINE

PLAN APPROVAL
 DISTRICT RAD USE SFD
 #BEDROOMS 3
12/2/05 PR
 Zoning Administrator