

**SOIL/SITE EVALUATION**  
**for ON-SITE WASTEWATER SYSTEM**

Owner: *05-500 12909*

Applicant:

Address:

Date Evaluated: ~~6/23~~

Proposed Facility: *Hum*

Design Flow (.1949): *360*

Property Size:

Location of Site: *CMAN*

Property Recorded: *unk*

Water Supply:  Public  Individual  Well  Spring  Other

Evaluation Method:  Auger Boring  Pit  Cut

Type of Wastewater:  Sewage  Industrial Process  Mixed

P R O F I L E #	.1940 Landscape Position/ Slope%	Horizon Depth (IN.)	SOIL MORPHOLOGY .1941		OTHER PROFILE FACTORS				Profile Class & LTAR
			.1941 Structure/ Texture	.1941 Consistence Mineralogy	.1942 Soil Wetness/ Color	.1943 Soil Depth (IN.)	.1956 Sapro Class	.1944 Restr Horiz	
		<i>21Y</i>	<i>GR JL</i>	<i>VFA SF</i>					
		<i>18-3L</i>	<i>SDH JCL</i>	<i>FA SF</i>					
		<i>36-4Y</i>	<i>SDH JL</i>	<i>F2 JL</i>	<i>CR 2 38</i>	<i>38</i>			<i>.3</i>
		<i>0-18</i>	<i>GR JL</i>	<i>VFA</i>					
		<i>18-3L</i>	<i>SDH JCL</i>	<i>FA SF</i>					
		<i>30-48</i>	<i>SDH JL</i>	<i>F2 SF</i>	<i>CR 2 @ 40</i>	<i>40</i>			<i>.7</i>
		<i>0-18</i>	<i>GR JL</i>	<i>VFA SF</i>					
		<i>18-3L</i>	<i>SDH JCL</i>	<i>FA SF</i>					
		<i>30-4Y</i>	<i>SDH JL</i>	<i>F2 JL</i>	<i>CR 2 @ 40</i>	<i>40</i>			<i>.7</i>
		<i>0-24</i>	<i>GR JL</i>	<i>VFA SF</i>					
		<i>24-3L</i>	<i>SDH JCL</i>	<i>FA SF</i>					
		<i>36-4Y</i>	<i>SDH JL</i>	<i>F2 JL</i>		<i>48</i>			<i>.3</i>
		<i>0-24</i>	<i>GR JL</i>	<i>VFA JL</i>					
		<i>24-3L</i>	<i>SDH JCL</i>	<i>FA SF</i>					
		<i>36-4Y</i>	<i>SDH JL</i>	<i>F2 JL</i>	<i>CR 2 @ 38</i>	<i>38</i>			<i>.7</i>

Description	Initial System	Repair System
Available Space (.1945)	<i>✓</i>	<i>✓</i>
System Type(s)	<i>CRAND</i>	<i>WPT</i>
Site LTAR	<i>.3</i>	<i>.1</i>

Other Factors (.1946): \_\_\_\_\_  
 Site Classification (.1948): *PJ*  
 Evaluated By: *JWA*  
 Others Present: *KR*

*Change to 25% Rd. 54772 (4mlr)*

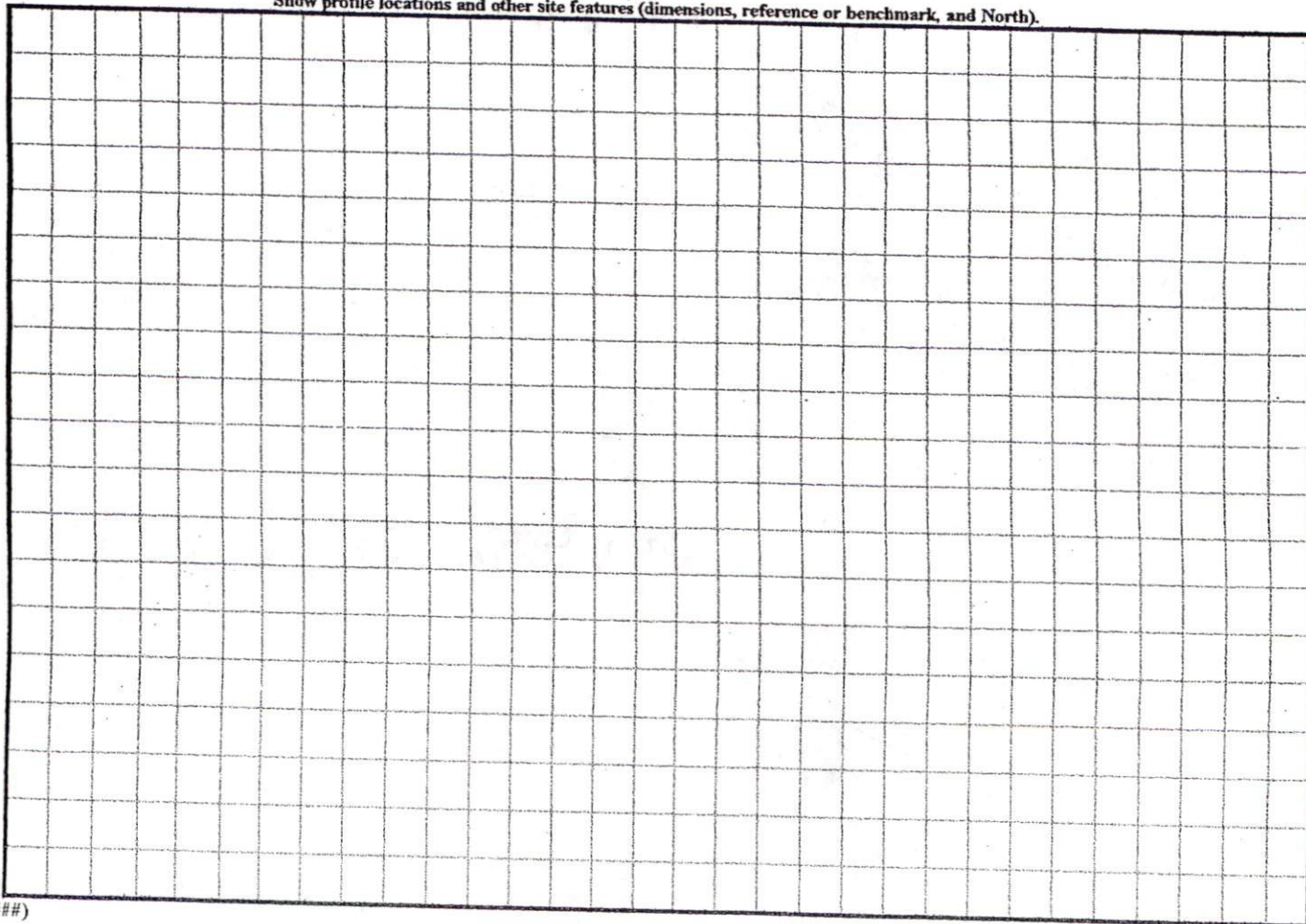
COMMENTS: \_\_\_\_\_  
 \_\_\_\_\_  
 \_\_\_\_\_

<u>LANDSCAPE POSITIONS</u>	<u>GROUP</u>	<u>TEXTURES</u>	<u>.1955 LTAR</u>	<u>CONSISTENCE MOIST</u>	<u>WET</u>
R-RIDGE	I	S-SAND	1.2 - 0.8	VFR-VERY FRIABLE	NS-NON-STICKY
S-SHOULDER SLOPE		LS-LOAMY SAND			
L-LINEAR SLOPE	II	SL-SANDY LOAM	0.8 - 0.6	FR-FRIABLE	SS-SLIGHTLY STICKY
FS-FOOT SLOPE		L-LOAM			
N-NOSE SLOPE	III	SI-SILT-	0.6 - 0.3	FI-FIRM	VS-VERY STICKY
H-HEAD SLOPE		SIL-SILT LOAM			
CC-CONCLAVE SLOPE		CL-CLAY LOAM			
CV-CONVEX SLOPE		SCL-SANDY CLAY LOAM			
T-TERRACE		SICL-SILTY CLAY LOAM			
FP-FLOOD PLAN	IV	SIC-SILTY CLAY	0.4 - 0.1	EFI-EXTREMELY FIRM	NP-NON-PLASTIC
		C-CLAY			
		SC-SANDY CLAY			SP-SLIGHTLY STICKY
					P-PLASTIC
					VP-VERY PLASTIC

STRUCTURE  
 SG-SINGLE GRAIN  
 M-MASSIVE  
 CR-CRUMB  
 GR-GRANULAR  
 SBK-SUBANGULAR BLOCKY  
 ABK-ANGULAR BLOCKY  
 PL-PLATY  
 PR-PRISMATIC

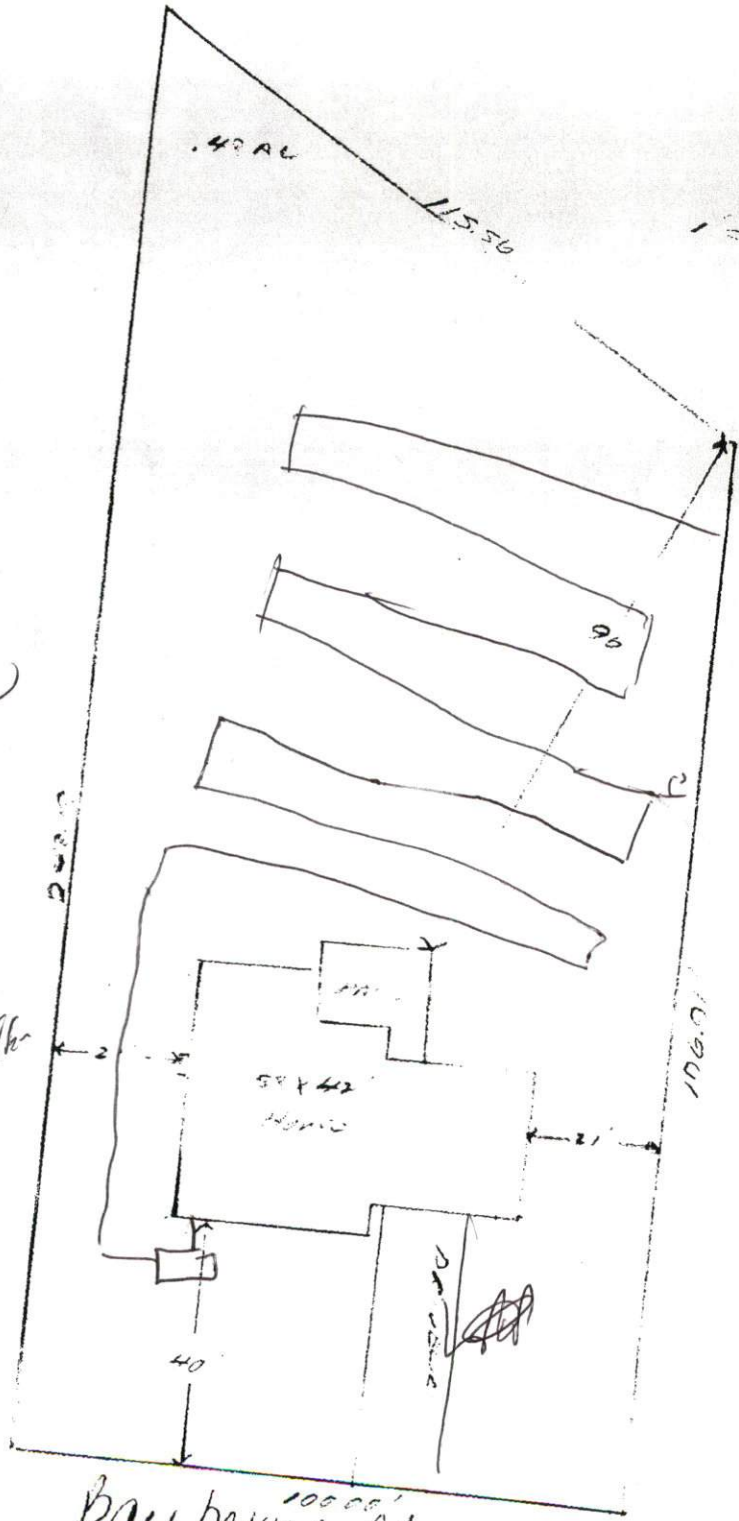
MINERALOGY  
 SLIGHTLY EXPANSIVE  
 EXPANSIVE

Show profile locations and other site features (dimensions, reference or benchmark, and North).





SITE PLAN APPROVAL  
 DISTRICT RAZOR USE SFD  
 #BEDROOMS 2  
8/29/05 PRR  
 Zoning Administrator



1 x 300  
 18"  
 25%  
 Kel. 54176

Bayberry Ct.  
 Lot # 230  
 Wa. 11/11/05