

Southeastern Sc.. & Environmenta. Associates, Inc.

P.O. Box 9321
Fayetteville, NC 28311
Phone/Fax (910) 822-4540

May 11, 2005 (revised)

Harnett County Health Department
PO Box 09
Lillington, N.C. 27546

Re: Final recommendations, Lots 1 - 110, Forest Oaks Subdivision (Phase 1 & 2),
Lemuel Black Road, Harnett County, North Carolina

To whom it may concern,

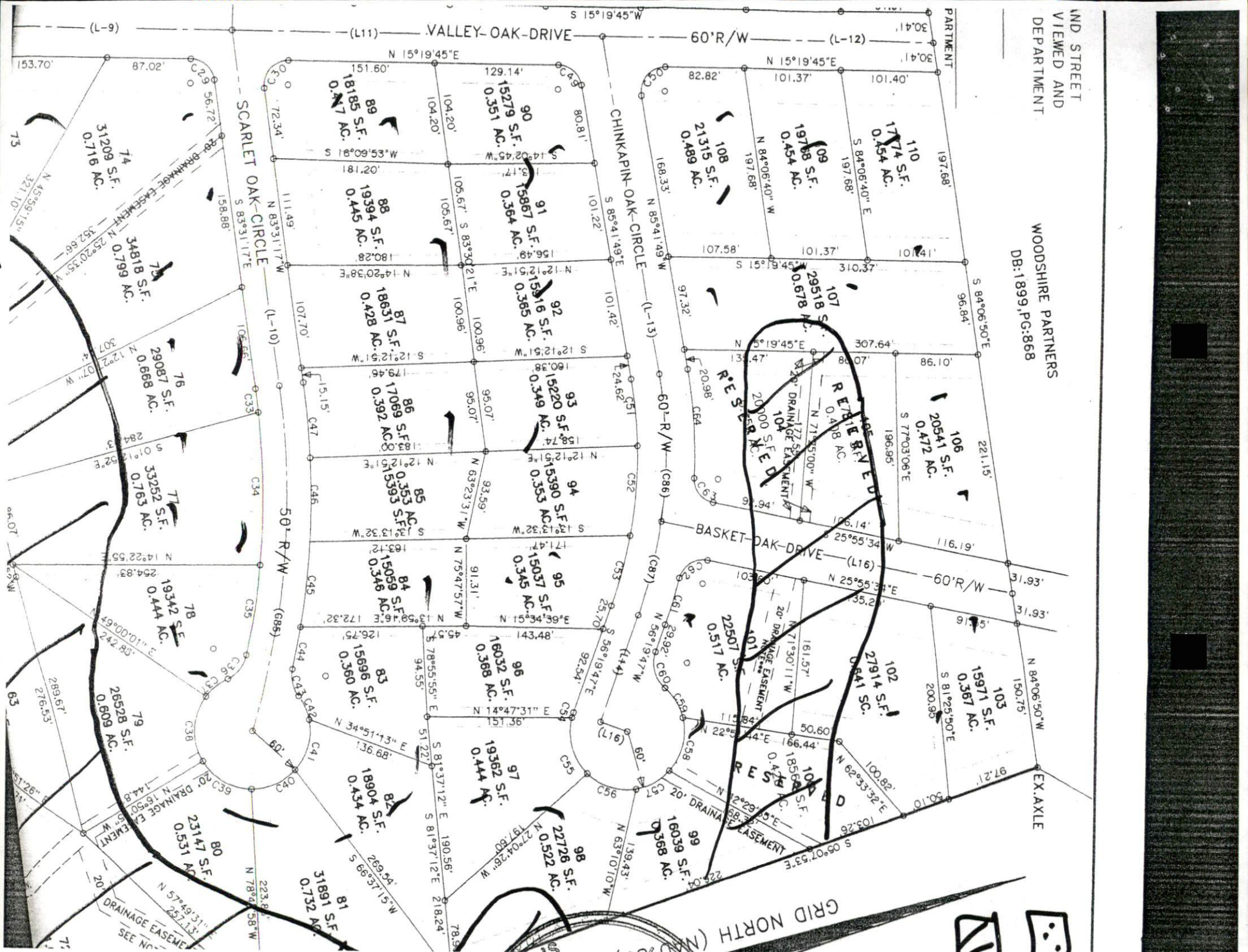
A preliminary soils investigation has been completed for each of the above referenced lots. The property is located off Lemuel Black Road as shown on the accompanying map. The purpose of the investigation was to determine the ability of the soil to support any subsurface waste disposal system for each proposed lot. All ratings and determinations were made in accordance with "Laws and Rules for Sanitary Sewage Collection, Treatment, and Disposal, 15A NCAC 18A .1900".

Each of lots 1, 4 - 25, 27 - 99, 101 - 103 & 106 - 110 appears to contain at least one area that meets minimum criteria for subsurface waste disposal systems for at least a 3 bedroom home (may include the use of conventional drainlines, gravelless drainlines, low pressure pipe, pumps, fill, large diameter pipe, french drains, pretreatment, etc.). Soil characteristics in the usable area were dominantly provisionally suitable to at least 24 inches (including .1940, .1941, .1942, .1943, .1944 and .1945). A soil map indicating typical soil areas that meet these criteria is enclosed. Each of the lots appears to contain sufficient available space for a repair area for at least a 3 bedroom home (may include the use of any of the systems mentioned above).

Because of the small nature of these lots, house placement may vary "from the desired setback" on any lot. Particular house placement and size may be required on any lot. Any or all lots may require specific design/layout on our part prior to action by the local health department due to space and soil considerations (at separate cost to client).

IND STREET
VIEWED AND
DEPARTMENT

WOODSHIRE PARTNERS
DB:1899, PG:868



GRID NORTH

VALLEY-OAK-DRIVE

CHINKAPIN-OAK-CIRCLE

BASKET-OAK-DRIVE

SCARLET OAK-CIRCLE

RESERVED
REBUILT

EX AXLE

74
31209 S.F.
0.716 AC.

75
34818 S.F.
0.799 AC.

76
29087 S.F.
0.668 AC.

77
33252 S.F.
0.763 AC.

78
19342 S.F.
0.444 AC.

79
25928 S.F.
0.596 AC.

80
13327 S.F.
0.305 AC.

89
18185 S.F.
0.417 AC.

88
19394 S.F.
0.445 AC.

87
18631 S.F.
0.428 AC.

86
17069 S.F.
0.392 AC.

84
15059 S.F.
0.346 AC.

83
15696 S.F.
0.360 AC.

82
18904 S.F.
0.434 AC.

81
31891 S.F.
0.732 AC.

90
15279 S.F.
0.351 AC.

91
15867 S.F.
0.364 AC.

92
15916 S.F.
0.365 AC.

93
15220 S.F.
0.349 AC.

94
15390 S.F.
0.353 AC.

95
15037 S.F.
0.345 AC.

96
16032 S.F.
0.368 AC.

97
19362 S.F.
0.444 AC.

98
22726 S.F.
0.522 AC.

108
21315 S.F.
0.489 AC.

109
19788 S.F.
0.454 AC.

107
29518 S.F.
0.678 AC.

104
20000 S.F.
0.458 AC.

101
22507 S.F.
0.517 AC.

102
27914 S.F.
0.641 AC.

69
16039 S.F.
0.368 AC.

110
17174 S.F.
0.394 AC.

106
20541 S.F.
0.472 AC.

103
15971 S.F.
0.367 AC.