

SOUTHEASTERN SOIL & ENVIRONMENTAL ASSOC., INC.

PROPOSED SUBSURFACE WASTE DISPOSAL SYSTEM DETAIL SHEET

SUBDIVISION Crosslink LOT 29

INITIAL SYSTEM pump to 25% reduction REPAIR SYSTEM Drip (no pretreat)

BENCHMARK ELEV. 100.0 LOCATION Left rear corner 29/30

TYPE OF DISTRIBUTION pump to D-box

proposed LTAR = 0.3 gpd/ft²

LINE	ELEVATION	LENGTH	FLAG COLOR
1	100.42	70'	B
2	100.08	70'	W
3	99.84	20'	Y
4	98.67	90'	B

repair Drip (no pretreat)

AREA REQUIREMENT @ 0.1 gpd/ft² =

$360 / 0.1 \Rightarrow 3600 \text{ ft}^2$

BY M EAKER DATE 03/2006

FLAG COLOR: Y = YELLOW R = RED W = WHITE B = BLUE O = ORANGE P = PINK

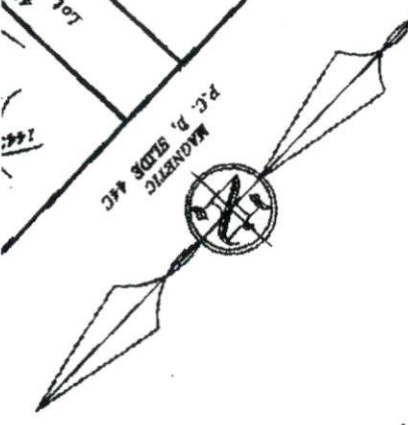
NOT FOR RECORDATION

STANTCILL & ASSOCIATES
 Surveyed & Mapped By
 Professional Land Surveyor, P.A.
 P.O. Box 730
 Raleigh, N.C. 27601
 919-839-2133
 819-839-2802 (FAX)

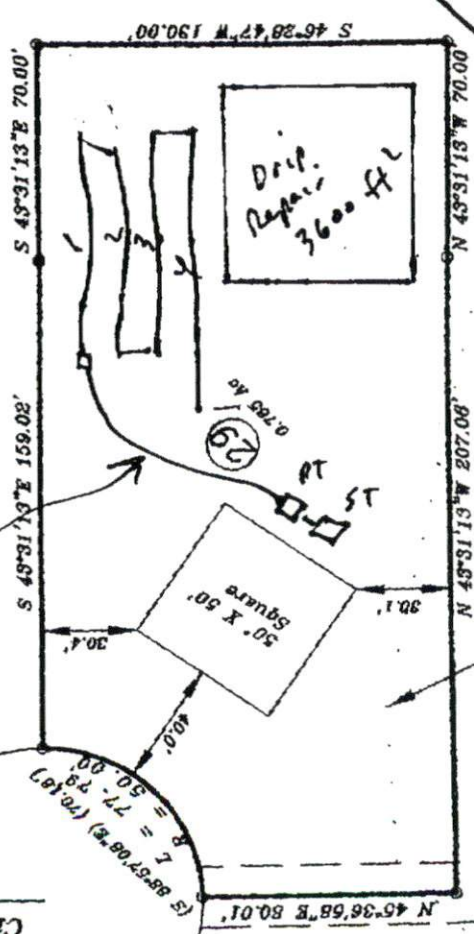
STANTCILL & ASSOCIATES
 Surveyed & Mapped By
 Professional Land Surveyor, P.A.
 P.O. Box 730
 Raleigh, N.C. 27601
 919-839-2133
 819-839-2802 (FAX)

Zone: RA-20M
 Black River Twp.
 Date: May 5, 2005
 Plo: 0669-68-1-144
 Herat: 0669-68-1-144

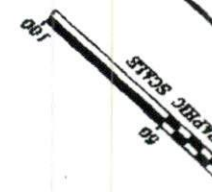
D.T.F. CONSULTANTS
 Lot 28 Crk. N.W.
 Prop. 144



4 WAYS
 20' CHS
 2



Crosslink Drive
 50' R/W



072822

8, 2005
 CITY