

COMMENTS: _____

<u>LANDSCAPE POSITIONS</u>	<u>GROUP</u>	<u>TEXTURES</u>	<u>.1955 LTAR</u>	<u>CONSISTENCE MOIST</u>	<u>WET</u>
R-RIDGE	I	S-SAND	1.2 - 0.8	VFR-VERY FRIABLE	NS-NON-STICKY
S-SHOULDER SLOPE		LS-LOAMY SAND			
L-LINEAR SLOPE	II	SL-SANDY LOAM	0.8 - 0.6	FR-FRIABLE	SS-SLIGHTLY STICKY
FS-FOOT SLOPE		L-LOAM			
N-NOSE SLOPE	III	SI-SILT-	0.6 - 0.3	FI-FIRM	S-STICKY
H-HEAD SLOPE		SIL-SILT LOAM			
CC-CONCLAVE SLOPE		CL-CLAY LOAM			
CV-CONVEX SLOPE		SCL-SANDY CLAY LOAM			
T-TERRACE	IV	SIC-SILTY CLAY	0.4 - 0.1	EFI-EXTREMELY FIRM	NP-NON-PLASTIC
FP-FLOOD PLAN		C-CLAY			
		SC-SANDY CLAY			
		SICL-SILTY CLAY LOAM			SP-SLIGHTLY STICKY
					P-PLASTIC
					VP-VERY PLASTIC

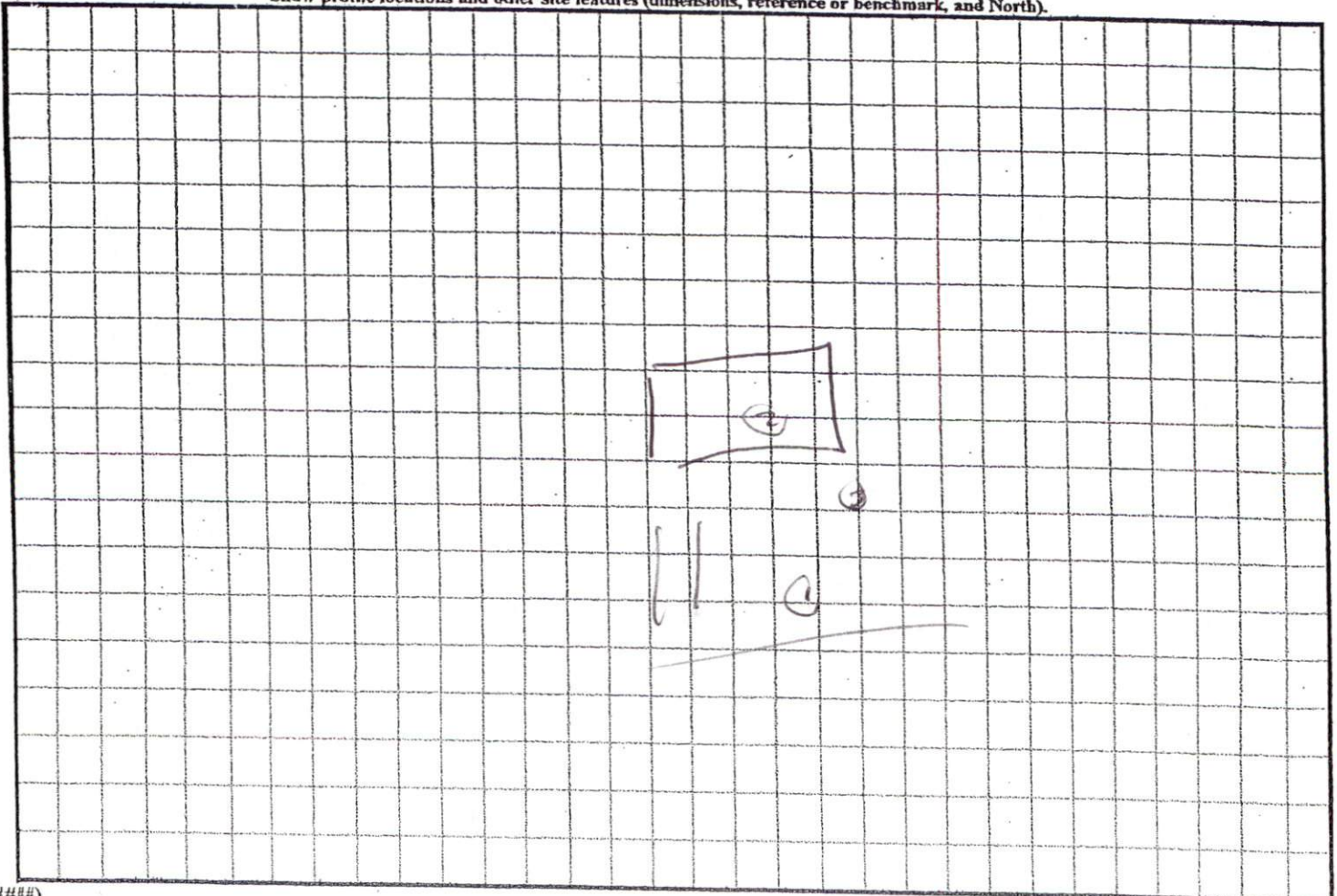
STRUCTURE

- SG-SINGLE GRAIN
- M-MASSIVE
- CR-CRUMB
- GR-GRANULAR
- SBK-SUBANGULAR BLOCKY
- ABK-ANGULAR BLOCKY
- PL-PLATY
- PR-PRISMATIC

MINERALOGY

- SLIGHTLY EXPANSIVE
- EXPANSIVE

Show profile locations and other site features (dimensions, reference or benchmark, and North).



1=100



SITE PLAN APPROVAL
DISTRICT BA USE SFD
#BEDROOMS 3
2-9-05
ZONING ADMINISTRATOR

OHPL (R\W UNKNOWN)

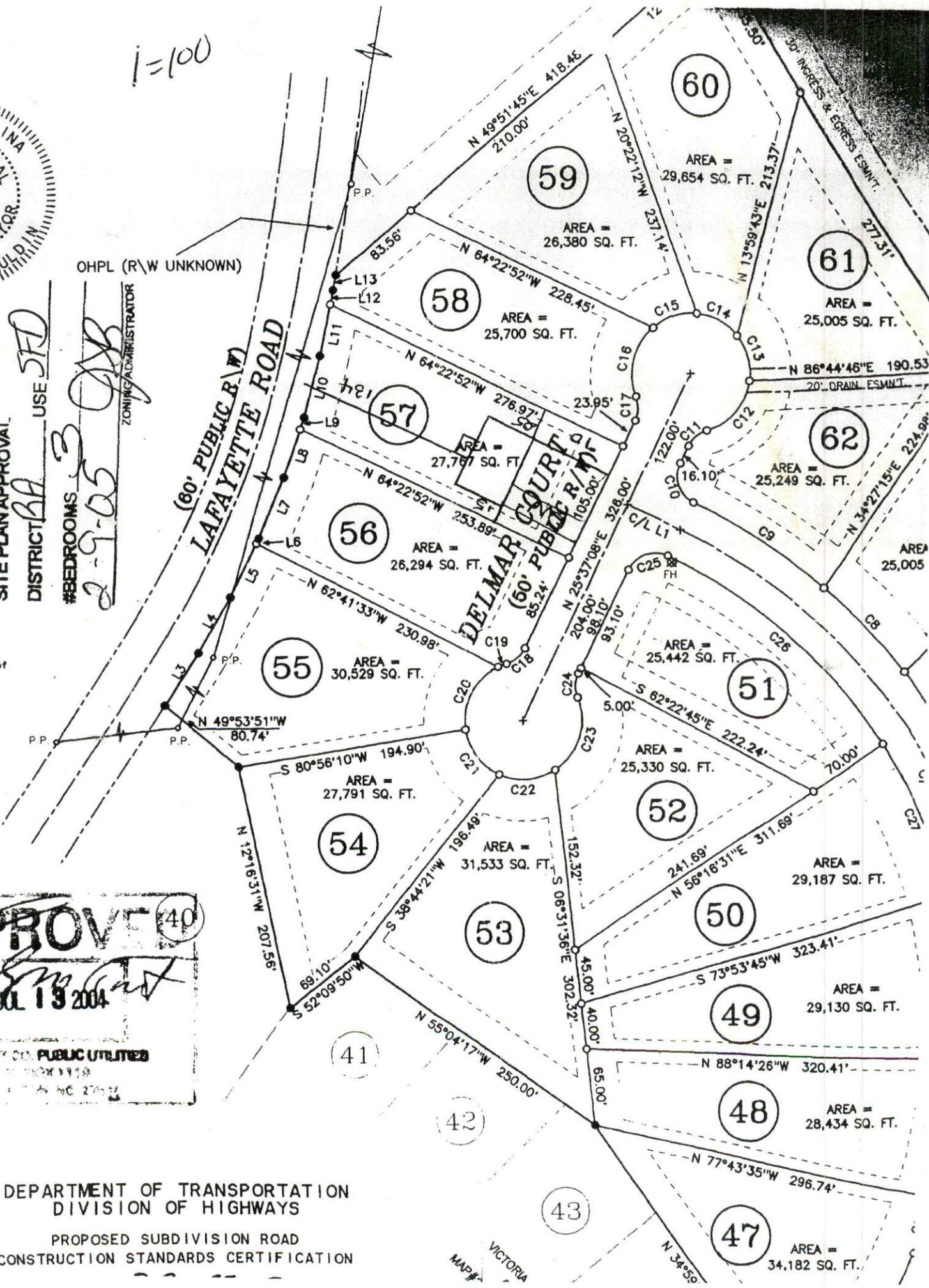
(60' PUBLIC R/W)
LAFAYETTE ROAD

DELMAR COURT
(60' PUBLIC R/W)

In the parcels of
entry or
recs of
definition
able to

APPROVED 40
[Signature]
JUL 13 2004
MAYHEW CO. PUBLIC UTILITIES

DEPARTMENT OF TRANSPORTATION
DIVISION OF HIGHWAYS
PROPOSED SUBDIVISION ROAD
CONSTRUCTION STANDARDS CERTIFICATION



VICTORIA
MAP



5x60
18-20

256
16