

COMMENTS:

<u>LANDSCAPE POSITIONS</u>	<u>GROUP</u>	<u>TEXTURES</u>	<u>.1955 LTAR</u>	<u>CONSISTENCE MOIST</u>	<u>WET</u>
R-RIDGE	I	S-SAND	1.2 - 0.8	VFR-VERY FRIABLE	NS-NON-STICKY
S-SHOULDER SLOPE		LS-LOAMY SAND			
L-LINEAR SLOPE	II	SL-SANDY LOAM	0.8 - 0.6	FR-FRIABLE	SS-SLIGHTLY STICKY
FS-FOOT SLOPE		L-LOAM		FI-FIRM	S-STICKY
N-NOSE SLOPE				VFI-VERY FIRM	VS-VERY STICKY
H-HEAD SLOPE				EFI-EXTREMELY FIRM	NP-NON-PLASTIC
CC-CONCLAVE SLOPE	III	SI-SILT-	0.6 - 0.3		SP-SLIGHTLY STICKY
CV-CONVEX SLOPE		SIL-SILT LOAM			P-PLASTIC
T-TERRACE		CL-CLAY LOAM			VP-VERY PLASTIC
FP-FLOOD PLAN		SCL-SANDY CLAY LOAM			
	IV	SIC-SILTY CLAY	0.4 - 0.1		
		C-CLAY			
		SC-SANDY CLAY			

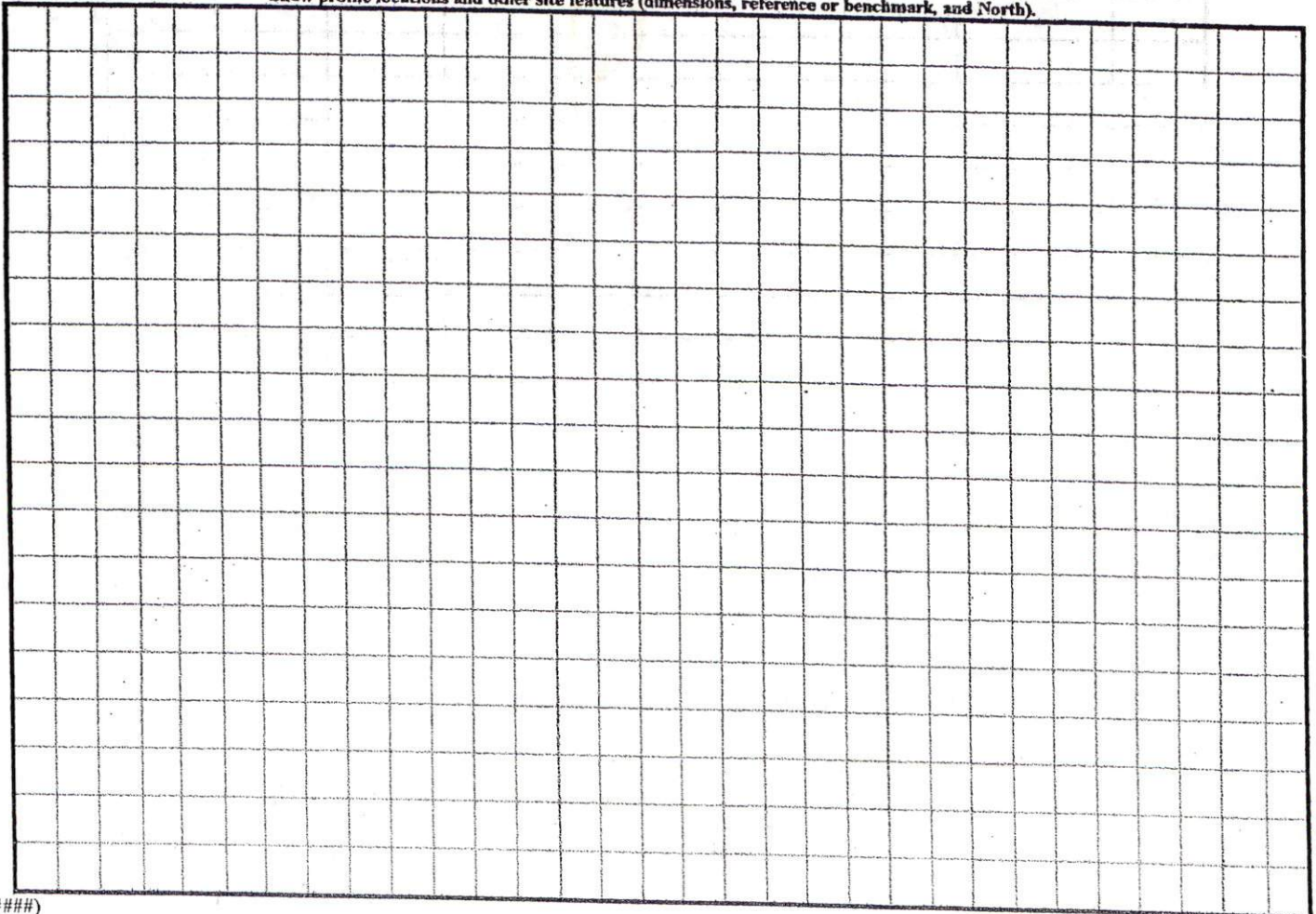
STRUCTURE

SG-SINGLE GRAIN
M-MASSIVE
CR-CRUMB
GR-GRANULAR
SBK-SUBANGULAR BLOCKY
ABK-ANGULAR BLOCKY
PL-PLATY
PR-PRISMATIC

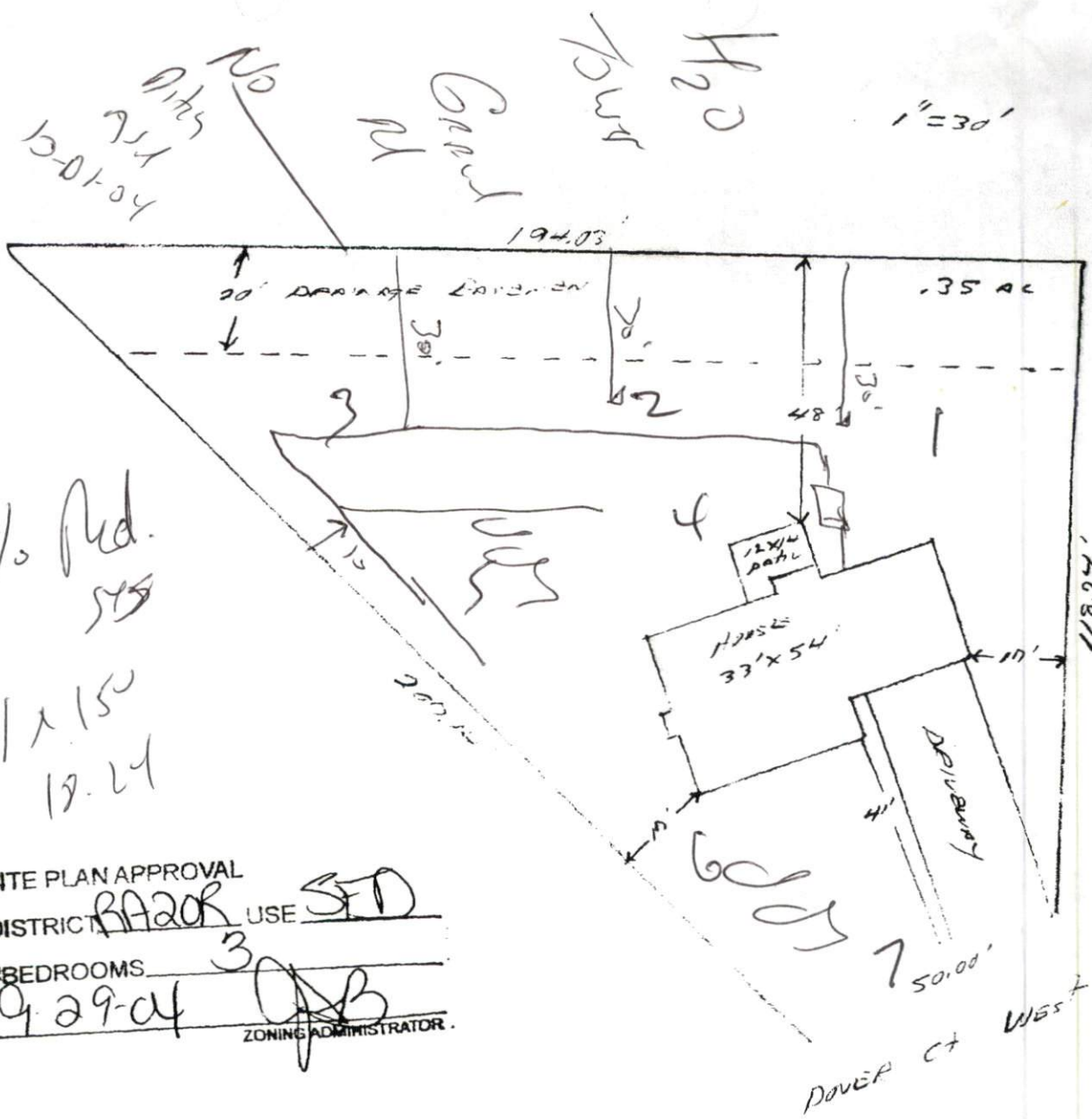
MINERALOGY

SLIGHTLY EXPANSIVE
EXPANSIVE

Show profile locations and other site features (dimensions, reference or benchmark, and North).



(#####)



25% Red.
 5/5
 1 x 150
 18.24

SITE PLAN APPROVAL
 DISTRICT RA20K USE SED
 #BEDROOMS 3
9.29.04
 ZONING ADMINISTRATOR

Wm. Kent PIERCE, INC
Lot # 12 Highland Forest
 (The 100th St. Area)