

**SOIL/SITE EVALUATION
 for ON-SITE WASTEWATER SYSTEM**

Owner: *Page Real Estate*

Applicant:

Address:

Date Evaluated: *9-13-04*

Proposed Facility: *3BR*

Design Flow (.1949): *360*

Property Size:

Location of Site: *New Horizons Subdivision*

Property Recorded:

- Water Supply: Public Individual Well Spring Other
- Evaluation Method: Auger Boring Pit Cut
- Type of Wastewater: Sewage Industrial Process Mixed

Profile #	1940 Landscape Position/Slope%	Horizon Depth (IN.)	SOIL MORPHOLOGY .1941		OTHER PROFILE FACTORS				Profile Class & LTAR
			.1941 Structure/Texture	.1941 Consistence Mineralogy	.1942 Soil Wetness/Color	.1943 Soil Depth (IN.)	.1956 Sapro Class	.1944 Restr Hcriz	
1	<i>L27</i>	<i>0-14</i>	<i>SL/LS Gc</i>	<i>Fi</i>	<i>NS NP</i>				<i>0.5 PS</i>
		<i>14-44"</i>	<i>SCL SBK</i>	<i>Fi</i>	<i>SSSP</i>				
		<i>44-48"</i>	<i>SCL SBK</i>	<i>Fi/Fi</i>	<i>SP</i>	<i>104R</i>	<i>6/2</i>		
2		<i>0-18"</i>	<i>SL Gc</i>	<i>Fi</i>	<i>NS NP</i>				<i>0.5 PS</i>
		<i>18-38"</i>	<i>SCL SBK</i>	<i>Fi</i>	<i>SSSP</i>				
		<i>38-46"</i>	<i>SCL SBK</i>	<i>Fi</i>	<i>SP</i>	<i>104R</i>	<i>5/2</i>		
3	<i>Horizon 6</i>	<i>0-14"</i>	<i>SL Gc</i>	<i>Fi</i>	<i>NS NP</i>				<i>0.5 PS</i>
		<i>14-34"</i>	<i>SCL/SL SBK</i>	<i>Fi</i>	<i>SSSP</i>				
		<i>34-42"</i>	<i>SCL SBK</i>	<i>Fi</i>	<i>SP</i>				
		<i>42"+</i>	<i>SCL SBK</i>	<i>Fi</i>		<i>104R</i>	<i>6/2</i>		

Description	Initial System	Repair System
Available Space (.1945)	<i>PS</i>	<i>PS</i>
System Type(s)	<i>LOW</i>	<i>LOW</i>
Site LTAR	<i>0.5</i>	<i>0.5</i>

Other Factors (.1946): *Soil wetness*

Site Classification (.1948): *PS*

Evaluated By: *WNC*

Others Present:

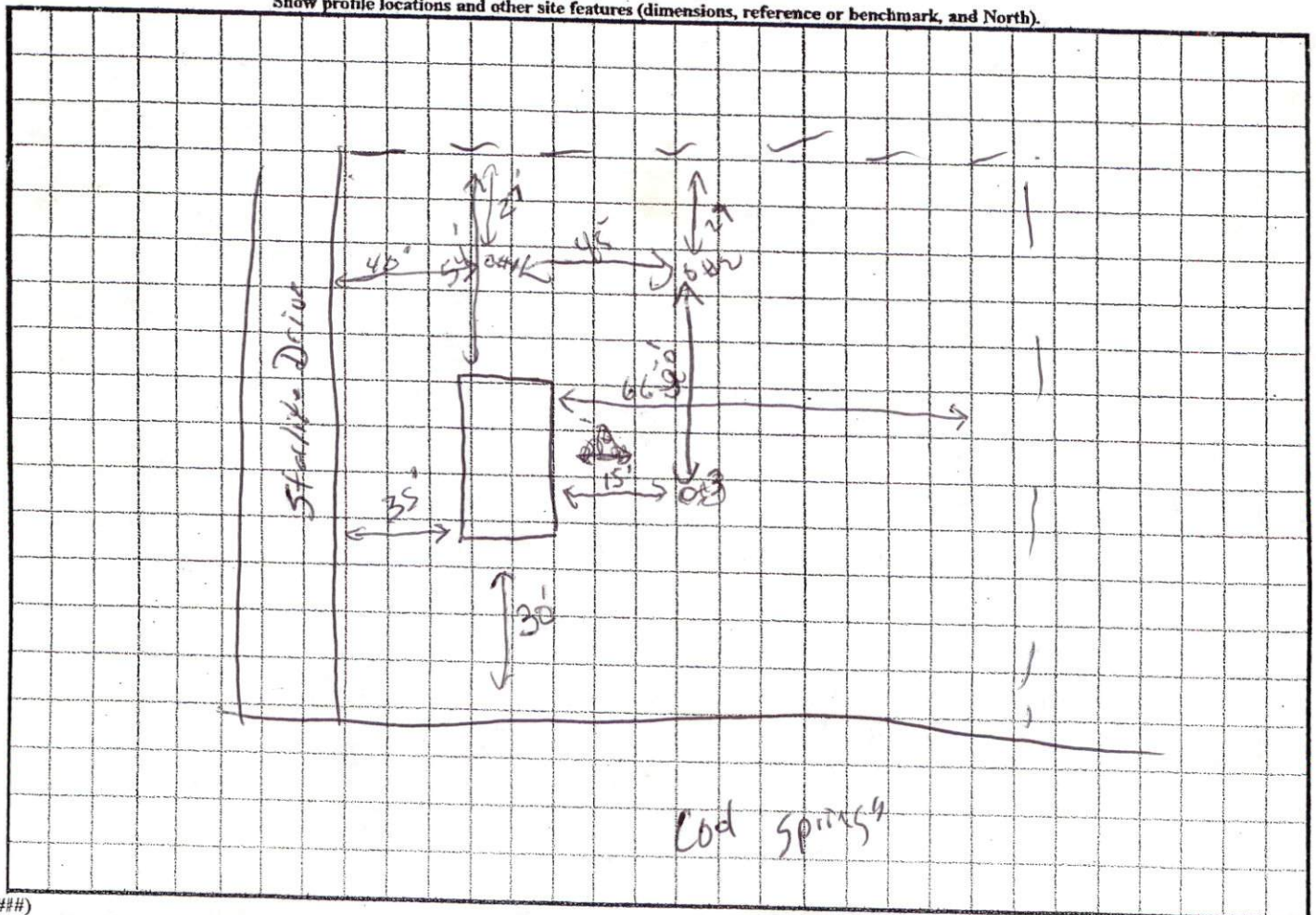
COMMENTS: _____

LANDSCAPE POSITIONS	GROUP	TEXTURES	.1955 LTAR	CONSISTENCE MOIST	WET
R-RIDGE	I	S-SAND	1.2 - 0.8	VFR-VERY FRIABLE	NS-NON-STICKY
S-SHOULDER SLOPE		LS-LOAMY SAND			
L-LINEAR SLOPE	II	SL-SANDY LOAM	0.8 - 0.6	FR-FRIABLE	SS-SLIGHTLY STICKY
FS-FOOT SLOPE		L-LOAM			
N-NOSE SLOPE	III	SI-SILT-	0.6 - 0.3	FI-FIRM	VS-VERY STICKY
H-HEAD SLOPE		SIL-SILT LOAM			
CC-CONCLAVE SLOPE		CL-CLAY LOAM			
CV-CONVEX SLOPE		SCL-SANDY CLAY LOAM			
T-TERRACE	IV	SIC-SILTY CLAY	0.4 - 0.1	EFI-EXTREMELY FIRM	NP-NON-PLASTIC
FP-FLOOD PLAN		C-CLAY			
		SC-SANDY CLAY			SP-SLIGHTLY STICKY
					P-PLASTIC
					VP-VERY PLASTIC

STRUCTURE
 SG-SINGLE GRAIN
 M-MASSIVE
 CR-CRUMB
 GR-GRANULAR
 SBK-SUBANGULAR BLOCKY
 ABK-ANGULAR BLOCKY
 PL-PLATY
 PR-PRISMATIC

MINERALOGY
 SLIGHTLY EXPANSIVE
 EXPANSIVE

Show profile locations and other site features (dimensions, reference or benchmark, and North).



SITE PLAN APPROVAL

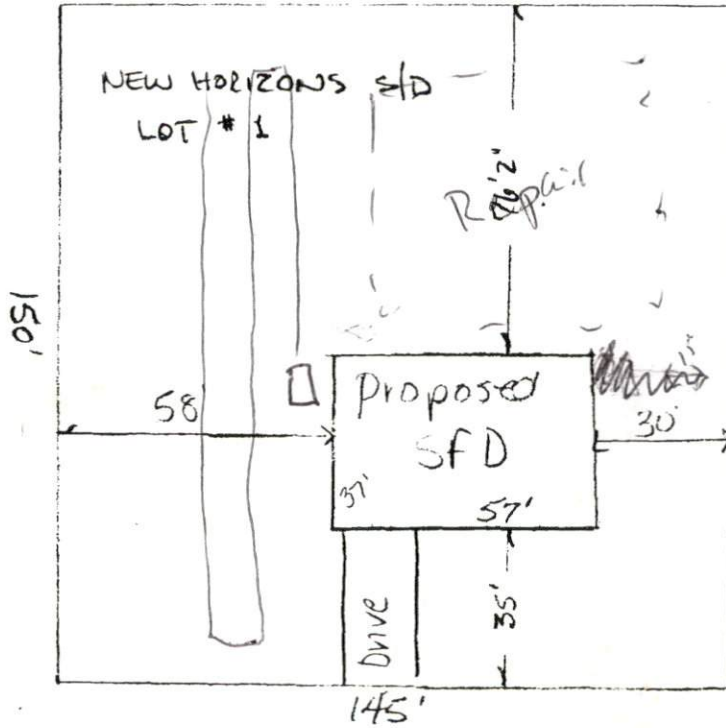
DISTRICT RAZOR USE SFD

#BEDROOMS 3

Date 8/3/04 Plussell
Zoning Administrator

0.5 ⁷²⁰/₅₁₀

²⁴⁰/₃₇₂₀



3x80
240
664
1328
1610
1915

STARLITE DRIVE

COOL SPRINGS CHURCH ROAD SR 1265

SCALE - 1/4" = 10'

1=40

LOT # 17

WEST