

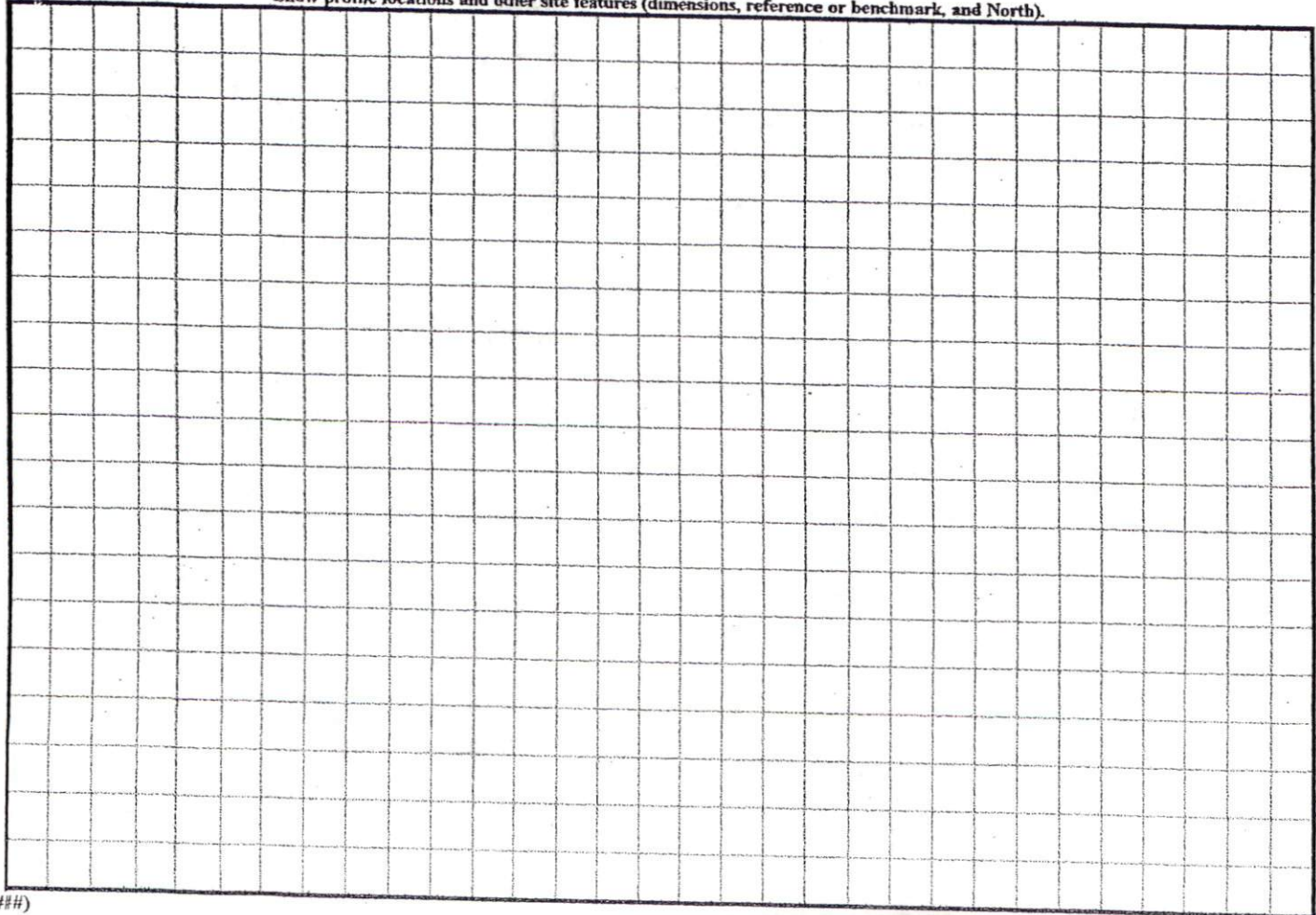
COMMENTS: _____

<u>LANDSCAPE POSITIONS</u>	<u>GROUP</u>	<u>TEXTURES</u>	<u>.1955 LTAR</u>	<u>CONSISTENCE MOIST</u>	<u>WET</u>
R-RIDGE	I	S-SAND	1.2 - 0.8	VFR-VERY FRIABLE	NS-NON-STICKY
S-SHOULDER SLOPE		LS-LOAMY SAND			
L-LINEAR SLOPE	II	SL-SANDY LOAM	0.8 - 0.6	FR-FRIABLE	SS-SLIGHTLY STICKY
FS-FOOT SLOPE		L-LOAM			
N-NOSE SLOPE	III	SI-SILT-	0.6 - 0.3	FI-FIRM	S-STICKY
H-HEAD SLOPE		SIL-SILT LOAM			
CC-CONCLAVE SLOPE		CL-CLAY LOAM			
CV-CONVEX SLOPE		SCL-SANDY CLAY LOAM			
T-TERRACE	IV	SIC-SILTY CLAY	0.4 - 0.1	VFI-VERY FIRM	VS-VERY STICKY
FP-FLOOD PLAN		C-CLAY			
		SC-SANDY CLAY			
		SICL-SILTY CLAY LOAM		EFI-EXTREMELY FIRM	NP-NON-PLASTIC
					SP-SLIGHTLY STICKY
					P-PLASTIC
					VP-VERY PLASTIC

STRUCTURE
 SG-SINGLE GRAIN
 M-MASSIVE
 CR-CRUMB
 GR-GRANULAR
 SBK-SUBANGULAR BLOCKY
 ABK-ANGULAR BLOCKY
 PL-PLATY
 PR-PRISMATIC

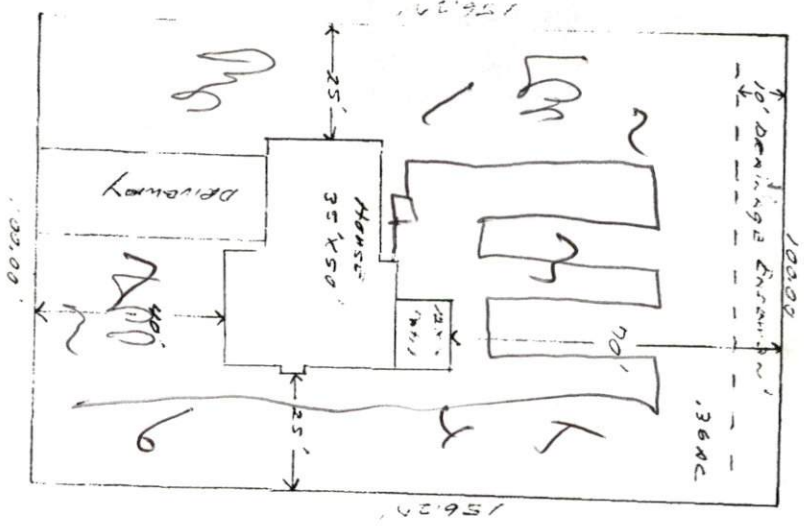
MINERALOGY
 SLIGHTLY EXPANSIVE
 EXPANSIVE

Show profile locations and other site features (dimensions, reference or benchmark, and North).



Wm Kent Perry Inc.
 Lot 11 to Highway 200
 (The Oxford Inn)

Highway 200



SITE PLAN APPROVAL
 DISTRICT BA20B USE SFD
 #BEDROOMS 3
B. J. Perry
 ZONING ADMINISTRATOR

[Handwritten signature]

1" = 30'