

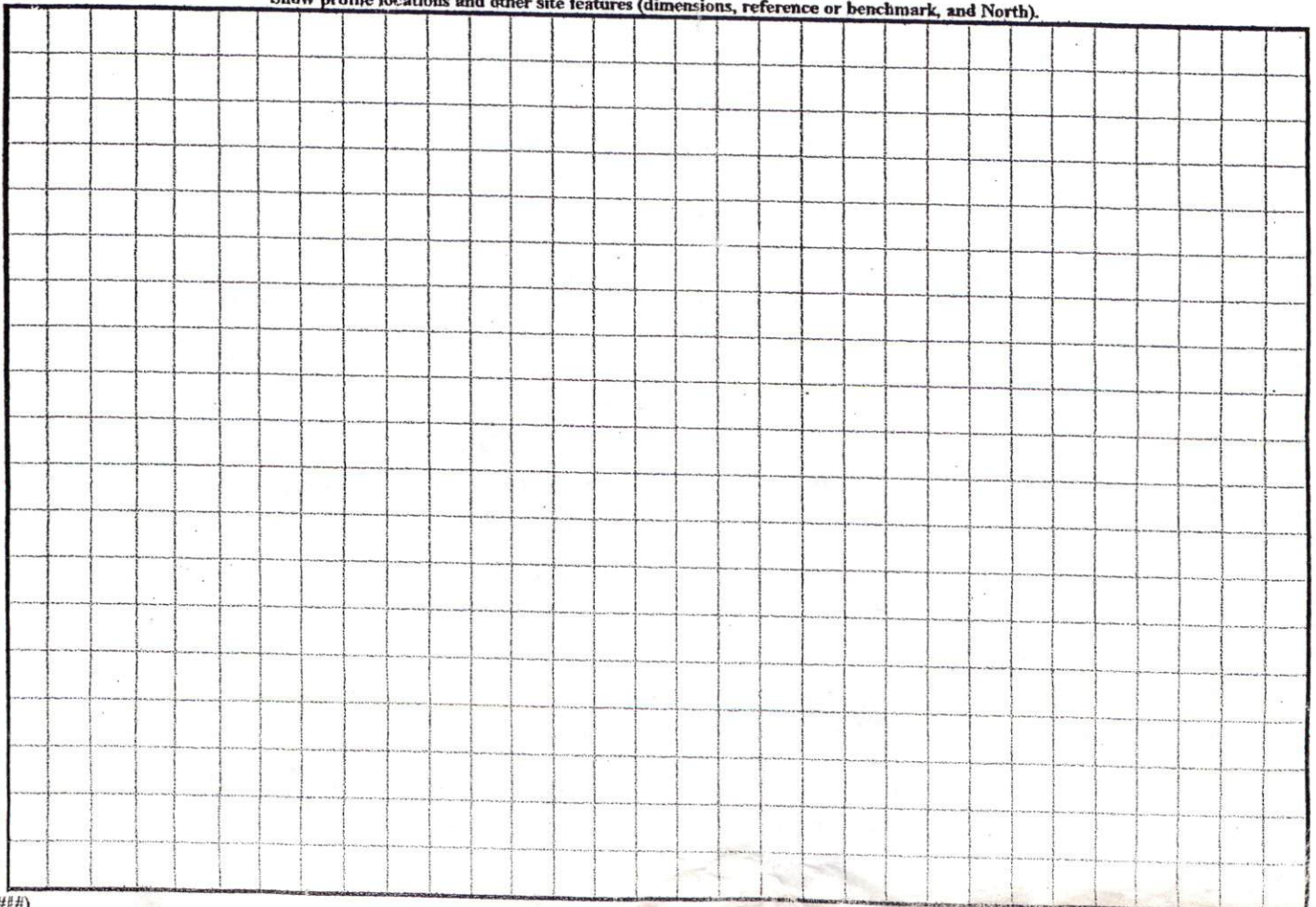
COMMENTS: _____

<u>LANDSCAPE POSITIONS</u>	<u>GROUP</u>	<u>TEXTURES</u>	<u>.1955 LTAR</u>	<u>CONSISTENCE MOIST</u>	<u>WET</u>
R-RIDGE	I	S-SAND	1.2 - 0.8	VFR-VERY FRIABLE	NS-NON-STICKY
S-SHOULDER SLOPE		LS-LOAMY SAND			
L-LINEAR SLOPE	II	SL-SANDY LOAM	0.8 - 0.6	FR-FRIABLE	SS-SLIGHTLY STICKY
FS-FOOT SLOPE		L-LOAM			
N-NOSE SLOPE	III	SI-SILT-	0.6 - 0.3	FI-FIRM	S-STICKY
H-HEAD SLOPE		SIL-SILT LOAM			
CC-CONCLAVE SLOPE	IV	CL-CLAY LOAM	0.4 - 0.1	VFI-VERY FIRM	VS-VERY STICKY
CV-CONVEX SLOPE		SCL-SANDY CLAY LOAM			
T-TERRACE		SIC-SILTY CLAY		EFI-EXTREMELY FIRM	NP-NON-PLASTIC
FP-FLOOD PLAN		C-CLAY			SP-SLIGHTLY STICKY
		SC-SANDY CLAY			P-PLASTIC
					VP-VERY PLASTIC

STRUCTURE
 SG-SINGLE GRAIN
 M-MASSIVE
 CR-CRUMB
 GR-GRANULAR
 SBK-SUBANGULAR BLOCKY
 ABK-ANGULAR BLOCKY
 PL-PLATY
 PR-PRISMATIC

MINERALOGY
 SLIGHTLY EXPANSIVE
 EXPANSIVE

Show profile locations and other site features (dimensions, reference or benchmark, and North).



SITE PLAN APPROVAL

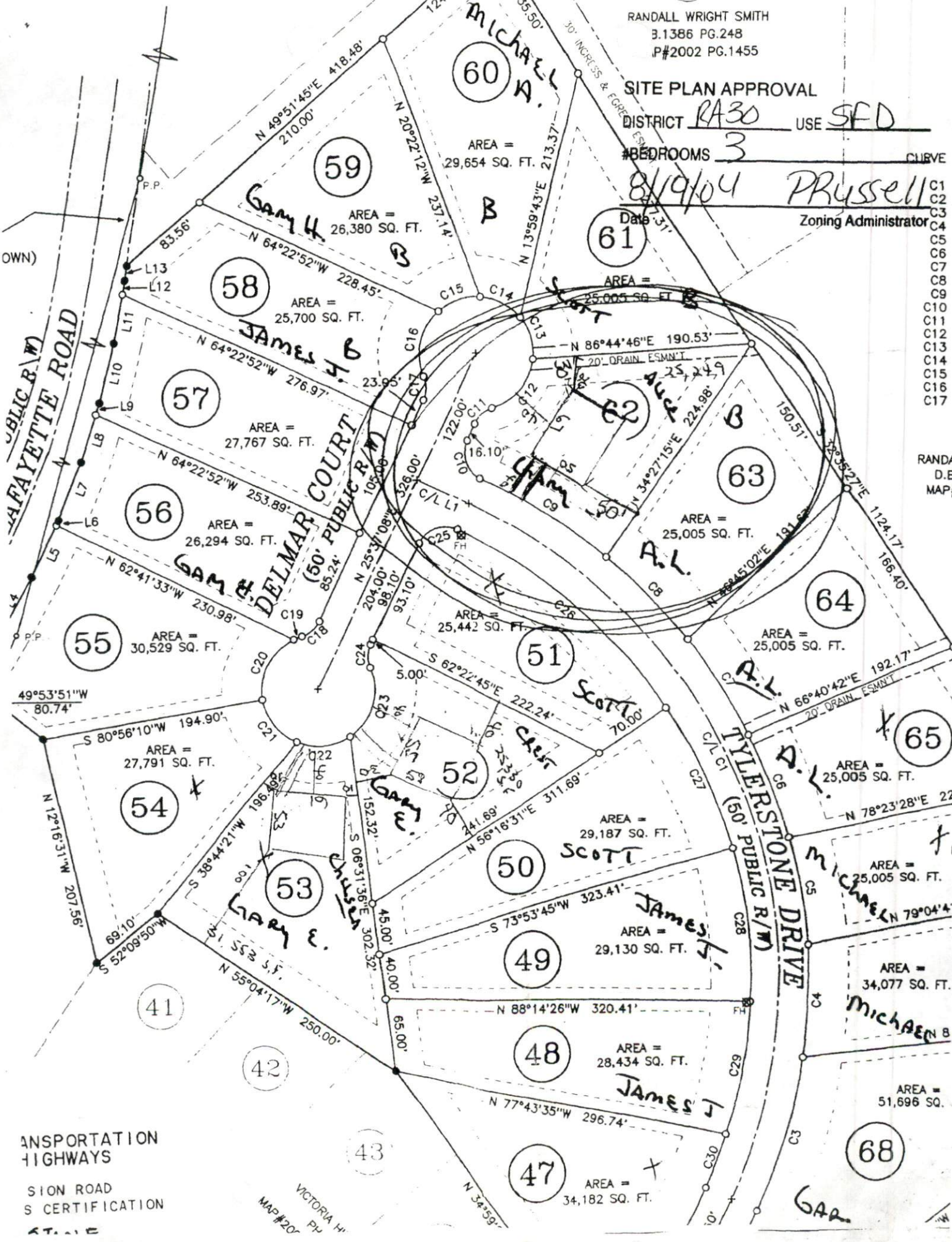
DISTRICT RA30 USE SFD

#BEDROOMS 3

Date 8/19/04
PRUSSER
Zoning Administrator

- C1
- C2
- C3
- C4
- C5
- C6
- C7
- C8
- C9
- C10
- C11
- C12
- C13
- C14
- C15
- C16
- C17

RANDALL WRIGHT SMITH
D.B. MAP #



TRANSPORTATION HIGHWAYS
SIGN ROAD
S CERTIFICATION
STATE

VICTORIA HWY
MAP #207