

HAL OWEN & ASSOCIATES, INC.

SOIL & ENVIRONMENTAL SCIENTISTS

P. O. Box 400, 266 Old Coats Road

Lillington, NC 27546

Phone (910) 893-8743 / Fax (910) 893-3594

E-mail: halowen@intrstar.net

3 February 2005

Mr. Oliver Tolksdorf
Harnett County Environmental Health
307 West Cornelius Harnett Blvd.
Lillington, NC 27546

Reference: Septic System Design Modification
Victoria Hills II – Lot 61

Dear Mr. Tolksdorf,

Enclosed are the septic system design revisions for the above referenced property that we had discussed at our site meeting on 2 February 2005. The new proposed initial septic system utilizes a pump to serial distribution of 300 linear feet of innovative drainlines. The repair septic system remains unaltered from the original proposal that consisted of a low-pressure pipe distribution system with a pretreatment filter because of limited depths to unsuitable layers within the 12-inch treatment zone below the trench bottom.

I trust that this report provides all the information that you require at this time. If you have any questions or need additional information, please contact me at your convenience.

Sincerely,



Laura J. Fortner
Licensed Soil Scientist

Lot 61, Victoria Hills Phase 7

On-Site Wastewater Design Specifications

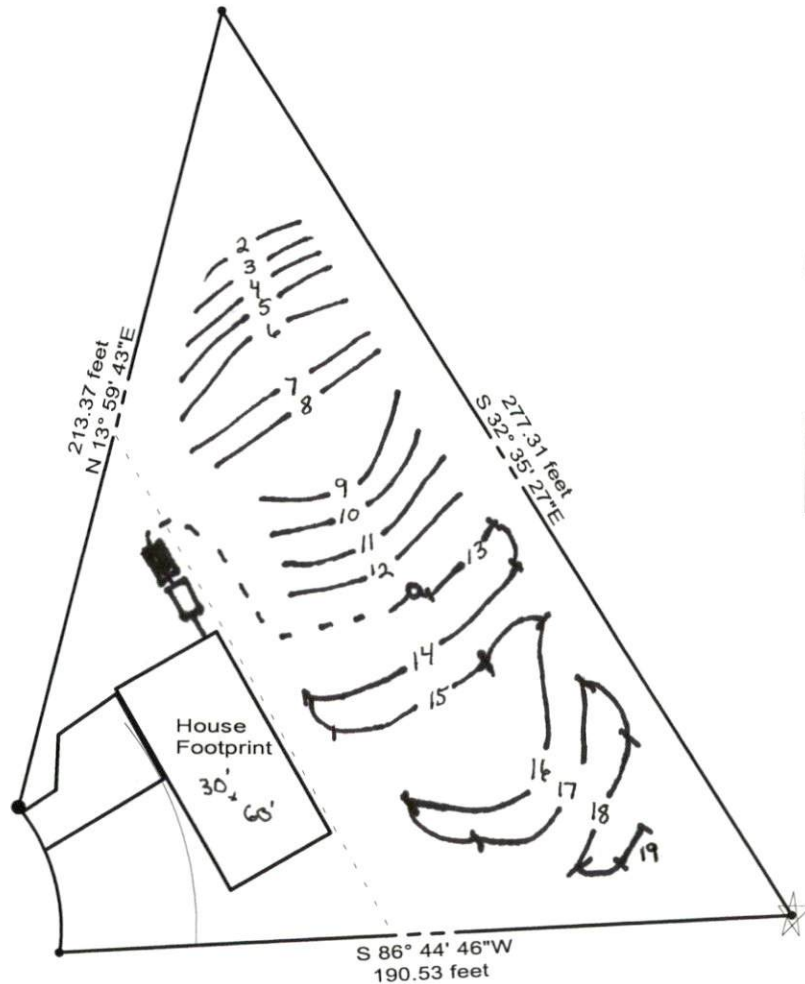
Prepared By: LJJ
Hal Owen & Associates, Inc.
Soil & Environmental Scientists
P.O. Box 400, 266 Old Coats Rd.
Lillington, NC 27546-0400
Phone: (910) 893-8743

House Footprint: 30' x 60' (No Foundation Drain)
Bedrooms: 3 (Daily Flow 360 gpd/sqft)

Initial System: Pump Innovative Serial Distr. (300-ft)
on contour at: 12 inches
Soil LTAR: 0.3 gpd/sqft
Repair System: Pretreatment Filter with
Low-Pressure Pipe Distribution (540-ft)
on contour at: 12 inches
LTAR: 0.13 gpd/sqft

LEGEND

☆	EIP	□	Septic Tank
⊞	Step-down	■	Pump Tank
⊙	Proposed Well	⊕	D-Box
⊗	Existing Well	⊞	Pressure Manifold



Lot 61, Victoria Hills II

Lines 1-12 flagged at site on 5-ft centers.

Lines 12-18 flagged at site on 9-ft centers.

Initial/Repair	Line #	Color	Drainline Length(ft)	Measured Field Line Length (ft)	Relative Elevation (ft)
N/A	1	W	0	23	105.91
Repair	2	B	28	28	105.87
Repair	3	R	35	35	105.70
Repair	4	Y	42	42	105.49
Repair	5	W	49	49	105.25
Repair	6	B	53	53	105.09
Repair	7	R	55	55	104.83
Repair	8	Y	52	54	104.75
Repair	9	W	55	58	104.44
Repair	10	B	56	58	104.33
Repair	11	Y	57	58	104.20
Repair	12	R	58	58	104.04
Initial	13	Y	25	25	103.81
Initial	14	W	68	68	103.57
Initial	15	B	33	33	103.35
Initial	16	R	73	73	103.13
Initial	17	Y	61	61	102.70
Initial	18	B	30	30	102.13
Initial	19	-	10	10	-
Pump Tank:					104.16
Total:			840	871	EIP = 100

