

**SOIL/SITE EVALUATION
 for ON-SITE WASTEWATER SYSTEM**

Owner: _____ Applicant: _____
 Address: _____ Date Evaluated: _____
 Proposed Facility: *House* Design Flow (.1949): *360* Property Size: _____
 Location of Site: *HF* Property Recorded: _____
 Water Supply: Public [] Individual [] Well [] Spring [] Other
 Evaluation Method: Auger Boring [] Pit [] Cut
 Type of Wastewater: Sewage [] Industrial Process [] Mixed

1940 Landscape Position/ Slope%	Horizon Depth (IN.)	SOIL MORPHOLOGY .1941		OTHER PROFILE FACTORS				Profile Class & LTAR
		.1941 Structure/ Texture	.1941 Consistence Mineralogy	1942 Soil Wetness/ Color	.1943 Soil Depth (IN.)	.1956 Sapro Class	.1944 Restr Horiz	
	0-24	<i>SL</i>	<i>FM/GA</i>	<i>10YR 8/6</i>	<i>4/</i>			
	24-48	<i>SCL</i>	<i>FM/GA</i>	<i>10YR 6/6</i>				
	0-24	<i>SL</i>	<i>FR/GA</i>	<i>10YR 8/6</i>	<i>4/</i>			
	24-48	<i>SCL</i>	<i>FR/GA</i>	<i>10YR 6/6</i>				
	0-24	<i>SL</i>	<i>FR/GA</i>	<i>10YR 8/6</i>	<i>4/</i>			
	24-48	<i>SCL</i>	<i>FR/GA</i>	<i>10YR 6/6</i>				
	0-24	<i>SL</i>	<i>FR/GA</i>	<i>10YR 8/6</i>	<i>4/</i>			
	24-48	<i>SCL</i>	<i>FR/GA</i>	<i>10YR 6/6</i>				
	0-24	<i>SL</i>	<i>FR/GA</i>	<i>10YR 8/6</i>	<i>4/</i>			
	24-48	<i>SCL</i>	<i>FR/GA</i>	<i>10YR 6/6</i>				
	0-24	<i>SL</i>	<i>FR/GA</i>	<i>10YR 8/6</i>	<i>4/</i>			
	24-48	<i>SCL</i>	<i>FR/GA</i>	<i>10YR 6/6</i>				
	0-24	<i>SL</i>	<i>FR/GA</i>	<i>10YR 8/6</i>	<i>4/</i>			
	24-48	<i>SCL</i>	<i>FR/GA</i>	<i>10YR 6/6</i>				

Description	Initial System	Repair System
Available Space (.1945)		
System Type(s)	<i>Gravel</i>	<i>LPP</i>
Site LTAR	<i>.6</i>	<i>.3</i>

Other Factors (.1946): _____
 Site Classification (.1948): _____
 Evaluated By: *[Signature]*
 Others Present: *Holes by hand*

Change to 25% Red. To save space

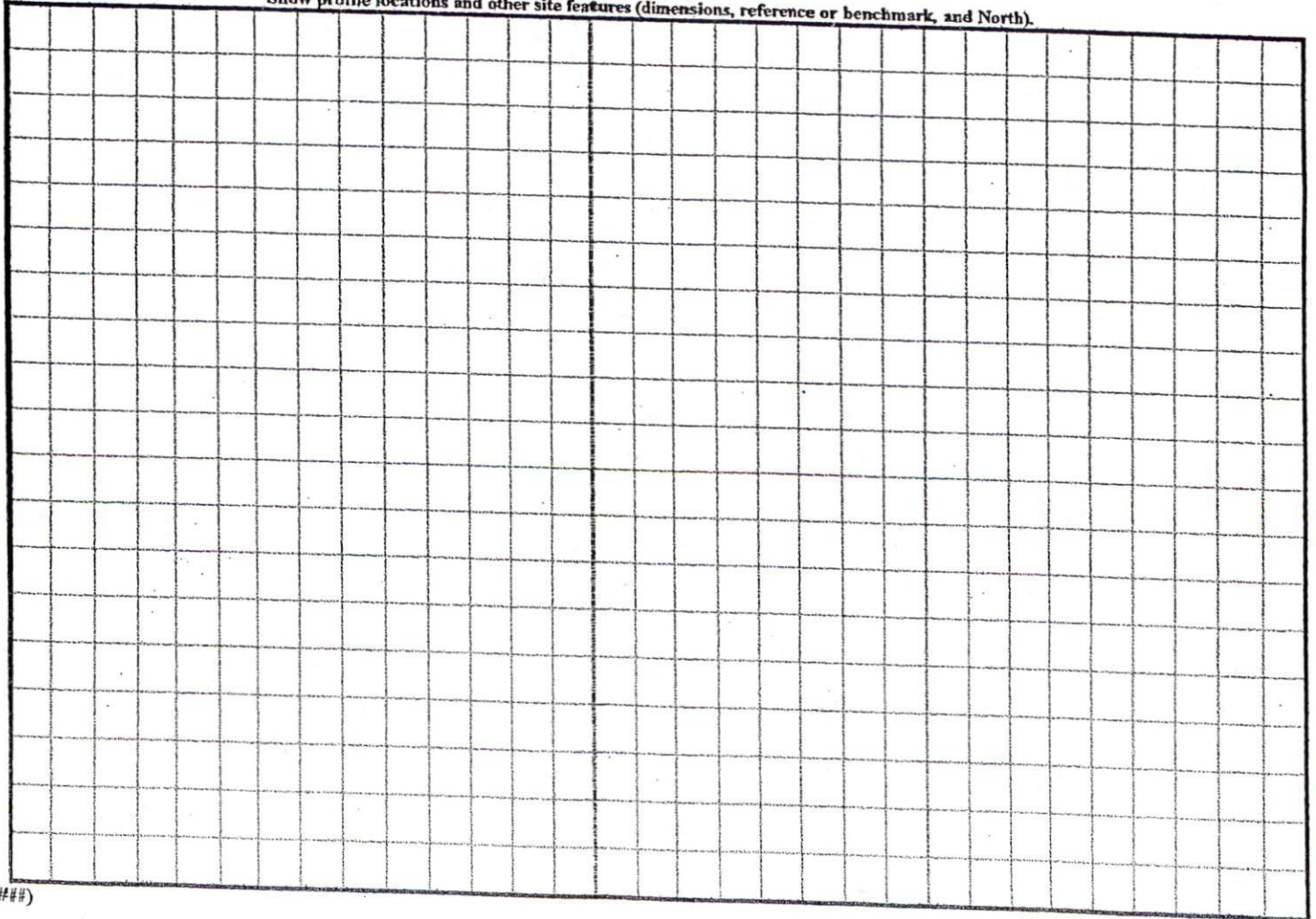
COMMENTS: _____

<u>LANDSCAPE POSITIONS</u>	<u>GROUP</u>	<u>TEXTURES</u>	<u>.1955 LTAR</u>	<u>CONSISTENCE MOIST</u>	<u>WET</u>
R-RIDGE	I	S-SAND	1.2 - 0.8	VFR-VERY FRIABLE FR-FRIABLE FI-FIRM VFI-VERY FIRM EFI-EXTREMELY FIRM	NS-NON-STICKY SS-SLIGHTLY STICKY S-STICKY VS-VERY STICKY NP-NON-PLASTIC SP-SLIGHTLY STICKY P-PLASTIC VP-VERY PLASTIC
S-SHOULDER SLOPE		LS-LOAMY SAND			
L-LINEAR SLOPE	II	SL-SANDY LOAM	0.8 - 0.6		
FS-FOOT SLOPE		L-LOAM			
N-NOSE SLOPE	III	SI-SILT-	0.6 - 0.3		
H-HEAD SLOPE		SIL-SILT LOAM			
CC-CONCLAVE SLOPE		CL-CLAY LOAM			
CV-CONVEX SLOPE		SCL-SANDY CLAY LOAM			
T-TERRACE	IV	SIC-SILTY CLAY	0.4 - 0.1		
FP-FLOOD PLAN		C-CLAY			
		SC-SANDY CLAY			

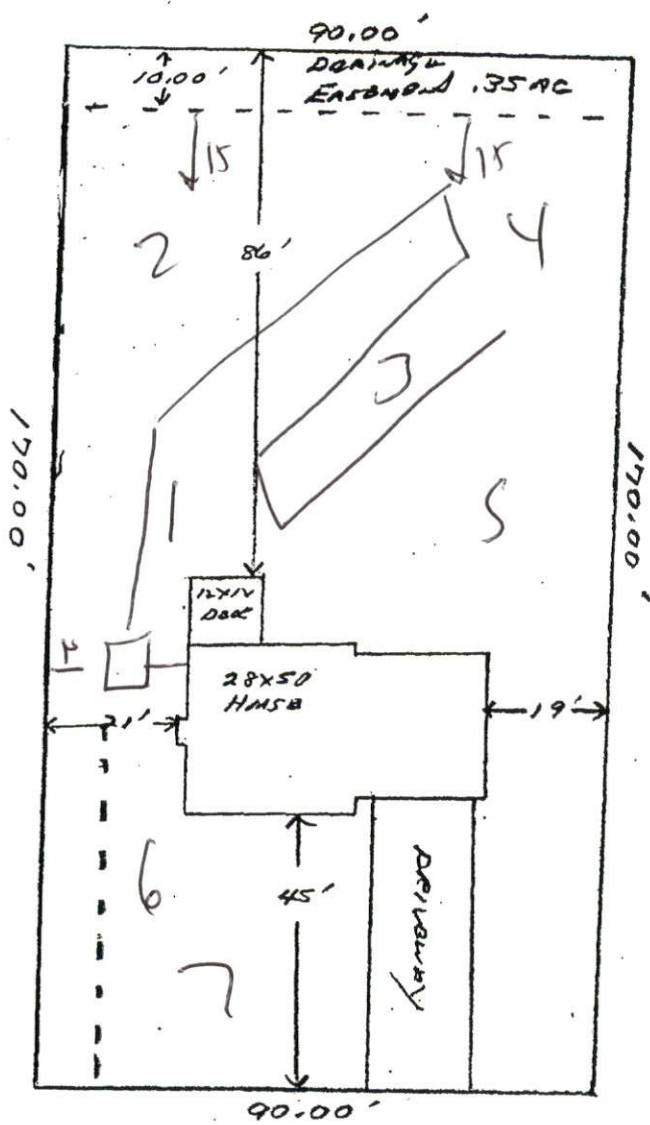
- STRUCTURE
 SG-SINGLE GRAIN
 M-MASSIVE
 CR-CRUMB
 GR-GRANULAR
 SBK-SUBANGULAR BLOCKY
 ABK-ANGULAR BLOCKY
 PL-PLATY
 PR-PRISMATIC

- MINERALOGY
 SLIGHTLY EXPANSIVE
 EXPANSIVE

Show profile locations and other site features (dimensions, reference or benchmark, and North).



1" = 30'



X 150
 67% h.t.
 1820

CAMDEN COURT EAST

SITE PLAN APPROVAL

DISTRICT R20R USE SFD

#BEDROOMS 3

1030-04

ZONING ADMINISTRATOR

Wm. KENT PIERCE, INC.

Lot # 127 Highland Forest

(The Grayson - Plan)