

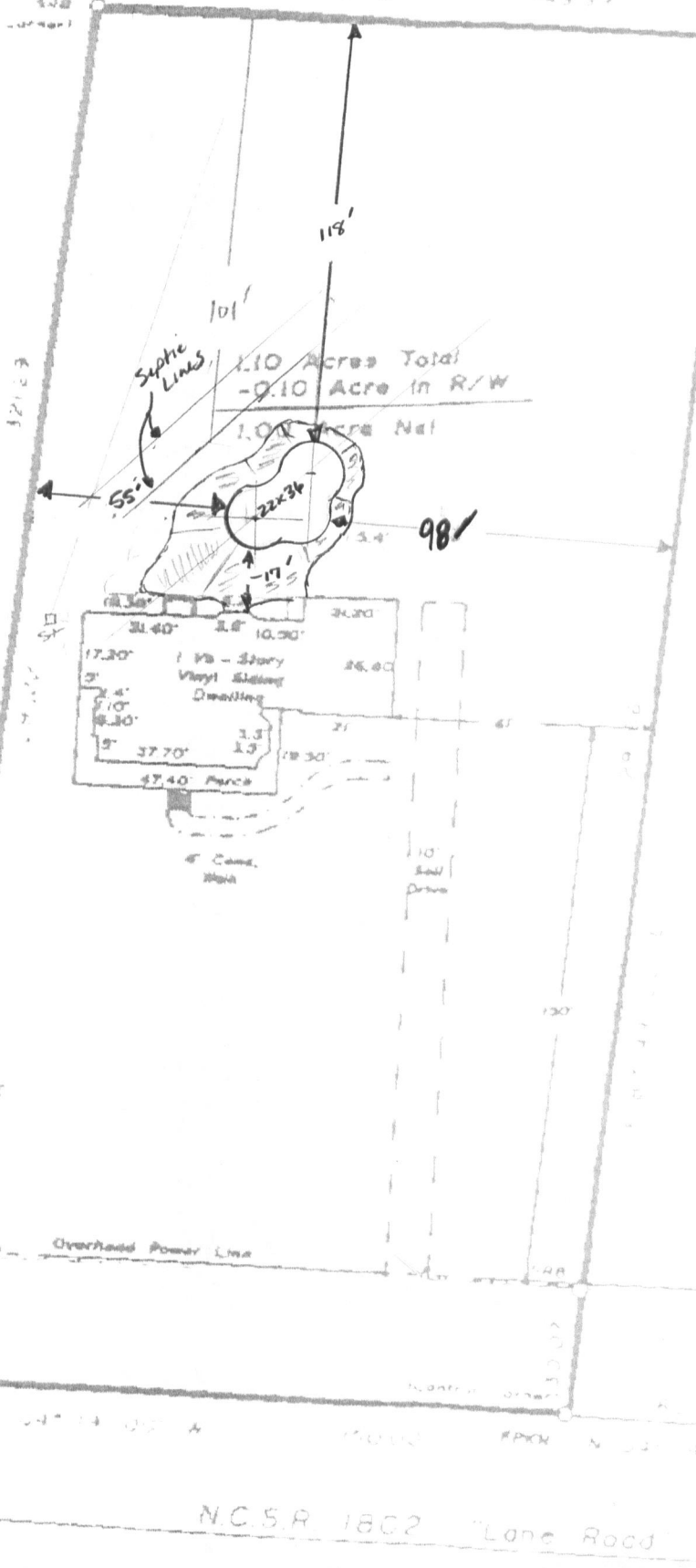
NW 13500 30811 R

4 24° 22' 40" E

142 (Control Corner)

139 13

A. B. Parker, Jr.
 Book 714, Page 757-759
 "A. B. Parker Estate"
 Plat Cabinet 1 Slide 168



1000' Corner of
 24" The 1/8"
 02 recorded
 17- Slide 168
 2- Register

1" = 40'

NOTE: 1.10 acres surveyed being a portion of 1
 deeded to A. B. Parker, Jr. as recorded
 Book 714, Page 757-759, Harrell County

