

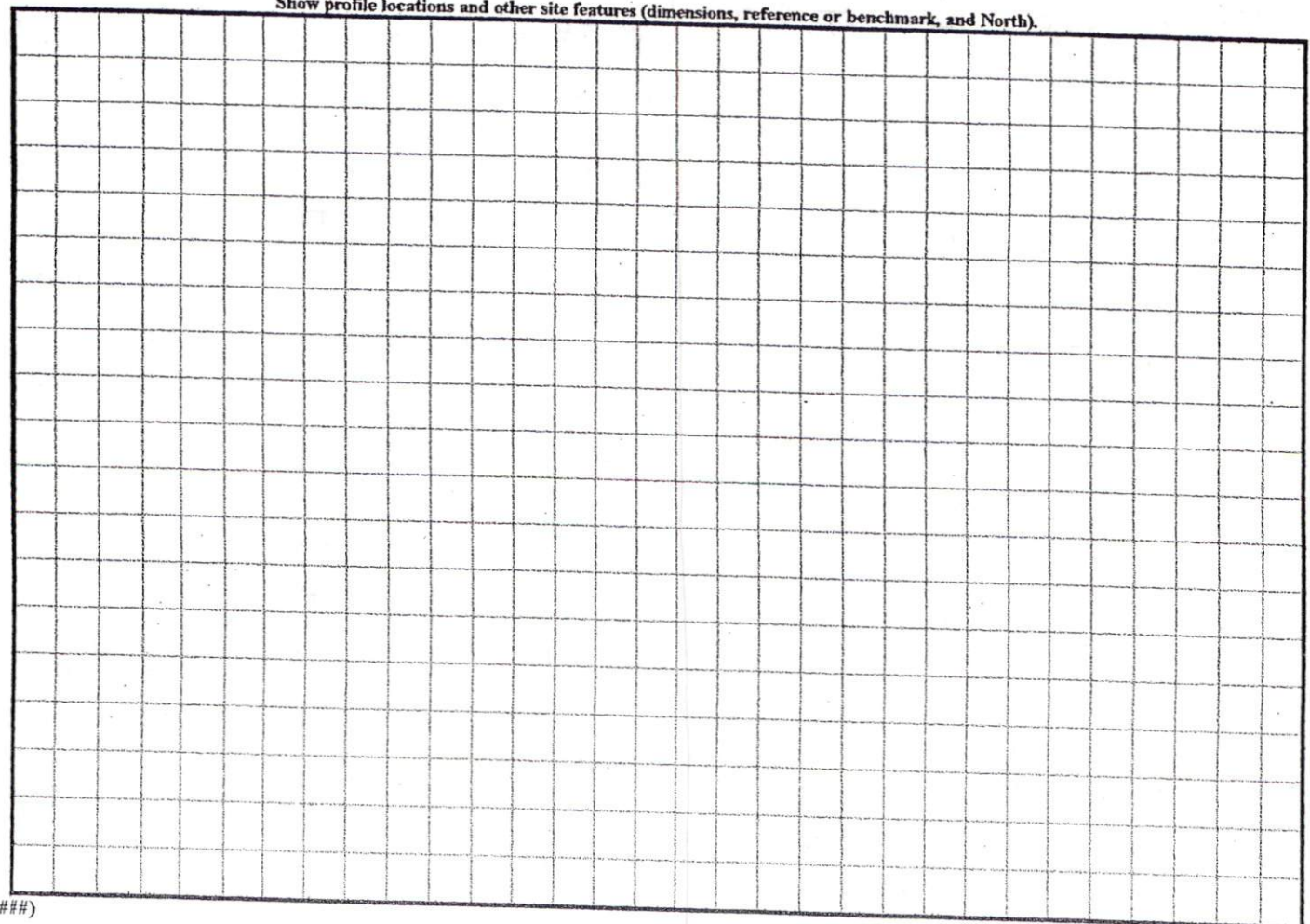
COMMENTS: _____

<u>LANDSCAPE POSITIONS</u>	<u>GROUP</u>	<u>TEXTURES</u>	<u>.1955 LTAR</u>	<u>CONSISTENCE MOIST</u>	<u>WET</u>
R-RIDGE	I	S-SAND	1.2 - 0.8	VFR-VERY FRIABLE FR-FRIABLE FI-FIRM VFI-VERY FIRM EFI-EXTREMELY FIRM	NS-NON-STICKY SS-SLIGHTLY STICKY S-STICKY VS-VERY STICKY NP-NON-PLASTIC SP-SLIGHTLY STICKY P-PLASTIC VP-VERY PLASTIC
S-SHOULDER SLOPE		LS-LOAMY SAND			
L-LINEAR SLOPE	II	SL-SANDY LOAM	0.8 - 0.6		
FS-FOOT SLOPE		L-LOAM			
N-NOSE SLOPE	III	SI-SILT-	0.6 - 0.3		
H-HEAD SLOPE		SIL-SILT LOAM			
CC-CONCLAVE SLOPE		CL-CLAY LOAM			
CV-CONVEX SLOPE		SCL-SANDY CLAY LOAM			
T-TERRACE		SICL-SILTY CLAY LOAM			
FP-FLOOD PLAN	IV	SIC-SILTY CLAY	0.4 - 0.1		
		C-CLAY			
		SC-SANDY CLAY			

STRUCTURE
 SG-SINGLE GRAIN
 M-MASSIVE
 CR-CRUMB
 GR-GRANULAR
 SBK-SUBANGULAR BLOCKY
 ABK-ANGULAR BLOCKY
 PL-PLATY
 PR-PRISMATIC

MINERALOGY
 SLIGHTLY EXPANSIVE
 EXPANSIVE

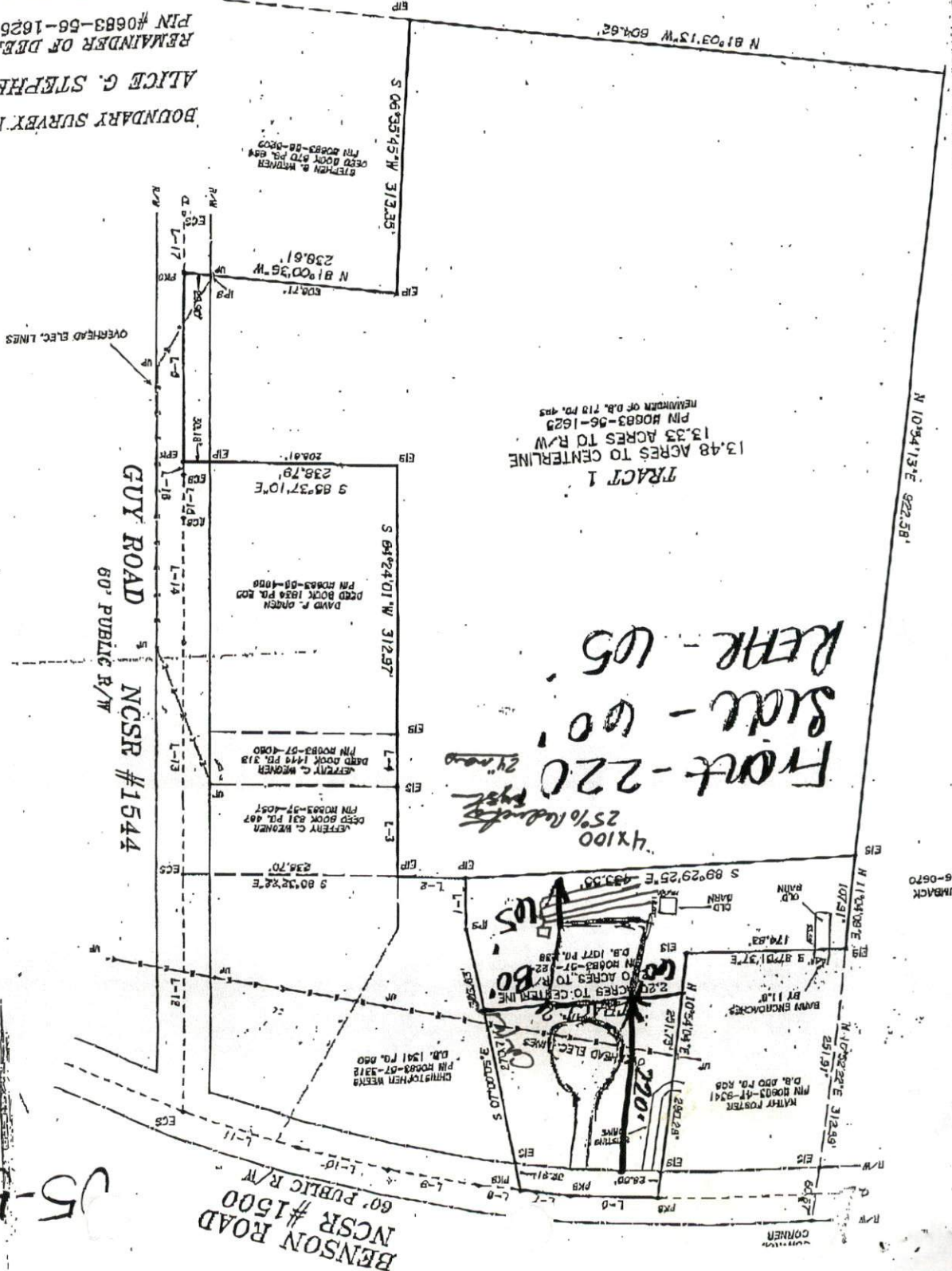
Show profile locations and other site features (dimensions, reference or benchmark, and North).



(#####)

BOUNDARY SURVEY 1
 ALICE G. STEPHI
 REMAINDER OF DEE
 PIN #0683-56-1626
 DEAD BOOK 1077 PC
 PIN #0683-57-1224
 BLACK RIVER TOWN
 HARNETT COUNTY

NOW OR FORMERLY
 HUGHIE E. GARDNER
 PIN #0683-44-7892



TRACT 1
 13.48 ACRES TO CENTERLINE
 PIN #0683-56-1623
 REMAINDER OF D.B. 712 P.O. 495

4x100
 25% Indenture
 Front - 220'
 Side - 60'
 Rear - 65'

BENSON ROAD
 NCSR #1500
 60' PUBLIC R/W

GUY ROAD
 60' PUBLIC R/W
 NCSR #1544

05-00012674

EVN

N 10°34'13"E 822.58'

BURBACK
 1-45-0670