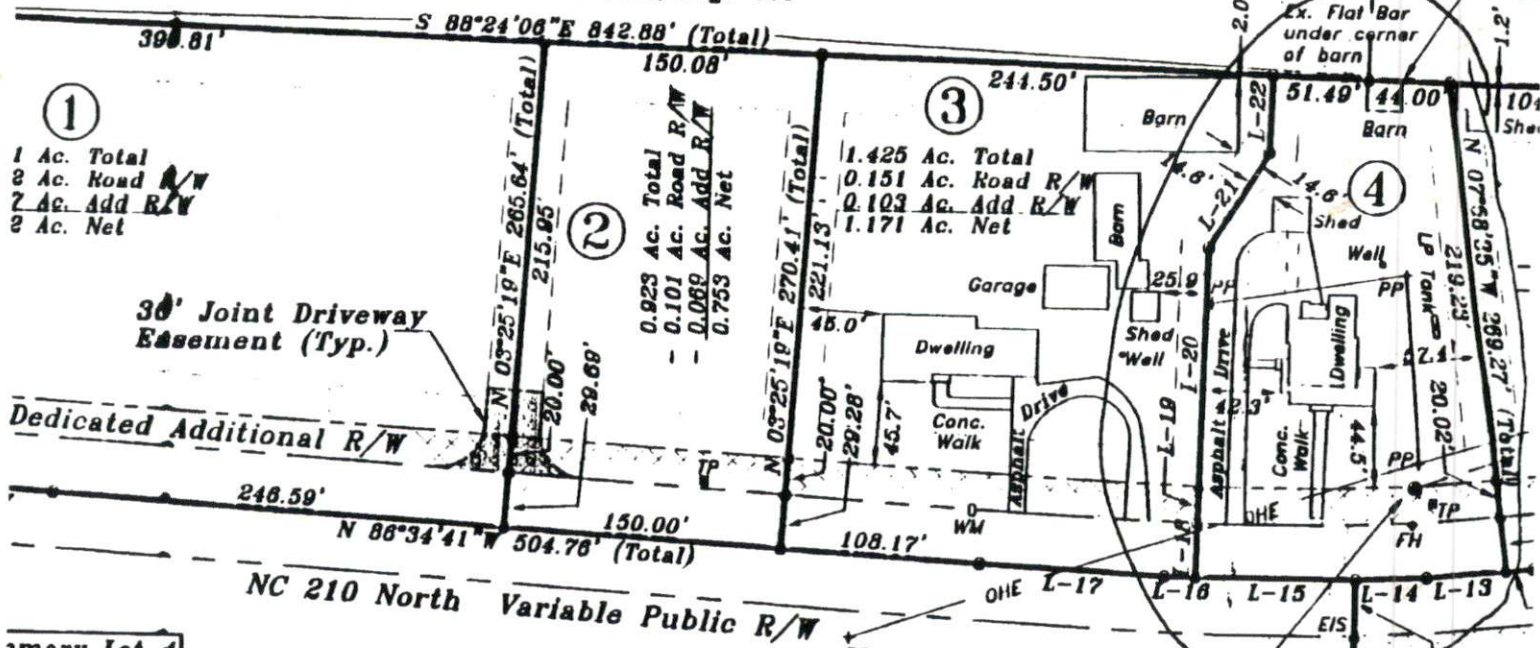


075 0019104

L-14-38'
L-15-58'
L-17-43'

L-18-29'
L-19-20'
L-20-17'
L-21-62'
L-22-41'

ZONED: RA-30
Susan P. Ogburn Trustee
Deed Book 1742, Page 444



①
1 Ac. Total
2 Ac. Road R/W
7 Ac. Add R/W
2 Ac. Net

②
0.923 Ac. Total
- 0.101 Ac. Road R/W
- 0.089 Ac. Add R/W
0.753 Ac. Net

③
1.425 Ac. Total
0.151 Ac. Road R/W
0.103 Ac. Add R/W
1.171 Ac. Net

④
0.151 Ac. Road R/W

30' Joint Driveway Easement (Typ.)

Dedicated Additional R/W

NC 210 North Variable Public R/W

Summary Lot 4
a. Total
c. Road R/W
c. Add R/W
c. Net

NCGS "DUPREE"
N = 194,862.312 Meters
E = 635,069.014 Meters



NC Grid North (NAD 83/86)
per adjustment 07-02-05

Town of Angier
Minimum Building Setbacks
Zoned RA-30

Front: 40'
Side Line: 15'
Corner Lot by Street: 40'
Rear Line: 30'

HAZARD STATEMENT
this plat are not
the FEMA 100 year
area as shown on
37200688200J
OCTOBER 3, 2006

certify that this plat was drawn
actual survey made under my
recorded in Book See, Page Ref., etc.)
of surveyed are clearly indicated
and in Book 88, Page Shown;
calculated in 1:10,000+; that this
scale with G. S. 47-30 as amended.
registration number and seal
used on A. D., 2007.

ZONED: RA-30
Lola K. Hines
Will Book 2003-E, Page 145
Deed Book 218, Page 474
Deed Book 1129, Page 300
Deed Book 1131, Page 97
Deed Book 1180, Page 73

P.F. 813.46' (Total)
3.40