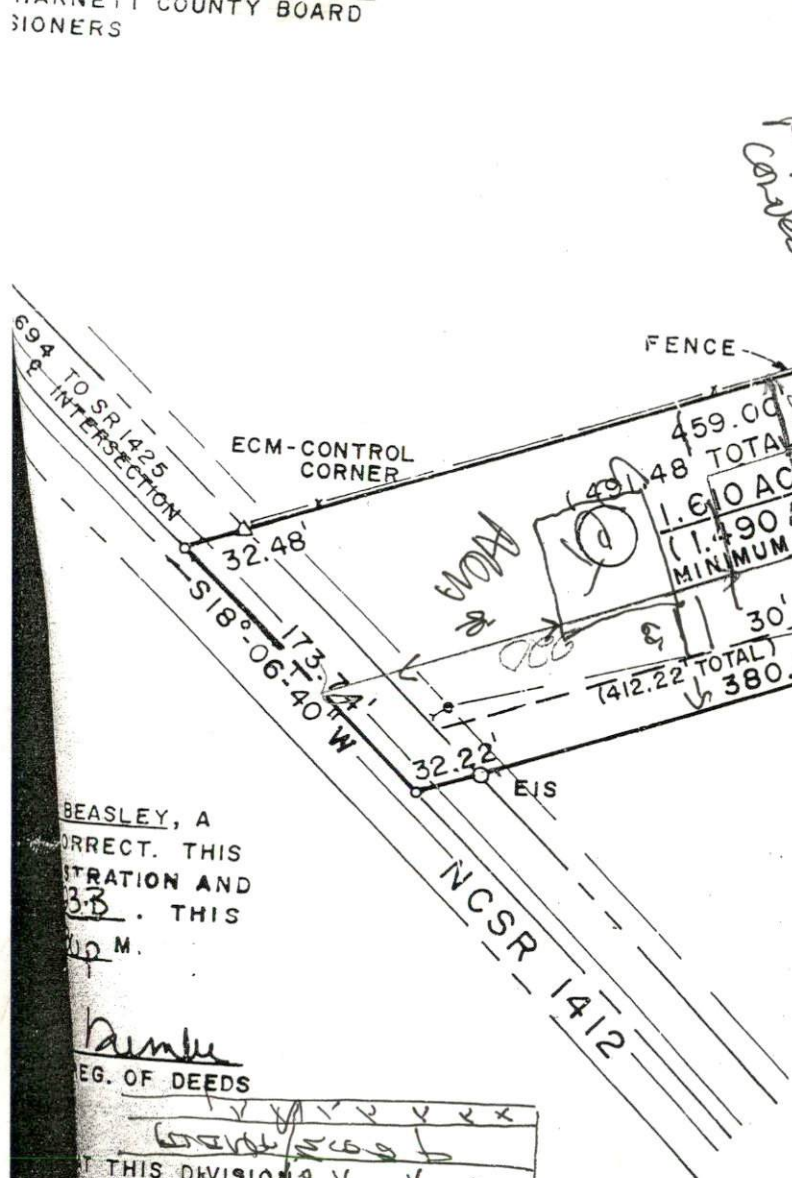


SITE/SOIL EVALUATION FOR ON-SITE WASTEWATER

APPLICANT NAME _____

| FACTORS | | PROFILES | | | | | | | | | |
|---------------------------|-------------|----------|----|-------|----|----|---|---|---|---|----|
| | | 1 | 2 | 3 | 4 | 5 | 6 | 7 | 8 | 9 | 10 |
| LANDSCAPE POSITION | .1940 | L | L | L | L | L | | | | | |
| SLOPE (%) | .1940 | 2 | 2 | 2 | 2 | 2 | | | | | |
| HORIZON 1 DEPTH | | 0-30 | | 0-18 | | | | | | | |
| Texture Group | .1941(A)(1) | SL | | SL | | | | | | | |
| Consistence | .1941 | PL | | PL | | | | | | | |
| Structure | .1941(A)(2) | GM | | GM | | | | | | | |
| Mineralogy | .1941(A)(3) | NSNP | | NSNP | | | | | | | |
| HORIZON 2 DEPTH | | | | 18-36 | | | | | | | |
| Texture Group | .1941(A)(1) | | | SL | | | | | | | |
| Consistence | .1941 | | | PL | | | | | | | |
| Structure | .1941(A)(2) | | | GM | | | | | | | |
| Mineralogy | .1941(A)(3) | | | NSNP | | | | | | | |
| HORIZON 3 DEPTH | | | | | | | | | | | |
| Texture Group | .1941(A)(1) | | | | | | | | | | |
| Consistence | .1941 | | | | | | | | | | |
| Structure | .1941(A)(2) | | | | | | | | | | |
| Mineralogy | .1941(A)(3) | | | | | | | | | | |
| HORIZON 4 DEPTH | | | | | | | | | | | |
| Texture Group | .1941(A)(1) | | | | | | | | | | |
| Consistence | .1941 | | | | | | | | | | |
| Structure | .1941(A)(2) | | | | | | | | | | |
| Mineralogy | .1941(A)(3) | | | | | | | | | | |
| SOIL WETNESS | .1942 | 24 | 18 | 36 | 32 | 36 | | | | | |
| RESTRICTIVE HORIZON | .1944 | | | | | | | | | | |
| SAPROLITE | .1943/.1956 | | | | | | | | | | |
| CLASSIFICATION | .1948 | | | | | | | | | | |
| LONG TERM ACCEPTANCE RATE | .1955 | - | - | .04 | .3 | .4 | | | | | |



BEASLEY, A
CORRECT. THIS
ISTRATION AND
33. THIS
M.

REG. OF DEEDS

THIS DIVISION

LOTS TO BE

| | | | | | | | | | | | | | | | | | | | |
|---|---|---|---|---|---|---|---|---|----|----|----|----|----|----|----|----|----|----|----|
| 1 | 2 | 3 | 4 | 5 | 6 | 7 | 8 | 9 | 10 | 11 | 12 | 13 | 14 | 15 | 16 | 17 | 18 | 19 | 20 |
| | | | | | | | | | | | | | | | | | | | |

DATE

SITE PLAN APPROVAL
DISTRICT RA30 USE Mobile home
#BEDROOMS 3
Date 3/17/03
Zoning Administrator [Signature]

(NOW OR FORMERLY)
TYREE SENTER

12/00

I HEREBY CERTIFY THAT THIS RECORD PLAT COMPLETES THE SUBDIVISION REGULATIONS OF HARNETT COUNTY, NORTH CAROLINA; AND THAT THIS PLAT HAS BEEN APPROVED FOR RECORDING IN THE REGISTER OF DEEDS IN HARNETT COUNTY.
DATE 3-1-01 Paula & William
PLANNING DIRECTOR

FINAL PLAT
SHERROD FOREST SUBDIVISION

NORTH CAROLINA Johnston COUNTY
I, Vickie C. Beasley, A NOTARY PUBLIC OF THE COUNTY
AND STATE AFORESAID CERTIFY THAT L. Dennis Ice
A REGISTERED LAND SURVEYOR

BUCKHORN TWP. HARNETT COUNTY
NORTH CAROLINA
SCALE 1" = 100'