

NOT to Scale

SITE PLAN APPROVAL

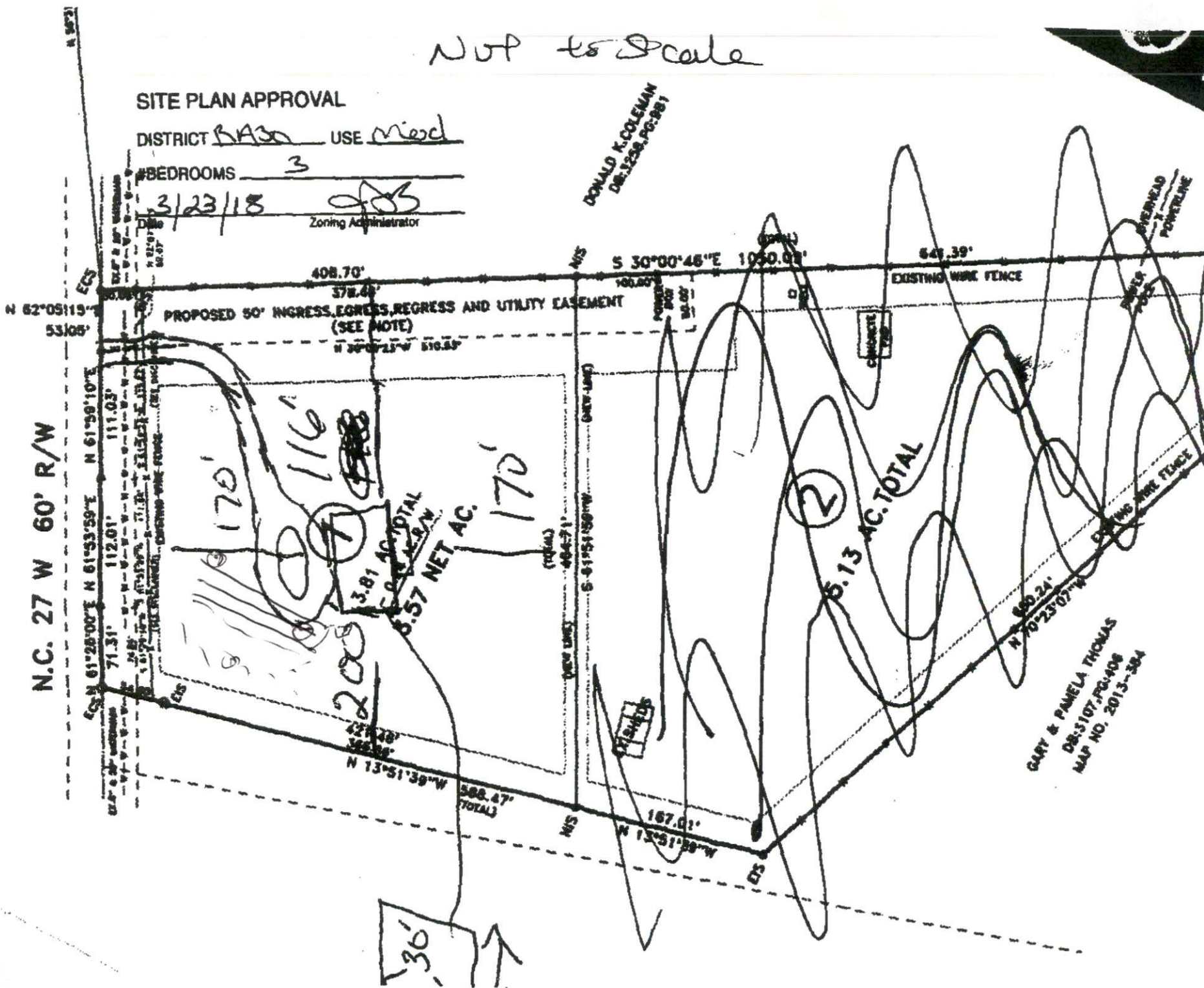
DISTRICT B30 USE Med

#BEDROOMS 3

3/23/18

[Signature]
Zoning Administrator

DONALD K. COLEMAN
DB-1228, PG-281



GARY & PAMELA THOMAS
DB-3107, PG-408
MAP NO. 2013-384