

CON. MON. N 54°53'52" E
74.00'

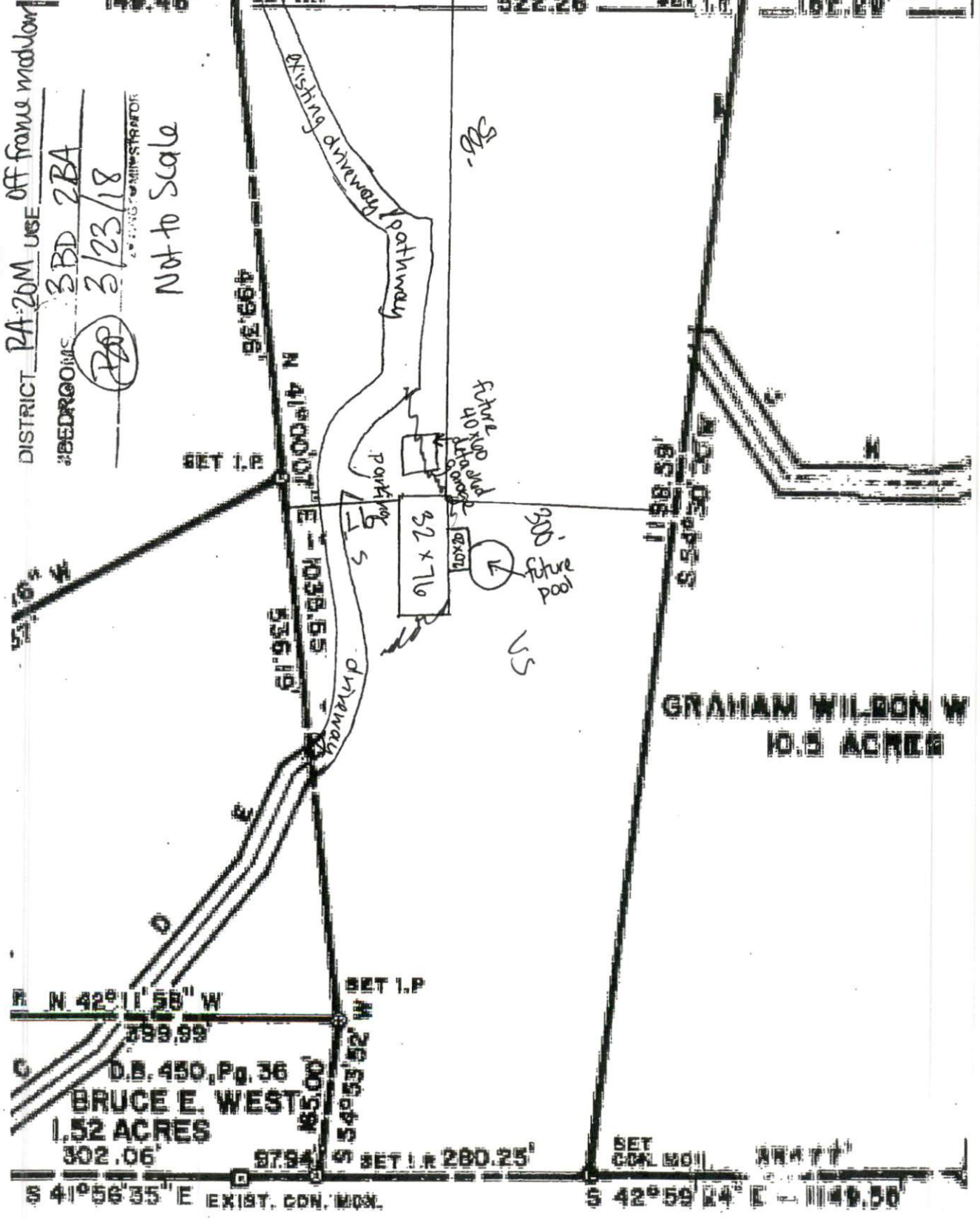
GREAT DANE LANE

N 42°26'53" W - 334.00'

EXIST. CON. MON.

SET L.P. 149.46' SET L.P. 522.26' SET L.P. 182.80'

[Signature]
SITE PLAN APPROVAL
DISTRICT PA-26M USE off frame medium
BEDROOMS 3 BD 2 BA
PDR 3/23/18
NOT TO SCALE



GRAHAM WILSON W
10.5 ACRES

N 42°11'55" W
339.99'

D.B. 450, Pg. 36
BRUCE E. WEST
1.52 ACRES

302.06' 87.94' S SET L.P. 280.25' SET CON. MON. 1149.55' S 42°59'14" E EXIST. CON. MON.