



Agri-Waste Technology, Inc.  
5400 Etta Burke Court, Suite 200  
Raleigh, NC 27606  
919.859.0669  
www.agriwaste.com



# *Soils & Site Evaluation Report – On-site Wastewater Systems*

---

---



**Engineers and Soil Scientists**

Agri-Waste Technology, Inc.  
5400 Etta Burke Court, Suite 200  
Raleigh, NC 27606  
919.859.0669  
www.agriwaste.com



**Soils & Site Evaluation Report – On-site Wastewater Systems**

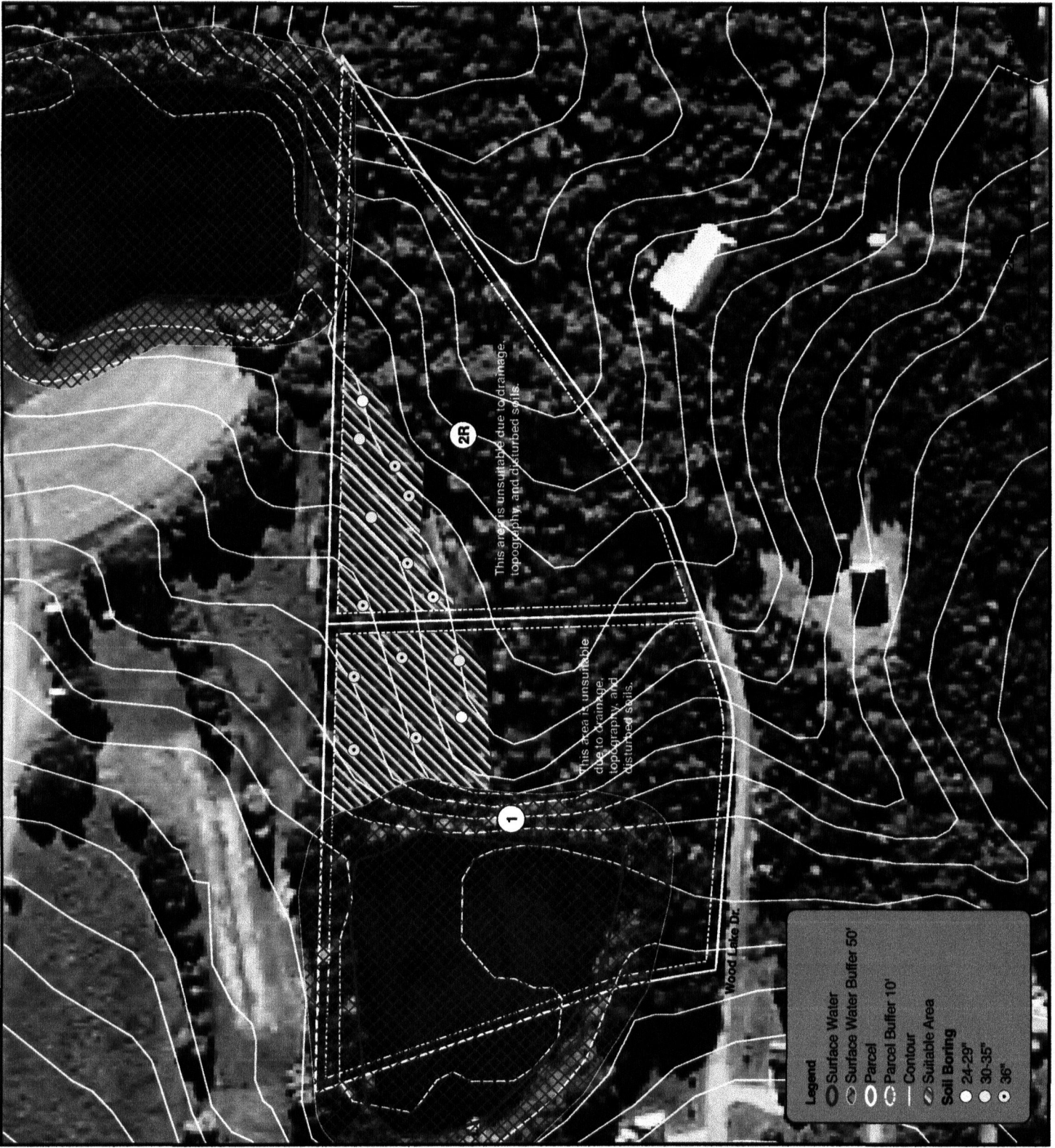
**Lot #1 & Lot #2R – Wood Lake Drive**

**Eric & Carmen Graf Subdivision**

**Harnett County, NC**

( N# - - & - - 2





\*\*\* This map was created for proposed planning purposes only. It is not intended to be used as a plat or survey map of any type. \*\*\*

**AWT**  
Engineers and Soil Scientists

Agri-Wisain Technology, Inc.  
5400 Elita Burke Ct. Suite 200  
Raleigh NC 27606  
P: 919.859.0669  
www.agriwisain.com

**Soil Evaluation Map**

Ragan  
Harnett Co., NC

Pin: 0645-47-8854  
0645-57-3862

Soil Type:  
Bb-Bttb soils  
Ga-Golboro loamy sand  
WeC-Wagram loamy sand

Suitable Area:  
Lot 1 - 23,566 sq.ft.  
Lot 2R - 17,745 sq.ft.



Drawn By: Julie Peete  
Reviewed By: Chris McGee  
Date: 2.7.13



P		P	P
	P		P
	P		
	P		
P	P		

--

EVALUATED BY \_\_\_\_\_  
 COMMENTS \_\_\_\_\_

**LEGEND OF ABBREVIATIONS FOR SITE EVALUATION FORM**

LANDSCAPE POSITION      TEXTURE GROUP      TEXTURE CLASS      .1 55 LTAR

P    P

P P

STRUCTURE

MOIST CONSISTENCE

MOTTLES

WET CONSISTENCE

P P  
 P P

P P

P    P  
 P    P  
 P P    P  
 P    P

**Conventional Septic System Area Computation**Created by: CEM  
Updated on: 2/8/2013

Client Name: *Ragan*  
Number Bedrooms: **3**  
Design Flow (gal/day): 360 (120 gal/day/bedroom, minimum 240 gal/day/dwelling)  
LTAR (gal/day/ft<sup>2</sup>): 0.4  
Trench Bottom Area (ft<sup>2</sup>): 900 (Design flow/LTAR)  
Trench Width (ft): 3  
On-center distance between trenches (ft): 9  
Trench Bottom Length (ft): 300 (Conventional - Pipe & Gravel)

Minimum Field Area Required (ft<sup>2</sup>): 2700 (Trench Bottom Length\*Trench on-center distance)  
Minimum Field Area Required (Innovative) (ft<sup>2</sup>): 2025 (25% reduction from above)  
Total Field Area Required (ft<sup>2</sup>)<sup>(1)</sup>: 6750 (Minimum field area\*2.5)  
Total Field Area Required (Innovative) (ft<sup>2</sup>)<sup>(1)</sup>: 5062.5 (25% reduction from above)  
Total Field Area Required (ft<sup>2</sup>)<sup>(1)</sup>: 8100 (Minimum field area\*3)  
Total Field Area Required (Innovative) (ft<sup>2</sup>)<sup>(1)</sup>: 6075 (25% reduction from above)

(1) Provides for reserve area and soil irregularity, 2.5 to 3 is multiplier.

Client Name: *Ragan*  
Number Bedrooms: **4**  
Design Flow (gal/day): 480 (120 gal/day/bedroom, minimum 240 gal/day/dwelling)  
LTAR (gal/day/ft<sup>2</sup>): 0.4  
Trench Bottom Area (ft<sup>2</sup>): 1200 (Design flow/LTAR)  
Trench Width (ft): 3  
On-center distance between trenches (ft): 9  
Trench Bottom Length (ft): 400 (Conventional - Pipe & Gravel)

Minimum Field Area Required (ft<sup>2</sup>): 3600 (Trench Bottom Length\*Trench on-center distance)  
Minimum Field Area Required (Innovative) (ft<sup>2</sup>): 2700 (25% reduction from above)  
Total Field Area Required (ft<sup>2</sup>)<sup>(1)</sup>: 9000 (Minimum field area\*2.5)  
Total Field Area Required (Innovative) (ft<sup>2</sup>)<sup>(1)</sup>: 6750 (25% reduction from above)  
Total Field Area Required (ft<sup>2</sup>)<sup>(1)</sup>: 10800 (Minimum field area\*3)  
Total Field Area Required (Innovative) (ft<sup>2</sup>)<sup>(1)</sup>: 8100 (25% reduction from above)

(1) Provides for reserve area and soil irregularity, 2.5 to 3 is multiplier.

Client Name: *Ragan*  
Number Bedrooms: **5**  
Design Flow (gal/day): 600 (120 gal/day/bedroom, minimum 240 gal/day/dwelling)  
LTAR (gal/day/ft<sup>2</sup>): 0.4  
Trench Bottom Area (ft<sup>2</sup>): 1500 (Design flow/LTAR)  
Trench Width (ft): 3  
On-center distance between trenches (ft): 9  
Trench Bottom Length (ft): 500 (Conventional - Pipe & Gravel)

Minimum Field Area Required (ft<sup>2</sup>): 4500 (Trench Bottom Length\*Trench on-center distance)  
Minimum Field Area Required (Innovative) (ft<sup>2</sup>): 3375 (25% reduction from above)  
Total Field Area Required (ft<sup>2</sup>)<sup>(1)</sup>: 11250 (Minimum field area\*2.5)  
Total Field Area Required (Innovative) (ft<sup>2</sup>)<sup>(1)</sup>: 8437.5 (25% reduction from above)  
Total Field Area Required (ft<sup>2</sup>)<sup>(1)</sup>: 13500 (Minimum field area\*3)  
Total Field Area Required (Innovative) (ft<sup>2</sup>)<sup>(1)</sup>: 10125 (25% reduction from above)

(1) Provides for reserve area and soil irregularity, 2.5 to 3 is multiplier.