

34

1.06A

938

1495

37

Actual Setbacks

Correct Dimensions

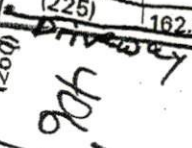
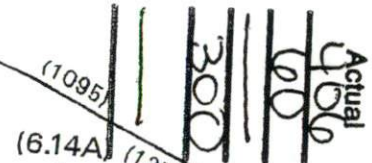
[Handwritten Signature]

[Handwritten Signature]

[Large Handwritten Signature]

NEILLS CREEK TOWNSHIP

GROVE TOWNSHIP



[Handwritten Signature]

SR 1563

AVERY ROAD

USE ST...

7000 Administration

3686

5200

7658

6396

7178

7985

0481

1063

4425

3056

5678

5863

8710

7293

8936

0600

9479

4921

4544

3383

4497

5124

9242

3383

9242

8029

6709

5256

9827

9603

9242

(6.14A) (1375)

(3.52A) (2A)

(1.71A) (380)

(1.22A) (1.39A)

(150.5) (344.8)

(200.9) (52.74)

(151.33) (330)

(1.86A) (280)

(2A) (230)

(1.71A) (380)

(1.22A) (1.39A)

(150.5) (344.8)

(200.9) (52.74)

(151.33) (330)

(1.86A) (280)

(2A) (230)

(1.71A) (380)

(1.22A) (1.39A)

(150.5) (344.8)

(200.9) (52.74)

(151.33) (330)

(1.86A) (280)

(2A) (230)

(1.71A) (380)

(1.22A) (1.39A)

(150.5) (344.8)

(200.9) (52.74)

(151.33) (330)

(1.86A) (280)

(2A) (230)

(1.71A) (380)

(1.22A) (1.39A)

(150.5) (344.8)

(200.9) (52.74)

(151.33) (330)

(1.86A) (280)

(2A) (230)

(1.71A) (380)

(1.22A) (1.39A)

(150.5) (344.8)

(200.9) (52.74)

(151.33) (330)

(1.86A) (280)

(2A) (230)

(1.71A) (380)

(1.22A) (1.39A)

(150.5) (344.8)

(200.9) (52.74)

(151.33) (330)

(1.86A) (280)

(2A) (230)

(1.71A) (380)

(1.22A) (1.39A)

(150.5) (344.8)

(200.9) (52.74)

(151.33) (330)

671.22

(1095)

(1375)

(1095)

(1375)

(1095)

(1375)

(1095)

(1375)

(1095)

(1375)

(1095)

(1375)

(1095)

(1375)

(1095)

(1375)

(1095)

(1375)

(1095)

(1375)

(1095)

(1375)

607.62

(1375)

(1375)

(1375)

(1375)

(1375)

(1375)

(1375)

(1375)

(1375)

(1375)

(1375)

(1375)

(1375)

(1375)

(1375)

(1375)

(1375)

(1375)

(1375)

(1375)

(1375)

(1375)

272

(380)

(380)

(380)

(380)

(380)

(380)

(380)

(380)

(380)

(380)

(380)

(380)

(380)

(380)

(380)

(380)

(380)

(380)

(380)

(380)

(380)

(380)

199B

(380)

(380)

(380)

(380)

(380)

(380)

(380)

(380)

(380)

(380)

(380)

(380)

(380)

(380)

(380)

(380)

(380)

(380)

(380)

(380)

(380)

(380)

151.33

(330)

(330)

(330)

(330)

(330)

(330)

(330)

(330)

(330)

(330)

(330)

(330)

(330)

(330)

(330)

(330)

(330)

(330)

(330)

(330)

(330)

(330)

151.33

(330)

(330)

(330)

(330)

(330)

(330)

(330)

(330)

(330)

(330)

(330)

(330)

(330)

(330)

(330)

(330)

(330)

(330)

(330)

(330)

(330)

(330)

60

(360)

(360)

(360)

(360)

(360)

(360)

(360)

(360)

(360)

(360)

(360)

(360)

(360)

(360)

(360)

(360)

(360)

(360)

(360)

(360)

(360)

(360)

60

(360)

(360)

(360)

(360)

(360)

(360)

(360)

(360)

(360)

(360)

(360)

(360)

(360)

(360)

(360)

(360)

(360)

(360)

(360)

(360)

(360)

(360)

60

(360)

(360)

(360)

(360)

(360)

(360)

(360)

(360)

(360)

(360)

(360)

(360)

(360)

(360)

(360)

(360)

(360)

(360)

(360)

(360)

(360)

(360)



0-18
 3L
 FA
 GR
 NSNP
 18-24
 SCL
 FA
 GR
 NSNP
 24-42
 SC-CL
 SUPA
 SBU
 SSSP
 . 4.