

03-5-5810

HARNETT COUNTY HEALTH DEPARTMENT

10 19817

IMPROVEMENT PERMIT

Be it ordained by the Harnett County Board of Health as follows: Section III, Item B. "No Person shall begin construction of any building at which a septic tank system is to be used for disposal of sewage without first obtaining a written permit from the Harnett County Health Department."

Name: (owner) QUAIL RUN HOMES New Installation Septic Tank
Property Location: SR# 2042 RAYNOR-MCLAMB RD Repairs Nitrification Line

Subdivision _____ Lot # _____

Tax ID # _____ Quadrant # _____

Number of Bedrooms Proposed: 3 Lot Size: 2.035 AC

Basement with Plumbing: Garage:

Water Supply: Well Public Community

Distance From Well: 50 ft.

Following is the minimum specifications for sewage disposal system on above captioned property. Subject to final approval.

Type of system: Conventional Other PUMP TO PRESSURE MANIFOLD TO 25% REC SYS.

Size of tank: Septic Tank: 1000 gallons Pump Tank: 1000 gallons

Subsurface Drainage Field No. of ditches 5 exact length SEE ATTACHED ft. width of ditches 3 ft. depth of ditches 12 in.

French Drain Required: _____ Linear feet

This permit is subject to revocation if site plans or intended use change.

Date: 1/16/03
Signed: [Signature] RS OLIVER TOLKSDORF
Environmental Health Specialist

- *SEE ATTACHED DRAWING
- *MAINTAIN ALL SETBACKS
- *CALL WITH ANY QUESTIONS PRIOR TO INSTALLATION
- *6" OF COVER NEEDED OVER DRAIN FIELD

Mark Ann Rene Wallace F...erty

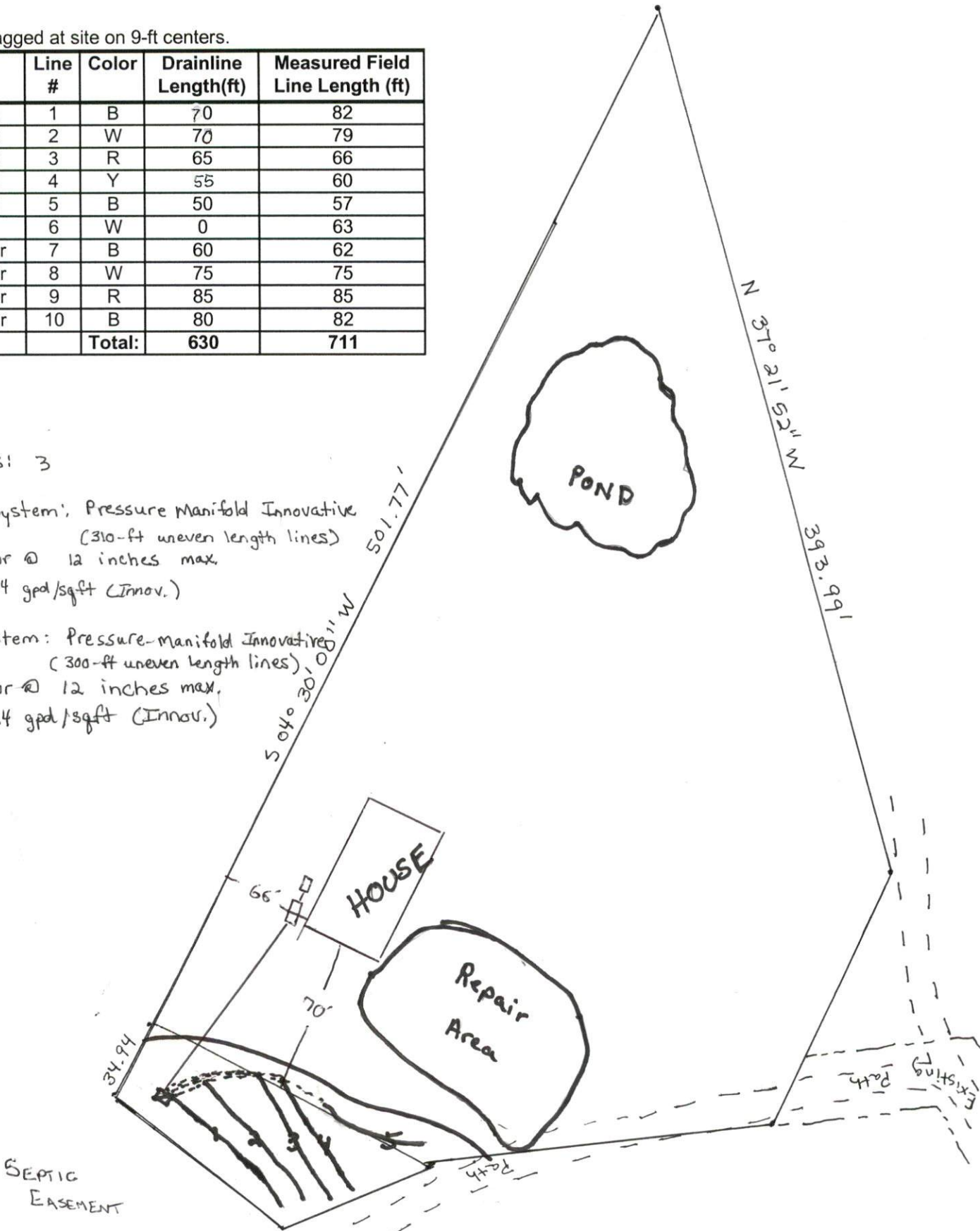
Lines flagged at site on 9-ft centers.

Initial/Repair	Line #	Color	Drainline Length(ft)	Measured Field Line Length (ft)
Initial	1	B	70	82
Initial	2	W	70	79
Initial	3	R	65	66
Initial	4	Y	55	60
Initial	5	B	50	57
N/A	6	W	0	63
Repair	7	B	60	62
Repair	8	W	75	75
Repair	9	R	85	85
Repair	10	B	80	82
Total:			630	711

Bedrooms: 3

Initial System: Pressure Manifold Innovative
 (310-ft uneven length lines)
 on contour @ 12 inches max.
 LTAR: 0.4 gpd/sqft (Innov.)

Repair System: Pressure-manifold Innovative
 (300-ft uneven length lines)
 on contour @ 12 inches max.
 LTAR: 0.4 gpd/sqft (Innov.)



Pressure Manifold Design Criteria

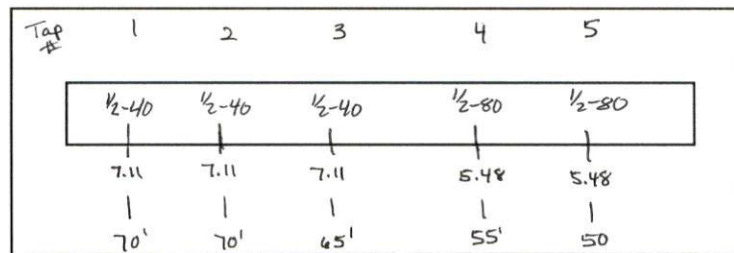
Initial System

Line Number	Line Color	Drainline Length(ft)	Tap Size/Schedule	gpm/tap	gpd/ft	LTAR (gpd/sqft)
1	B	70	1/2" sch 40	7.11	1.132	0.377
2	W	70	1/2" sch 40	7.11	1.132	0.377
3	R	65	1/2" sch 40	7.11	1.220	0.407
4	Y	55	1/2" sch 80	5.48	1.111	0.370
5	B	50	1/2" sch 80	5.48	1.222	0.407

Total Drainline= 310 Total Flow= 32.29

Pressure Head (ft)=	2
Daily Flow	360
Total Flow (gpm)=	32.29
Target LTAR (gpd/sqft)=	0.4
LTAR + 5%	0.42
Daily PRT(min)=	11.15
Dose Vol (gal)=	151.82
Dose PRT (min)=	4.70

4 Inch Schedule 80 Manifold



with Pipe
Vol at % 75