

COMMENTS: _____

<u>LANDSCAPE POSITIONS</u>	<u>GROUP</u>	<u>TEXTURES</u>	<u>.1955 LTAR</u>	<u>CONSISTENCE MOIST</u>	<u>WET</u>
R-RIDGE S-SHOULDER SLOPE L-LINEAR SLOPE FS-FOOT SLOPE N-NOSE SLOPE H-HEAD SLOPE CC-CONCLAVE SLOPE CV-CONVEX SLOPE T-TERRACE FP-FLOOD PLAN	I	S-SAND LS-LOAMY SAND	1.2 - 0.8	VFR-VERY FRIABLE FR-FRIABLE	NS-NON-STICKY SS-SLIGHTLY STICKY
	II	SL-SANDY LOAM L-LOAM	0.8 - 0.6	FI-FIRM VFI-VERY FIRM	S-STICKY VS-VERY STICKY
	III	SI-SILT- SIL-SILT LOAM CL-CLAY LOAM SCL-SANDY CLAY LOAM SICL-SILTY CLAY LOAM	0.6 - 0.3	EFI-EXTREMELY FIRM	NP-NON-PLASTIC SP-SLIGHTLY STICKY P-PLASTIC VP-VERY PLASTIC
	IV	SIC-SILTY CLAY C-CLAY SC-SANDY CLAY	0.4 - 0.1		

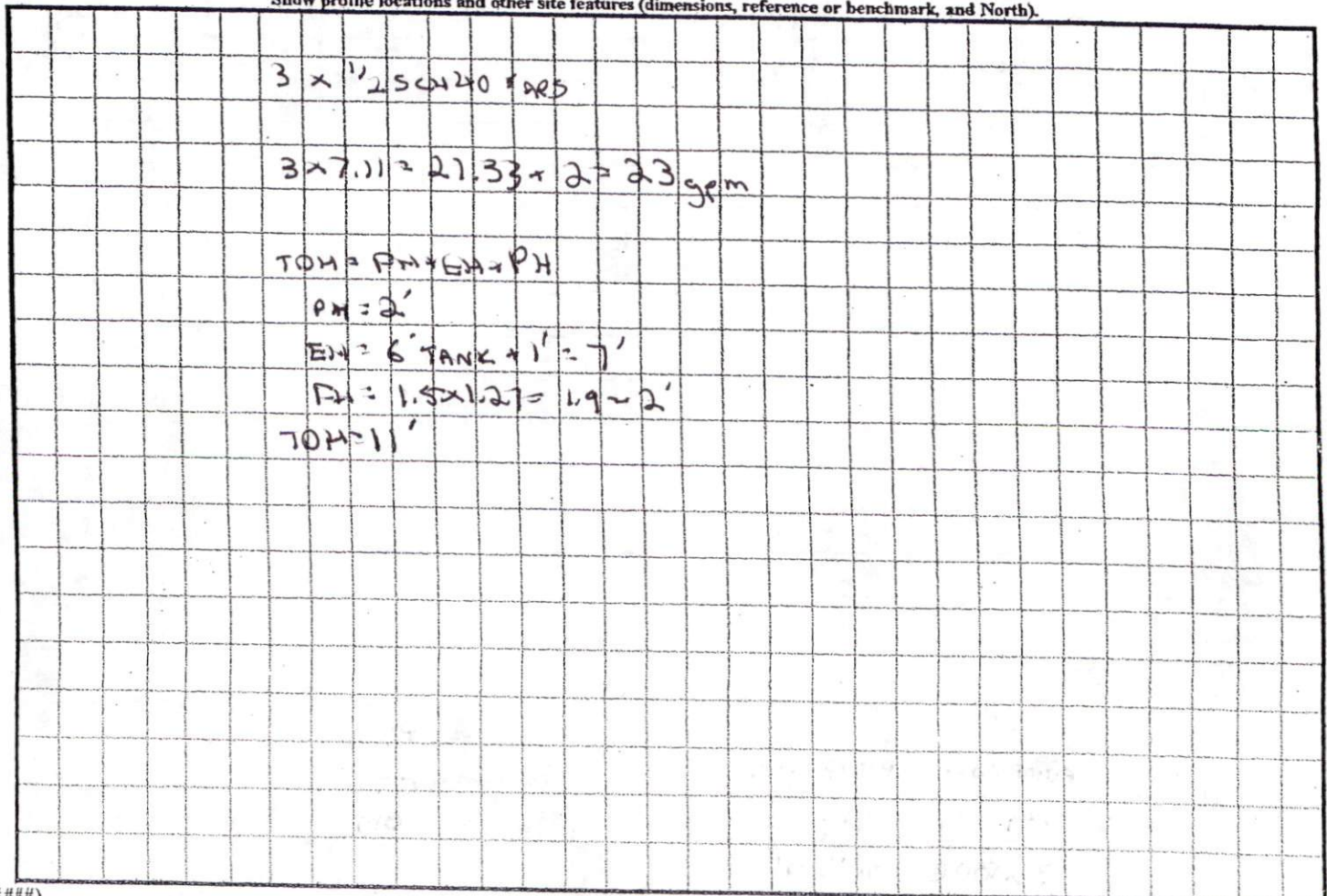
STRUCTURE

- SG-SINGLE GRAIN
- M-MASSIVE
- CR-CRUMB
- GR-GRANULAR
- SBK-SUBANGULAR BLOCKY
- ABK-ANGULAR BLOCKY
- PL-PLATY
- PR-PRISMATIC

MINERALOGY

- SLIGHTLY EXPANSIVE
- EXPANSIVE

Show profile locations and other site features (dimensions, reference or benchmark, and North).



Bound Angle & Pts. 260.13'
Leaf Edge of Path
25' Rear Minimum Setback Line

297.72'
Minimum Setback Line

492.70'

SITE PLAN APPROVAL

DISTRICT DONE USE DWMT

#BEDROOMS 3

Date 11/29/05 PK
Zoning Administrator

Debra O'Brien

①
5.08 Acres Total
- 0.10 Ac. In R/W
4.98 Acres Net

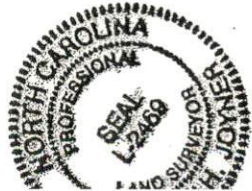
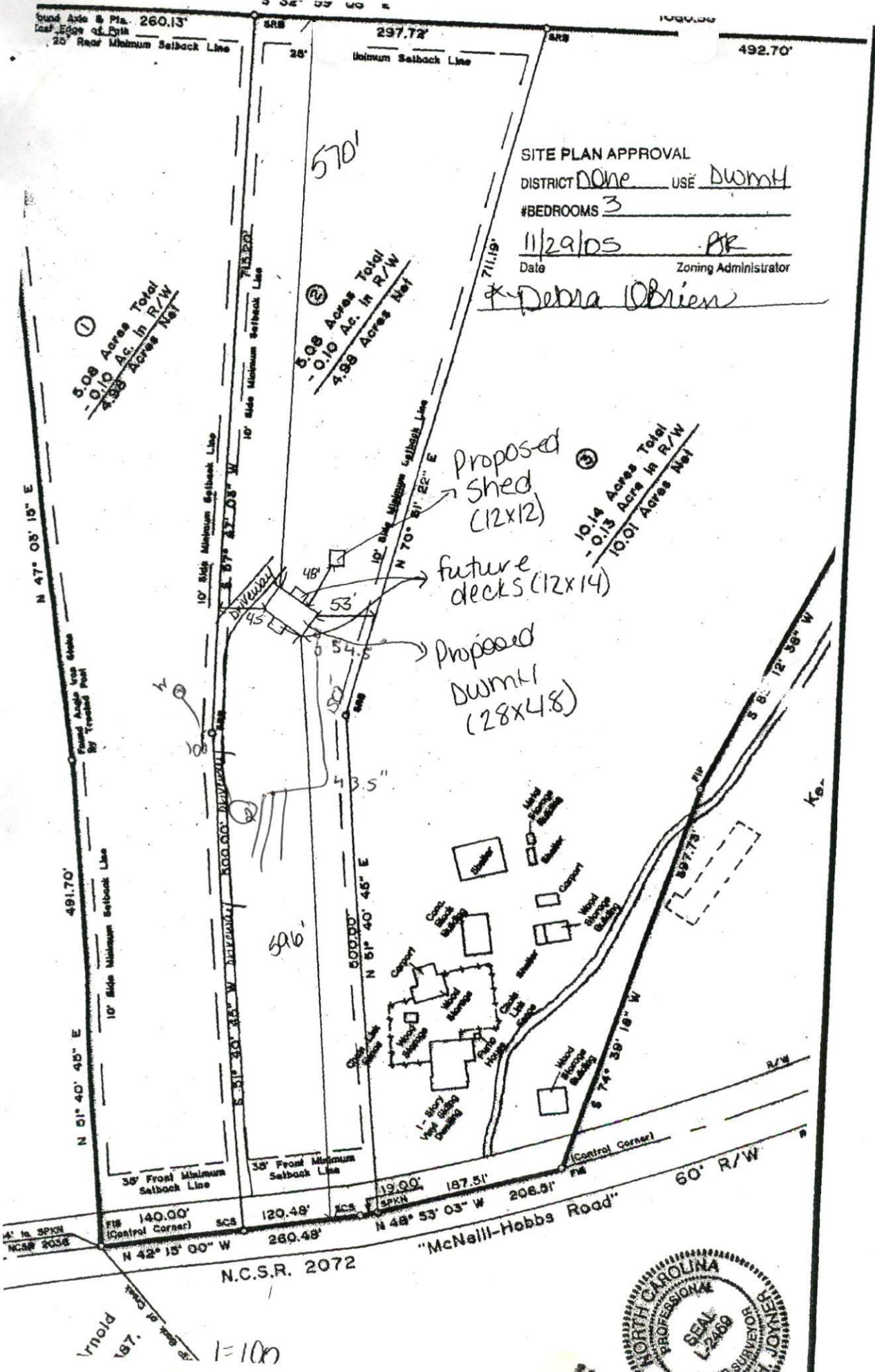
②
5.08 Acres Total
- 0.10 Ac. In R/W
4.98 Acres Net

③
10.14 Acres Total
- 0.13 Acres In R/W
10.01 Acres Net

Proposed Shed (12x12)

future decks (12x14)

Proposed DWMT (28x48)



N.C.S.R. 2072

197.
1=100'