



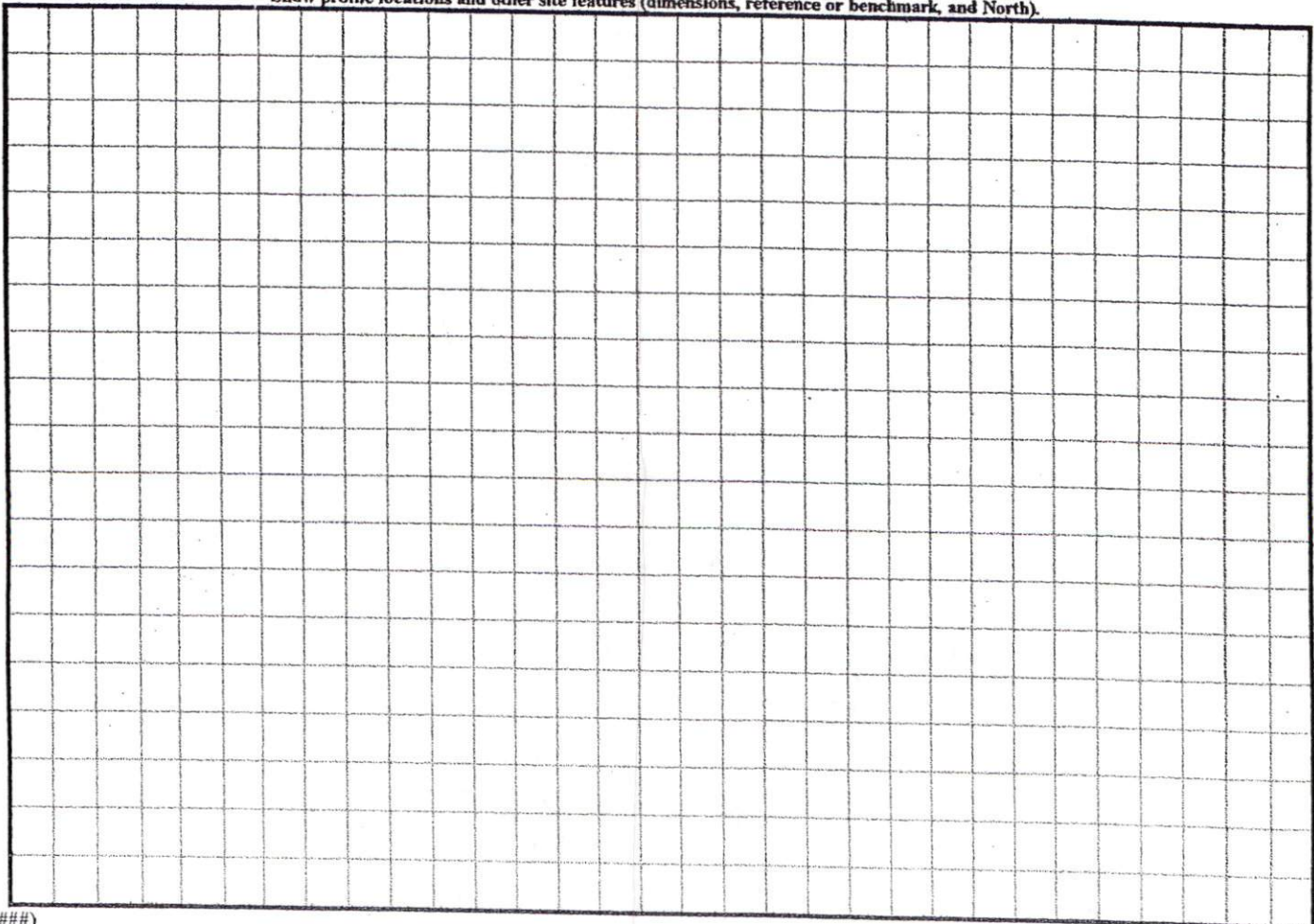
COMMENTS: \_\_\_\_\_  
 \_\_\_\_\_  
 \_\_\_\_\_

<u>LANDSCAPE POSITIONS</u>	<u>GROUP</u>	<u>TEXTURES</u>	<u>.1955 LTAR</u>	<u>CONSISTENCE MOIST</u>	<u>WET</u>
R-RIDGE	I	S-SAND	1.2 - 0.8	VFR-VERY FRIABLE FR-FRIABLE FI-FIRM VFI-VERY FIRM EFI-EXTREMELY FIRM	NS-NON-STICKY SS-SLIGHTLY STICKY S-STICKY VS-VERY STICKY NP-NON-PLASTIC SP-SLIGHTLY STICKY P-PLASTIC VP-VERY PLASTIC
S-SHOULDER SLOPE		LS-LOAMY SAND			
L-LINEAR SLOPE	II	SL-SANDY LOAM	0.8 - 0.6		
FS-FOOT SLOPE		L-LOAM			
N-NOSE SLOPE	III	SI-SILT-	0.6 - 0.3		
H-HEAD SLOPE		SIL-SILT LOAM			
CC-CONCLAVE SLOPE		CL-CLAY LOAM			
CV-CONVEX SLOPE		SCL-SANDY CLAY LOAM			
T-TERRACE		SICL-SILTY CLAY LOAM			
FP-FLOOD PLAN	IV	SIC-SILTY CLAY	0.4 - 0.1		
		C-CLAY			
		SC-SANDY CLAY			

STRUCTURE  
 SG-SINGLE GRAIN  
 M-MASSIVE  
 CR-CRUMB  
 GR-GRANULAR  
 SBK-SUBANGULAR BLOCKY  
 ABK-ANGULAR BLOCKY  
 PL-PLATY  
 PR-PRISMATIC

MINERALOGY  
 SLIGHTLY EXPANSIVE  
 EXPANSIVE

Show profile locations and other site features (dimensions, reference or benchmark, and North).



(#####)



CALLS ALONG CENTERLINE

L-1	N 77°19'57"E	99.72
L-2	N 77°16'46"E	49.83
L-3	N 78°02'42"E	35.40
L-4	N 75°10'43"E	64.56
L-5	N 73°58'00"E	49.98
L-6	N 70°23'21"E	99.96

CALLS ALONG NC HWY # 42 CENTERLINE  
COURSE BEARING DISTANCE

FOR RECORDING.  
CERTIFY  
COUNTY, CERTIFY  
*Barnett*

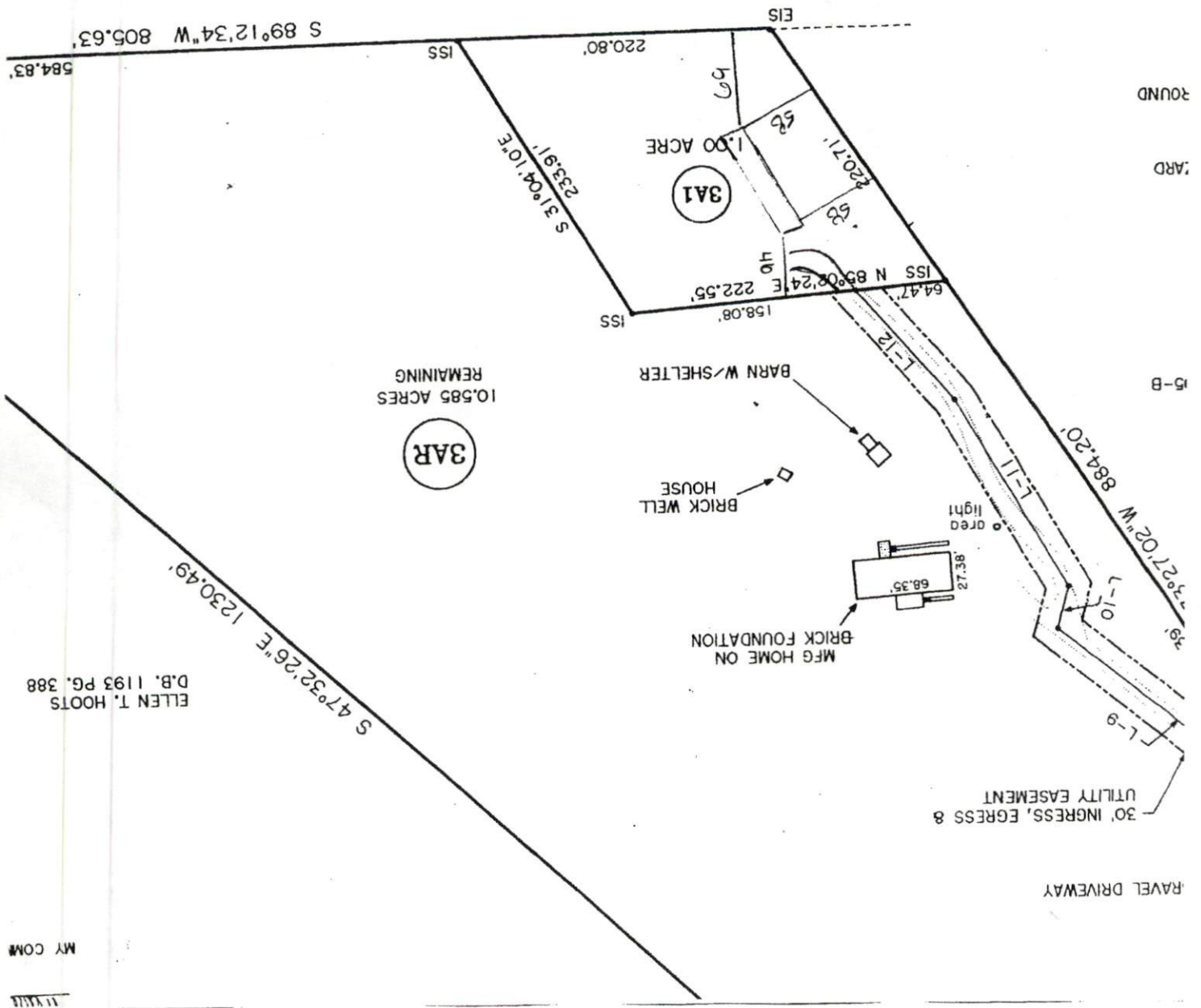
### SITE PLAN APPROVAL

DISTRICT RAZON USE SWM-H

#BEDROOMS 3

Date 12-23-03 Zoning Administrator [Signature]

JAN R. CALLIS  
BUCKHORN FARMS  
D.B. 821 PG. 463  
P.B. 18 PG. 75



ELLEN T. HOOTS  
D.B. 1193 PG. 388

h2-81  
001X7



0007  
00