

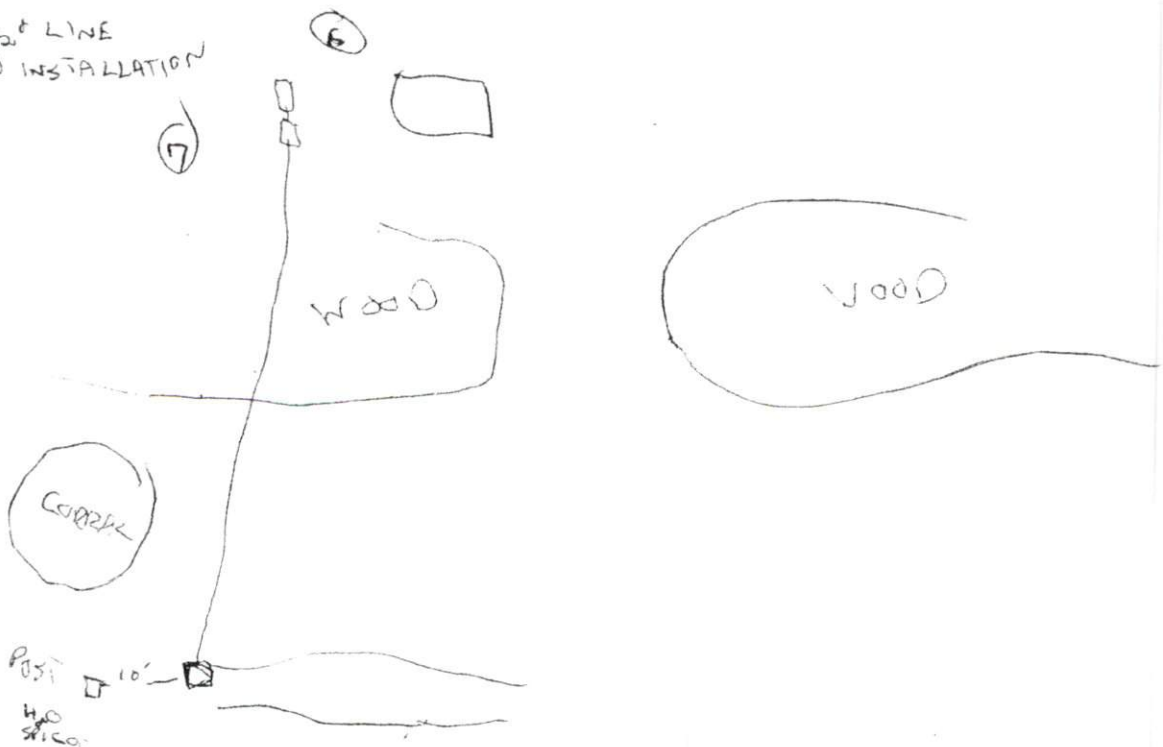
SITE/SOIL EVALUATION FOR ON-SITE WASTEWATER

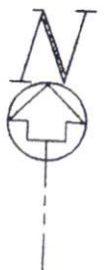
FACTORS		PROFILES												
		1	2	3	4	5	6	7	8	9	10			
LANDSCAPE POSITION	.1940													
SLOPE (%)	.1940													
HORIZON 1 DEPTH		0-25	0-16	0-30	0-26"	0-40"	0-18"							
TEXTURE GROUP	.1941(A)(1)	SC2	SC2	S	S	S	CLAYEY SAND							
CONSISTENCE	.1941													
STRUCTURE	.1941(A)(2)													
MINERALOGY	.1941(A)(3)													
HORIZON 2 DEPTH		35-38	16"		36"		18"							
TEXTURE GROUP	.1941(A)(1)	C	C		SM		C							
CONSISTENCE	.1941													
STRUCTURE	.1941(A)(2)													
MINERALOGY	.1941(A)(3)													
HORIZON 3 DEPTH							ES/EP							
TEXTURE GROUP	.1941(A)(1)													
CONSISTENCE	.1941													
STRUCTURE	.1941(A)(2)													
MINERALOGY	.1941(A)(3)													
HORIZON 4 DEPTH														
TEXTURE GROUP	.1941(A)(1)													
CONSISTENCE	.1941													
STRUCTURE	.1941(A)(2)													
MINERALOGY	.1941(A)(3)													
SOIL WETNESS	.1942	28"	16"	0"	36"		18"	5"						
RESTRICTIVE HORIZON	.1944													
SAPROLITE	.1943/1956													
CLASSIFICATION	.1948	PS	US	US	S	S	US	US						
LONG TERM ACCEPTANCE RANGE	.1955	.4			.8	.8								

2x75 @ 18" INITIAL

" REPAIR

LOCATE H₂O LINE
FOR IGR TO INSTALLATION

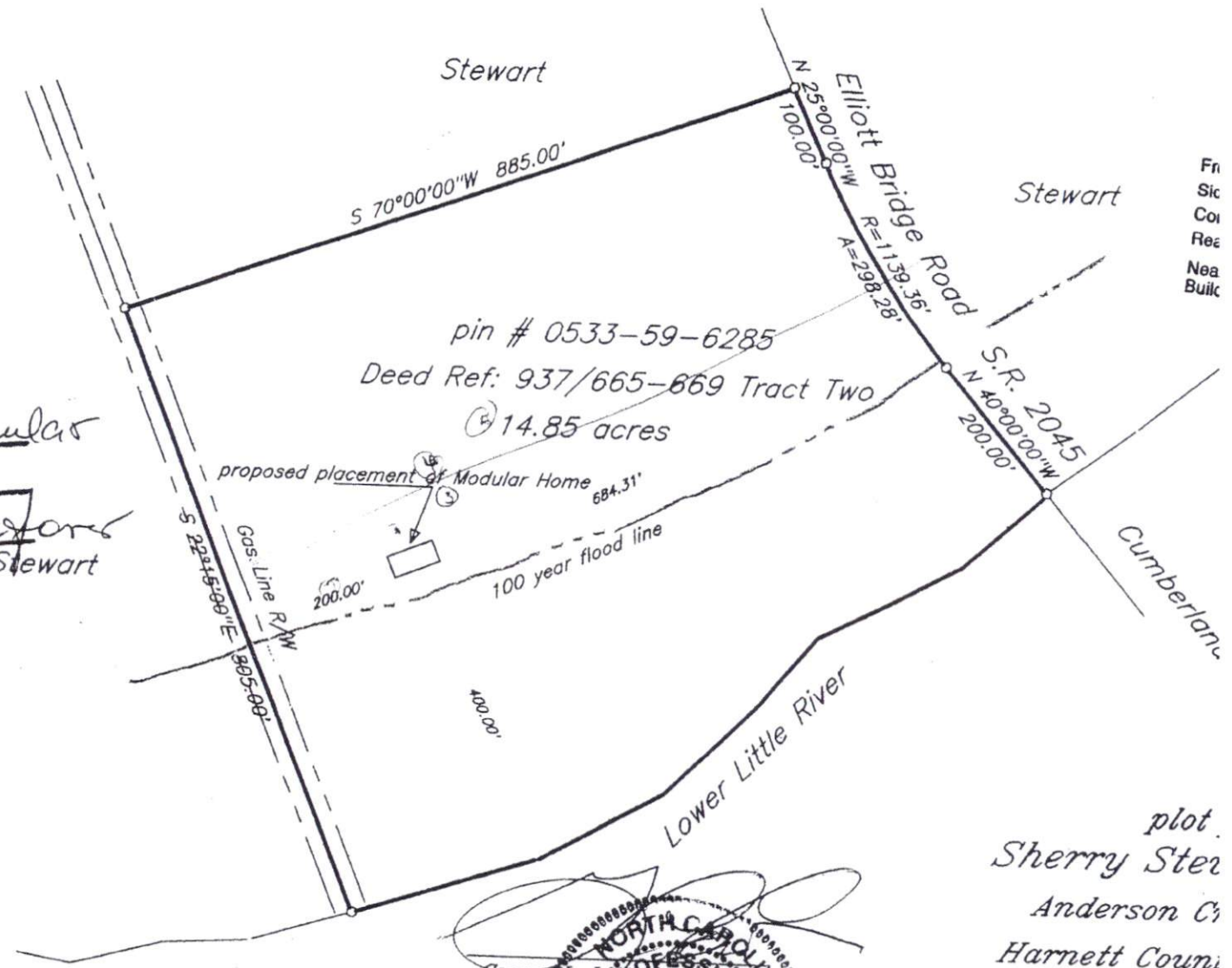




SITE PLAN APPROVAL

DISTRICT RA20R USE modular

#BEDROOMS 3
6-4-02 Thussajone
Date Zoning Administrator Stewart



Stewart
S 70°00'00"W 885.00'

Elliott Bridge Road
N 25°00'00"W 1100.00'
R=1139.36'
A=298.28'

Stewart

pin # 0533-59-6285
Deed Ref: 937/665-669 Tract Two
14.85 acres

proposed placement of Modular Home 684.31'

100 year flood line

Gas. Line R/W
S 22°15'00"E 905.00'

S.R. 2045
N 40°00'00"W 200.00'

Cumberland

Lower Little River

plot.
Sherry Steer
Anderson Co
Harnett County
Scale 1" =



George L. Lott
126 Rowland Circle Fay
Phone (919) 837-070

PRELIMINARY
NOT FOR RECORDATION,
CONVEYANCES, OR SALES.



Fr
Sic
Col
Rea
Nea
Bulk