

SITE/SOIL EVALUATION | FOR ON-SITE WASTE WATER

FACTORS		PROFILES												
		1	2	3	4	5	6	7	8	9	10			
LANDSCAPE POSITION	.1940													
SLOPE (%)	.1940													
HORIZON 1 DEPTH		0-6"	0-14"	0-14"	0-4"	0-6"								
TEXTURE GROUP	.1941(A)(1)	SL	SL	SL	SL	SL								
CONSISTENCE	.1941	VFR	FR		VFR									
STRUCTURE	.1941(A)(2)	G/CR	G/CR		G/CR									
MINERALOGY	.1941(A)(3)	NS/NP	NS/NP		NS/NP									
HORIZON 2 DEPTH		6" x	14"-30"	14"	4" x	6" x 20"								
TEXTURE GROUP	.1941(A)(1)	C	SCL	SCL	C	SCL								
CONSISTENCE	.1941	FR/FI	FR		FR/FI									
STRUCTURE	.1941(A)(2)	SBK	SBK		SBK									
MINERALOGY	.1941(A)(3)	S/P	SS/SP		S/P									
HORIZON 3 DEPTH			38"			20" x								
TEXTURE GROUP	.1941(A)(1)		C			C								
CONSISTENCE	.1941													
STRUCTURE	.1941(A)(2)													
MINERALOGY	.1941(A)(3)													
HORIZON 4 DEPTH														
TEXTURE GROUP	.1941(A)(1)													
CONSISTENCE	.1941													
STRUCTURE	.1941(A)(2)													
MINERALOGY	.1941(A)(3)													
SOIL WETNESS	.1942	3C"												
RESTRICTIVE HORIZON	.1944													
SAPROLITE	.1943/.1956													
CLASSIFICATION	.1948	PS	PS	PS	PS	PS								
LONG TERM ACCEPTANCE RANGE	.1955	.3	.4	.4	.3	.3								

NOS ENOUGH ROOM ON LOT TO KEEP ENTIRE SYSTEM OUT OF .3 SOIL

4 x 75' LINES

18-24" ON CONTOUR

LPR
REPAIR

SITE PLAN APPROVAL

DISTRICT AA-COR USE DWMT

#BEDROOMS 3

Date 29 Jan 02 G. Bell Zoning Administrator

County of Harnett

Metal Wood Review Officer of Harnett County, certify that the map or plat to which this certificate is affixed meets all statutory requirements for recording.

Metal Wood Review Officer

1-24-02 Date

** no footings for deck *
Per CSU*

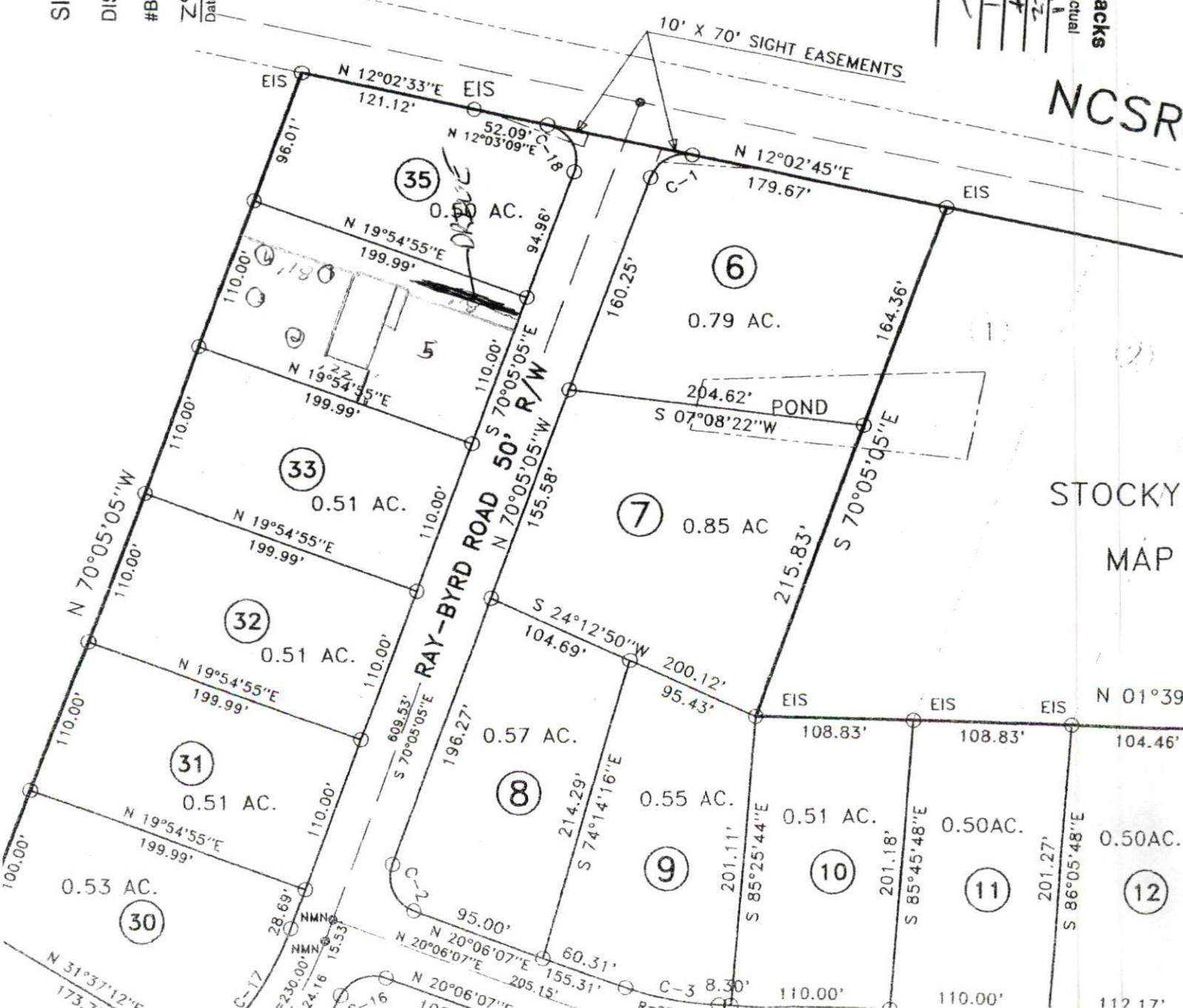
Front
Side
Corner
Rear
Nearest Building

Minimum	Actual
5	10
5	10
5	10
5	10
5	10

Required Property Line Setbacks

NCSR

STOCKY
MAP



N 01°39'

104.46'

104.46'

0.50AC.

0.50AC.

112.17'

112.17'

112.17'