



N.C. HWY 27

S 79°58'24"W

EX.PKN CL INT. OF  
NC 27 & NCSR # 1117

1=100

OVERHEAD POWER  
N 79°56'24"E 263.61'

N 79°58'27"E 625.00'  
10' X 70' SITE EASEMENTS

1467.62'

**Required Property Line Setbacks**

	Minimum	Actual
Front	35'	35'
Side	10'	30'
Corner	10'	30'
Rear	25'	38'
Nearest Building	10'	10'

MAGNETIC NORTH  
MAP NO. 99-556

P. SMITH  
DB 1273, PG 2  
PC D, SL. 150-A  
PC F, SL. 804-D

SITE PLAN APPROVAL  
DISTRICT RAZOR USE DWNH  
#BEDROOMS 4

Date 11-13-01 Danna Johnson  
Zoning Administrator

STREET NAMES HAVE BEEN  
REVIEWED AND APPROVED.

DATE 8-23-2000  
Clint Willson  
M. I. S. DEPARTMENT

284  
- 111  
171  
151  
42

①  
.79 AC.  
287.82'  
S 79°56'36"W

②  
0.79 AC.  
287.78'  
S 79°56'36"W

③  
0.79 AC.  
287.74'  
S 79°56'37"W

④  
0.79 AC.  
287.70'  
S 79°56'38"W

⑤  
0.79 AC.  
287.66'  
S 79°56'39"W

PAT-WAY LANE  
50' R/W

⑬  
0.78 AC.  
284.80'  
S 79°59'06"W

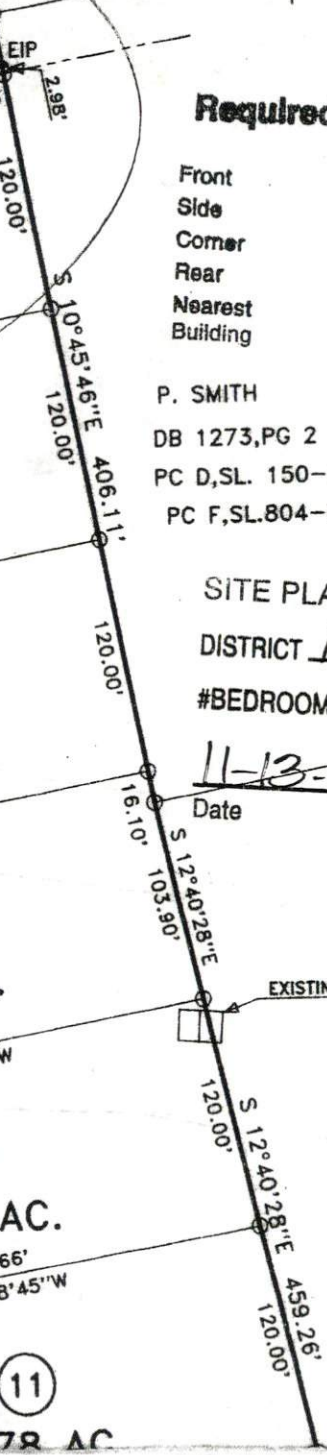
⑭  
0.78 AC.  
282.65'  
S 79°59'41"W

⑮  
0.78 AC.  
280.49'  
S 80°00'16"W

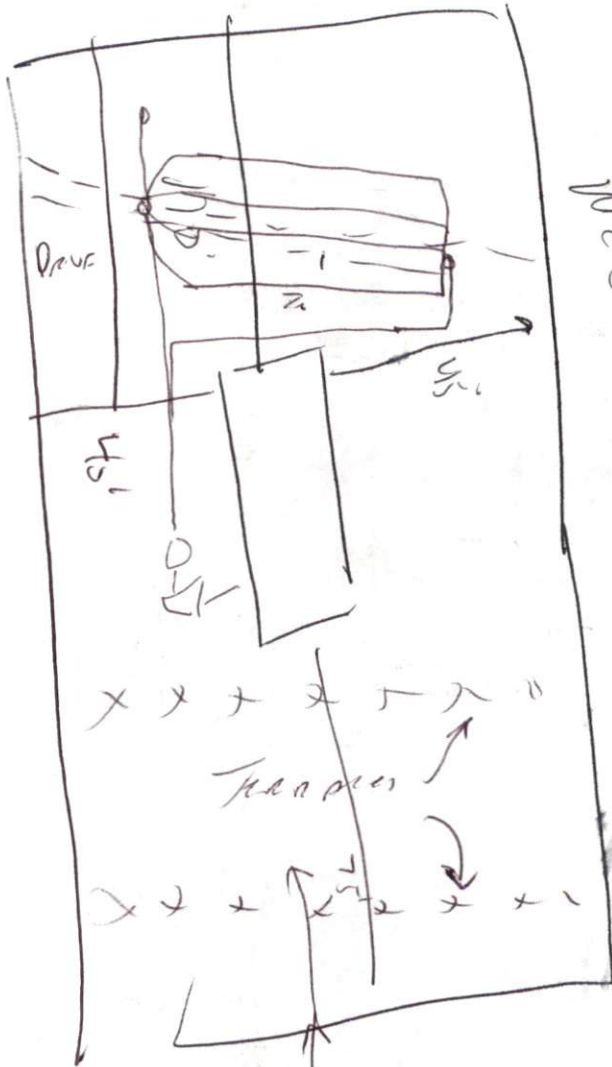
⑯  
0.77 AC.  
281.81'  
S 79°59'37"W

⑰  
0.78 AC.  
283.66'  
S 79°58'45"W

⑱  
0.78 AC.



Drive  
Miss  
Ex Along  
P/L



1/222

Unwind  
⊗