

SITE/S EVALUATION FOR ON-SI WASTEWATER

APPLICANT NAME _____

DATE _____

FACTORS		PROFILES												
		1	2	3	4	5	6	7	8	9	10			
LANDSCAPE POSITION	.1940													
SLOPE (%)	.1940													
HORIZON 1 DEPTH		0-54												
Texture Group	.1941(A)(1)	SC2												
Consistence	.1941													
Structure	.1941(A)(2)													
Mineralogy	.1941(A)(3)													
HORIZON 2 DEPTH														
Texture Group	.1941(A)(1)													
Consistence	.1941													
Structure	.1941(A)(2)													
Mineralogy	.1941(A)(3)													
HORIZON 3 DEPTH														
Texture Group	.1941(A)(1)													
Consistence	.1941													
Structure	.1941(A)(2)													
Mineralogy	.1941(A)(3)													
HORIZON 4 DEPTH														
Texture Group	.1941(A)(1)													
Consistence	.1941													
Structure	.1941(A)(2)													
Mineralogy	.1941(A)(3)													
SOIL WETNESS	.1942													
RESTRICTIVE HORIZON	.1944													
SAPROLITE	.1943/.1956													
CLASSIFICATION	.1948													
LONG TERM ACCEPTANCE RATE	.1955	0.5												

1x240
18.24

PLAN APPROVAL

DISTRICT PAZOR USE SFD

BEDROOMS 3

22 Aug 01

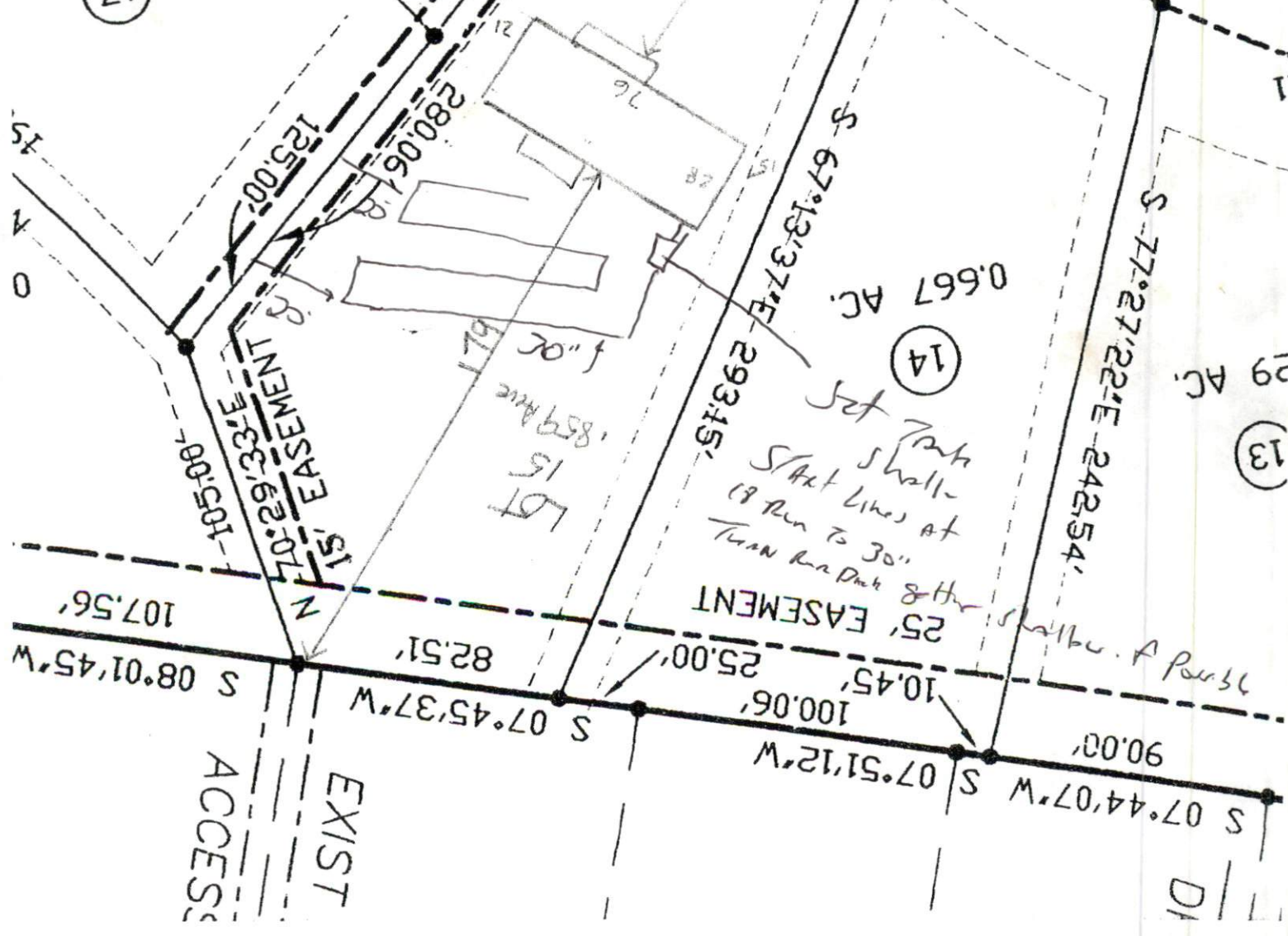
C. Bell
Zoning Administrator

Required Property Line Setbacks

	Minimum	Actual
Front	35	121
Side	10	15
Corner	20	20
Rear	52	61.17
Street	10	20

0.542 AC

(17)



0.667 AC

(14)

Set back shall start lines at 18' then to 30' Turn and back 8' then shall be a parallel

25' EASEMENT

EXIST ACCESS

90.00'

S 07°44'07" W

100.06'

10.45'

25.00'

82.51'

S 07°45'37" W

107.56'

S 08°01'45" W

108.00'

E 33°52'07" W

125.00'

125.00'

125.00'

125.00'

125.00'

125.00'

125.00'

125.00'

125.00'

125.00'

125.00'

125.00'

125.00'

125.00'

125.00'

125.00'

125.00'

125.00'

125.00'

125.00'

125.00'

125.00'

125.00'

155.06'

155.06'

155.06'

155.06'

155.06'

155.06'

155.06'

155.06'

155.06'

155.06'

155.06'

293.45'

S 67°13'37" E

67.13'

75.40'

N 46°23'00" E

46.23'

133.42'

S 46°23'00" E

46.23'

258.82'

100.00'

N 46°23'00" W

46.23'

100.00'

S 46°23'00" E

46.23'

100.00'

N 46°23'00" W

46.23'

100.00'

S 46°23'00" E

46.23'

(60)

21

12

13

14

17

29 AC

(13)

29 AC

90.00'

S 07°44'07" W

17

D

17

17

17

17

17

17

17

17

17

17

17

17

17

17

17

17

17

17

17

17

17

17

17

17

17

17

17

17

17

17

17

17

17

17

17

17

17

17

17

17

17

17

17

17

17

17

17

17

17

17