

I, DOWELL G. EAKES, PLS CERTIFY THAT THE SURVEY IS A RECOMBINATION OF EXISTING PARCELS OF LAND IN HARNETT COUNTY WHICH IS EXEMPT TO THE HARNETT COUNTY SUBDIVISION REGULATIONS.

Dowell G. Eakes
 DOWELL G. EAKES, PLS L-2607 12-12-00
 DATE

PC.B. SL. 173

SMITH 501/13

SMITH 501/13

GRAI 964

201 N67°

TOTAL AREA SURVEYED
 9.95 ACRES

1. Manufactured home must have a pitched roof.
2. Manufactured home must have underpinning.
3. Moving apparatus must be removed, underpinned, or landscaped.
4. Steps 2&3 completed w/in 60 days of C.O. issuance.

COLVIN 967/604

CHAL 604

Required Property Line Setbacks

	Minimum	Actual
Front	30	93
Side	10	100
Corner	—	—
Rear	25	770
Nearest Building	10	—

SITE PLAN APPROVAL

DISTRICT RA-20 USE SMNH
 #BEDROOMS 2
 Date 12-19-00 *Simon Brad*
 Zoning Administrator

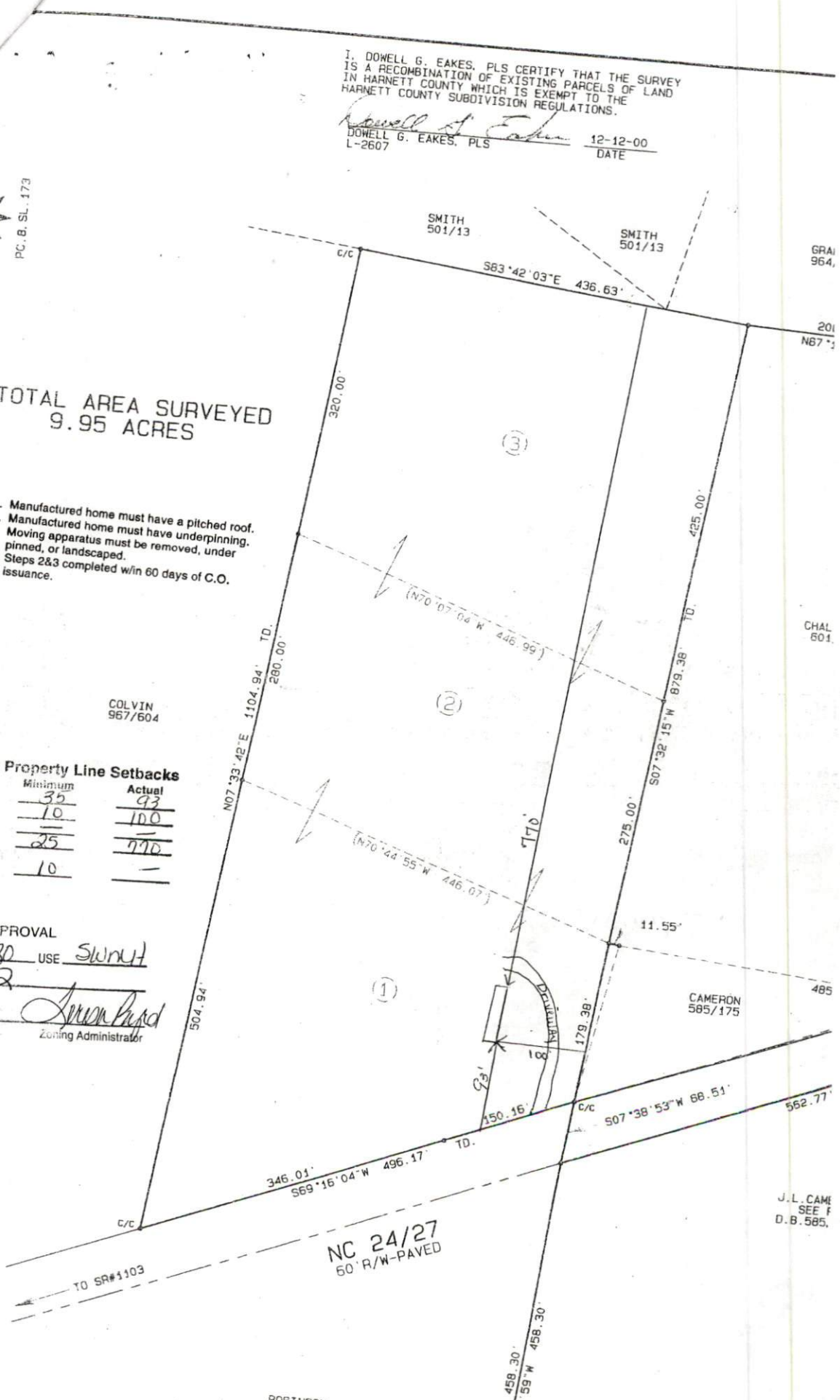
CAMERON 585/175

485

NC 24/27
 60' R/W-PAVED

J.L. CAME
 SEE F
 D.B. 585

ROBINSON 917/916



1 x HD
Start
D.H. 01
to 18"
to 30" + 60" Back

