

SITE CONSTRUCTION PLANS FOR:

# GOURD SPRINGS BAPTIST CHURCH NEW BUILDING ADDITION

4575 RAY ROAD  
HARNETT COUNTY, NORTH CAROLINA

### PROPERTY OWNER

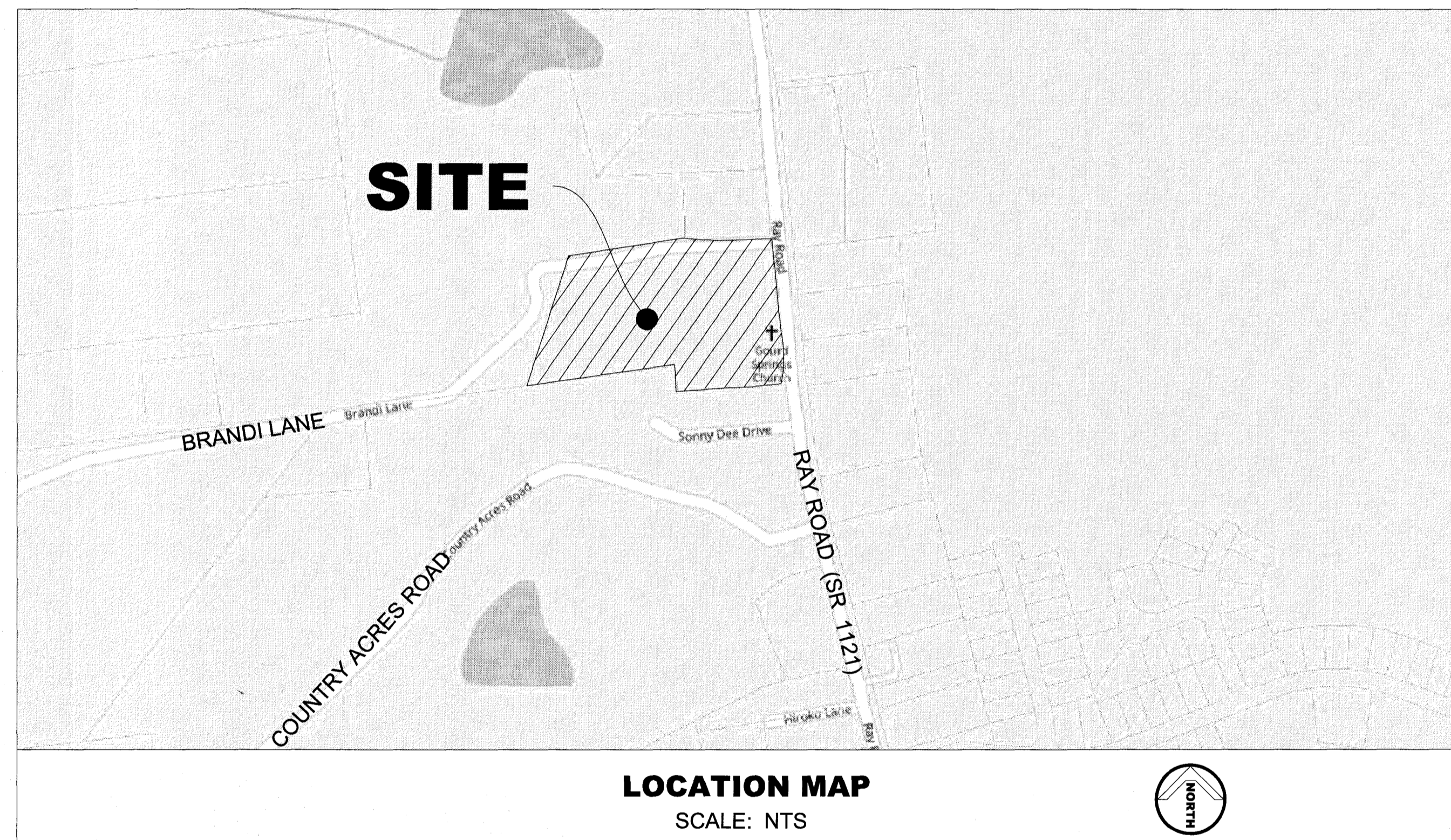
GOURD SPRINGS BAPTIST CHURCH, INC.  
4575 RAY ROAD  
SPRING LAKE, NC 28390  
PHONE: (910) 436-0276  
CONTACT: RICHARD YOCCO  
(BUILDING COMMITTEE CHAIR)

### SITE CONTRACTOR

CONSTRUCTION SYSTEMS, INC  
6205 RAEFORD ROAD  
FAYETTEVILLE, NC 28304  
PHONE: (910) 689-2000  
FAX: (910) 689-2008  
CONTACT: MS. JULIANNE HARRELSON

### SHEET INDEX

- C1 COVER SHEET
- C2 OVERALL SITE
- C3 EXISTING CONDITIONS AND DEMOLITION PLAN
- C4 SITE LAYOUT PLAN
- C5 GRADING, STORM DRAINAGE, AND EROSION CONTROL PLAN
- C6 UTILITY PLAN
- C7 CONSTRUCTION DETAILS
- C8 CONSTRUCTION DETAILS
- C9 SEPTIC SYSTEM DRAIN FIELD
- C10 SEPTIC SYSTEM DETAILS



### LEGEND OF ABBREVIATIONS

BC	BACK OF CURB	INV	INVERT
CB	CATCH BASIN	JB	JUNCTION BOX (STORM)
CO	CLEAN OUT	IPS	IRON PIN SET
CPP	CORRUGATED PLASTIC PIPE	LP	LIGHT POLE
CMP	CORRUGATED METAL PIPE	N/F	NOW OR FORMERLY
C & G	CURB & GUTTER	P.E.	PERMANENT EASEMENT
DI	DROP INLET	PVC	POLY-VINYL CHLORIDE PIPE
DIP	DUCTILE IRON PIPE	PP	POWER POLE
EG	EDGE OF GRAVEL	RCP	REINFORCED CONCRETE PIPE
EP	EDGE OF PAVEMENT	R/W	RIGHT OF WAY
EB	ELECTRICAL BOX	SS OR SAN	SANITARY SEWER
EY	ELECTRICAL VAULT	SSMH	SANITARY SEWER MANHOLE
EL	ELEVATION	TP	TELEPHONE PEDESTAL
ECM	EXISTING CONCRETE MONUMENT	T.C.E.	TEMPORARY CONSTRUCTION EASEMENT
EIP	EXISTING IRON PIN	TS	TOP OF SIDEWALK
EPK	EXISTING PK NAIL	TW	TOP OF WALL
FO	FIBER OPTIC	TF	TRANSFORMER
FOM	FIBER OPTIC MARKER	UC	UNDERGROUND COMMUNICATIONS
FOB	FIBER OPTIC BOX	VB	VALVE BOX
FH	FIRE HYDRANT	WM	WATER METER
GUY	GUY WIRE	WV	WATER VALVE
HP	HIGH POINT	WCR	WHEELCHAIR RAMP
		YI	YARD INLET

### LEGEND OF SYMBOLS AND LINES

PROPERTY CORNER	●	RIGHT OF WAY	=====
UTILITY POLE	⊙	SETBACK	-----
LIGHT POLE	⊙	BUFFER YARD	-----
TELEPHONE PEDESTAL	⊙	UTILITY EASEMENT	-----
GATE VALVE	⊙	SIGHT TRIANGLE	-----
WATER METER	⊙	CENTER LINE	-----
FIRE HYDRANT	⊙	LIMIT OF DISTURBANCE	-----
SEWER MANHOLE	⊙	UNDERGROUND ELECTRIC LINE	---UE---
SEWER CLEANOUT	⊙	OVERHEAD ELECTRIC LINE	---OHE---
CATCH BASIN	⊙	SANITARY SEWER (GRAVITY)	---SAN---
YARD INLET / DROP INLET	⊙	SANITARY SEWER (FORCEMAIN)	---FM---
STORM JUNCTION BOX / MH	⊙	STORM DRAIN PIPE	---SD---
HANDICAP	⊙	WATER LINE	---W---
SPOT ELEVATION	⊙	GAS LINE	---G---
SIGN	⊙	COMMUNICATIONS LINE	---T---
		FIBER OPTIC LINE	---FO---
		FENCE LINE	---F---
		TREE LINE	---TR---
		DRAINAGE FLOW	---DF---
		CURB AND GUTTER	---CG---
		CURB AND GUTTER (SPILL)	---CGS---
		CONCRETE PAVEMENT	---CP---
		GRAVEL SURFACE	---GS---
		ASPHALT PAVEMENT	---AP---

NOTE:  
EXISTING FEATURES ARE SHOWN SHADED.

## NOVEMBER 1, 2017

\*REVISED 12/15/2017\*

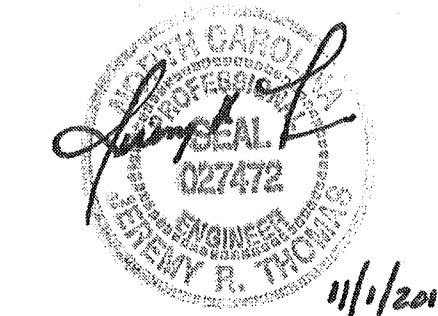
\*REVISED 12/29/2017\*

\*REVISED 1/12/2018\*

### J Thomas Engineering, Inc.

civil engineering • planning

143 Charlotte Avenue, Suite 104  
Sanford, North Carolina 27330  
(919) 777-6010 phone  
www.jthomasengineering.com  
license no. C-3389



RECEIVED

JAN 16 2018

CONSTRUCTION SYSTEMS, INC.

AGENCY REVIEW ONLY

project no. 17-020

