

NORTH CAROLINA BUILDING CODE SUMMARY - NC 2018 BUILDING CODE

NAME OF PROJECT: A SWIMMING POOL FOR YMCA OF THE SANDHILLS
PROJECT ADDRESS: 107 CARLETTA CAGLE DRIVE, CAMERON, NORTH CAROLINA 28326
PROPOSED USE: COMMERCIAL SWIMMING POOL
OWNER / CONTACT: RICKY BRITT
TELEPHONE: 910.868.1270

PROJECT SUMMARY
BUILDING DESCRIPTION: N/A
SCOPE OF WORK: SWIMMING POOL
CODE COMPLIANCE SUMMARY: COMPLIANT w/ 2012 NCSCB
ALTERNATIVE MEANS OF COMPLIANCE REQUEST: NC RULES GOVERNING SWIMMING POOLS / 15A NCAC 18A.2500

PROJECT COORDINATOR: ROBERT C. EVANS, ARCHITECT
DESIGNER FIRM: ROBERT C. EVANS, ARCHITECT
ARCHITECTURAL CIVIL: ROBERT C. EVANS, ARCHITECT
ELECTRICAL:
MECHANICAL:
SPRINKLER:
STRUCTURAL 1:
STRUCTURAL 2:
TRUSS:
OTHER:

BUILDING CODE DATA
BUILDING CODE: 2012 REHAB CODE 2012 NORTH CAROLINA STATE BUILDING CODE (NCSCB)
NEW BUILDING: NEW POOL ADDITION ALTERATION TO SHELL
EXISTING BUILDING: RENOVATION INTERIOR COMPLETION TENANT ALTERATION CHANGE OF OCCUPANCY

BUILDING DATA
CONSTRUCTION TYPE: I-A I-B I-C I-D I-E I-F I-G I-H I-I I-J I-K I-L I-M I-N I-O I-P I-Q I-R I-S I-T I-U I-V I-W I-X I-Y I-Z
SPRINKLERS: NO YES
STANDPIPE: NO YES
FIRE DISTRICT: CLASS I II III
BUILDING HEIGHT: 0 FEET 0 NUMBER OF STORES UNLIMITED PER
MEZZANINE: NO YES
HIGH RISE: NO YES

ALLOWABLE AREA
PRIMARY OCCUPANCY: ASSEMBLY A-1 A-2 A-3 A-4 A-5
SECONDARY OCCUPANCY: 402 403 404 405 406 407 408
MIXED OCCUPANCY: NON-SEPARATED MIXED OCCUPANCY (508.3)
SEPARATED MIXED OCCUPANCY (508.4)

Table with 6 columns: STORY NO., DESCRIPTION AND USE, (A) FLOOR AREA PER STORY (ACTUAL), (B) TABLE 503.3 AREA, (C) AREA FOR OPEN SPACE INCREASE 1, (D) AREA FOR SPRINKLER INCREASE 2, (E) ALLOWABLE AREA OR UNLIMITED 3, (F) MAXIMUM BUILDING AREA 4

ALLOWABLE HEIGHT - N/A
Table with 4 columns: TYPE OF CONSTRUCTION, BUILDING HEIGHT IN FEET, BUILDING HEIGHT IN STORES, ALLOWABLE HEIGHT

FIRE RESISTANCE RATINGS - N/A

Table with 7 columns: BUILDING ELEMENT, FIRE SEPARATION DISTANCE (FEET), REQ'D, RATING PROVIDED (W/ REDUCTION), DETAIL AND SHEET #, DESIGN # FOR RATED ASSEMBLY, DESIGN # FOR RATED PENETRATION, DESIGN # FOR RATED JOINTS

LIFE SAFETY SYSTEMS - N/A

EMERGENCY LIGHTING: NO YES
EXIT SIGNS: NO YES
FIRE ALARM: NO YES

EXIT REQUIREMENTS

Table with 4 columns: FLOOR, ROOM OR SPACE DESIGNATION, MINIMUM NUMBER OF EXITS REQUIRED, TRAVEL DISTANCE, ARRANGEMENT MEANS OF EGRESS

EXIT WIDTH
Table with 4 columns: USE GROUP OR SPACE DESCRIPTION, (a) AREA 1 SQ FT, (b) AREA 1 PER OCCUPANT, (c) OCCUPANT CONTENT, (d) EXIT WIDTH

PLUMBING FIXTURE REQUIREMENTS - SEE CLUBHOUSE PLANS

Table with 7 columns: OCCUPANCY, WATERCLOSETS, URINALS, LAVATORIES, SHOWERS/TUBS, DRINKING FOUNTAINS, NOTES & EXCEPTIONS

PERCENTAGE OF WALL OPENINGS CALCULATIONS - N/A

Table with 4 columns: WALL, ACTUAL SEPARATION DISTANCE SHOWN ON PLANS, PERCENTAGE OF OPENINGS ALLOWED PER TABLE 705.8, ACTUAL PERCENTAGE OF OPENING ON PLANS

WALL LEGENDS - N/A

THE FOLLOWING WALL TYPES ARE PRESENT IN THIS PROJECT (SEE WALL LEGEND ON FLOOR PLANS FOR FURTHER REFERENCE)
FIRE PARTITIONS 709
SMOKE PARTITIONS 711

DESIGN LOADS - N/A

CLASSIFICATION OF BUILDING:
LIVE LOADS:
SNOW LOADS:
WIND LOADS:
EARTHQUAKE LOADS:

SEISMIC DESIGN - CATEGORY B, C, & D:

PROVIDE THE FOLLOWING SEISMIC DESIGN PARAMETERS:
IMPORTANCE FACTOR:
SPECTRAL RESPONSE ACCELERATION:
SITE CLASSIFICATION: D

BASIC STRUCTURAL SYSTEM
BEARING WALL
BUILDING FRAME
MOMENT FRAME

SEISMIC BASE SHEAR: Vx = , Vy =
ANALYSIS PROCEDURE: SIMPLIFIED EQUIVALENT LATERAL FORCE MODAL

ARCHITECTURAL, MECHANICAL, COMPONENTS ANCHORED? YES NO
LATERAL DESIGN CONTROL: EARTHQUAKE WIND
FIELD TEST:
PRESUMPTIVE BEARING CAPACITY:
PILE SIZE, TYPE AND CAPACITY:

ACCESSIBLE PARKING - N/A

Table with 4 columns: LOT OR PARKING AREA, TOTAL # OF PARKING SPACES REQUIRED, # OF ACCESSIBLE SPACES PROVIDED, TOTAL # ACCESSIBLE PROVIDED

SPECIAL APPROVALS - N/A

(Describe special approvals from local jurisdictions, County of State Department of Health, NC Department of Insurance, International Code Council, etc.)

ELECTRICAL SUMMARY - N/A

ELECTRICAL SYSTEM AND EQUIPMENT
Method of Compliance: Prescriptive Performance Energy Cost Budget
Lighting schedule: 3 POOL LIGHTS
Motor horsepower:
Number of phases:
Minimum efficiency:
Motor type:
of poles:

SPECIAL INSPECTIONS CHAPTER 17 - N/A

SPECIAL INSPECTIONS SHALL BE CONDUCTED ON ALL PROJECTS THAT FALL WITHIN BUILDING CATEGORIES AND/OR CONTAIN ELEMENTS SUBJECT TO SPECIAL INSPECTIONS AS PRESCRIBED BY REVISED SECTION 1704.
List whom will inspect the required special inspections
Fabricator of load bearing components
Soil tests
Concrete, caissons, piles, piers, precast
Post tension concrete
Modular construction
Steel and connections, welds, bolts, anchors
Fire spray tests
Smoke control
Seismic, wind designs, Quality Assurance
Retaining wall
Masonry
Wood
Alternate Methods
EFIS:
Other (describe)
Owner or agent

ENERGY SUMMARY - N/A

Method of Compliance: Prescriptive Performance Energy Cost Budget
Roof/Ceiling Assembly (each assembly)
Description of Assembly
U-Value of total assembly
R-Value of insulation
Skylights in each assembly
U-Value of skylight
total square footage of skylights in each assembly
Exterior Walls (each assembly)
Description of assembly
U-Value of total assembly
R-Value of insulation
Openings (windows or doors with glazing)
U-Value of assembly
shading coefficient
projection factor
low e required, if applicable
Door R-Values
Walls adjacent to unconditioned space (each assembly)
Description of assembly
U-Value of total assembly
R-Value of insulation
Openings (windows or doors with glazing)
U-Value of assembly
Low e required, if applicable
Door R-Values
Walls below grade (each assembly)
Description of assembly
U-Value of total assembly
R-Value of insulation
Floors over unconditioned space (each assembly)
Description of assembly
U-Value of total assembly
R-Value of insulation
Floors slab on grade
Description of assembly
U-Value of total assembly
R-Value of insulation
Horizontal/vertical requirement
Slab Heated

MECHANICAL SUMMARY - N/A

MECHANICAL SYSTEMS, SERVICE SYSTEMS AND EQUIPMENT
Method of Compliance: Prescriptive Performance Energy Cost Budget
THERMAL ZONE
Exterior design conditions
Winter dry bulb
Summer dry bulb
Interior design conditions
Winter dry bulb
Summer dry bulb
Relative humidity
BUILDING HEATING LOAD
BUILDING COOLING LOAD
MECHANICAL SPACING CONDITIONING SYSTEM
Unitary
Description of unit
Heating efficiency
Cooling efficiency
Heat output of unit
Cooling output of unit
Boiler
Total boiler output. If oversized, state reason.
Chiller
Total chiller capacity. If oversized, state reason.
LIST EQUIPMENT EFFICIENCIES
EQUIPMENT SCHEDULES WITH MOTORS (mechanical systems)
Motor horsepower
Number of phases
Minimum efficiency
Motor type
of poles

SHELL VARIABLE FORM - N/A

Check each applicable line to match scope of work. Edit as necessary to provide clear detail of installation.
MECHANICAL:
No work Equipment set with without power Gas line
Trunk line installed with without outlets
Install complete operational system
Other
PLUMBING:
No work Install water service and sewer Install complete plumbing system
Install building drain and or water distribution main with without branches
Other INSTALL WATER HEATER, GREASE TRAP AND KITCHEN SINKS
SPRINKLER:
Install complete plumbing system
BUILDING:
Install slab partial complete Install denising walls
Install interior partitioning partial complete Install ceilings
White box (additional interior completion permits are required for Certificate of Occupancy and power)
Other INSTALL 1 WALL
ELECTRICAL:
House panel (CONNECTING TO) Service laterals to meter centers/panels located on buildings
Denise wall and ceilings only Conduit, duct, raceway, in slab
Power and lighting circuits to "J" Install light fixtures
Install Heat/AC Elevator Generator Parking lot lighting
Install complete system
Other INSTALL NEW WATER HEATER, 1 LIGHT AND OUTLETS

Please Provide Full Information on any Alternative Methods and Means incorporated into the design of this project. Provide specific details and incorporate into plan submittal any supporting documents or agreement letters.

Robert Charles Evans
2504 BRADFORD ROAD, SUITE 102, FAYETTEVILLE, NORTH CAROLINA
6530
06.11.19
CLAYTON BRITT AND SONS, INC.
3703 BRAGG BOULEVARD
FAYETTEVILLE, NORTH CAROLINA 28301
910-868-8319
RICKY BRITT
NC BUILDING LICENSE #36207
J-PARRISH
AS SHOWN
06.11.19

POOL EQUIPMENT SCHEDULE				
TAG	QTY	MANUFACTURER	MODEL #	FIXTURE DESCRIPTION
A	1	PENTAIR	EQK750/340605	SELF PRIMING 7.5 HP 350 GPM @ 65.00' ASSUMED TDH WITH INTEGRAL HAIR & LINT STRAINER (NSF) (PIPING SIZES BASED ON PUMP CURVE MAX FLOW RATE)
B	1	PENTAIR	AD075-4603-N12	460V 3Ø VARIABLE FREQUENCY DRIVE UNIT FOR POOL CIRCULATION PUMP WITH INTERNAL FUSED DISCONNECT
C	1	PENTAIR	THS SERIES 4272	72" X 42" HORIZONTAL SAND FILTER (19.7 SQ/FT FILTER SURFACE AREA - 394 GPM MAX. - FILTER RATE @ 20 GPM / SQ/FT FILTER SURFACE AREA)
D	1	PROMINENT	DCM 51 SERIES #510	CHEMICAL AUTOMATION SYSTEM
DR	2	AQUASTAR	P18101	MAIN DRAIN SUMP ASSEMBLY WITH HYDRO STATIC RELIEF VALVE; 18" X 18" (160.8 SQ./IN. INTAKE OPENING EACH) ASME/ANSI-A112.19.8 - 2007, VGB COMPLIANT ANSI/APSP 16-2011 AND NSF 50-2008, COMPLIANT 160.8 SQ. IN. OPEN AREA; 740 GPM @ 1.5 FPS
E	2			MINIMUM 30 GALLON SODIUM HYPOCHLORITE PLASTIC DRUM BY SUPPLIER
F	2			CO2 TANK PROVIDED BY AIRGAS CONTRACT
G	1	BW INDUSTRIES	F30400P	IN-LINE FLOW METER - 4" TOP MOUNT; 125-500 GPM
H	1			FLOOR DRAIN BY OTHERS
HB	2			3/4" HOSE BIB WITH VACUUM BREAKER - LOCATE AS SHOWN IN EQUIPMENT ROOM & DECKING PLAN
HR	1	S.R. SMITH	3HR-5	HANDRAIL - 6" STAINLESS STEEL 3-BEND WITH 2 BRONZE ANCHOR SOCKETS (AS-100B) & 2 ESCUTHEONS (EP-100F)
LD	6	S.R. SMITH	F4H-100	FIGURE "4" HANDRAIL - 2-6" STAINLESS STEEL 4-BEND WITH 2 BRONZE ANCHOR SOCKETS (AS-100B) & 2 ESCUTHEONS (EP-100F)
	3	S.R. SMITH	62-209-4002	INWALL LADDER TREADS
R	2	RAYPAK	408	400,000 BTU/HR PROPANE FIRED POOL WATER HEATER; ASME CERTIFIED
RF	8	PENTAIR	08417-0000	FLOOR RETURN INLET - 1-1/2" INLET FIXTURES WITH ADJUSTABLE NOZZLES
RW	10	HAYWARD	SP-1419C	WALL RETURN INLET - 1-1/2" EYEBALL INLET FIXTURES WITH ADJUSTABLE NOZZLES (ALL EYEBALL FITTINGS TO BE SET AT APPROX. 10" WATER DEPTH)
SK	8	PENTAIR	50-6370	SKIMMER ASSEMBLY; NSF APPROVED
UL	3	PENTAIR	601307	UNDERWATER LED POOL LIGHT - 500 WATT EQUIVALENT, UL LISTED, 12 VOLT, GFI; (WHITE LIGHT) TO INCLUDE TRANSFORMER
W	1	WATTS	009RPZ	1-1/4" BACKFLOW PREVENTER (BY OTHERS)
VP	2	CMP	25505-000-000	VGB COMPLIANT 2" POOL VACUUM PORT TO INCLUDE CMP "VAC LOCK" #25505-000-000
WL	1	PENTAIR	T40-FW	1" WATER LEVEL CONTROLLER - AUTOMATIC POOL WATER FILL AND WATER LEVEL CONTROLLER
SIGN	2	RAINBOW	#R234100 (NC)	POOL RULES SIGN
SIGN	4	RAINBOW	#R230600	NO DIVING SIGN
SIGN	2	RAINBOW	#R235100	NO LIFE GUARD SIGN
SIGN	2	NASSCO	#33631014115	PLEASE SHOWER BEFORE ENTERING POOL
SAFETY	2			LIFE SAVING HOOK: 16' LONG POLE WITH BODY HOOK SECURELY ATTACHED (POLE TO BE NON-TELESCOPING, NON-ADJUSTABLE AND NON-COLLAPSIBLE LIFE RING: 20" DIA COAST GUARD APPROVED LIFE RING WITH 3/4" DIA THROW ROPE ATTACHED, 50' MAX LENGTH, OR 1-1/2 TIMES THE MAXIMUM WIDTH OF POOL
	2			DPD CHLORINE AND PH TEST KIT, 18" WALL BRUSH, LEAF SKIMMER NET, 9" SS ALGAE BRUSH, 8" TO 16" LONG TELESCOPING POLE SPARE PUMP STRAINER BASKET, 40' (MIN) X 1-1/2" DIA. VACUUM HOSE, 14" VACUUM HEAD
MAINT.				

POOL DATA	
POOL AREA (75'-0" x 30'-0", 4'-0" TO 5'-0" DEEP)	2,274 SQ/FT
POOL PERIMETER	218 LINEAR FEET
POOL VOLUME	77,328 GALLONS
MINIMUM FILTRATION CYCLE (6.0 HOURS)	216 GPM
DESIGN FILTRATION AREA (3.68 HOURS)	350 GPM
MINIMUM FILTER AREA (9.20 GPM/SF SURFACE AREA)	10,800 SF
DESIGN FILTER AREA (17.76 GPM/SF SURFACE AREA)	19,700 SF
COMBINED POOL AND DECK AREA	4,482 SQ/FT
NET DECK AREA	2,208 SQ/FT
POOL OCCUPANCY LIMIT	151 PERSONS
UP POOL LIGHTING (0.5 WATTS /SF REQUIRED)	1,137 WATTS
UP POOL LIGHTING PROVIDED	1,500 WATTS
CHEMICAL STORAGE (28.00 SF MINIMUM REQUIRED)	172 SF PROVIDED

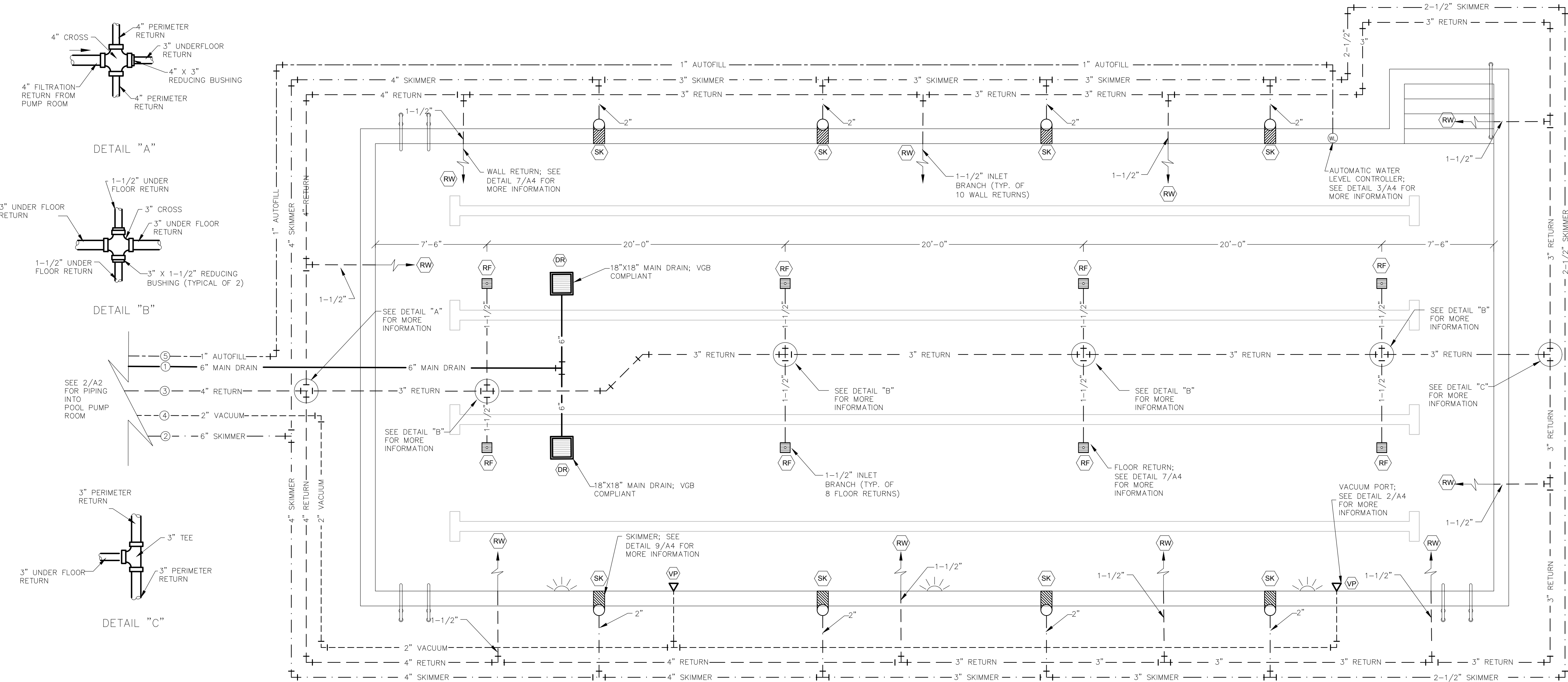
NIGHT SWIMMING NOT ALLOWED

PIPING KEY			
LINE	SYMBOL	DESCRIPTION	SIZE
①	—	POOL MAIN DRAIN LINE	6"
②	---	SKIMMER LINE	6", 4", 3", 2-1/2", 2"
③	- - - - -	FILTER RETURN LINE	4", 3", 1-1/2"
④	-----	POOL VACUUM LINE	2"
⑤	-----	AUTO POOL FILL LINE	1"

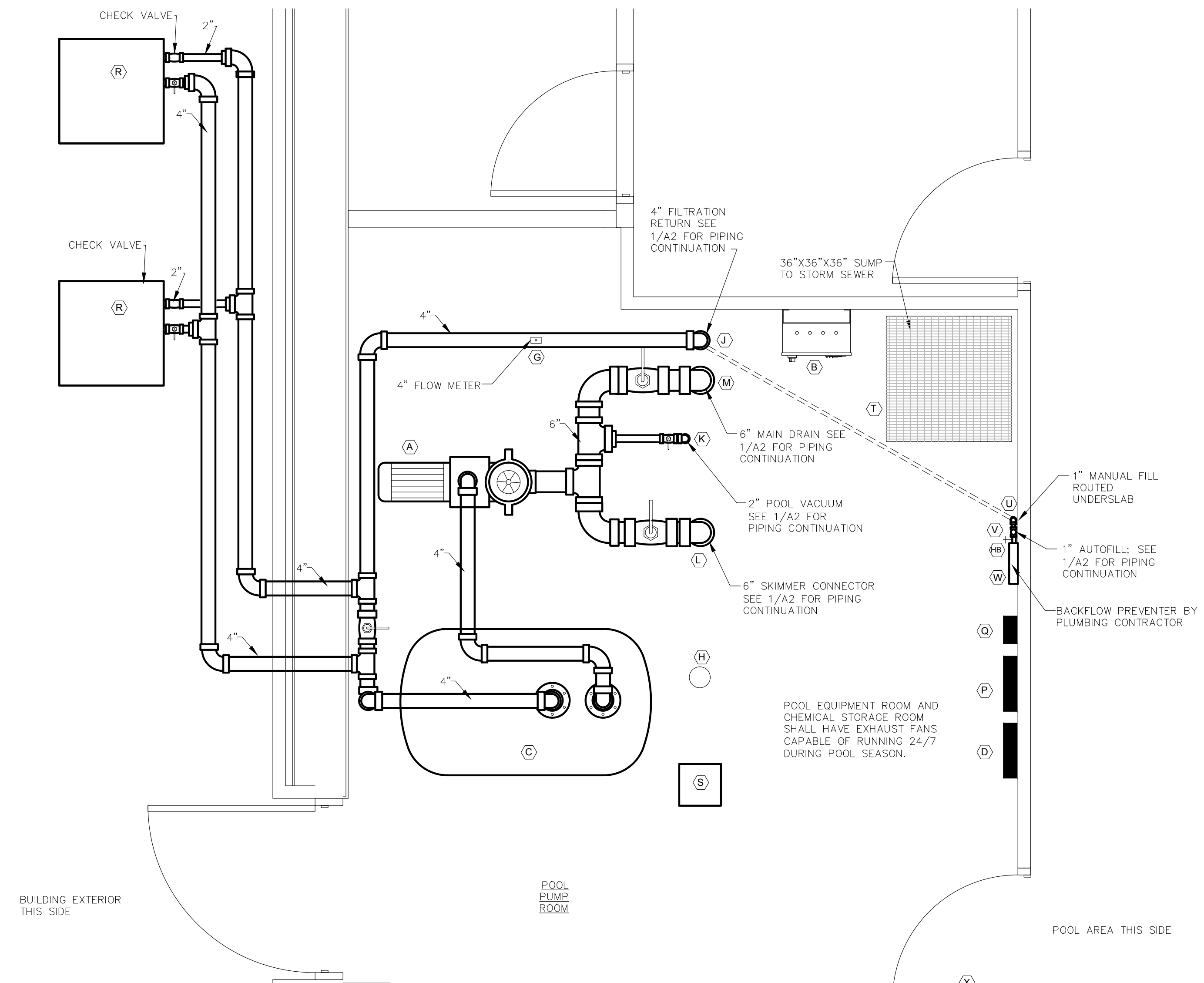
1. ALL PIPING TO BE SCHEDULE 40 PVC.

EQUIPMENT ROOM KEY	
TAG	DESCRIPTION
A	7.5 HP PENTAIR EQ SERIES CIRCULATION PUMP
B	PUMP VFD CONTROLLER
C	72" X 42" HORIZONTAL SAND FILTER
D	CHEMICAL AUTOMATION SYSTEM
E	30 GALLON SODIUM HYPOCHLORITE TANK
F	CO2 TANK
G	4" FLOW METER
H	2" FLOOR DRAIN TO SANITARY SEWER
HB	3/4" HOSE BIB BY GENERAL CONTRACTOR
J	4" RETURN
K	2" VACUUM WITH PVC BALL VALVE
L	6" SKIMMER WITH PVC BUTTERFLY VALVE
M	6" MAIN DRAIN
N	ELECTRICAL PANELS
P	CO2 SOLENOID/CONTROLLER INTERFACE
Q	SODIUM HYPOCHLORITE PUMP
R	400,000 BTU/HR GAS FIRED POOL WATER HEATER
S	POWER EXHAUST VENTILATORS (2)
T	36"x36"x36" BACKWASH SUMP WITH 6" OUTFALL PIPE TO SANITARY SEWER
U	1" MANUAL POOL FILL CONNECT TO POOL RETURN
V	1" AUTO FILL LINE (DOMESTIC WATER SUPPLY BY G.C.)
W	1-1/4" DOUBLE CHECK VALVE BACKFLOW PREVENTER BY G.C.
X	LOUVRES IN DOORS 12" X 12" +/-, SET NEAR BOTTOM OF DOORS.

- EQUIPMENT/CHEMICAL STORAGE ROOM NOTES:**
- THE EQUIPMENT / CHEMICAL STORAGE ROOM CEILING HEIGHT SHALL BE 8' MINIMUM, & THE LIGHTING FOR EACH ROOM SHALL BE 100 WATTS MINIMUM.
 - THE POWER VENTILATORS SHALL DISCHARGE THROUGH THE BUILDING WALL & BE DIRECTED AWAY FROM THE POOL AREA. EACH VENTILATOR SHALL OPERATE CONTINUOUSLY.
 - A SUMP FOR FILTER BACKWASH SHALL BE LOCATED AS SHOWN & INSTALLED FLUSH WITH THE EQUIPMENT ROOM FLOOR. THE SUMP SHALL DISCHARGE TO THE APPROVED MUNICIPAL STORM SEWER SYSTEM BY WAY OF THE COMMUNITY BUILDING PLUMBING.
 - THE OWNER / GENERAL CONTRACTOR SHALL FURNISH THE BACKFLOW PREVENTION DEVICE FOR THE POOL FILL LINE. THE POOL FILL WATER SHALL BE FROM THE APPROVED MUNICIPAL WATER SYSTEM.
 - THE POOL OPERATIONAL PROCEDURE SHALL BE POSTED ON THE EQUIPMENT ROOM WALL.
 - BOTH THE EQUIPMENT & CHEMICAL STORAGE ROOM ENTRY DOORS SHALL BE EITHER STEEL OR WOOD, #12" SQUARE, SCREENED LOUVER, FOR VENTILATION AND SUPPLY OPENING FOR AIR EXCHANGE.
 - PROVIDE SHELVING FOR DRY STORAGE OF POOL CHEMICALS PER ISA 904.18A.25.4.



POOL EQUIPMENT SCHEDULE				
TAG	QTY	MANUFACTURER	MODEL #	FIXTURE DESCRIPTION
A	1	PENTAIR	EOK750 /340605	SELF PRIMING 7.5 HP 350 GPM @ 65.00' ASSUMED TDH WITH INTEGRAL HAIR & LINT STRAINER (NSF) (PIPING SIZES BASED ON PUMP CURVE MAX FLOW RATE)
B	1	PENTAIR	AD075-4603-N12	460V 3Ø, VARIABLE FREQUENCY DRIVE UNIT FOR POOL CIRCULATION PUMP WITH INTERNAL FUSED DISCONNECT
C	1	PENTAIR	THS SERIES 4272	72" X 42" HORIZONTAL SAND FILTER (19.7 SQ/FT FILTER SURFACE AREA - 394 GPM MAX. - FILTER RATE @ 20 GPM / SQ. FT FILTER SURFACE AREA)
D	1	PROMINENT	DCM 51 SERIES #510	CHEMICAL AUTOMATION SYSTEM
DR	2	AQUASTAR	P18101	MAIN DRAIN SUMP ASSEMBLY WITH HYDRO STATIC RELIEF VALVE, 18" X 18" (160.8 SQ. IN. INTAKE OPENING EACH) ASME/ANSI: A112.19.8 - 2007, VGB COMPLIANT ANSI/APSP-16-2011 AND NSF-50-2008, COMPLIANT 160.8 SQ. IN. OPEN AREA; 740 GPM @ 1.5 FPS
E	2			MINIMUM 30 GALLON SODIUM HYPOCHLORITE PLASTIC DRUM BY SUPPLIER
F	2			CO2 TANK PROVIDED BY AIRGAS CONTRACT
G	1	B/W INDUSTRIES	F30400P	IN-LINE FLOW METER - 4" TOP MOUNT; 125-500 GPM
H	1			FLOOR DRAIN BY OTHERS
HB	2			3/4" HOSE BIB WITH VACUUM BREAKER - LOCATE AS SHOWN IN EQUIPMENT ROOM & DECKING PLAN
HR	1	S.R. SMITH	3HR-5	HANDRAIL- 5" STAINLESS STEEL 3-BEND WITH 2 BRONZE ANCHOR SOCKETS (AS-100B) & 2 ESCUTHEONS (EP-100F)
LD	6	S.R. SMITH	F4H-100	FIGURE "4" HANDRAIL- 2"-6" STAINLESS STEEL 4-BEND WITH 2 BRONZE ANCHOR SOCKETS (AS-100B) & 2 ESCUTHEONS (EP-100F)
	3	S.R. SMITH	62-209-4002	INWALL LADDER TREADS
R	2	RAYPAK	408	400,000 BTU/H PROPANE FIRED POOL WATER HEATER; ASME CERTIFIED
RF	8	PENTAIR	08417-0000	FLOOR RETURN INLET - 1-1/2" INLET FIXTURES WITH ADJUSTABLE NOZZLES
RW	10	HAYWARD	SP-1419C	WALL RETURN INLET -1-1/2" EYEBALL INLET FIXTURES WITH ADJUSTABLE NOZZLES (ALL EYEBALL FITTINGS TO BE SET AT APPROX. 10" WATER DEPTH)
SK	8	PENTAIR	50-6370	SKIMMER ASSEMBLY; NSF APPROVED
UL	3	PENTAIR	601307	UNDERWATER LED POOL LIGHT - 500 WATT EQUIVALENT, UL LISTED, 12 VOLT, GFI; (WHITE LIGHT) TO INCLUDE TRANSFORMER
W	1	WATTS	008RPZ	1-1/4" BACKFLOW PREVENTER (BY OTHERS)
VP	2	CMP	25505-000-000	VGB COMPLIANT 2" POOL VACUUM PORT TO INCLUDE CMP "VAC LOCK" #25505-000-000
WL	1	PENTAIR	T40-FW	1" WATER LEVEL CONTROLLER - AUTOMATIC POOL WATER FILL AND WATER LEVEL CONTROLLER
SIGN	2	RAINBOW	#R234100 (NC)	POOL RULES SIGN
SIGN	4	RAINBOW	#R230600	NO DIVING SIGN
SIGN	2	RAINBOW	#R235100	NO LIFEGUARD SIGN
SIGN	3	NASSCO	#33631014115	PLEASE SHOWER BEFORE ENTERING POOL
SAFETY	2			LIFE SAVING HOOK: 16' LONG POLE WITH BODY HOOK SECURELY ATTACHED (POLE TO BE NON-TELESCOPING, NON-ADJUSTABLE AND NON-COLLAPSIBLE)
				LIFE RING: 20" DIA COAST GUARD APPROVED LIFE RING WITH 3/4" DIA THROW ROPE ATTACHED, 50' MAX LENGTH, OR 1-1/2" TIMES THE MAXIMUM WIDTH OF POOL
MAINT				DPD CHLORINE AND PH TEST KIT, 18" WALL BRUSH, LEAF SKIMMER NET, 9" SS ALGAE BRUSH, 8' TO 16' LONG TELESCOPING POLE



POOL DATA	
POOL AREA (75'-0" x 30'-0", 4'-0" TO 5'-0" DEEP)	2,274 SQ/FT
POOL PERIMETER	218 LINEAR FEET
POOL VOLUME	77,328 GALLONS
MINIMUM FILTRATION CYCLE (6.0 HOURS)	216 GPM
DESIGN FILTRATION CYCLE (3.68 HOURS)	350 GPM
MINIMUM FILTER AREA (@ 20 GPM/SF SURFACE AREA)	10.80 SF
DESIGN FILTER AREA (@ 17.76 GPM/SF SURFACE AREA)	19.70 SF
COMBINED POOL AND DECK AREA	4,482 SQ/FT
NET DECK AREA	2,208 SQ/FT
POOL OCCUPANCY LIMIT	151 PERSONS
LOW POOL LIGHTING (0.5 WATTS /SF REQUIRED)	1137 WATTS
LOW POOL LIGHTING PROVIDED	1500 WATTS
CHEMICAL STORAGE (28.00 SF MINIMUM REQUIRED)	172 SF PROVIDED

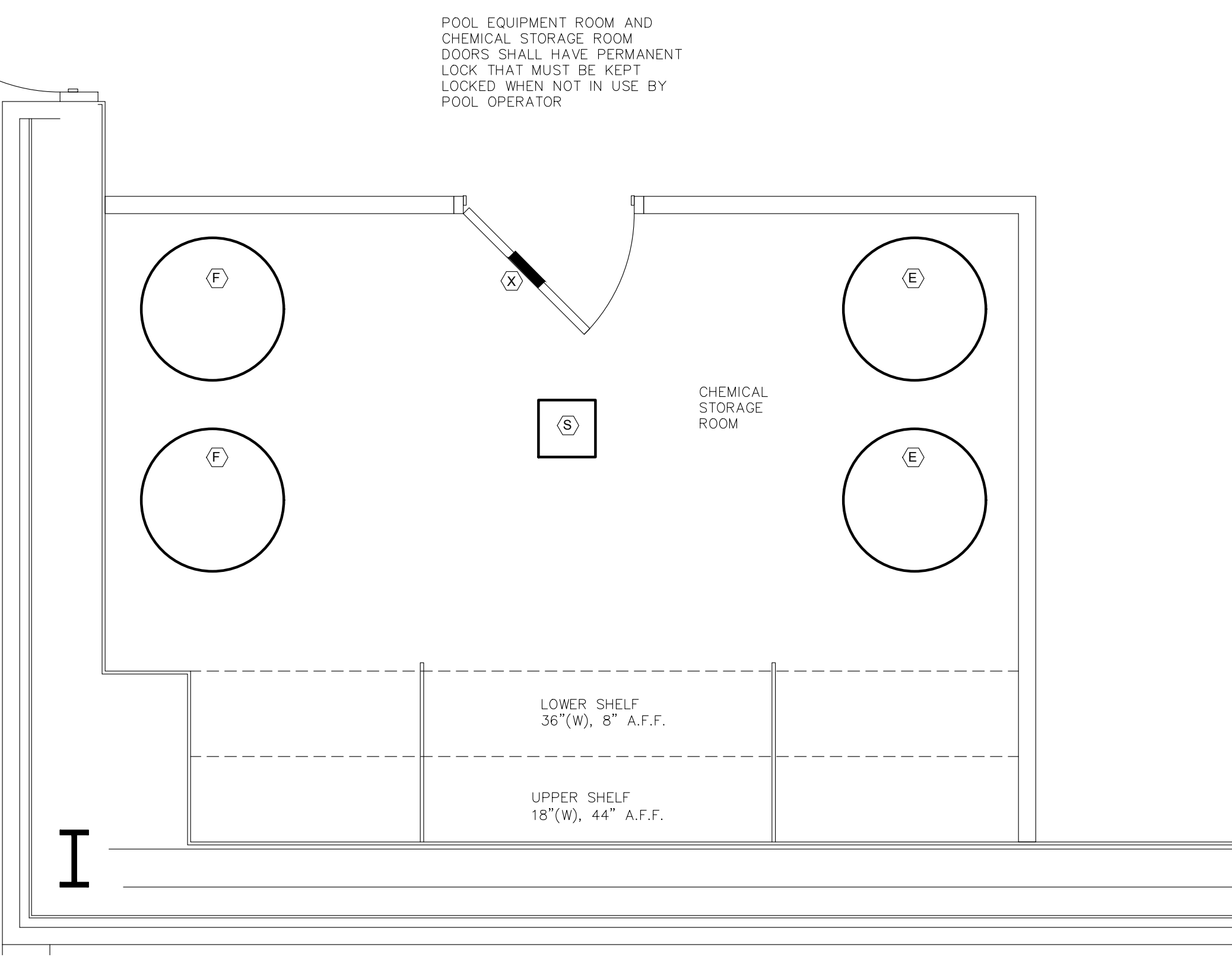
PIPING KEY			
LINE	SYMBOL	DESCRIPTION	SIZE
①	—————	POOL MAIN DRAIN LINE	6"
②	- - - - -	SKIMMER LINE	6", 4", 3", 2-1/2", 2"
③	-----	FILTER RETURN LINE	4", 3", 1-1/2"
④	-----	POOL VACUUM LINE	2"
⑤	-----	AUTO POOL FILL LINE	1"

1. ALL PIPING TO BE SCHEDULE 40 PVC.

EQUIPMENT ROOM KEY	
TAG	DESCRIPTION
A	7.5 HP PENTAIR EQ SERIES CIRCULATION PUMP
B	PUMP VFD CONTROLLER
C	72" X 42" HORIZONTAL SAND FILTER
D	CHEMICAL AUTOMATION SYSTEM
E	30 GALLON SODIUM HYPOCHLORITE TANK
F	CO2 TANK
G	4" FLOW METER
H	2" FLOOR DRAIN TO SANITARY SEWER
HB	3/4" HOSE BIB BY GENERAL CONTRACTOR
J	4" RETURN
K	2" VACUUM WITH PVC BALL VALVE
L	6" SKIMMER WITH PVC BUTTERFLY VALVE
M	6" MAIN DRAIN
N	ELECTRICAL PANELS
P	CO2 SOLENOID/CONTROLLER INTERFACE
Q	SODIUM HYPOCHLORITE PUMP
R	400,000 BTU/HR GAS FIRED POOL WATER HEATER
S	POWER EXHAUST VENTILATORS (2)
T	36"x36"x36" BACKWASH SUMP WITH 6" OUTFALL PIPE TO SANITARY SEWER
U	1" MANUAL POOL FILL CONNECT TO POOL RETURN
V	1" AUTO FILL LINE (DOMESTIC WATER SUPPLY BY G.C.)
W	1-1/4" DOUBLE CHECK VALVE BACKFLOW PREVENTER BY G.C.
X	LOUVRES IN DOORS 12" X 12" +/-, SET NEAR BOTTOM OF DOORS.

EQUIPMENT/CHEMICAL STORAGE ROOM NOTES:

- THE EQUIPMENT / CHEMICAL STORAGE ROOM CEILING HEIGHT SHALL BE 8' MINIMUM, & THE LIGHTING FOR EACH ROOM SHALL BE 100 WATTS MINIMUM.
- THE POWER VENTILATORS SHALL DISCHARGE THROUGH THE BUILDING WALL & BE DIRECTED AWAY FROM THE POOL AREA. EACH VENTILATOR SHALL OPERATE CONTINUOUSLY.
- A SUMP FOR FILTER BACKWASH SHALL BE LOCATED AS SHOWN & INSTALLED FLUSH WITH THE EQUIPMENT ROOM FLOOR. THE SUMP SHALL DISCHARGE TO THE APPROVED MUNICIPAL STORM SEWER SYSTEM BY WAY OF THE COMMUNITY BUILDING PLUMBING.
- THE OWNER / GENERAL CONTRACTOR SHALL FURNISH THE BACKFLOW PREVENTION DEVICE FOR THE POOL FILL LINE. THE POOL FILL WATER SHALL BE FROM THE APPROVED MUNICIPAL WATER SYSTEM.
- THE POOL OPERATIONAL PROCEDURE SHALL BE POSTED ON THE EQUIPMENT ROOM WALL.
- BOTH THE EQUIPMENT & CHEMICAL STORAGE ROOM ENTRY DOORS SHALL BE EITHER STEEL OR WOOD, w/ 12" SQUARE, SCREENED LOUVER, FOR VENTILATION AND SUPPLY OPENING FOR AIR EXCHANGE.
- PROVIDE SHELVING FOR DRY STORAGE OF POOL CHEMICALS PER ISA NCAC 18A.2534.

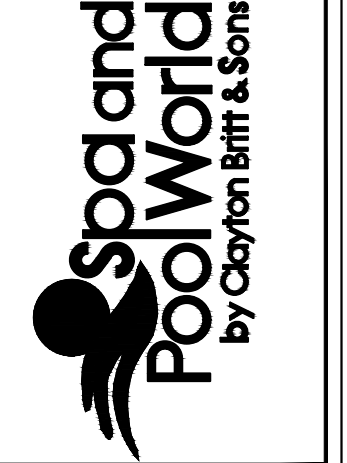


Robert Charles Evans
 2804 HAYWARD ROAD, SUITE 102, FAYETTEVILLE, NORTH CAROLINA



06.11.19

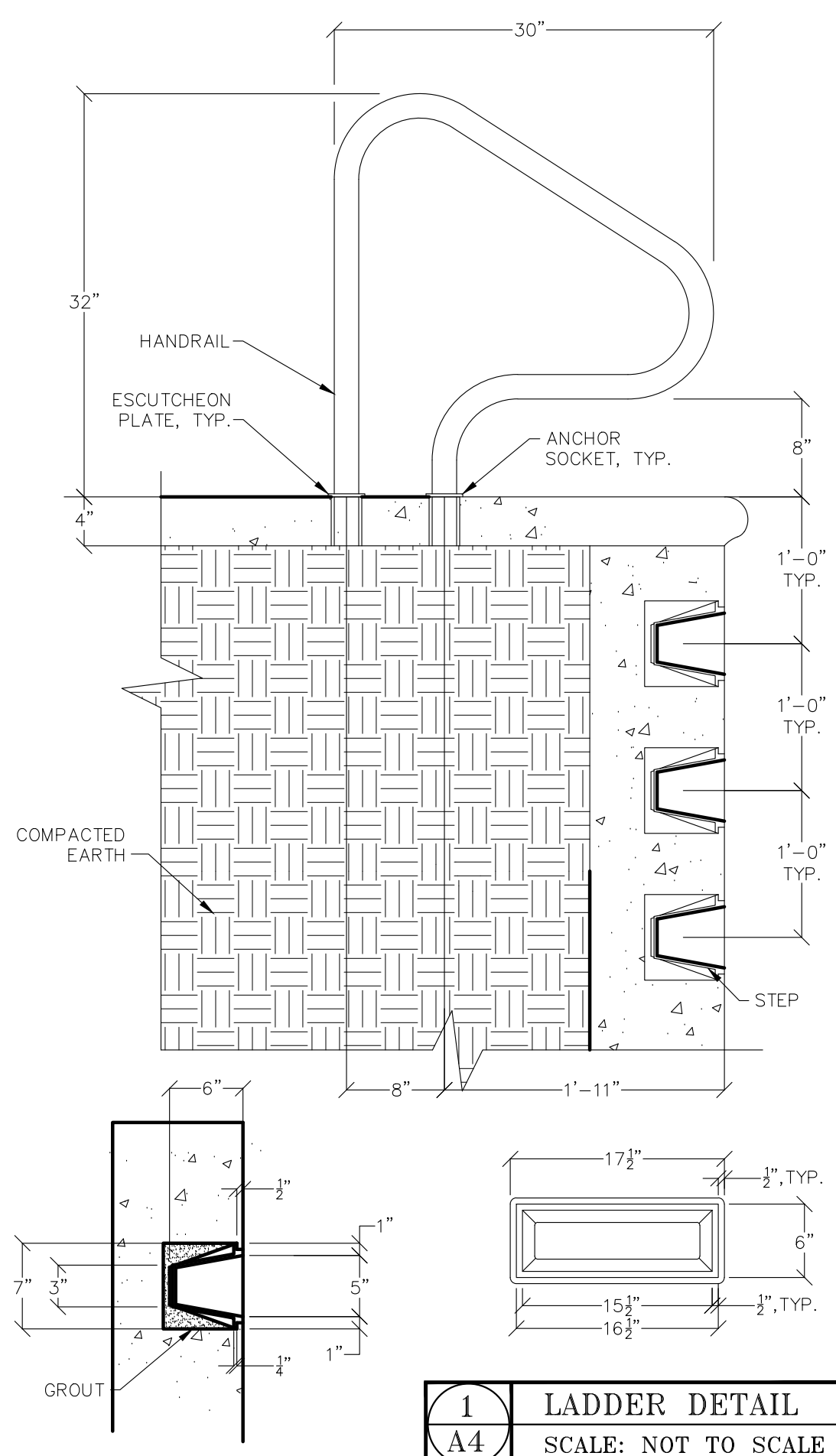
CLAYTON BRITT AND SONS, INC.
 3703 BRAGG BOULEVARD
 FAYETTEVILLE, NORTH CAROLINA 28301
 910.868.8319
 RICKY BRITT
 NC BUILDING LICENSE #36507



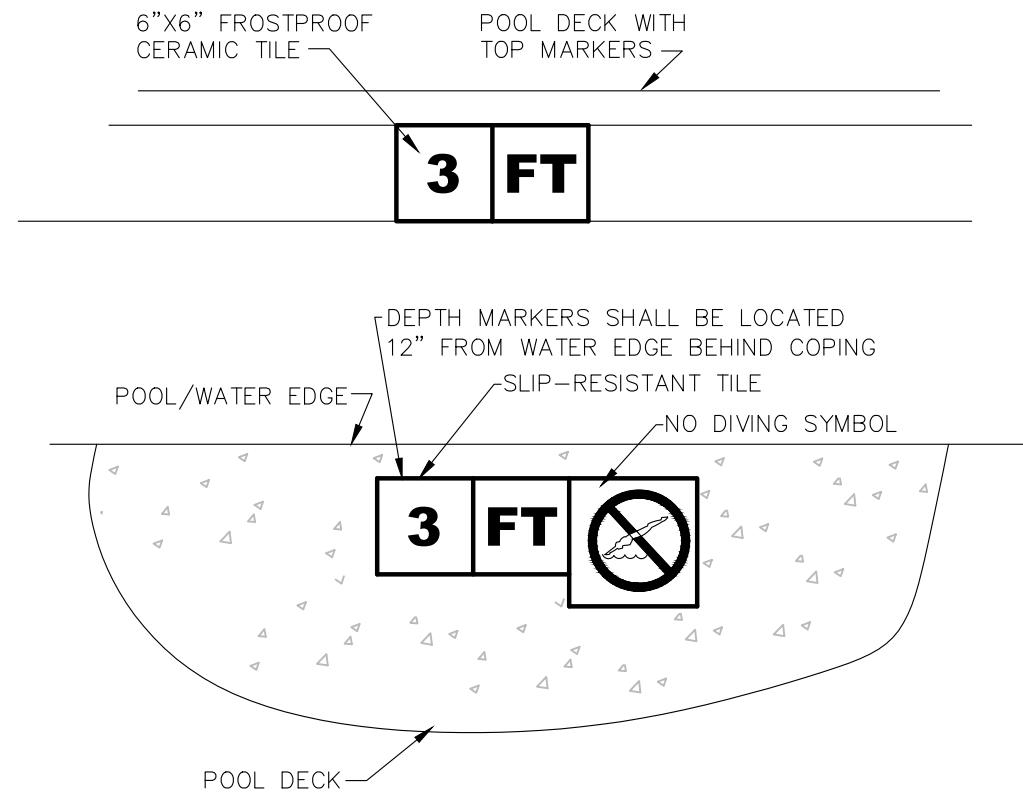
OWNERS: YMCA OF THE SANDHILLS
 2717 FT. BRAGG ROAD
 FAYETTEVILLE, NC 28303
 RICK HOUP, CEO 910-426-9622

LOCATION: YMCA OF THE SANDHILLS
 103 CARLETTA CIRCLE DRIVE
 CAMERON, NC 28526

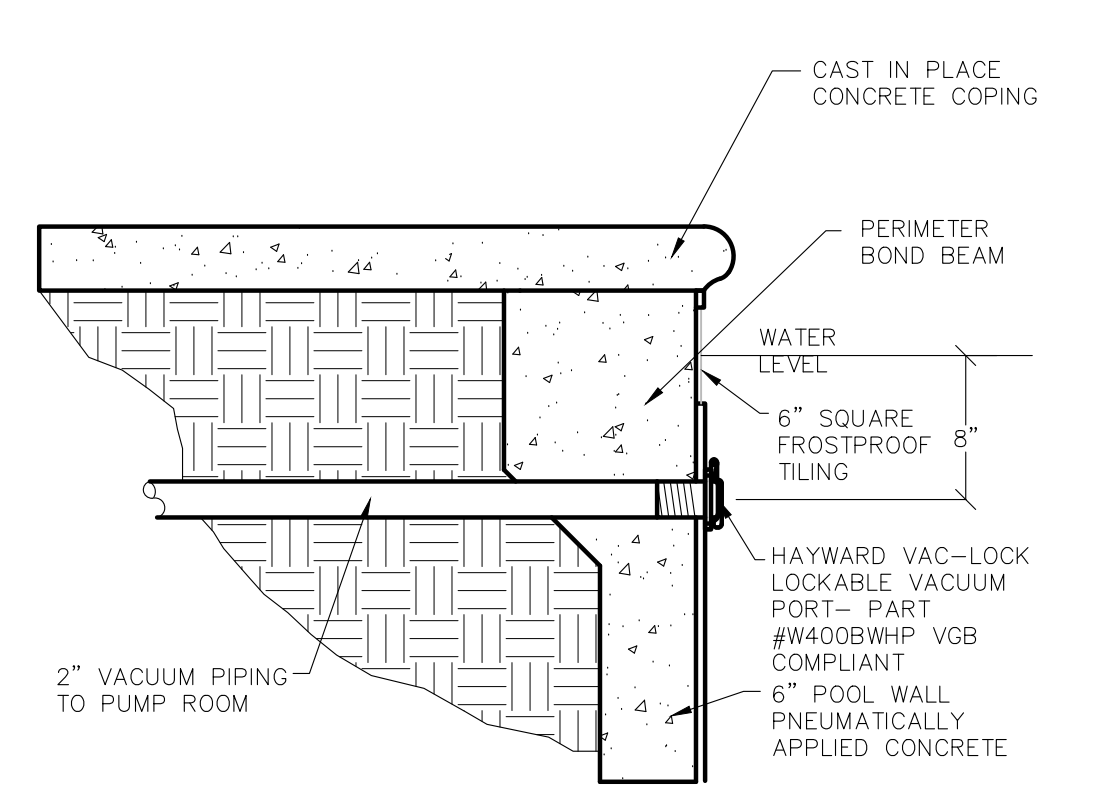
DATE: JUNE 10TH, 2019
 SCALE: AS SHOWN
 DRAWN: J. PARRISH



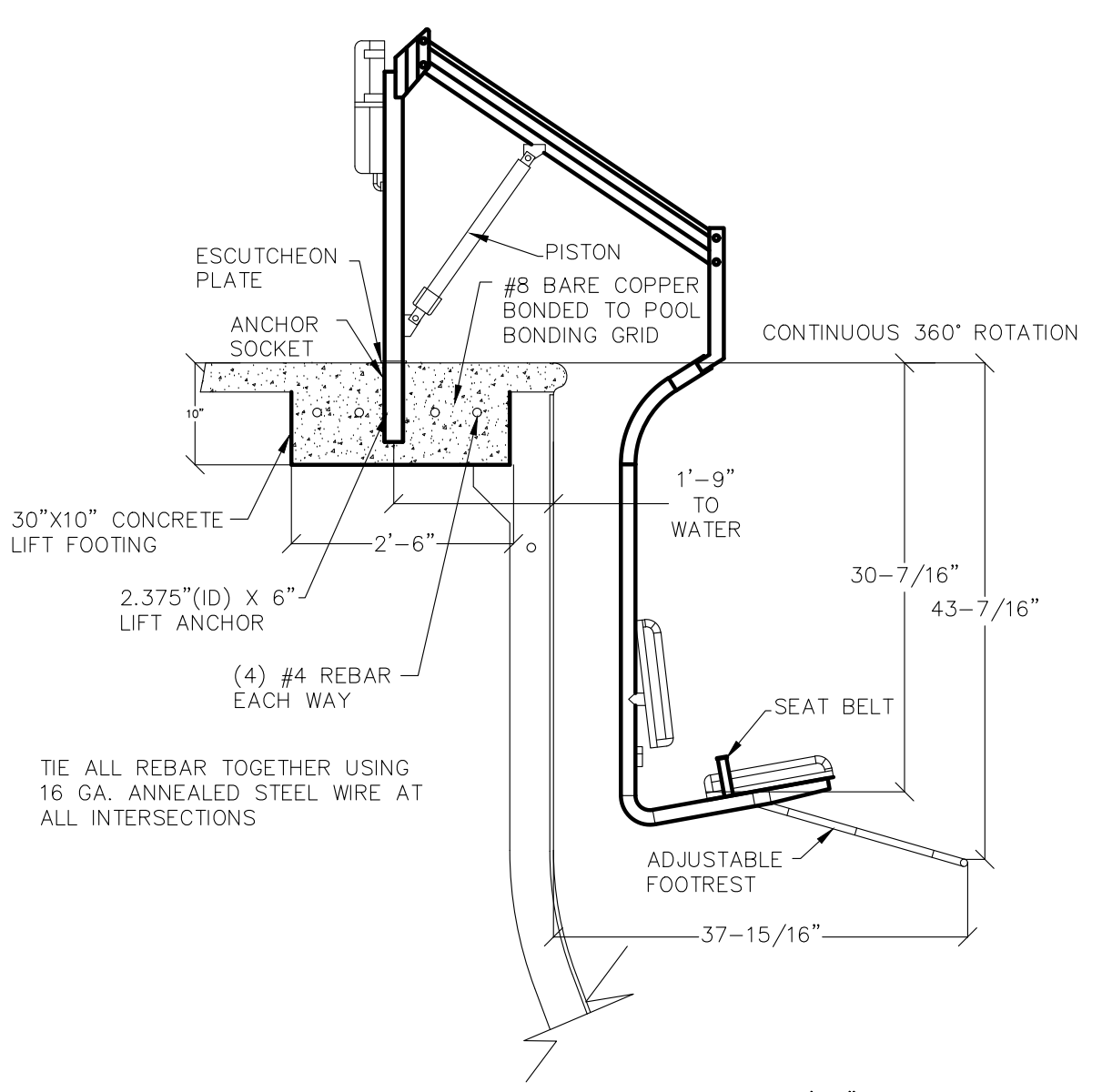
1 LADDER DETAIL
SCALE: NOT TO SCALE



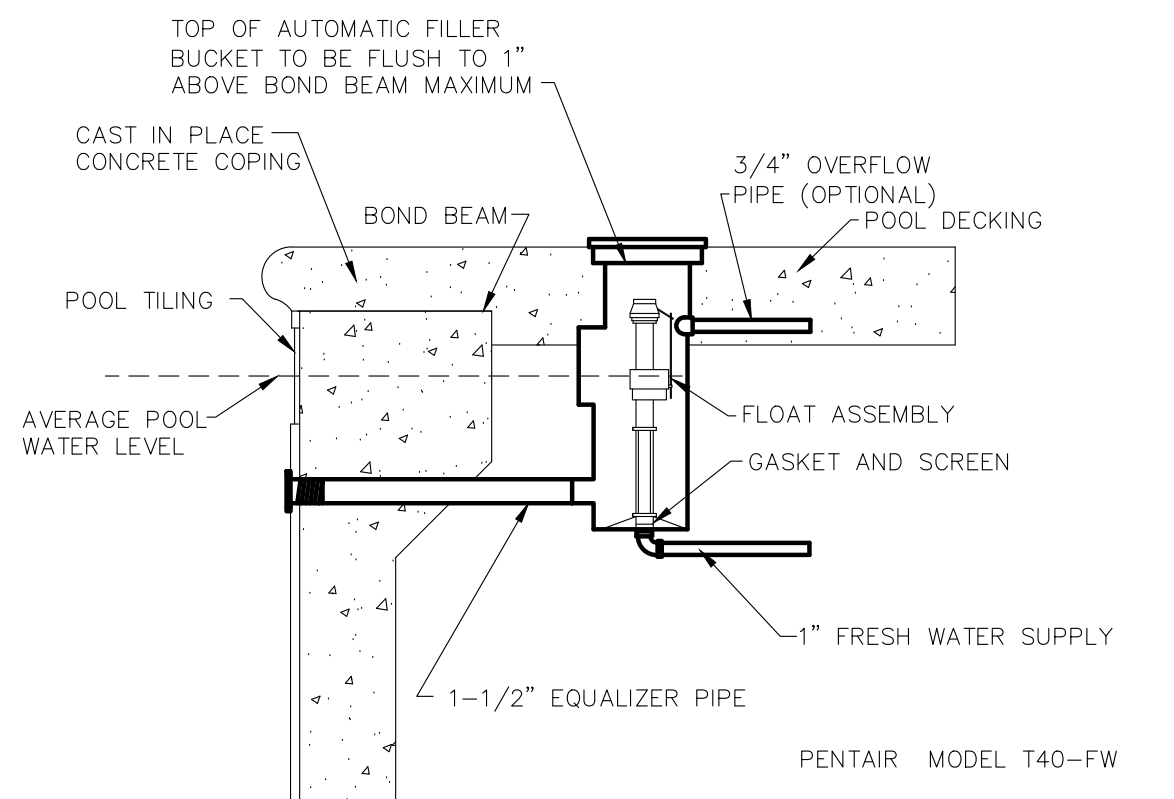
5 DEPTH MARKER DETAIL
SCALE: NOT TO SCALE



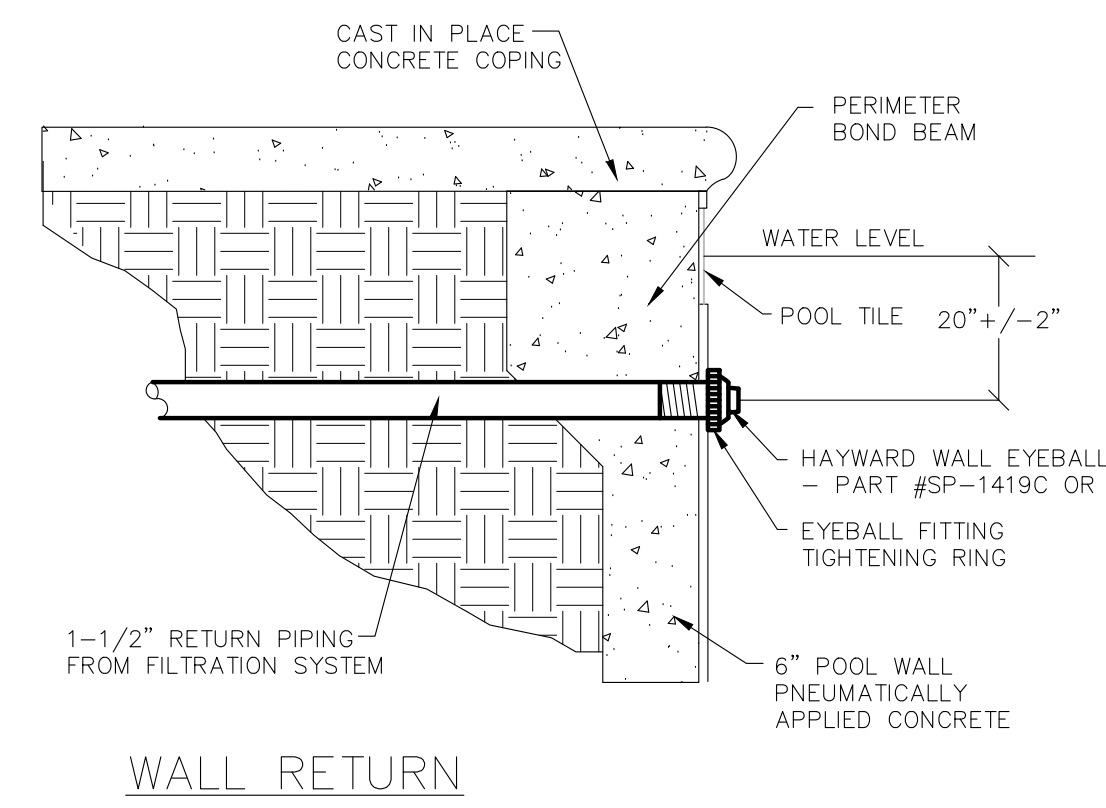
2 COPING/VACUUM DETAIL
SCALE: NOT TO SCALE



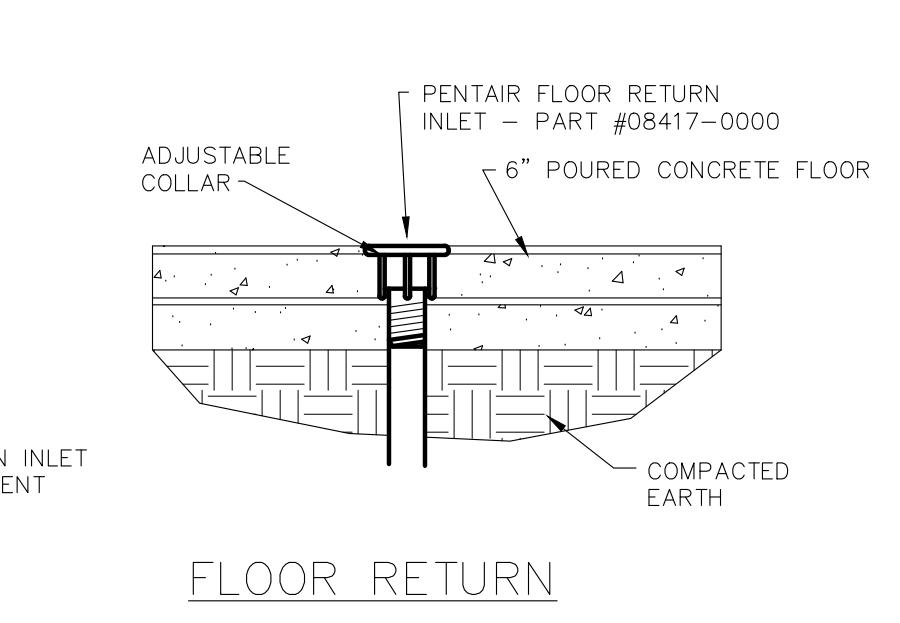
6 SPA H/C LIFT DETAIL
SCALE: NOT TO SCALE



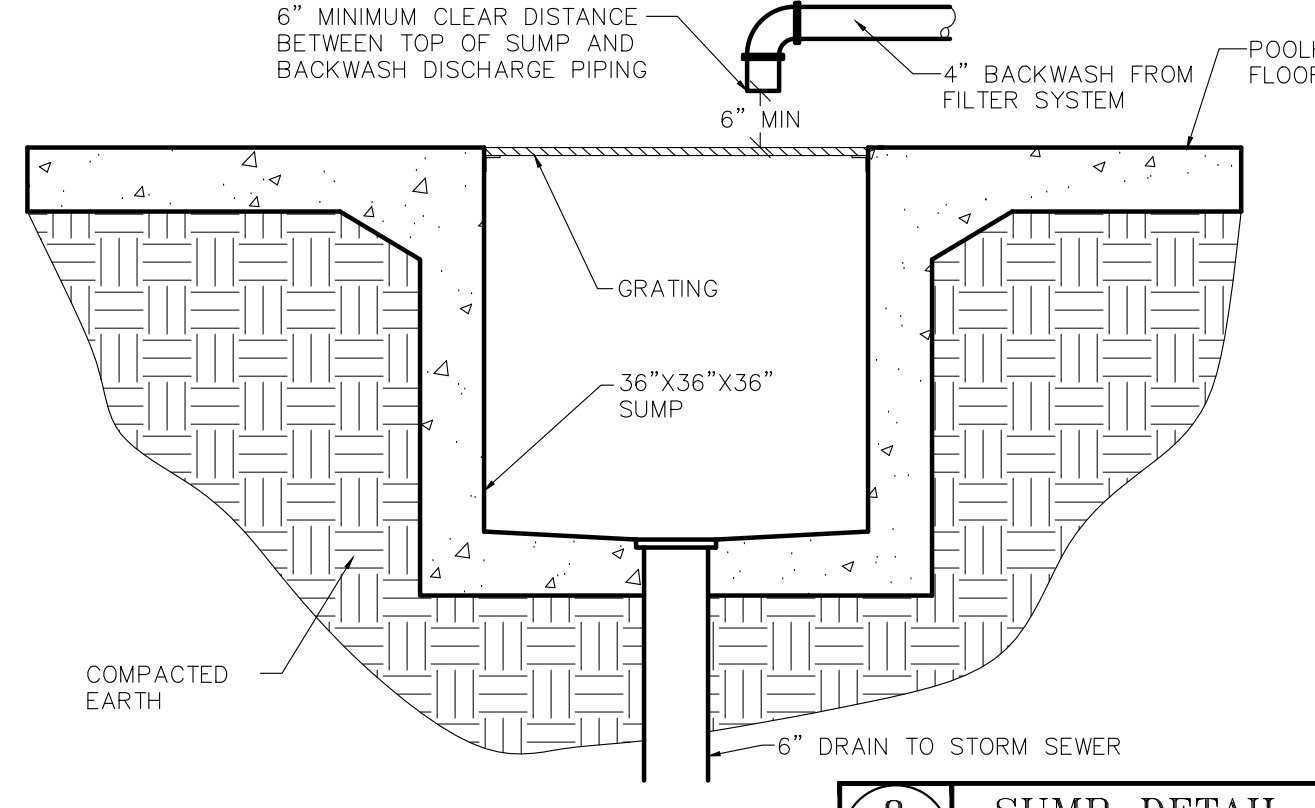
3 AUTOMATIC WATER FILL DETAIL
SCALE: NOT TO SCALE



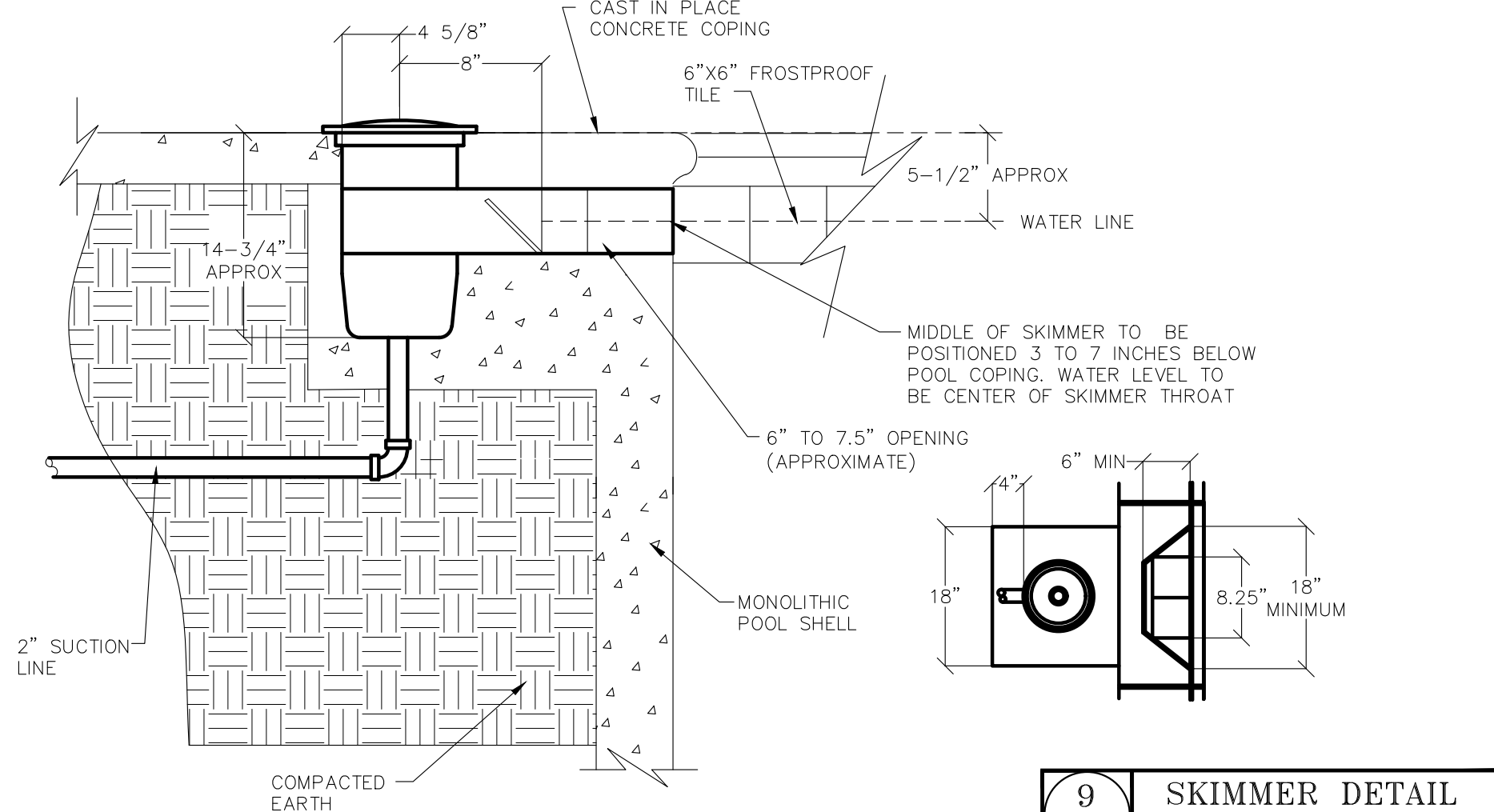
WALL RETURN



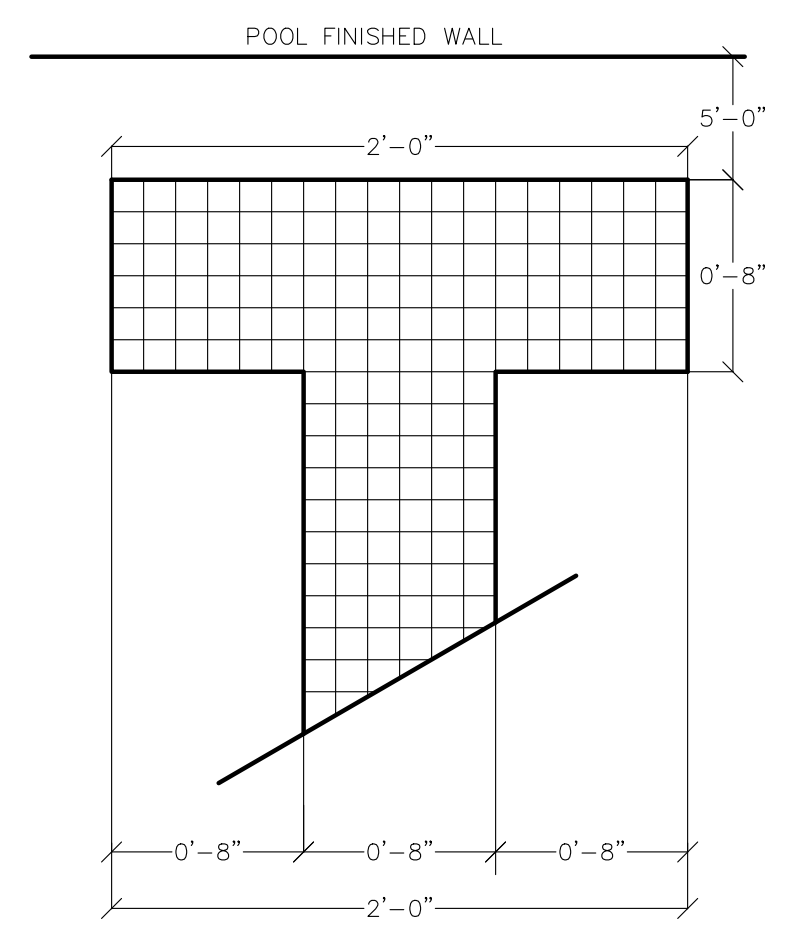
7 WALL & FLOOR RETURN DETAIL
SCALE: NOT TO SCALE



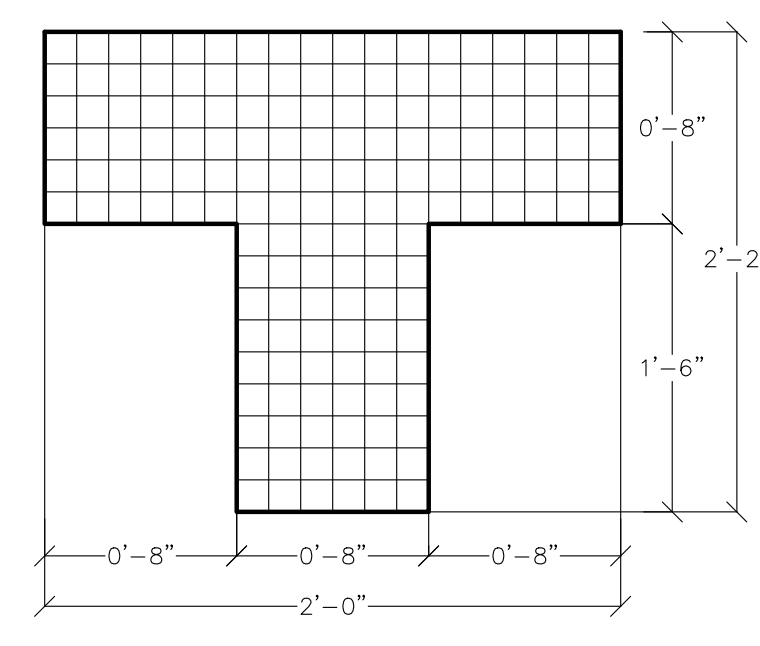
8 SUMP DETAIL
SCALE: NOT TO SCALE



9 SKIMMER DETAIL
SCALE: NOT TO SCALE



FLOOR MARKER PLAN

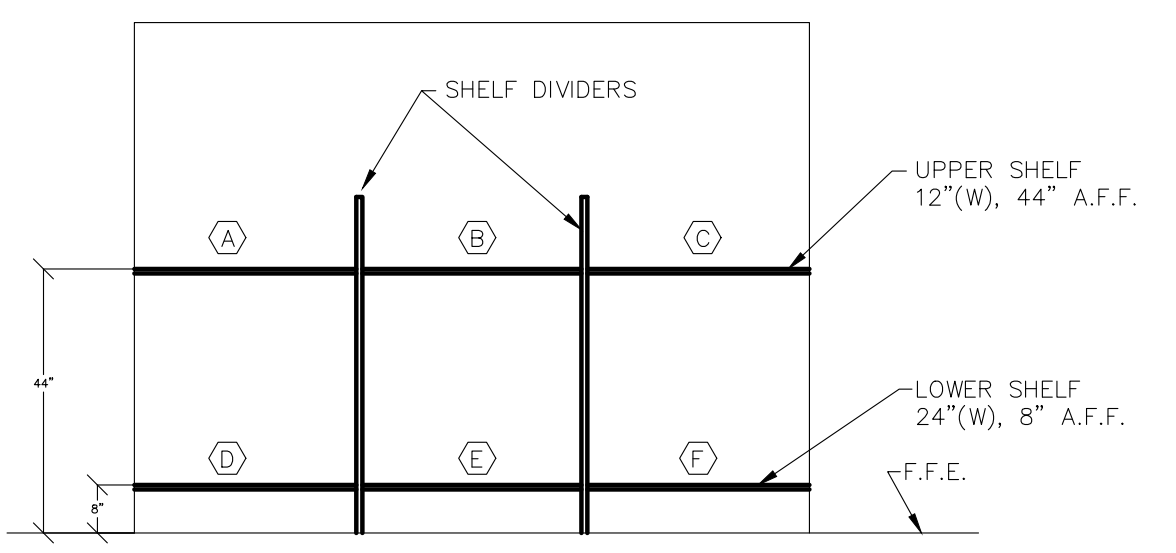


WALL TARGET ELEVATION

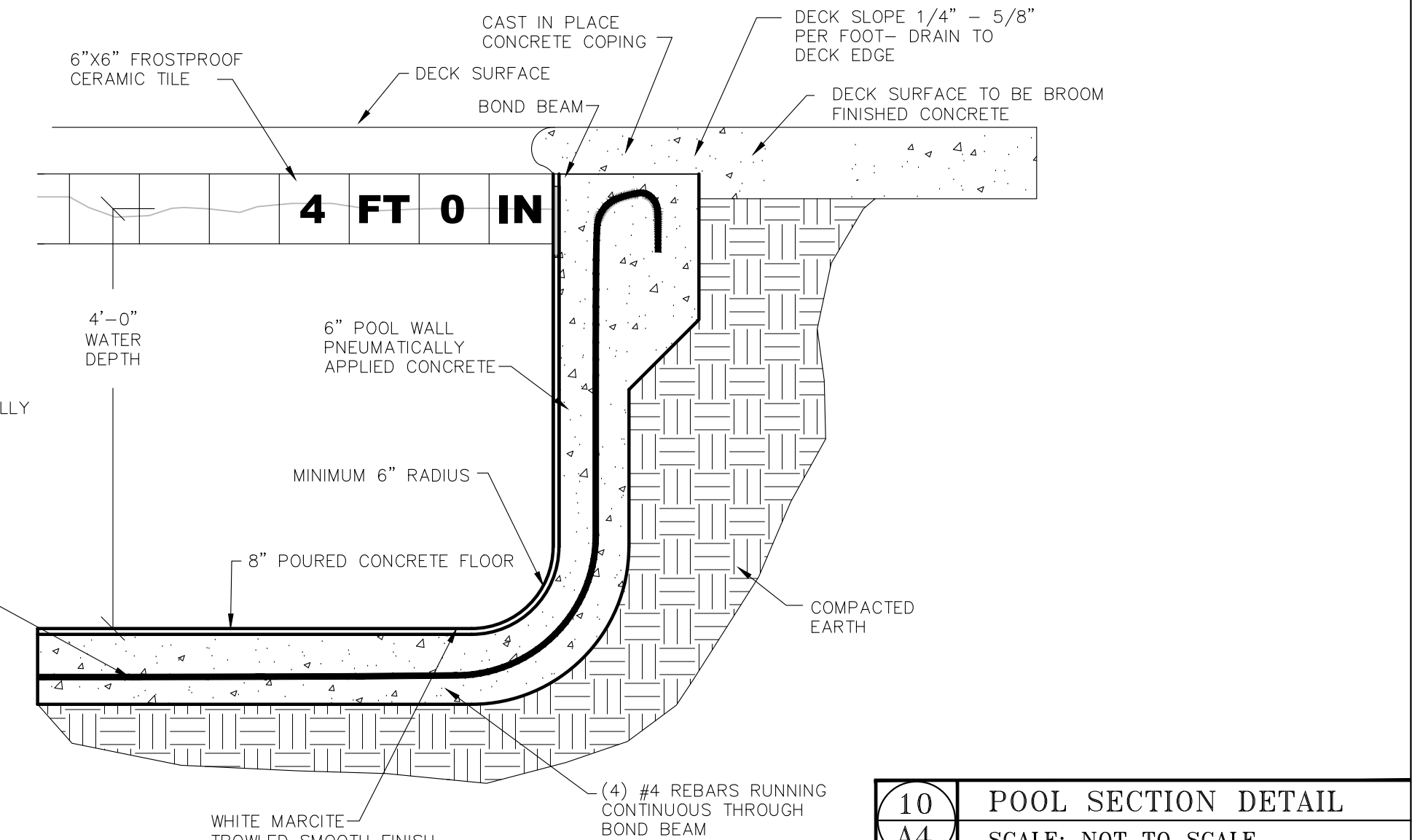
CHEMICAL ROOM SHELVING LAYOUT

TAG	ITEM TYPE	ITEM DESCRIPTION	QUANTITY
A	MISC. SUPPLIES	MISC. SUPPLIES	VARIES
B	ANCILLARIES	GLB ALGAMYCIN 2000, STAINTRINE, ROBARR SUPER BLUE	1 GAL., 1 GAL., 1/2 GAL
C	MISC. SUPPLIES	TEST KITS, THERMOMETERS, CYANURIC ACID	N/A, N/A, 8 LBS
D	OXIDIZER	CALCIUM HYPOCHLORITE	100 LBS
E	PH LOWERING CHEMICALS	MURIATIC ACID	4 GALLONS
F	OXIDIZER	PROTEAM 3 PURETABS (TRICHLOR TABS)	100 LBS
G	BALANCING CHEMICALS	SODIUM BICARBONATE, SODA ASH, CALCIUM CHLORIDE	50 LBS BAGS EACH

SHELVING & DIVIDERS: WOODEN CONSTRUCTION



11 CHEMICAL ROOM DETAIL
SCALE: NOT TO SCALE



10 POOL SECTION DETAIL
SCALE: NOT TO SCALE

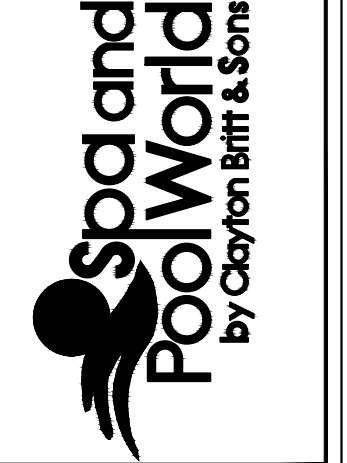
12 WALL TARGET/FLOOR MARKERS
SCALE: NOT TO SCALE

Robert Charles Evans
2804 HAYWARD ROAD, SUITE 102, FAYETTEVILLE, NORTH CAROLINA



06.11.19

CLAYTON BRITT AND SONS, INC.
3703 BRAGG BOULEVARD
FAYETTEVILLE, NORTH CAROLINA 28301
910.868.8319
RICKY BRITT
NC BUILDING LICENSE #365207



OWNERS: YMCA OF THE SANDHILLS
2717 FT. BRAGG ROAD
FAYETTEVILLE, NC 28303
RICK HOUP, CEO 910-426-9622

LOCATION: YMCA OF THE SANDHILLS
103 CARLETON CIRCLE DRIVE
CAMERON, NC 28526

DATE: JUNE 10TH, 2019
REVISIONS:
SCALE: AS SHOWN
DRAWN: J. PARRISH

SHEET NO:

A4