



24 x 50

STRUCTURAL DESIGN

ENCLOSED BUILDING

**MAXIMUM 30'-0" WIDE X 16'-0" HEIGHT-
BOX EAVE FRAME AND BOW FRAME**

**24 January 2018
Revision 0
M&A Project No. 17275S**

Prepared for:

**Quality Commercial Structures
P.O. Box 1448
Pilot Mountain, NC 27041**

Prepared by:

Moore and Associates Engineering and Consulting, Inc.

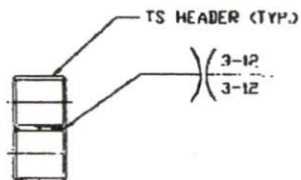
**1009 East Avenue
North Augusta, SC 29841**

**401 S. Main Street
Mount Airy, NC 27030**



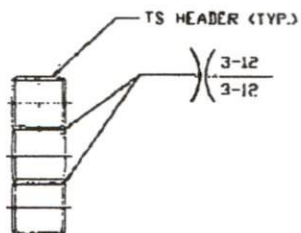
**MOORE AND ASSOCIATES
ENGINEERING AND CONSULTING**

HEADER OPTION



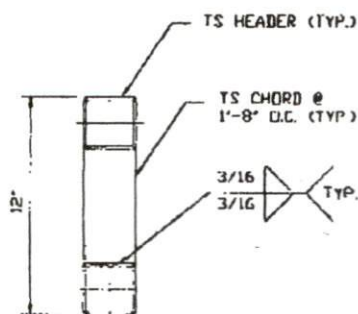
HEADER DETAIL FOR SPANS:
 $\leq 12'-0"$ (FOR GROUND SNOW LOAD ≤ 35 PSF)
 $\leq 10'-0"$ (FOR GROUND SNOW LOAD 35 PSF $< TO \leq 45$ PSF)

SCALE: NTS



HEADER DETAIL FOR SPANS:
 $12'-0" < TO \leq 16'-0"$ (FOR GROUND SNOW LOAD ≤ 35 PSF)
 $10'-0" < TO \leq 14'-0"$ (FOR GROUND SNOW LOAD
 35 PSF $< TO \leq 45$ PSF)

SCALE: NTS



HEADER DETAIL FOR SPANS:
 $16'-0" < TO \leq 20'-0"$ (FOR GROUND SNOW LOAD ≤ 35 PSF)
 $14'-0" < TO \leq 20'-0"$ (FOR GROUND SNOW LOAD
 35 PSF $< TO \leq 45$ PSF)

SCALE: NTS

**MOORE AND ASSOCIATES
 ENGINEERING AND CONSULTING, INC.**

DRAWN BY: AT

CHECKED BY: PMH

PROJECT MGR: VSM

CLIENT: QUALITY/A PLUS

QUALITY COMMERCIAL STRUCTURES / A PLUS
 P.O. BOX 1448
 PILOT MOUNTAIN, NC 27041
 30'x16' ENCLOSED BUILDING

DATE: 1-24-19

SCALE: NTS

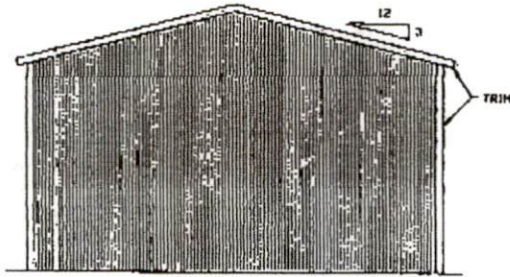
JOB NO: 172735

SHT. 17

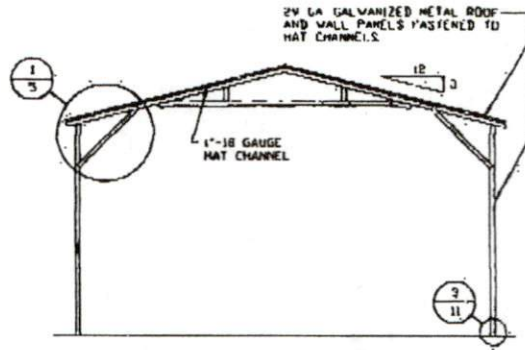
DWG. NO: SK-3

REV: 0

BOX EAVE RAFTER VERTICAL ROOF/SIDING OPTION



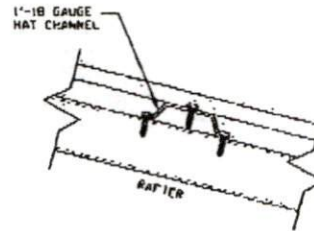
**TYPICAL END ELEVATION
VERTICAL ROOF/SIDING**
SCALE: NTS



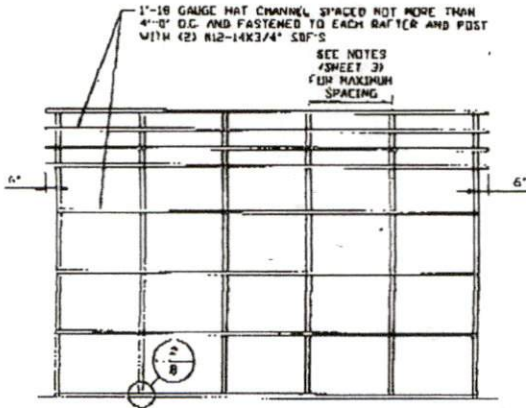
**TYPICAL SECTION VERTICAL
ROOF/SIDING OPTION**
SCALE: NTS



**TYPICAL SIDE ELEVATION
VERTICAL ROOF/SIDING**
SCALE: NTS



PANEL ATTACHMENT
(ALTERNATE FOR VERTICAL ROOF PANELS)
SCALE: NTS



**TYPICAL FRAMING SECTION
VERTICAL ROOF/SIDING OPTION**
SCALE: NTS

**MOORE AND ASSOCIATES
ENGINEERING AND CONSULTING, INC.**

DRAWN BY: AT

CHECKED BY: PM

PROJECT NO: VSM

CLIENT: QUALITY/A PLUS

QUALITY COMMERCIAL STRUCTURES / A PLUS
P.O. BOX 1448
PILOT MOUNTAIN, NC 27041
30'x16' ENCLOSED BUILDING

DATE: 1-24-18

SCALE: NTS

JOB NO: 172735

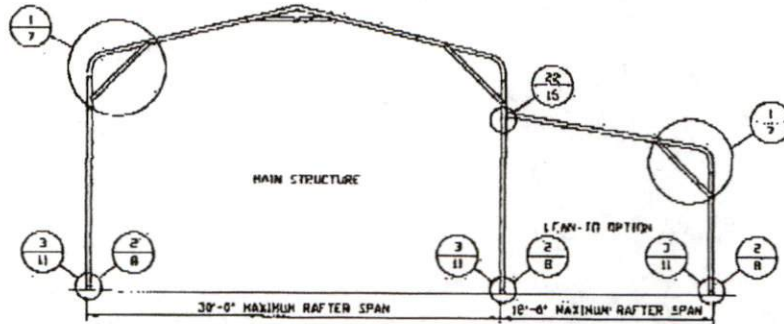
SHT. 16

DWG. NO: SK-3

REV: 0

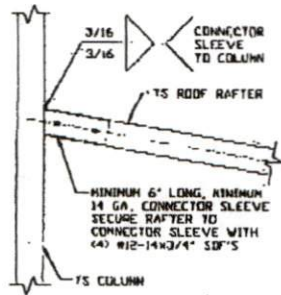
THIS DOCUMENT IS THE PROPERTY OF MOORE AND ASSOCIATES ENGINEERING AND CONSULTING, INC. UNAUTHORIZED REPRODUCTION, COPYING, OR OTHERWISE USE OF THIS DOCUMENT IS STRICTLY PROHIBITED AND ANY INFRINGEMENT THEREUPON MAY BE SUBJECT TO LEGAL ACTION.

BOW EAVE RAFTER LEAN-TO OPTION



TYPICAL BOW RAFTER LEAN-TO OPTION FRAMING SECTION

SCALE: NTS



LEAN-TO RAFTER TO RAFTER COLUMN CONNECTION DETAIL

22

SCALE: NTS

**MOORE AND ASSOCIATES
ENGINEERING AND CONSULTING, INC.**

DRAWN BY: AT

CHECKED BY: PM

PROJECT NO: VSN

CLIENT: QUALITY/A PLUS

QUALITY COMMERCIAL STRUCTURES / A PLUS
P.O. BOX 1448
PILOT MOUNTAIN, NC 27041
30'x16' ENCLOSED BUILDING

DATE: 1-24-18

SCALE: NTS

JOB NO: 17275S

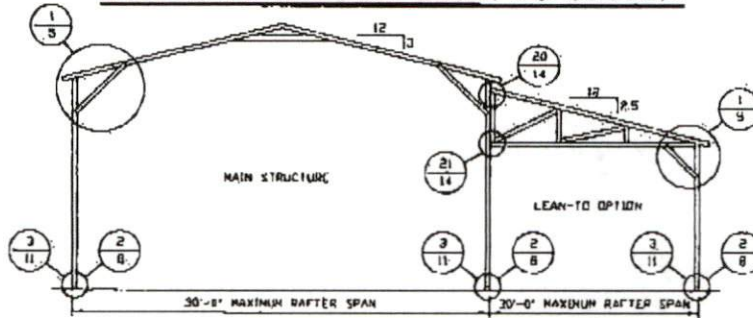
SHT. 15

DWG. NO: SK-3

REV: 0

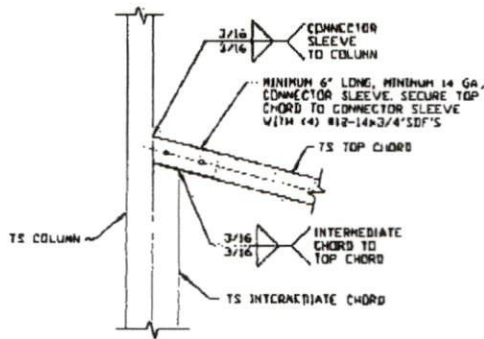
THIS DOCUMENT IS THE PROPERTY OF MOORE AND ASSOCIATES ENGINEERING AND CONSULTING. THE UNAUTHORIZED REPRODUCTION, COPYING, OR OTHERWISE USE OF THIS DOCUMENT IS STRICTLY PROHIBITED AND ANY INFRINGEMENT THEREON MAY BE SUBJECT TO LEGAL ACTION.

BOX EAVE RAFTER LEAN-TO OPTION



TYPICAL BOX EAVE RAFTER LEAN-TO OPTIONS FRAMING SECTION

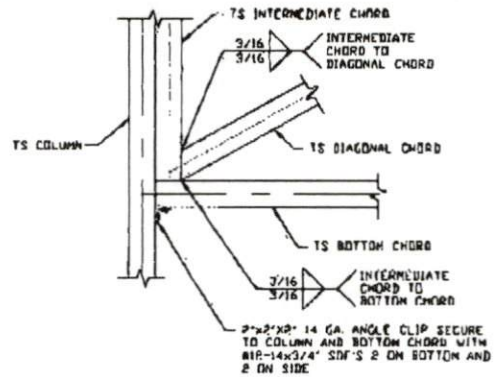
SCALE: NTS



20

LEAN-TO RAFTER TO RAFTER COLUMN CONNECTION DETAIL

SCALE: NTS



21

LEAN-TO RAFTER TO RAFTER COLUMN CONNECTION DETAIL

SCALE: NTS

**MOORE AND ASSOCIATES
ENGINEERING AND CONSULTING, INC.**

DRAWN BY: AT

CHECKED BY: PDM

PROJECT NO: WSM

CLIENT: QUALITY/A PLUS

QUALITY COMMERCIAL STRUCTURES / A PLUS
P.O. BOX 1448
PILOT MOUNTAIN, NC 27041
30'x16' ENCLOSED BUILDING

DATE: 1-24-18

SCALE: NTS

JOB NO: 172735

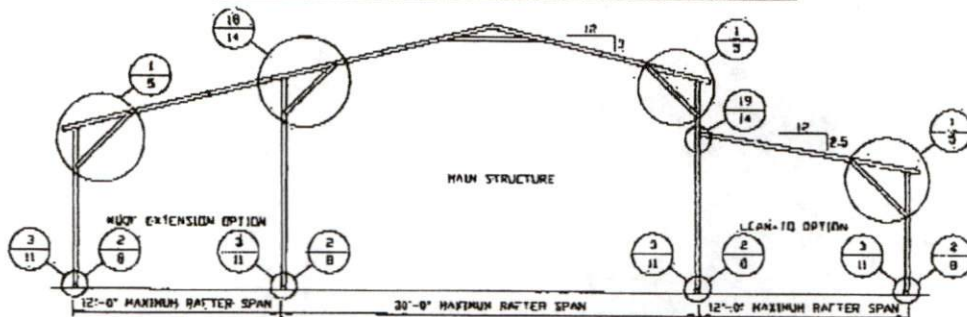
SHT. 14A

DWG. NO: SK-3

REV. 0

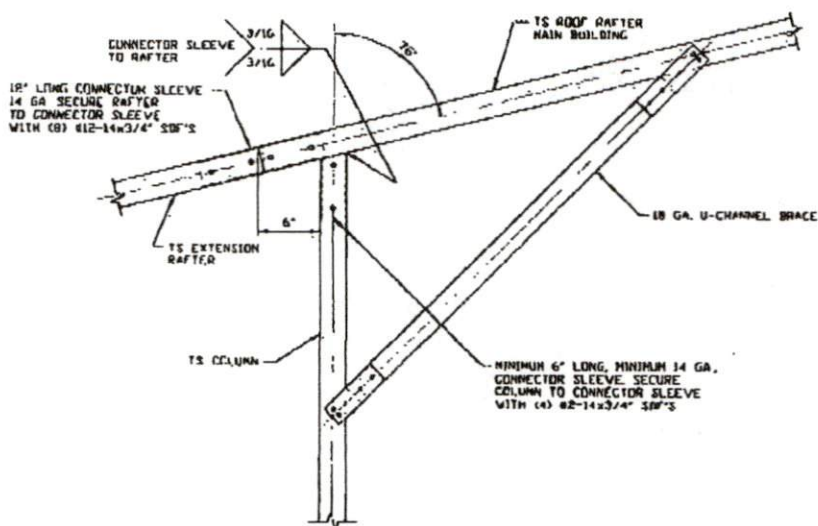
THIS DOCUMENT IS THE PROPERTY OF MOORE AND ASSOCIATES ENGINEERING AND CONSULTING. THE UNAUTHORIZED REPRODUCTION, COPYING, OR OTHERWISE USE OF THIS DOCUMENT IS STRICTLY PROHIBITED AND ANY INFRINGEMENT THEREUPON MAY BE SUBJECT TO LEGAL ACTION.

BOX EAVE RAFTER LEAN-TO OPTION

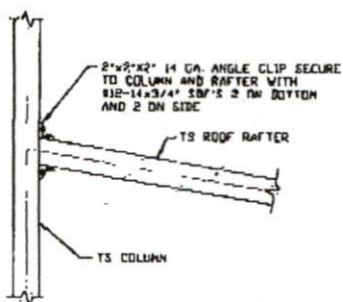


TYPICAL BOX EAVE RAFTER LEAN-TO OPTIONS FRAMING SECTION (BOTH OPTIONS SHOWN)

SCALE: NTS



18 SIDE EXTENSION RAFTER/COLUMN DETAIL
SCALE: NTS



19 LEAN-TO RAFTER TO RAFTER COLUMN CONNECTION DETAIL
SCALE: NTS

**MOORE AND ASSOCIATES
ENGINEERING AND CONSULTING, INC.**

DRAWN BY: AT

CHECKED BY: PMH

PROJECT: HGR WSN

CLIENT: QUALITY/A PLUS

QUALITY COMMERCIAL STRUCTURES / A PLUS
P.O. BOX 1448
PILOT MOUNTAIN, NC 27041
30'x16' ENCLOSED BUILDING

DATE: 1-24-19

SCALE: NTS

SHEET NO: 17278S

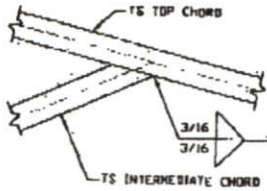
SHT. 14

DWG. NO: SK-3

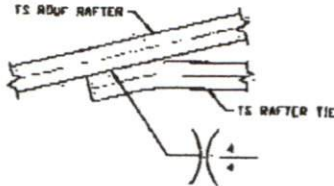
REV: 0

THIS DOCUMENT IS THE PROPERTY OF MOORE AND ASSOCIATES ENGINEERING AND CONSULTING, INC. UNAUTHORIZED REPRODUCTION, COPYING, OR OTHERWISE USE OF THIS DOCUMENT IS STRICTLY PROHIBITED AND ANY INFRACTION THEREUPON MAY BE SUBJECT TO LEGAL ACTION.

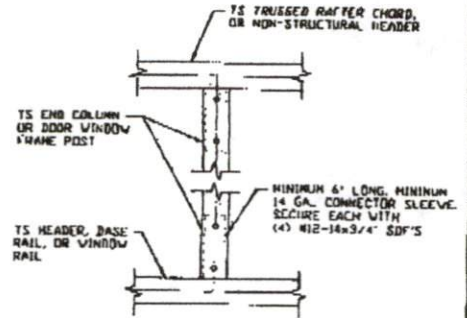
CONNECTION DETAILS



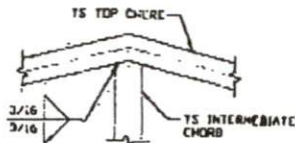
11 TOP CHORD TO INTERMEDIATE CHORD CONNECTION DETAIL
SCALE: NTS



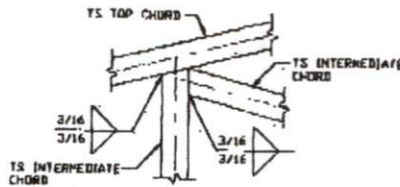
12 RAFTER TIE CONNECTION DETAIL
SCALE: NTS



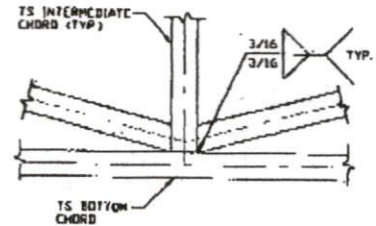
13 COLUMN TO HEADER OR BASE RAIL CONNECTION DETAIL
SCALE: NTS



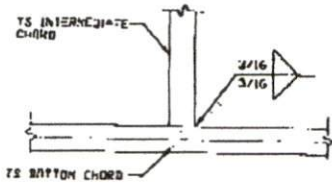
14 TOP CHORD TO INTERMEDIATE CHORD CONNECTION DETAIL
SCALE: NTS



15 TOP CHORD TO INTERMEDIATE CHORD CONNECTION DETAIL
SCALE: NTS



16 BOTTOM CHORD TO INTERMEDIATE CHORD CONNECTION DETAIL
SCALE: NTS



17 BOTTOM CHORD TO CHORD CONNECTION DETAIL
SCALE: NTS

**MOORE AND ASSOCIATES
ENGINEERING AND CONSULTING, INC.**

DRAWN BY: AT

CHECKED BY: PMH

PROJECT NO: VSH

CLIENT: QUALITY/A PLUS

QUALITY COMMERCIAL STRUCTURES / A PLUS
P.O. BOX 1448
PILOT MOUNTAIN, NC 27041
30'x16' ENCLOSED BUILDING

DATE: 1-24-19

SCALE: NTS

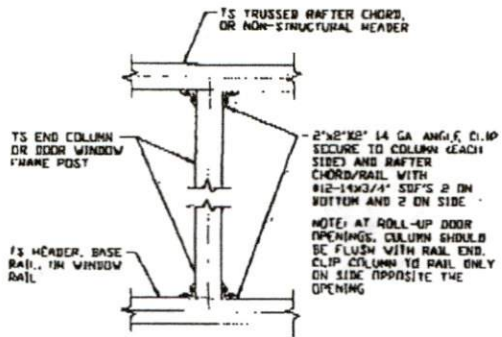
JOB NO: 178755

SHT. 13

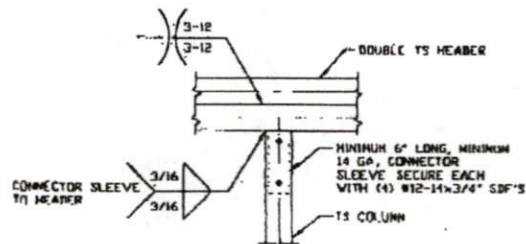
DWG NO: SK-3

REV: 0

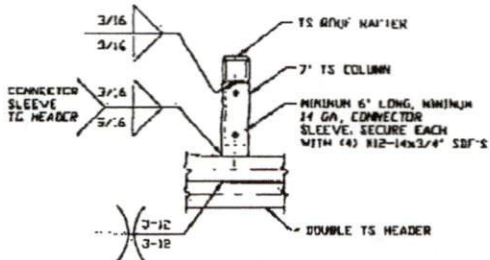
CONNECTION DETAILS



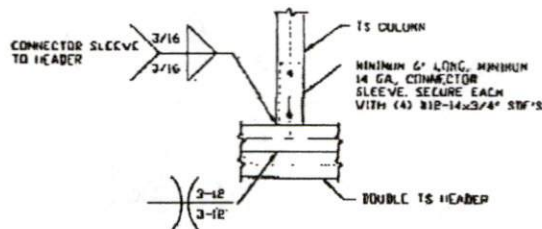
7 COLUMN TO WINDOW RAIL CONNECTION DETAIL
SCALE: NTS



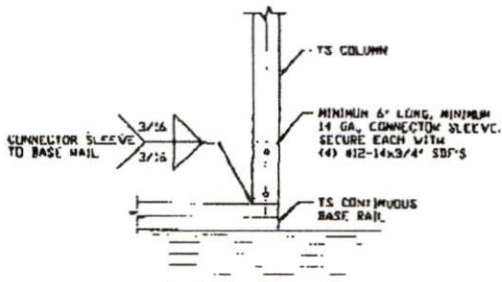
8 DOUBLE HEADER/COLUMN CONNECTION DETAIL
SCALE: NTS



9A COLUMN/DOUBLE HEADER CONNECTION DETAIL
SCALE: NTS



9B COLUMN/DOUBLE HEADER CONNECTION DETAIL
SCALE: NTS



10 COLUMN/BASE RAIL CONNECTION DETAIL
SCALE: NTS

**MOORE AND ASSOCIATES
ENGINEERING AND CONSULTING, INC.**

DRAWN BY: AT

CHECKED BY: PMH

PROJECT NO: WSM

CLIENT: QUALITY/A PLUS

QUALITY COMMERCIAL STRUCTURES / A PLUS
P.O. BOX 1448
PILOT MOUNTAIN, NC 27041
30'x16' ENCLOSED BUILDING

DATE: 1-24-18

SCALE: NTS

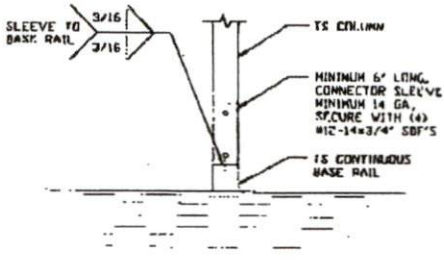
JOB NO: 178785

SHT. 12

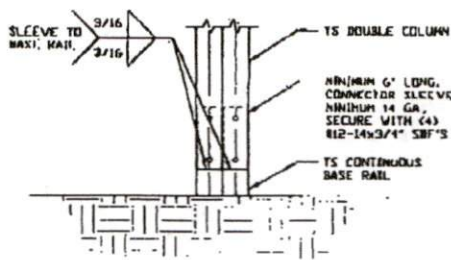
DWG. NO: SK-3

REV: 0

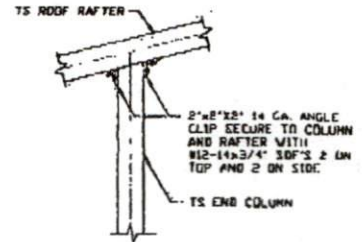
CONNECTION DETAILS



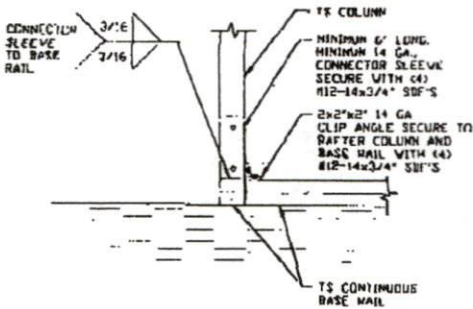
3 RAFTER COLUMN/BASE RAIL CONNECTION DETAIL
SCALE: NTS



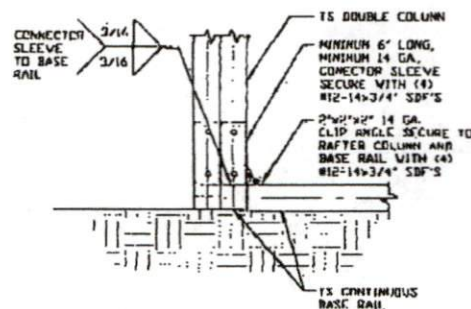
3A RAFTER COLUMN/BASE RAIL CONNECTION DETAIL
SCALE: NTS



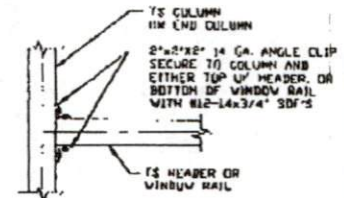
4 END COLUMN/RAFTER CONNECTION DETAIL
SCALE: NTS



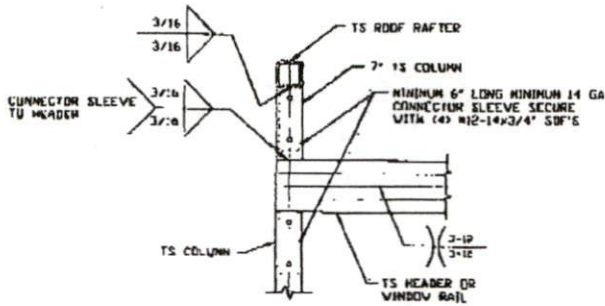
5 END COLUMN/BASE RAIL CONNECTION DETAIL
SCALE: NTS



5A END COLUMN/BASE RAIL CONNECTION DETAIL
SCALE: NTS



6 COLUMN OR WINDOW RAIL TO POST CONNECTION DETAIL
SCALE: NTS



6A COLUMN OR WINDOW RAIL TO POST CONNECTION DETAIL
SCALE: NTS

**MOORE AND ASSOCIATES
ENGINEERING AND CONSULTING, INC.**

DRAWN BY: AT

CHECKED BY: PDH

PROJECT NO: W3H

CLIENT: QUALITY/A PLUS

QUALITY COMMERCIAL STRUCTURES / A PLUS
P.O. BOX 1448
PILOT MOUNTAIN, NC 27041
30'x16' ENCLOSED BUILDING

DATE: 1-24-19

SCALE: NTS

JOB NO: 172755

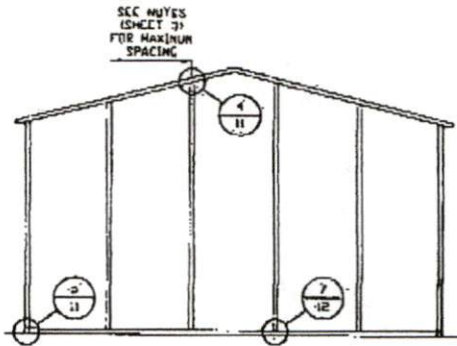
SHT. 11

DWG. NO: SK-3

REV. 0

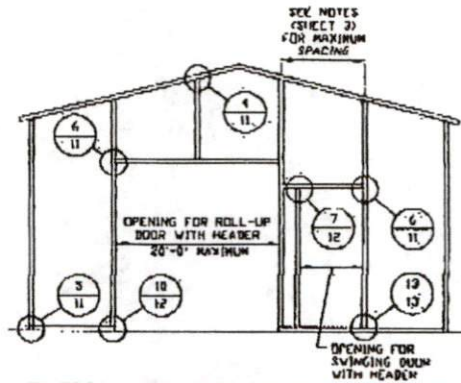
THIS DOCUMENT IS THE PROPERTY OF MOORE AND ASSOCIATES ENGINEERING AND CONSULTING. THE UNAUTHORIZED REPRODUCTION, COPYING, OR OTHERWISE USE OF THIS DOCUMENT IS STRICTLY PROHIBITED AND ANY IMPROVEMENT THEREUPON MAY BE SUBJECT TO LEGAL ACTION.

BOX EAVE RAFTER END WALL AND SIDE WALL OPENINGS



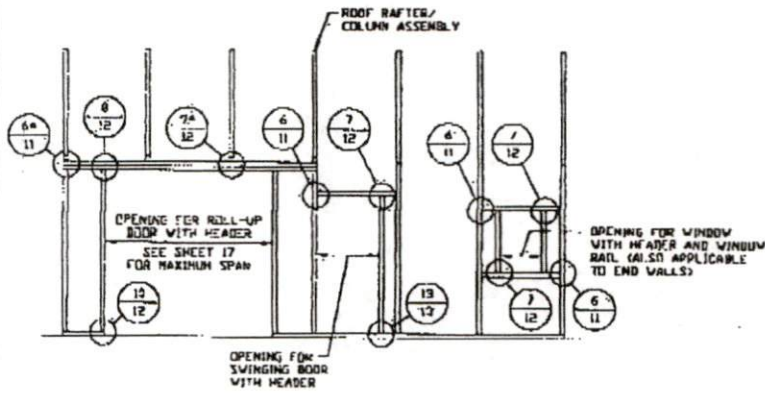
**TYPICAL BOX EAVE RAFTER
END WALL FRAMING SECTION**

SCALE: NTS



**TYPICAL BOX EAVE RAFTER END
WALL OPENINGS FRAMING SECTION**

SCALE: NTS



**TYPICAL BOX EAVE RAFTER
SIDE WALL OPENINGS FRAMING SECTION**

SCALE: NTS

**MOORE AND ASSOCIATES
ENGINEERING AND CONSULTING, INC.**

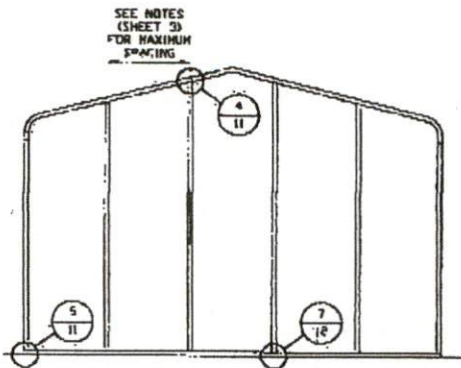
DRAWN BY: AT
CHECKED BY: PSH

QUALITY COMMERCIAL STRUCTURES / A PLUS
P.O. BOX 1448
PILOT MOUNTAIN, NC 27041
30'x16' ENCLOSED BUILDING

THIS DOCUMENT IS THE PROPERTY OF MOORE AND ASSOCIATES ENGINEERING AND CONSULTING. THE UNAUTHORIZED REPRODUCTION, COPYING, OR OTHERWISE USE OF THIS DOCUMENT IS STRICTLY PROHIBITED AND ANY INFRACTION THEREUPON MAY BE SUBJECT TO LEGAL ACTION.

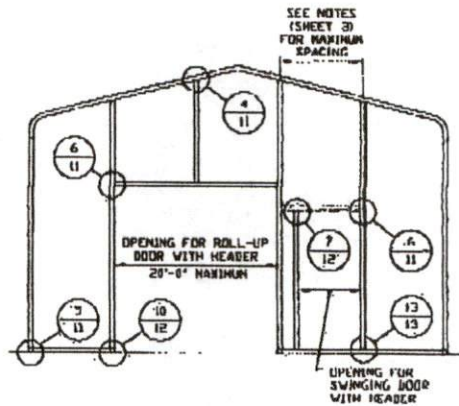
PROJECT MGR: VSM	DATE: 1-24-18	SCALE: NTS	JOB NO.: 172733
CLIENT: QUALITY/A PLUS	SHT.: 9	DWG. NO.: SK-3	REV.: 0

BOW RAFTER END WALL AND SIDE WALL OPENINGS



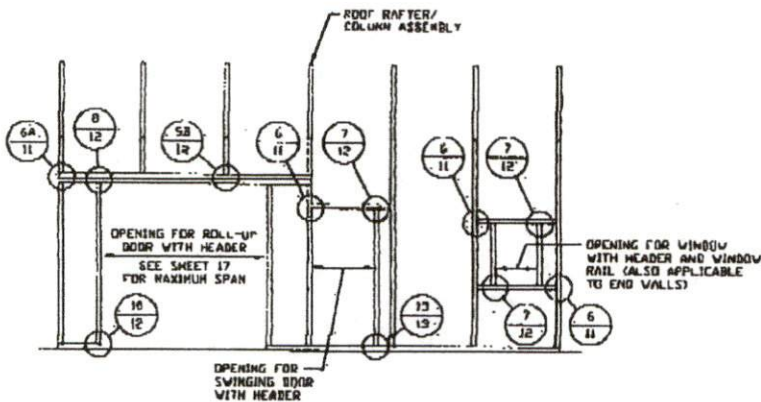
**TYPICAL BOW RAFTER
END WALL FRAMING SECTION**

SCALE: NTS



**TYPICAL BOW RAFTER END
WALL OPENINGS FRAMING SECTION**

SCALE: NTS



**TYPICAL BOW RAFTER SIDE
WALL OPENINGS FRAMING SECTION**

SCALE: NTS

**MOORE AND ASSOCIATES
ENGINEERING AND CONSULTING, INC.**

DRAWN BY: AT

CHECKED BY: PDM

PROJECT NO.: WSM

CLIENT: QUALITY/A PLUS

QUALITY COMMERCIAL STRUCTURES / A PLUS
P.O. BOX 1448
PILOT MOUNTAIN, NC 27041
30'x16' ENCLOSED BUILDING

DATE: 1-24-88

SCALE: NTS

JOB NO.: 172755

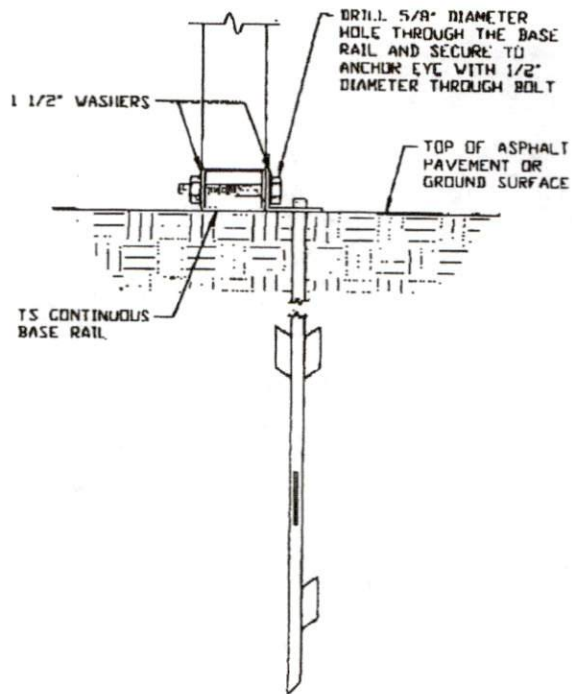
SMT. NO.: 10

DWG. NO.: SK-3

REV.: 0

THIS DOCUMENT IS THE PROPERTY OF MOORE AND ASSOCIATES ENGINEERING AND CONSULTING, INC. UNAUTHORIZED REPRODUCTION, COPYING, OR OTHERWISE USE OF THIS DOCUMENT IS STRICTLY PROHIBITED AND ANY INFRINGEMENT THEREOF MAY BE SUBJECT TO LEGAL ACTION.

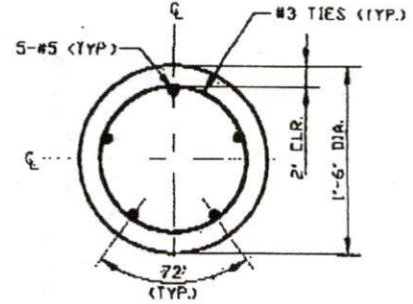
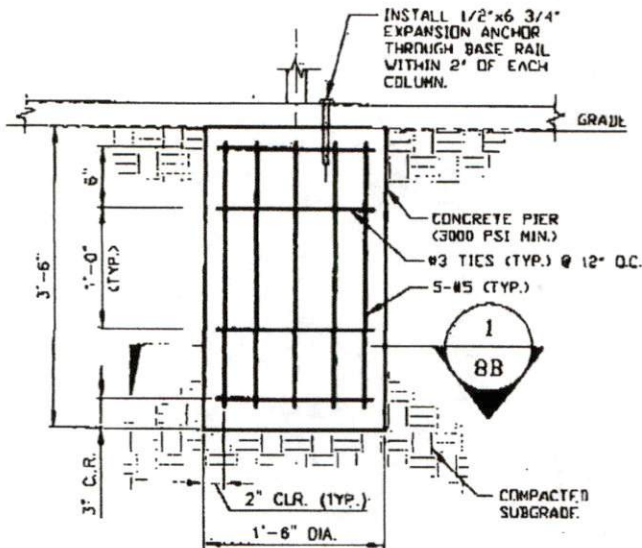
BASE RAIL ANCHORAGE OPTIONS



2C
ASPHALT BASE ANCHORAGE
 SCALE: NTS

MOORE AND ASSOCIATES ENGINEERING AND CONSULTING, INC.	DRAWN BY: AT	QUALITY COMMERCIAL STRUCTURES / A PLUS P.O. BOX 1448 PILOT MOUNTAIN, NC 27041 30'x16' ENCLOSED BUILDING		
	CHECKED BY: PDH			
THIS DOCUMENT IS THE PROPERTY OF MOORE AND ASSOCIATES ENGINEERING AND CONSULTING. THE UNAUTHORIZED REPRODUCTION, COPYING, OR OTHERWISE USE OF THIS DOCUMENT IS STRICTLY PROHIBITED AND ANY INFRACTION THEREUPON MAY BE SUBJECT TO LEGAL ACTION.	PROJECT: MGR WSM	DATE: 1-24-10	SCALE: NTS	JOB NO: 172738
	CLIENT: QUALITY/A PLUS	SHT. 8A	DWG. NO SK-3	REV: 0

BASE RAIL ANCHORAGE OPTIONS

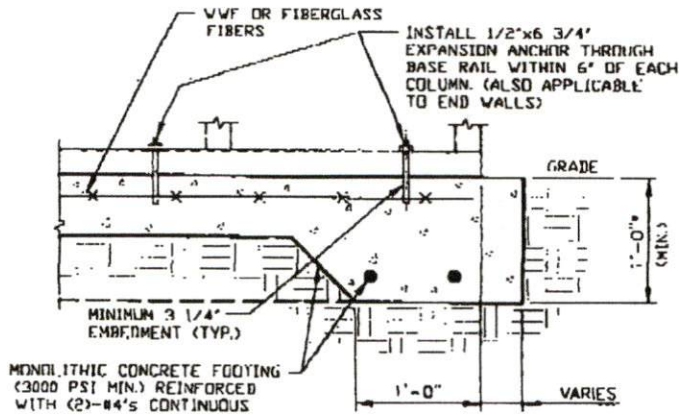


1 SECTION
SCALE: NTS

2D DRILLED CONCRETE PIER BASE RAIL ANCHORAGE
SCALE: NTS
(NOTE: MIN. ANCHOR EDGE DISTANCE IS 4")

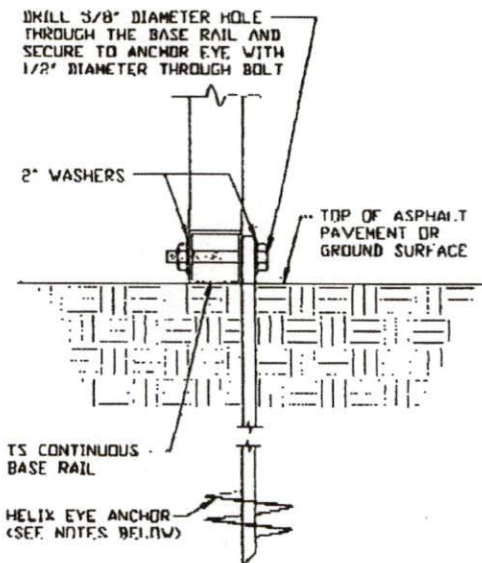
MOORE AND ASSOCIATES ENGINEERING AND CONSULTING, INC.	DRAWN BY: AT	QUALITY COMMERCIAL STRUCTURES / A PLUS		
	CHECKED BY: PDM	P.O. BOX 1448 PILOT MOUNTAIN, NC 27041 30'x16' ENCLOSED BUILDING		
THIS DOCUMENT IS THE PROPERTY OF MOORE AND ASSOCIATES ENGINEERING AND CONSULTING. THE UNAUTHORIZED REPRODUCTION, COPYING, OR OTHERWISE USE OF THIS DOCUMENT IS STRICTLY PROHIBITED AND ANY INFRINGEMENT THEREOF MAY BE SUBJECT TO LEGAL ACTION.	PROJECT NO: WSM	DATE: 1-24-19	SCALE: NTS	JOB NO: 172735
	CLIENT: QUALITY/A PLUS	SHT. 8B	DWG. NO SK-3	REV: 0

BASE RAIL ANCHORAGE OPTIONS



2A CONCRETE MONOLITHIC SLAB BASE RAIL ANCHORAGE
 SCALE: NTS
 MINIMUM ANCHOR EDGE DISTANCE IS 4".

* COORDINATE WITH LOCAL BUILDING CODE AND/OR BUILDING OFFICIAL REGARDING REQUIRED FOOTING DEPTH.



2B GROUND BASE HELIX ANCHORAGE
 SCALE: NTS (CAN BE USED FOR ASPHALT)

GENERAL NOTES

CONCRETE:

CONCRETE SHALL HAVE A MINIMUM SPECIFIED COMPRESSIVE STRENGTH OF 3,000 PSI AT 28 DAYS.

COVER OVER REINFORCING STEEL:

FOR FOUNDATIONS, MINIMUM CONCRETE COVER OVER REINFORCING BARS SHALL BE PER ACI-308:
 3" IN FOUNDATIONS WHERE THE CONCRETE IS CAST AGAINST AND PERMANENTLY IN CONTACT WITH THE EARTH OR EXPOSED TO THE EARTH OR WEATHER, AND 1 1/2" ELSEWHERE.

REINFORCING STEEL:

THE TURNDOWN REINFORCING STEEL SHALL BE ASTM A615 GRADE 60. THE SLAB REINFORCEMENT SHALL BE WELDED WIRE FABRIC MEETING ASTM A185 OR FIBERGLASS FIBER REINFORCEMENT.

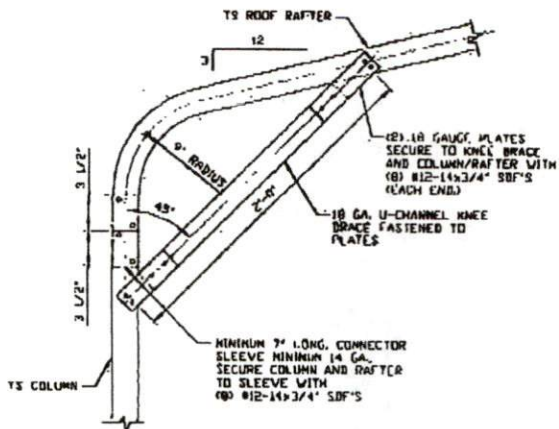
REINFORCEMENT MAY BE BENT IN THE SHOP OR THE FIELD PROVIDED:

1. REINFORCEMENT IS BENT COLD.
2. THE DIAMETER OF THE BEND, MEASURED ON THE INSIDE OF THE BAR, IS NOT LESS THAN SIX-BAR DIAMETERS.
3. REINFORCEMENT PARTIALLY EMBEDDED IN CONCRETE SHALL NOT BE FIELD BENT.

HELIX ANCHOR NOTES:

1. FOR VERY DENSE AND/OR CEMENTED SANDS, COARSE GRAVEL AND COBBLES, CALICHE, PRELOADED SILTS AND CLAYS, USE MINIMUM (2) 4" HELICES WITH MINIMUM 30" EMBEDMENT OR SINGLE 6" HELIX WITH MINIMUM 50" EMBEDMENT.
2. FOR CORAL USE MINIMUM (2) 4" HELICES WITH MINIMUM 30" EMBEDMENT OR SINGLE 6" HELIX WITH MINIMUM 50" EMBEDMENT.
3. FOR MEDIUM DENSE COARSE SANDS, SANDY GRAVELS, VERY STIFF SILTS, AND CLAYS USE MINIMUM (2) 4" HELICES WITH MINIMUM 30 INCH EMBEDMENT OR SINGLE 6" HELIX WITH MINIMUM 50" EMBEDMENT.
4. FOR LOOSE TO MEDIUM DENSE SANDS, FIRM TO STIFF CLAYS AND SILTS ALLUVIAL FILL, USE MINIMUM (2) 6" HELICES WITH MINIMUM 50" EMBEDMENT.
5. FOR VERY LOOSE TO MEDIUM DENSE SANDS, FIRM TO STIFFER CLAYS AND SILTS, ALLUVIAL FILL, USE MINIMUM (2) 8" HELICES WITH MINIMUM 60" EMBEDMENT.

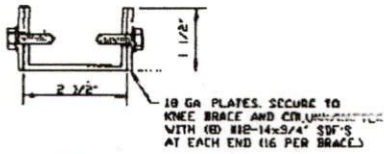
MOORE AND ASSOCIATES ENGINEERING AND CONSULTING, INC.	DRAWN BY: AT	QUALITY COMMERCIAL STRUCTURES / A PLUS P.O. BOX 1448 PILOT MOUNTAIN, NC 27041 30'x16' ENCLOSED BUILDING		
	CHECKED BY: PM			
THIS DOCUMENT IS THE PROPERTY OF MOORE AND ASSOCIATES ENGINEERING AND CONSULTING, INC. GENERAL TERMS: THE UNAUTHORIZED REPRODUCTION, COPIING, OR DISTRIBUTION OF THIS DOCUMENT IS STRICTLY PROHIBITED AND ANY INFRINGEMENT THEREOF MAY BE SUBJECT TO LEGAL ACTION.	PROJECT: NEW LHM	DATE: 1-21-10	SCALE: NTS	JOB NO: 177700
	CLIENT: QUALITY/A PLUS	SHEET: 6	DWG. NO: SK-3	REV: 0



**BOW EAVE RAFTER COLUMN CONNECTION
DETAIL FOR HEIGHTS $\leq 10'$ -0"**

1D

SCALE: NTS



**BRACE SECTION
SCALE: NTS**

**MOORE AND ASSOCIATES
ENGINEERING AND CONSULTING, INC.**

DRAWN BY: AT

CHECKED BY: [blank]

DATE: [blank]

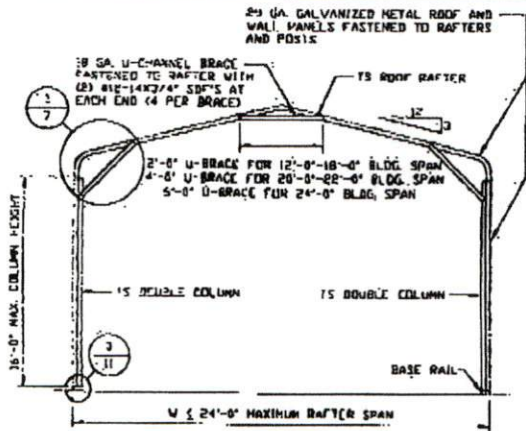
QUALITY CONTROLLED AND APPROVED FOR CONSTRUCTION
P.O. BOX 1448
PILGRIM INDUSTRIES, INC.
36x48 ENCLOSED BUILDING

SCALE: NTS

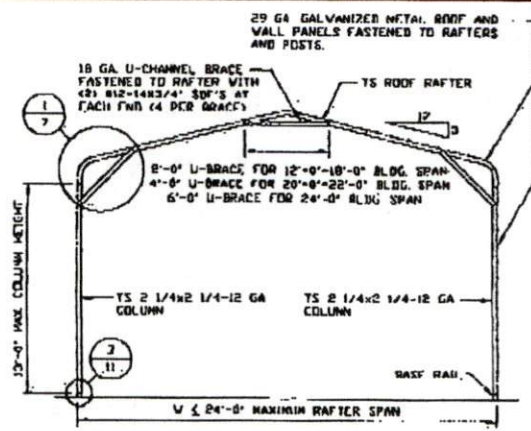
JOB NO. 172755

DATE: [blank]

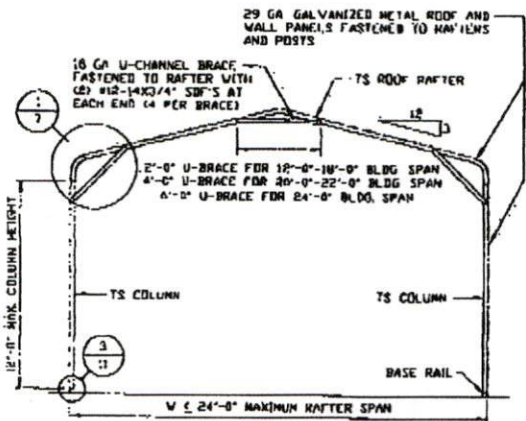
REV: 0



TYPICAL RAFTER/COLUMN END FRAME SECTION
SCALE: NTS



TYPICAL RAFTER/COLUMN END FRAME SECTION
SCALE: NTS



TYPICAL RAFTER/COLUMN END FRAME SECTION
SCALE: NTS

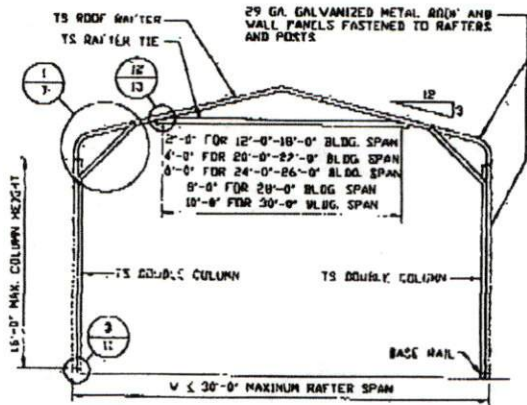
**MOORE AND ASSOCIATES
ENGINEERING AND CONSULTING, INC.**

DRAWN BY: AT
CHECKED BY: PBN

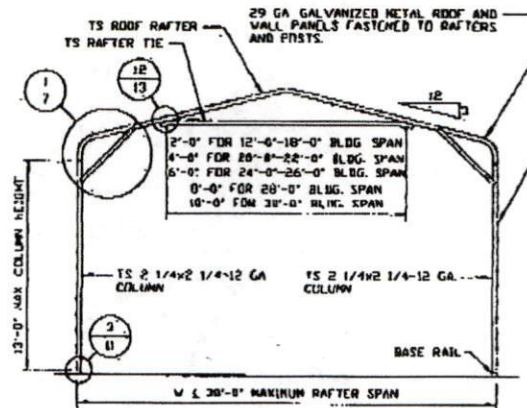
QUALITY COMMERCIAL STRUCTURES / A PLUS
P.O. BOX 1448
PILOT MOUNTAIN, NC 27041
30'x16' ENCLOSED BUILDING

THIS DOCUMENT IS THE PROPERTY OF MOORE AND ASSOCIATES ENGINEERING AND CONSULTING. THE UNAUTHORIZED REPRODUCTION, COPYING, OR OTHERWISE USE OF THIS DOCUMENT IS STRICTLY PROHIBITED AND ANY INFRACTION THEREUPON MAY BE SUBJECT TO LEGAL ACTION.

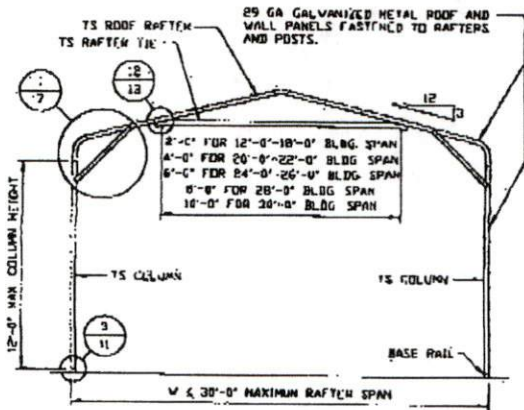
PROJECT NO: VSM	DATE: 1-24-10	SCALE: NTS	JOB NO: 172755
CLIENT: QUALITY/A PLUS	SHT. 5A	DWG. NO: SK-3	REV. 0



TYPICAL RAFTER/COLUMN END FRAME SECTION
SCALE: NTS



TYPICAL RAFTER/COLUMN END FRAME SECTION
SCALE: NTS



TYPICAL RAFTER/COLUMN END FRAME SECTION
SCALE: NTS

**MOORE AND ASSOCIATES
ENGINEERING AND CONSULTING, INC.**

DRAWN BY: AT

CHECKED BY: PBM

PROJECT NO: VSN

CLIENT: QUALITY/A PLUS

QUALITY COMMERCIAL STRUCTURES / A PLUS
P.O. BOX 1448
PILOT MOUNTAIN, NC 27041
30'x16' ENCLOSED BUILDING

DATE: 1-24-18

SCALE: NTS

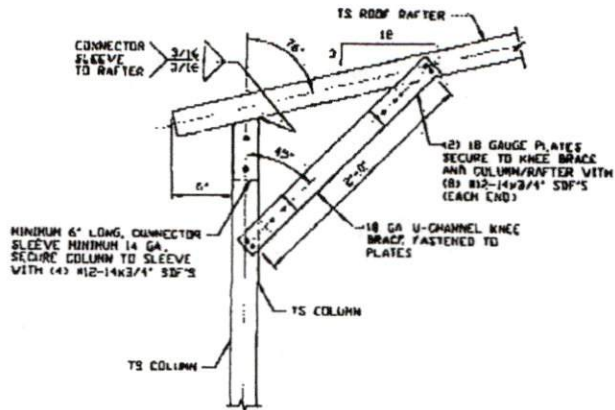
JOB NO: 17275S

SHT. 6

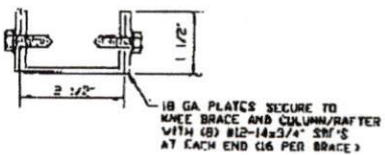
DWG NO: SK-3

REV: 0

THIS DOCUMENT IS THE PROPERTY OF MOORE AND ASSOCIATES ENGINEERING AND CONSULTING. THE UNAUTHORIZED REPRODUCTION, COPYING, OR OTHERWISE USE OF THIS DOCUMENT IS STRICTLY PROHIBITED AND ANY INFRINGEMENT THEREUPON MAY BE SUBJECT TO LEGAL ACTION.



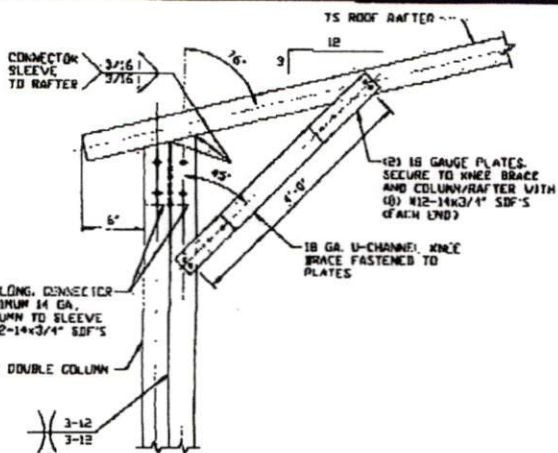
1H BOX EAVE RAFTER COLUMN CONNECTION
 SCALE: NTS



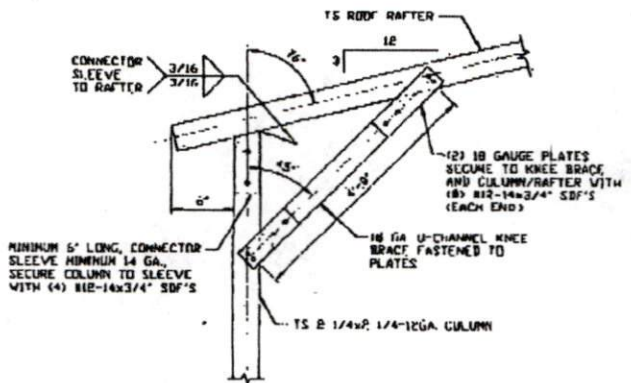
BRACE SECTION
 SCALE: NTS

MOORE AND ASSOCIATES ENGINEERING AND CONSULTING, INC.	QUALITY COMMERCIAL STRUCTURES / A PLUS P.O. BOX 1448 PILOT MOUNTAIN, NC 27041 30'x16' ENCLOSED BUILDING			
	DRAWN BY: AT CHECKER BY: PHN	PROJECT: HSD VSM CLIENT: QUALITY/A PLUS	DATE: 1-24-18 SHT. 5C	SCALE: NTS DWG. NO: SK-3

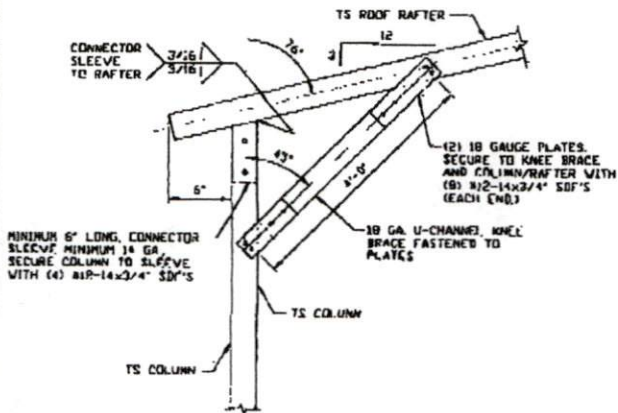
THIS DOCUMENT IS THE PROPERTY OF MOORE AND ASSOCIATES ENGINEERING AND CONSULTING. THE UNAUTHORIZED REPRODUCTION, COPYING, OR OTHERWISE USE OF THIS DOCUMENT IS STRICTLY PROHIBITED AND ANY INFREMENT THEREUPON MAY BE SUBJECT TO LEGAL ACTION.



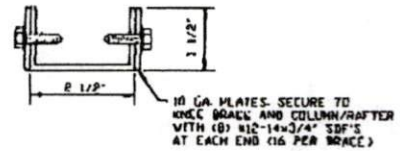
1E BOX EAVE RAFTER COLUMN CONNECTION
 DETAIL FOR HEIGHTS 13'-0" < TO ≤ 16'-0"
 SCALE: NTS



1F BOX EAVE RAFTER COLUMN CONNECTION
 DETAIL FOR HEIGHTS 12'-0" < TO ≤ 13'-0"
 SCALE: NTS



1G BOX EAVE RAFTER COLUMN CONNECTION
 DETAIL FOR HEIGHTS 10'-0" < TO ≤ 12'-0"
 SCALE: NTS



BRACE SECTION
 SCALE: NTS

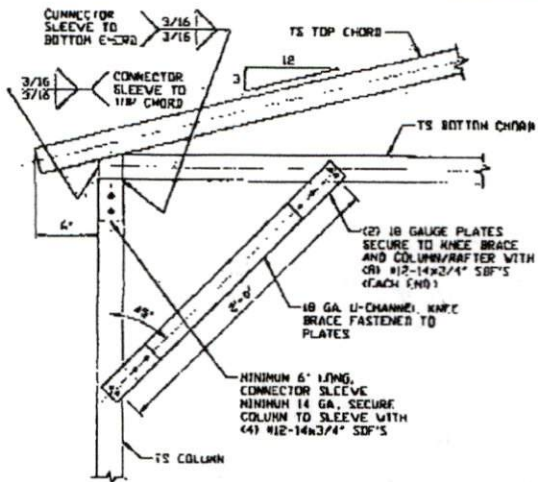
**MOORE AND ASSOCIATES
 ENGINEERING AND CONSULTING, INC.**

DRAWN BY: AT
 CHECKED BY: PDM

QUALITY COMMERCIAL STRUCTURES / A PLUS
 P.O. BOX 1448
 PILOT MOUNTAIN, NC 27041
 30'x16' ENCLOSED BUILDING

THIS DOCUMENT IS THE PROPERTY OF MOORE AND ASSOCIATES ENGINEERING AND CONSULTING. THE UNAUTHORIZED REPRODUCTION, COPYING, OR OTHERWISE USE OF THIS DOCUMENT IS STRICTLY PROHIBITED AND ANY INFRINGEMENT THEREUPON MAY BE SUBJECT TO LEGAL ACTION.

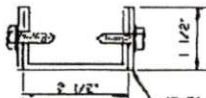
PROJECT NGR VSM DATE 1-24-10 SCALE: NTS JOB NO (727)SS
 CLIENT: QUALITY/A PLUS SHT. 3B DWG. NO SK-3 REV. 0



**BOX EAVE RAFTER COLUMN
CONNECTION DETAIL FOR
HEIGHTS $\leq 10'-0"$**

1D

SCALE: NTS



18 GA PLATES, SECURE TO
KNEE BRACE AND COLUMN/RAFTER
WITH (8) #12-14x3/4\"/>

BRACE SECTION

SCALE: NTS

**MOORE AND ASSOCIATES
ENGINEERING AND CONSULTING, INC.**

DRAWN BY: AT

CHECKED BY: PDH

PROJECT NO: WSM

CLIENT: QUALITY/A PLUS

**QUALITY COMMERCIAL STRUCTURES/A PLUS
P.O. BOX 1448
PILLOT MOUNTAIN, NC 27041
30'x16' ENCLOSED BUILDING**

DATE: 1-24-19

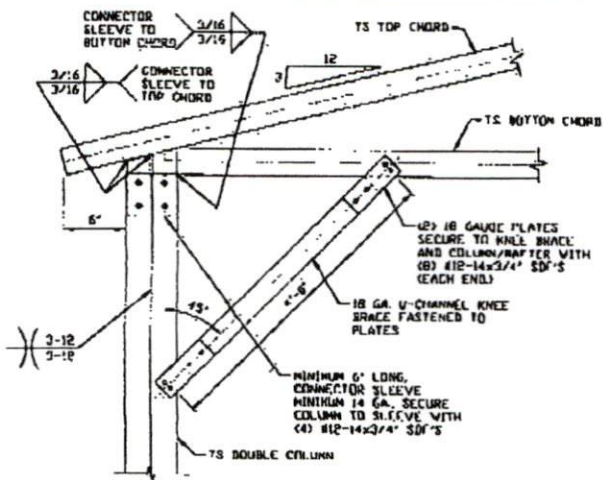
SCALE: NTS

DWG. NO: 172755

DWG. NO: SK-3

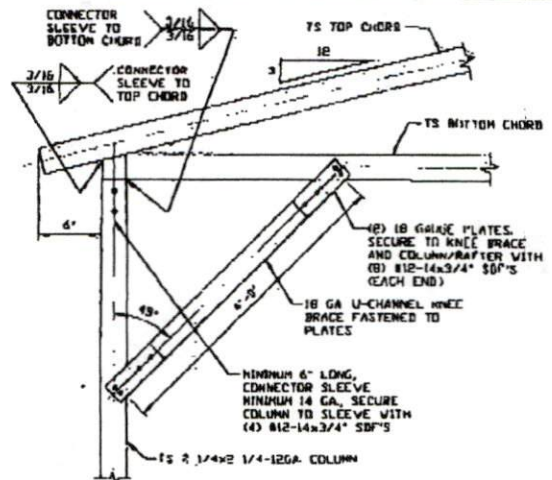
REV: 0

THIS DOCUMENT IS THE PROPERTY OF MOORE AND ASSOCIATES ENGINEERING AND CONSULTING, INC. UNAUTHORIZED REPRODUCTION, COPYING, OR OTHERWISE USE OF THIS DOCUMENT IS STRICTLY PROHIBITED AND ANY INFRACTION THEREUPON MAY BE SUBJECT TO LEGAL ACTION.



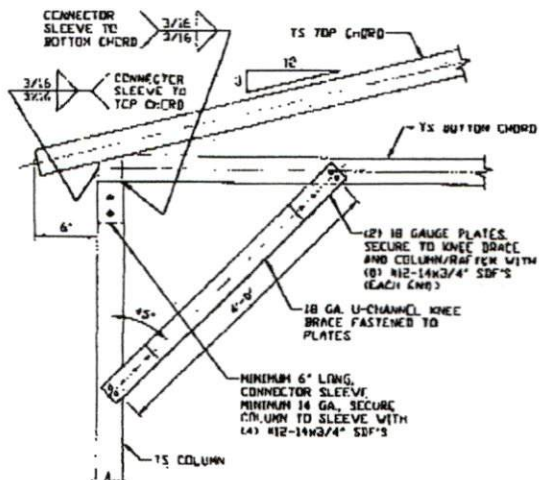
1A BOX EAVE RAFTER COLUMN CONNECTION DETAIL FOR HEIGHTS 13'-0" < TO < 16'-0"

SCALE: NTS



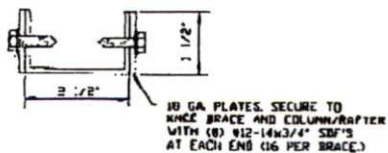
1B BOX EAVE RAFTER COLUMN CONNECTION DETAIL FOR HEIGHTS 12'-0" < TO < 13'-0"

SCALE: NTS



1C BOX EAVE RAFTER COLUMN CONNECTION DETAIL FOR HEIGHTS 10'-0" < TO < 12'-0"

SCALE: NTS



BRACE SECTION
SCALE: NTS

**MOORE AND ASSOCIATES
ENGINEERING AND CONSULTING, INC.**

DRAWN BY: AT

CHECKED BY: PMH

PROJECT MGR: WSM

CLIENT: QUALITY/A PLUS

QUALITY COMMERCIAL STRUCTURES / A PLUS
P.O. BOX 1448
PILOT MOUNTAIN, NC 27041
30'x16' ENCLOSED BUILDING

DATE: 1-24-19

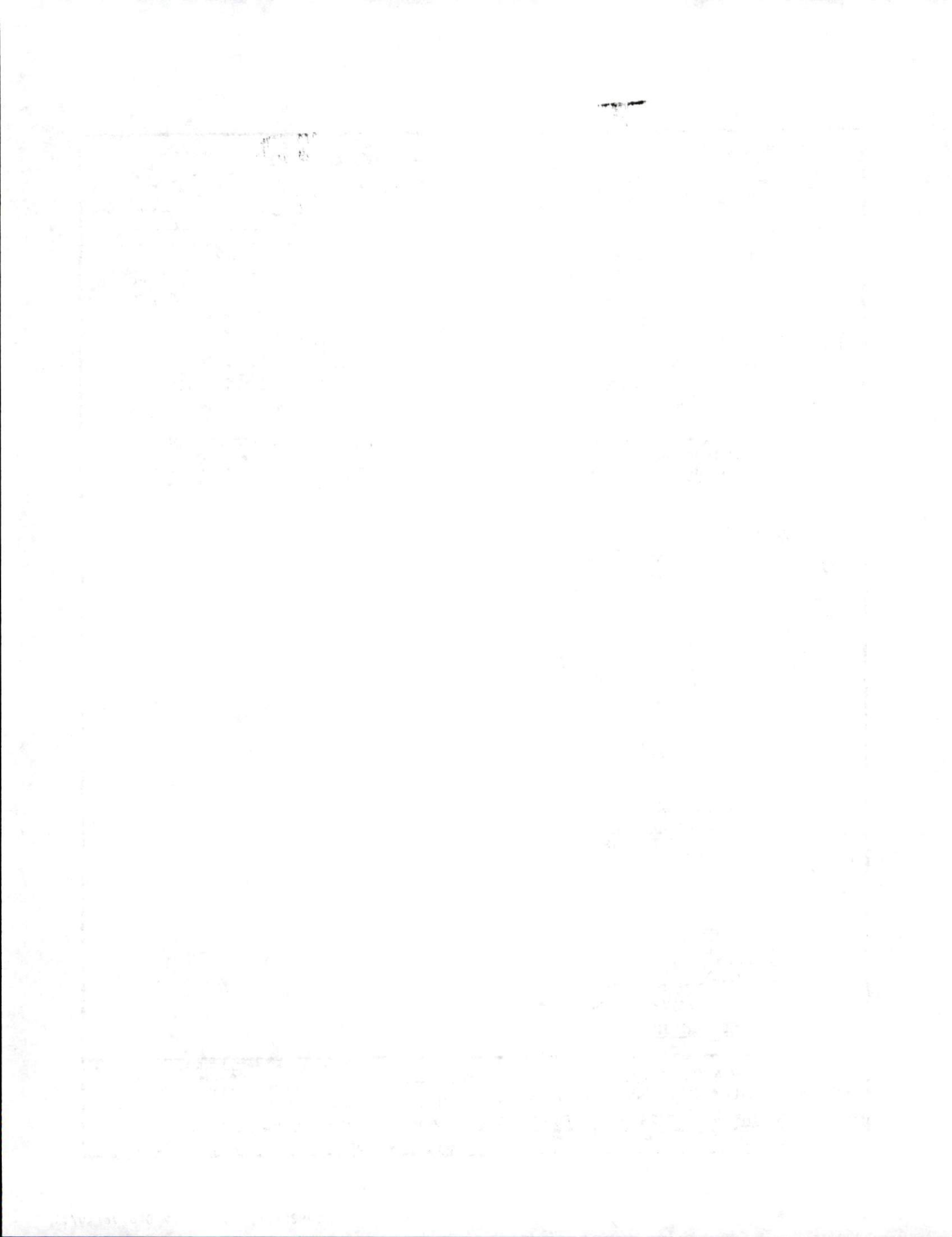
SCALE: NTS

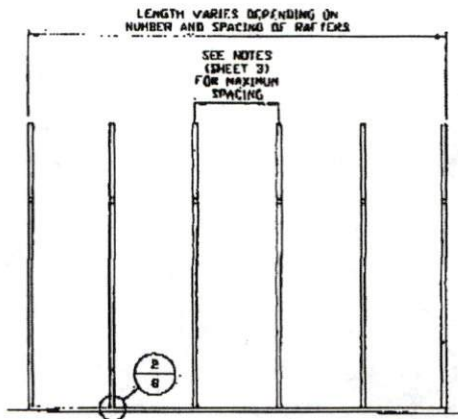
JOB NO: 172733

SHT. 5

IMG. NO: SK-3

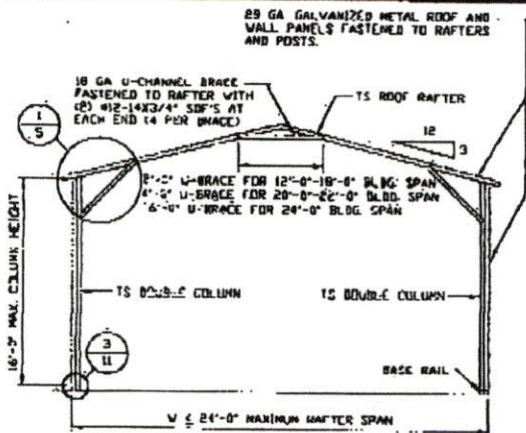
REV: 0



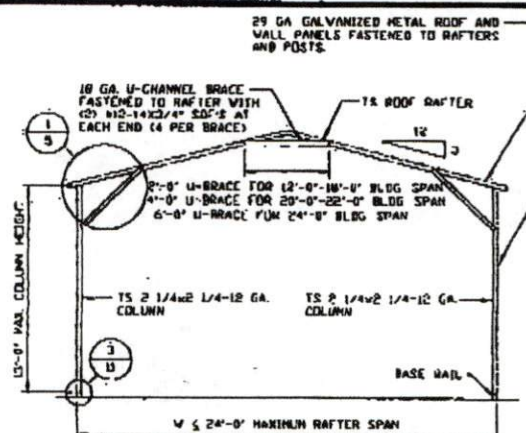


TYPICAL RAFTER/COLUMN SIDE FRAMING SECTION
SCALE: NTS

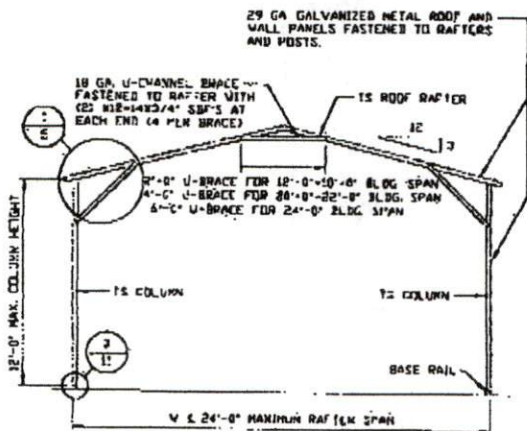
MOORE AND ASSOCIATES ENGINEERING AND CONSULTING, INC.	DRAWN BY: AT		QUALITY COMMERCIAL STRUCTURES / A PLUS P.O. BOX 1448 PILOT MOUNTAIN, NC 27041 30'x16' ENCLOSED BUILDING	
	CHECKED BY: PZH			
THIS DOCUMENT IS THE PROPERTY OF MOORE AND ASSOCIATES ENGINEERING AND CONSULTING. THE UNAUTHORIZED REPRODUCTION, COPYING, OR OTHERWISE USE OF THIS DOCUMENT IS STRICTLY PROHIBITED AND ANY INFINGEMENT THEREUPON MAY BE SUBJECT TO LEGAL ACTION.	PROJECT NO: W30	DATE: 1-24-12	SCALE: NTS	JOB NO: 172755
	CLIENT: QUALITY/A PLUS	SHT. 4C	DWG. NO: SK-3	REV: 0



TYPICAL RAFTER/COLUMN END FRAME SECTION
SCALE: NTS



TYPICAL RAFTER/COLUMN END FRAME SECTION
SCALE: NTS



TYPICAL RAFTER/COLUMN END FRAME SECTION
SCALE: NTS

MOORE AND ASSOCIATES ENGINEERING AND CONSULTING, INC.	QUALITY COMMERCIAL STRUCTURES / A PLUS P.O. BOX 1448 PILOT MOUNTAIN, NC 27041 30'x16' ENCLOSED BUILDING		
	DRAWN BY: AT CHECKED BY: PDM	PROJECT: NGR VSM CLIENT: QUALITY/A PLUS	DATE: 1-24-18 SHT. 48

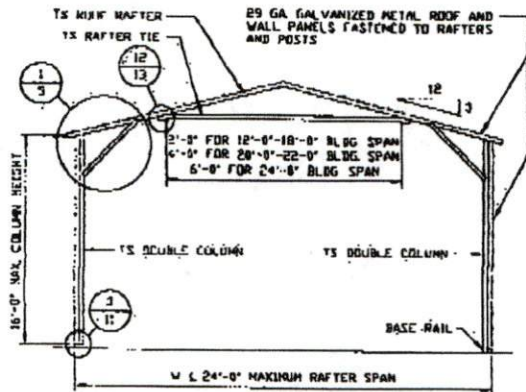
THIS DOCUMENT IS THE PROPERTY OF MOORE AND ASSOCIATES ENGINEERING AND CONSULTING. THE UNAUTHORIZED REPRODUCTION, COPYING, OR OTHERWISE USE OF THIS DOCUMENT IS STRICTLY PROHIBITED AND ANY INFRINGEMENT THEREUPON MAY BE SUBJECT TO LEGAL ACTION.

1. The first part of the report is a general introduction to the project. It describes the objectives of the study and the methods used to collect and analyze the data.

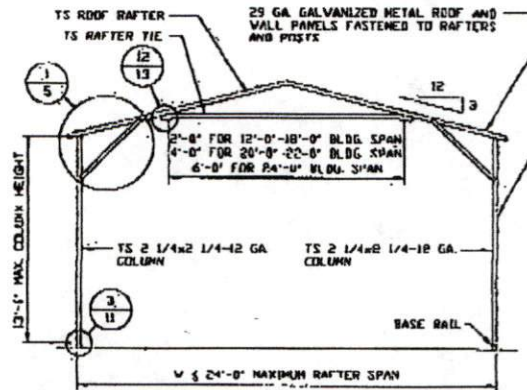
2. The second part of the report is a detailed description of the data. It includes a table of the data and a discussion of the characteristics of the data.

3. The third part of the report is a discussion of the results. It compares the results of the study with the results of other studies and discusses the implications of the findings.

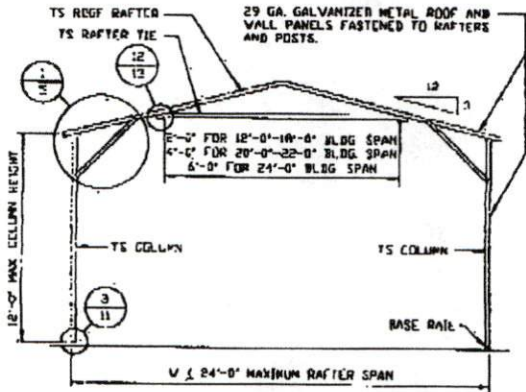
4. The fourth part of the report is a conclusion. It summarizes the main findings of the study and provides recommendations for future research.



TYPICAL RAFTER/COLUMN END FRAME SECTION
SCALE: NTS

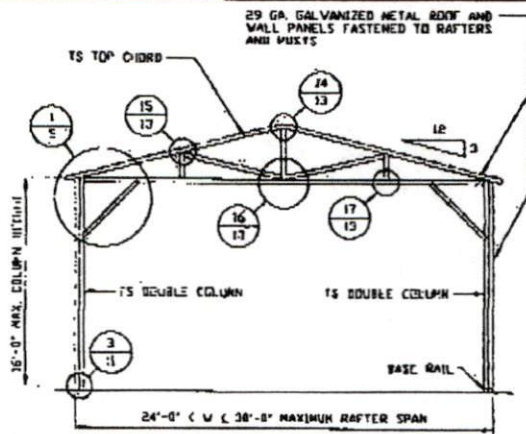


TYPICAL RAFTER/COLUMN END FRAME SECTION
SCALE: NTS

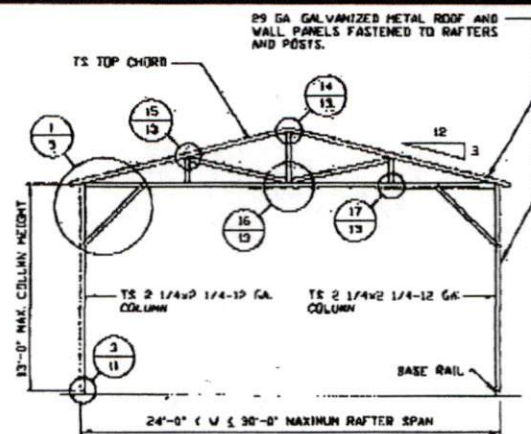


TYPICAL RAFTER/COLUMN END FRAME SECTION
SCALE: NTS

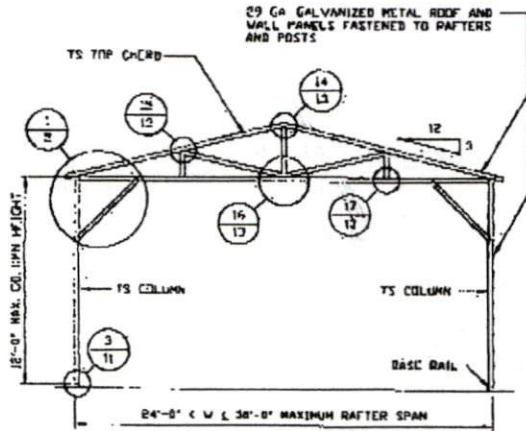
MOORE AND ASSOCIATES ENGINEERING AND CONSULTING, INC.	DRAWN BY: AT		QUALITY COMMERCIAL STRUCTURES / A PLUS P.O. BOX 1448 PILOT MOUNTAIN, NC 27011 30'x16' ENCLOSED BUILDING	
	CHECKED BY: PMH			
THIS DOCUMENT IS THE PROPERTY OF MOORE AND ASSOCIATES ENGINEERING AND CONSULTING. THE UNAUTHORIZED REPRODUCTION, COPYING, OR OTHERWISE USE OF THIS DOCUMENT IS STRICTLY PROHIBITED AND ANY INFRINGEMENT THEREUPON MAY BE SUBJECT TO LEGAL ACTION.	PROJECT NO: WSM	DATED: 1-24-18	SCALE: NTS	JOB NO: 178799
	CLIENT: QUALITY/A PLUS	SMT. 4A	DWG. NO: SK-3	REV: 0



TYPICAL RAFTER/COLUMN END FRAME SECTION
SCALE: NTS



TYPICAL RAFTER/COLUMN END FRAME SECTION
SCALE: NTS



TYPICAL RAFTER/COLUMN END FRAME SECTION
SCALE: NTS

**MOORE AND ASSOCIATES
ENGINEERING AND CONSULTING, INC.**

DRAWN BY: AT

CHECKED BY: PJM

PROJECT NO: VSM

CLIENT: QUALITY/A PLUS

QUALITY COMMERCIAL STRUCTURES / A PLUS
P.O. BOX 1448
PILOT MOUNTAIN, NC 27041
30'x16' ENCLOSED BUILDING

DATE: 1-24-18

SCALE: NTS

JOB NO: 172732

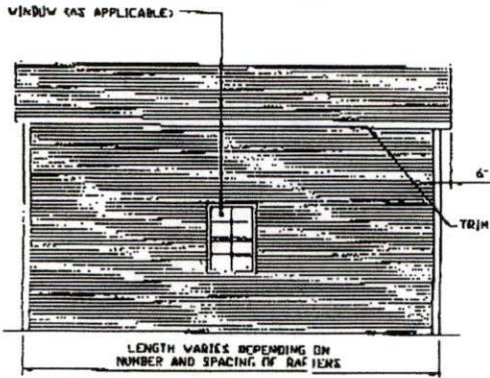
SHT. 4

DWG NO: SK-3

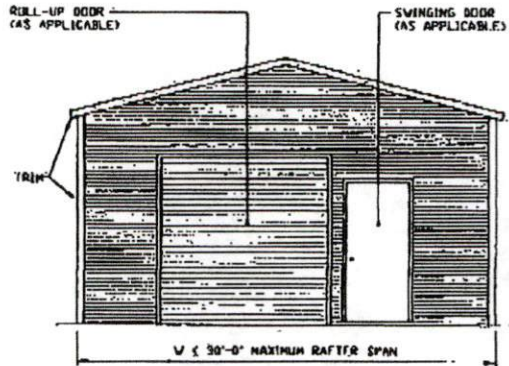
REV: 0

THIS DOCUMENT IS THE PROPERTY OF MOORE AND ASSOCIATES ENGINEERING AND CONSULTING. THE UNAUTHORIZED REPRODUCTION, COPYING, OR OTHERWISE USE OF THIS DOCUMENT IS STRICTLY PROHIBITED AND ANY INFRINGEMENT THEREUPON MAY BE SUBJECT TO LEGAL ACTION.

BOX EAVE FRAME RAFTER STRUCTURE

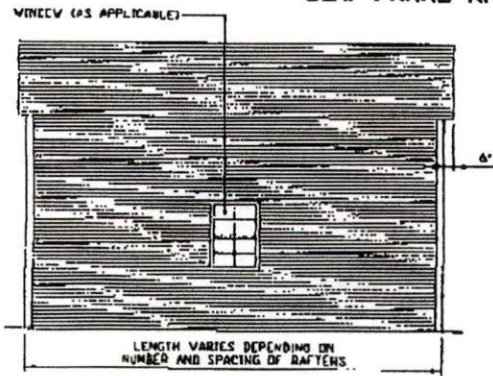


TYPICAL SIDE ELEVATION
SCALE: NTS

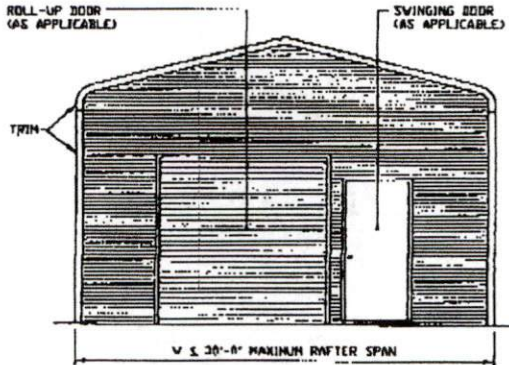


TYPICAL END ELEVATION
SCALE: NTS

BOX FRAME RAFTER STRUCTURE



TYPICAL SIDE ELEVATION
SCALE: NTS



TYPICAL END ELEVATION
SCALE: NTS

**MOORE AND ASSOCIATES
ENGINEERING AND CONSULTING, INC.**

DRAWN BY: AT		QUALITY COMMERCIAL STRUCTURES / A PLUS	
CHECKED BY: PM		P.O. BOX 1448	
PROJECT NO: WSM		PILOT MOUNTAIN, NC 27041	
CLIENT: QUALITY/A PLUS		30'x16' ENCLOSED BUILDING	
DATE: 1-24-10	SCALE: NTS	JOB NO: 178793	
SHT. 3A	DWG. NO SK-3	REV. 0	

THIS DOCUMENT IS THE PROPERTY OF MOORE AND ASSOCIATES ENGINEERING AND CONSULTING, INC. UNAUTHORIZED REPRODUCTION, COPYING, OR OTHERWISE USE OF THIS DOCUMENT IS STRICTLY PROHIBITED AND ANY INFRINGEMENT THEREUPON MAY BE SUBJECT TO LEGAL ACTION.

INSTALLATION NOTES AND SPECIFICATIONS

1. DESIGN IS FOR MAXIMUM 30'-0" WIDE x 16'-0" EAVE HEIGHT ENCLOSED STRUCTURES.
2. DESIGN WAS DONE IN ACCORDANCE WITH THE 2012 NORTH CAROLINA BUILDING CODE, 2009 INTERNATIONAL BUILDING CODE (IBC), 2012 IBC, AND THE 2015 IBC.
3. DESIGN LOADS ARE AS FOLLOWS:
 - A) DEAD LOAD = 1.5 PSF
 - B) LIVE LOAD = 12 PSF
 - C) GROUND SNOW LOAD = 35 PSF (GROUND SNOW LOAD = 45 PSF FOR RAFTER/POST SPACING = 4.0 FEET.)
= 30 PSF WITH U-CHANNEL PEAK BRACE (W ≤ 24'-0")
4. 3-SECOND GUST ULTIMATE WIND SPEED (V_{ULT}) 105 TO 145 MPH (NOMINAL WIND SPEED 81 TO 112 MPH).
5. MAXIMUM RAFTER/POST AND END POST SPACING = 5.0 FEET.
6. RISK CATEGORY I.
7. WIND EXPOSURE CATEGORY II.
8. SPECIFICATIONS APPLICABLE TO 29 GAUGE METAL PANELS FASTENED DIRECTLY TO 2 1/2" x 2 1/2" - 14 GAUGE TUBE STEEL (TS) FRAMING MEMBERS (UNLESS NOTED OTHERWISE.)
9. AVERAGE FASTENER SPACING UN-CENTERS ALONG RAFTERS OR HAT CHANNELS, AND COLUMNS (INTERIOR OR END) = 10" O.C. (MAX.)
10. FASTENERS CONSIST OF #12-14x3/4" SELF-DRILLING FASTENER (SDF), USE CONTROL SEAL WASHER WITH EXTERIOR FASTENERS. SPECIFICATIONS APPLICABLE ONLY FOR MEAN ROOF HEIGHT OF 20 FEET OR LESS, AND ROOF SLOPES OF 14" (3:12 PITCH) OR LESS SPACING REQUIREMENTS FOR OTHER ROOF HEIGHTS AND/OR SLOPES MAY VARY.
11. GROUND ANCHORS SHALL BE INSTALLED THROUGH BASE RAIL WITHIN 6" OF EACH RAFTER COLUMN ALONG SIDES.
12. GROUND ANCHORS CONSIST OF #4 REBAR w/ WELDED NUT x 36" LONG IN SUITABLE SOIL CONDITIONS. OPTIONAL ANCHORAGE MAY BE USED IN SUITABLE SOILS AND MUST BE USED IN UNSUITABLE SOILS AS NOTED.
13. WIND FORCES GOVERN OVER SEISMIC FORCES. SEISMIC PARAMETERS ANALYZED ARE:
 SOIL SITE CLASS = D
 RISK CATEGORY I/II/III
 $R = 3.25$ $I_e = 1.0$
 $S_{ps} = 1.522$ $V = C_s W$
 $S_{SI} = 0.839$

MOORE AND ASSOCIATES ENGINEERING AND CONSULTING, INC.	DRAWN BY: AT	QUALITY COMMERCIAL STRUCTURES / A PLUS P.O. BOX 1448 PILOT MOUNTAIN, NC 27041 30'x16' ENCLOSED BUILDING		
	CHECKED BY: PJM			
THIS DOCUMENT IS THE PROPERTY OF MOORE AND ASSOCIATES ENGINEERING AND CONSULTING, INC. UNAUTHORIZED REPRODUCTION, COPYING, OR OTHERWISE USE OF THIS DOCUMENT IS STRICTLY PROHIBITED AND ANY DEVIATION THEREOF MAY BE SUBJECT TO LEGAL ACTION.	PROJECT NO: VSM	DATE: 1-24-18	SCALE: NTS	JOB NO: 178795
	CLIENT: QUALITY/A PLUS	SHT. 3	DWG. NO: SK-3	REV: 0

DRAWING INDEX

SHEET 1	PE SEAL COVER SHEET (1 OF 2)
SHEET 1A	PE SEAL COVER SHEET (2 OF 2)
SHEET 2	DRAWING INDEX
SHEET 3	INSTALLATION NOTES AND SPECIFICATIONS
SHEET 3A	TYPICAL SIDE AND END ELEVATIONS
SHEET 4	TYPICAL RAFTER/COLUMN END FRAMING SECTION (BOX EAVE RAFTER)
SHEET 4A	TYPICAL RAFTER/COLUMN END FRAMING SECTION (BOX EAVE RAFTER)
SHEET 4B	TYPICAL RAFTER/COLUMN END FRAMING SECTION (BOX EAVE RAFTER)
SHEET 4C	TYPICAL RAFTER/COLUMN END FRAMING SECTION (BOX EAVE RAFTER)
SHEET 5	COLUMN CONNECTION DETAILS (BOX EAVE STRUCTURE)
SHEET 5A	COLUMN CONNECTION DETAILS (BOX EAVE STRUCTURE)
SHEET 5B	COLUMN CONNECTION DETAILS (BOX EAVE STRUCTURE)
SHEET 5C	COLUMN CONNECTION DETAILS (BOX EAVE STRUCTURE)
SHEET 6	TYPICAL RAFTER/COLUMN END FRAMING SECTION (BOW RAFTER)
SHEET 6A	TYPICAL RAFTER/COLUMN END FRAMING SECTION (BOW RAFTER)
SHEET 6B	TYPICAL RAFTER/COLUMN SIDE FRAMING SECTION (BOW RAFTER)
SHEET 7	COLUMN CONNECTION DETAILS (BOW RAFTER STRUCTURE)
SHEET 7A	COLUMN CONNECTION DETAILS (BOW RAFTER STRUCTURE)
SHEET 8	BASE RAIL ANCHORAGE OPTIONS
SHEET 8A	BASE RAIL ANCHORAGE OPTIONS
SHEET 8B	BASE RAIL ANCHORAGE OPTIONS
SHEET 9	TYPICAL END WALL AND SIDE WALL FRAMING SECTIONS (BOX EAVE)
SHEET 10	TYPICAL END WALL AND SIDE WALL FRAMING SECTIONS (BOW RAFTER)
SHEET 11	CONNECTION DETAILS
SHEET 12	CONNECTION DETAILS
SHEET 13	CONNECTION DETAILS
SHEET 14	LEAN-TO OPTIONS (BOX EAVE RAFTER)
SHEET 14A	LEAN-TO OPTIONS (BOX EAVE RAFTER)
SHEET 15	LEAN-TO OPTIONS (BOW RAFTER)
SHEET 16	VERTICAL ROOF OPTION END AND SIDE ELEVATION AND SECTION
SHEET 17	HEADER OPTION

MOORE AND ASSOCIATES ENGINEERING AND CONSULTING, INC.	DRAWN BY: AT	QUALITY COMMERCIAL STRUCTURES / A PLUS P.O. BOX 1448 PILOT MOUNTAIN, NC 27041 30x16' ENCLOSED BUILDING		
	CHECKED BY: PJM	PROJECT: MGR WSN	DATE: 1-24-18	SCALE: NTS
THIS DOCUMENT IS THE PROPERTY OF MOORE AND ASSOCIATES ENGINEERING AND CONSULTING. THE UNAUTHORIZED REPRODUCTION, COPYING, OR OTHERWISE USE OF THIS DOCUMENT IS STRICTLY PROHIBITED AND ANY INFRACTION THEREUPON MAY BE SUBJECT TO LEGAL ACTION.	CLIENT: QUALITY/A PLUS	SHT. 2	DWG. NO: SK-3	REV. 0

MOORE AND ASSOCIATES ENGINEERING AND CONSULTING, INC.	DRAWN BY: AT		QUALITY COMMERCIAL STRUCTURES / A PLUS P.O. BOX 1448 PILOT MOUNTAIN, NC 27041 30'x16' ENCLOSED BUILDING	
	CHECKED BY: PMH			
THIS DOCUMENT IS THE PROPERTY OF MOORE AND ASSOCIATES ENGINEERING AND CONSULTING. THE UNAUTHORIZED REPRODUCTION, COPYING, OR OTHERWISE USE OF THIS DOCUMENT IS STRICTLY PROHIBITED AND ANY INFRINGEMENT THEREOF MAY BE SUBJECT TO LEGAL ACTION.	PROJECT NO: WSM	DATE: 1-24-10	SCALE: NTS	JOB NO: 172785
	CLIENT: QUALITY/A PLUS	SHT. 1A	DWG. NO: SK-3	REV: 0

MOORE AND ASSOCIATES ENGINEERING AND CONSULTING, INC.	DRAWN BY: AT		QUALITY COMMERCIAL STRUCTURES 7 A PLUS P.O. BOX 1448 PILOT MOUNTAIN, NC 27041 30'x16' ENCLOSED BUILDING		
	CHECKED BY: PBN				
THIS DOCUMENT IS THE PROPERTY OF MOORE AND ASSOCIATES ENGINEERING AND CONSULTING, INC. THE UNAUTHORIZED REPRODUCTION, COPYING, OR OTHERWISE USE OF THIS DOCUMENT IS STRICTLY PROHIBITED AND ANY INFRACTION THEREUPON MAY BE SUBJECT TO LEGAL ACTION.	PROJECT NO: VSM	DATE: 1-04-16	SCALE: NTS	JOB NO: 1727SS	
	CLIENT: QUALITY/A PLUS	SHT. 1	DWG. NO: SK-3	REV: 0	

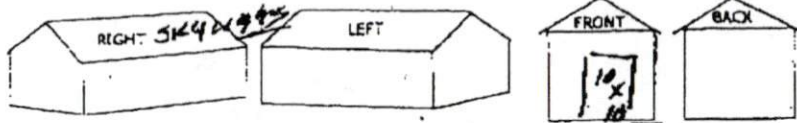


QUALITY COMMERCIAL STRUCTURES, LLC.

PO Box 1448 Pilot Mountain, NC 27041
336.368.8900 • Fax: 336.368.0512 • Fax: 336.368.0513
Email: management@qualitycommercialstructures.biz

Date 11-1-18

Dealer Name: MAC BUILDINGS - Lillington Dealer Phone: 910-984-1088 Representative: G. Stallings
Customer Name: COMPETITIVE CYCLES (TIM McNEIL) Customer email: _____
Street Address: 81 Hollies Drive Rd P.O. Work: _____ Note: 919-258-3620 Cell: 919-356-4426
City: BROADWAY ST: N.C. County: HARDETT Zip Code: 27505
Building Size: 24 X 51 X 11 VERTICALLY Post Height: 11 Color Selected: TOP WHITE SIDES WHITE TRIM HORIZONTAL



Mark locations of doors on drawings to avoid confusion at installation.
Baseraill is 1' Shorter Than Overall Length. Length includes 6" Overhang at Top.

YOU MUST CIRCLE ONE

DESCRIPTION	QUANTITY	SIZE	PRICE
TYPE / SIZE SELECTED <input type="checkbox"/> 2 X 3 COMMERCIAL GRADE	<u>24 X 51</u>	<u>VERTICAL</u>	
SIDES OF EXTRA METAL 2 X 3 SIDES @ \$5.00 PER SQ. FT.	<u>ENCLOSED</u>		
POST HEIGHT - Side Posts	<u>11 FT.</u>		
FRONT ENCLOSED 2 X 3 ENDS @ \$5.00 PER SQ. FT.	<u>YES</u>		
BACK ENCLOSED 2 X 3 ENDS @ \$5.00 PER SQ. FT.	<u>YES</u>		
GABLE END	<u>---</u>		
ROLL-UP *NO WARRANTY - DOORS HAVE CAPS AND ARE ONLY SEAL AT THE BOTTOM	<u>10 X 10</u>		
OR FRAME CUTS (3/8" size)	<u>---</u>		
ENTRANCE DOORS - PRICE	<u>---</u>		
WINDOWS - PRICE	<u>---</u>		
VERTICAL ENDS AND SIDES	<u>---</u>		
CERTIFICATION IS EXTRA MATERIALS (NOT A PAPER OR WARRANTY)	<u>ACCEPTED</u>	<u>DECLINED</u>	
ADDITIONAL ROOF	<u>6 SKYLIGHTS 3 PER SIDE</u>		
2" X 10" X 25" STEEL	<u>VERTICAL</u>		
EXTRA BRACES	<u>---</u>		
EXTRA AUGER ANCHORS	<u>---</u>		
SIDE OPENINGS	<u>CUTTING INSULATION ALL</u>	<u>15.346</u>	
EXTRA LABOR FEES - DRAWINGS	<u>---</u>		

There is a 6" overhang at each end of Quality Commercial Structures, LLC buildings. Buildings are 1' shorter at the Bottom than at the Roof. If pouring concrete, we recommend it to be poured 1' shorter than size ordered to prevent water from entering between steel base rails and concrete pad.

ALL ORDERS ARE C.O.D.	
COST	<u>15,346.00</u>
TAX <u>7.0 %</u>	<u>1,074.22</u>
TOTAL DUE	<u>16,420.22</u>
DOWN PAYMENT <small>DO NOT PAY IN FULL AT TIME OF ORDER</small>	<u>2,300.00</u>
SHIPPING <small>(Items Under \$700)</small>	<u>\$50.</u>
CREDIT CARD PAYMENTS 3% PROCESSING FEE	<u>---</u>
CHECK FOR: <small>BALANCE DUE UPON DELIVERY AND TO INSTALLERS</small>	<u>14,120.22</u>

ARE YOU READY?

YES NO

ELECTRICITY AVAILABLE?

YES NO

IS YOUR GROUND LEVEL?

YES NO

TYPE FOUNDATION

GROUND WOOD

GRAVEL OTHER

CONCRETE

Things You Should Know ...
Quality Commercial Structures, LLC will call customer 2-3 days ahead of your installation for scheduling. Customer or Dealer are not to call for an installation date. Scheduling and rescheduling usually takes 3-4 weeks. Holidays and bad weather will usually delay the process. Financing and rent to Own WILL delay the scheduling process. Customer is responsible for permits and assumes ALL responsibility for consent searches or restrictions. Customer must contact Quality Commercial Structures, LLC WITHIN 48 HOURS with ANY COMPLAINTS. Note, ALL WARRANTIES ARE void if building is altered.

Customer MUST provide a forklift at the location for structures over 12' tall and/or 26' in width AND for having roll up doors 12x12 or larger and MUST be available throughout the entire installation. Customer must mark cable or electrical lines before installation. Please mark off location where the structure is going before installers arrive. We WILL NOT be responsible for ANY damage including yards or pets.

Your site MUST be level within 4". If the ground is not level, you must have leveling blocks available for installers to use. Installation on blocks or loose dirt WILL void our warranties.

Quality Commercial Structures, LLC reserves the right to correct any errors. The customer agrees to allow QUALITY COMMERCIAL STRUCTURES, LLC to repossess ANY BUILDINGS THAT ARE NOT PAID FOR IN FULL UPON INSTALLATION.

There is a 10%-15% NON REFUNDABLE down payment due when the order is placed.

Customer also agrees to have a certified check or money order payable to QUALITY COMMERCIAL STRUCTURES, LLC (no cash payments please) and is to be given to installers upon installation. ALL CREDIT CARD PAYMENTS MUST BE PREPAID AND WILL BE CHARGED A 3% PROCESSING FEE. These prices DO NOT include grading, foundation preparation or concrete. A \$200.00 labor fee WILL be charged for extra labor including but not limited to, cutting posts to level foundation, materials carried to remote locations, up steep driveways or traveling around bees or bushes.

I have read this form in its entirety and completely understand the above information and give my approval for construction of the building and for the removal of the building IF it is not paid in full on installation.

Tim McNeil

Dealer G. Stallings

PO Box 1448 Phone: 336-368-8900
 Pilot Mt., NC 27041 Fax: 336-368-0513

025

Date 10-29-18

Dealer Name: MAC BUILDINGS - KILLING TOWN Phone: 910-984-1086 Representative: G STALLINGS
 Customer Name: DONALD WRENCH Customer Email: _____
 Street Address: 243 HLOYD STREET Rd City: BROADWAY State: N.C. County: HARNETT Zip: 27505
 Building Size: 24 X 51 X 9 VERTICAL Total Height: 9 FT Color: WHITE Trim: BLACK

There is a 6" overhang of each end of a Plus Carpents, LLC building. Buildings are 1" shorter at the bottom than at the roof.
 If pouring concrete, we recommend a 10' to 12' x 12' footer than size ordered to prevent water from entering between steel base rails and concrete pad.

Size 24x51x9			Size 24x51x9			Size 24x51x9		
Qty	Option	Price	Qty	Option	Price	Qty	Option	Price
	Base Price			Base Price	4190		Base Price	
	A-Frame	\$		A-Frame	\$		A-Frame	\$
	Vertical	\$		Vertical	\$ Yes		Vertical	\$
	Leg Height	\$		Leg Height	9 FT \$ 360		Leg Height	\$
	Sides	\$		Sides	\$ 110		Sides	\$
	Ends	\$		Ends	12x10-9x8 \$ 1720		Ends	\$
	Roll-Up	\$		Roll-Up	10x10-9x8 \$ 400		Roll-Up	\$
	Entry Door	\$		Entry Door	2 \$ 500		Entry Door	\$
	Windows	\$		Windows	\$		Windows	\$
	Frame Outs	\$		Leg Frame Outs	5x6 \$ 100		Frame Outs	\$
	Conn. Fee	\$ 100.00		Gap Coverage	\$ 250		Conn. Fee	\$ 100.00
	Certification	\$		Certification	\$ 600		Certification	\$
		\$		Extra <u>INSULATION</u>	\$ 1560			\$
	Total Left	\$		Total Center	\$ 11,290		Total Right	\$

ALL ORDERS ARE C.O.D.	
COST	11290
TAX 7.0%	790
TOTAL DUE	12080
DOWN PAYMENT	1700
SHIPPING	360
CREDIT CARD PAYMENTS	
3% PROCESSING FEE	
CHECK FOR:	10380

ARE YOU READY?
 YES NO
 FLEXIBILITY AVAILABLE?
 YES NO
 IS YOUR GROUND LEVEL?
 YES NO
 TYPE FOUNDATION
 GRAVEL WOOD
 GRAVEL OTHER
 CONCRETE

Things You Should Know ...

A Plus Carpents will call customer 2-3 days after all your installation or scheduling. Customer or Dealer are not to call for an installation date. Scheduling has reached end as my 10:30-11:30 AM. Holders and our website will notify you the process. Financing and other options will be available before process. Dealer is responsible for permits and all other. ALL responsibility for other not included or restrictions. Customer must contact A Plus Carpents at 910-984-1086 with ANY COMPANY. Note: All items are sold as building is shown.
 Customer MUST provide a 4' x 4' x 24" concrete pad for each end and 26" in width and 26" in length for each end. 12x12 or larger will MUST be provided for each end. Customer must be able to provide all other installation. Please read all instructions when the structure is going before installation. We WILL NOT be responsible for ANY damage or injury to you or your property.
 Your site MUST be level. 1" of the ground is not level, you must have leveling blocks provided. A 12x12 or larger will MUST be provided for each end. Installation on blocks or uneven will void our warranty.
 A Plus Carpents reserves the right to cancel any order. The customer agrees to allow A PLUS CARPENTS to remove ANY DEPOSITS THAT ARE NOT PAID FOR FULL UPON INSTALLATION.
 There is a 10% NON REFUNDABLE down payment on all buildings. 10-15%
 Customer also agrees to have a certified check or money order payable to A PLUS CARPENTS (no cash payments please) and to be over 18 if others use accounts. ALL CREDIT CARD PAYMENTS MUST BE PREPAID AND WILL BE CHARGED A 3% PROCESSING FEE. There is a 10% NON REFUNDABLE down payment on all buildings. A 12x12 or larger will MUST be provided for each end. Installation on blocks or uneven will void our warranty.
 I have read this form in its entirety and completely understand the above information and give my approval for construction of the building and for the removal of the building if it is not built in full on installation.

Customer: Donald W. Wrench Dealer: G. Stallings

5038176d-5267-42fd-a167-ae4286be1fd5DONALD WRENCH OF.jpg (850x1100)

11/1/2018

10 29 2018 11:13 AM

12/01/18