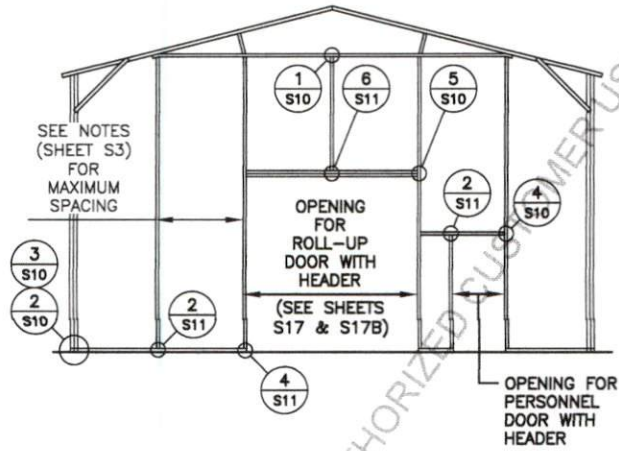


# TYPICAL END WALL FRAMING SECTION



**TAYLOR & VIOLA**  
STRUCTURAL ENGINEERS  
P.O.B. 2616 HICKORY NORTH CAROLINA  
TELE 828-328-6331 FAX 828-322-1901  
WWW.TAYLORVIOLA.COM

**FRONTLINE STEEL**  
**STRUCTURES, LLC**  
MT. AIRY, NORTH CAROLINA

**DRAWN BY:**  
BKS

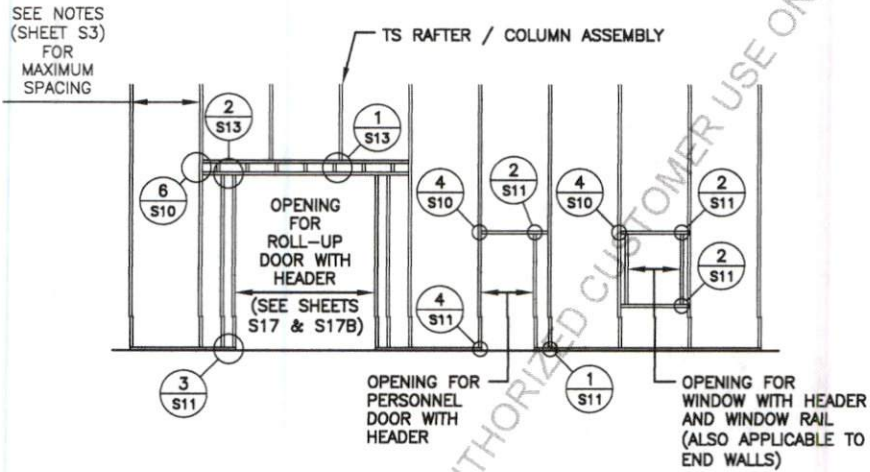
**PROJECT NO:**  
MISC

**DATE:**  
2023.05.12

**SHEET NO:**  
**S0A**

NOTE: THESE DRAWINGS ARE VALID FOR (1) CALENDER YEAR AFTER THE ISSUE DATE LISTED ON THIS SHEET.

# TYPICAL SIDE WALL OPENING FRAMING SECTION



## TYPICAL SIDE WALL OPENINGS FRAMING SECTION



**TAYLOR & VIOLA**  
STRUCTURAL ENGINEERS  
P.O.B. 2616 HICKORY NORTH CAROLINA  
TELE: 828-328-6331 FAX: 828-322-1801  
WWW.TAYLORVIOLA.COM

**FRONTLINE STEEL**  
**STRUCTURES, LLC**  
MT. AIRY, NORTH CAROLINA

DRAWN BY:  
BKS

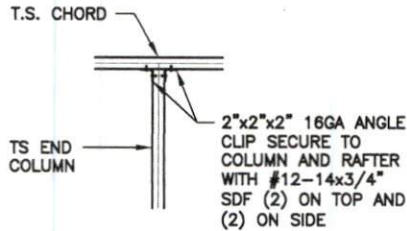
PROJECT NO:  
MISC

DATE:  
2023.05.12

SHEET NO:  
**S08**

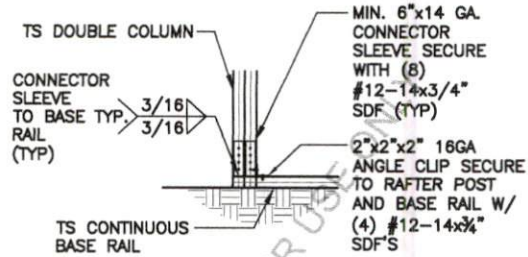
NOTE: THESE DRAWINGS ARE VALID FOR (1) CALENDER YEAR AFTER THE ISSUE DATE LISTED ON THIS SHEET.

# CONNECTION DETAILS



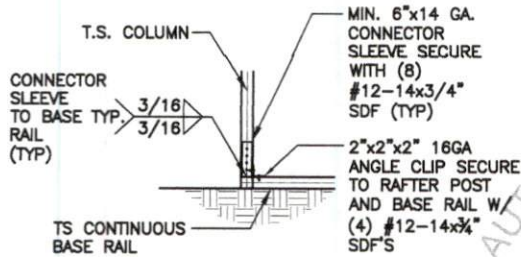
**1**  
S10  
BOTTOM CHORD  
CONNECTION DETAIL

SCALE: 1/2" = 1'-0"



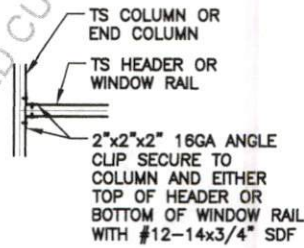
**2**  
S10  
COLUMN / BASE RAIL  
CONNECTION DETAIL

SCALE: 1/2" = 1'-0"



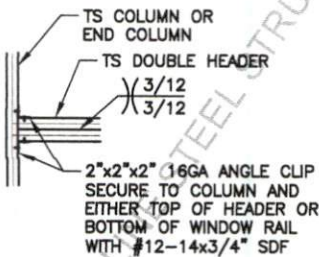
**3**  
S10  
END POST / BASE RAIL  
CONNECTION DETAIL

SCALE: 1/2" = 1'-0"



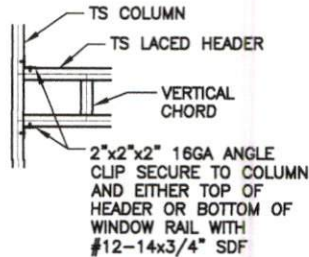
**4**  
S10  
COLUMN OR WINDOW  
RAIL / WALL GIRT TO POST  
CONNECTION DETAIL

SCALE: 1/2" = 1'-0"



**5**  
S10  
COLUMN / DOUBLE HEADER  
CONNECTION DETAIL

SCALE: 1/2" = 1'-0"



**6**  
S10  
COLUMN / LACED HEADER  
CONNECTION DETAIL

SCALE: 1/2" = 1'-0"



**FRONTLINE STEEL**  
**STRUCTURES, LLC**  
MT. AIRY, NORTH CAROLINA

DRAWN BY:  
BKS

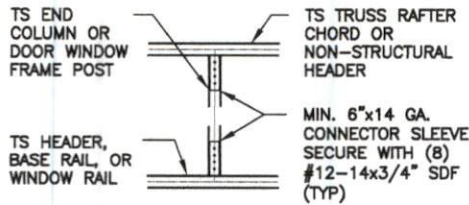
PROJECT NO:  
MISC

DATE:  
2023.05.12

SHEET NO:  
**S10**

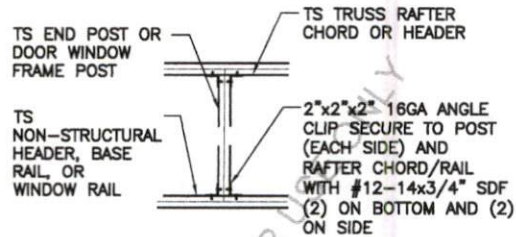
NOTE: THESE DRAWINGS ARE VALID FOR (1) CALENDAR YEAR AFTER THE ISSUE DATE LISTED ON THIS SHEET.

# CONNECTION DETAILS



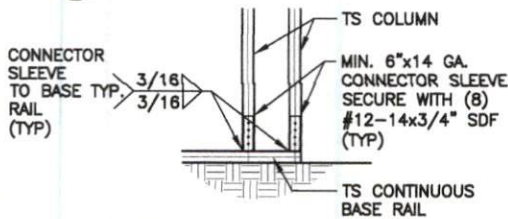
**1**  
S11  
COLUMN TO HEADER OR BASE RAIL CONNECTION DETAIL

SCALE: 1/2" = 1'-0"



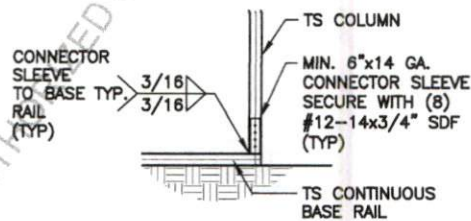
**2**  
S11  
DOOR OR WINDOW HEADER RAIL TO POST CONNECTION DETAIL

SCALE: 1/2" = 1'-0"



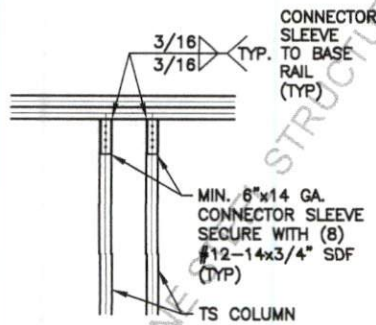
**3**  
S11  
COLUMN / BASE RAIL CONNECTION DETAIL

SCALE: 1/2" = 1'-0"



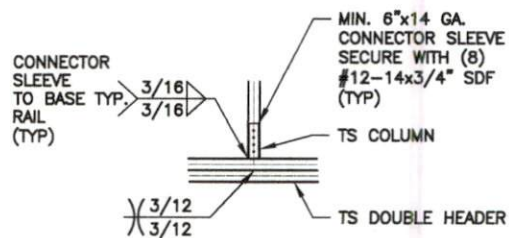
**4**  
S11  
COLUMN / BASE RAIL CONNECTION DETAIL

SCALE: 1/2" = 1'-0"



**5**  
S11  
DOUBLE HEADER / COLUMN CONNECTION DETAIL

SCALE: 1/2" = 1'-0"



**6**  
S11  
COLUMN / DOUBLE HEADER CONNECTION DETAIL

SCALE: 1/2" = 1'-0"



**TAYLOR & VIOLA**  
STRUCTURAL ENGINEERS  
P.O.B. 2616 HICKORY NORTH CAROLINA  
TELE. 828-328-6331 FAX 828-322-1801  
WWW.TAYLORVIOLA.COM

**FRONTLINE STEEL**  
**STRUCTURES, LLC**  
MT. AIRY, NORTH CAROLINA

**DRAWN BY:**  
BKS

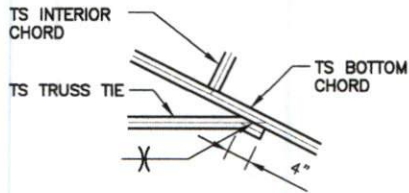
**PROJECT NO:**  
MISC

**DATE:**  
2023.05.12

**SHEET NO:**  
**S11**

NOTE: THESE DRAWINGS ARE VALID FOR (1) CALENDAR YEAR AFTER THE ISSUE DATE LISTED ON THIS SHEET.

# CONNECTION DETAILS



TRUSS TIE  
CONNECTION DETAIL

1  
S12

SCALE: 1/2" = 1'-0"

FRONT LINE STEEL STRUCTURES AUTHORIZED CUSTOMER USE ONLY



**TAYLOR & VIOLA**  
STRUCTURAL ENGINEERS  
P.O.B. 2516 HICKORY NORTH CAROLINA  
TELE: 828-328-4331 FAX: 828-322-1801  
WWW.TAYLORVIOLA.COM

**FRONTLINE STEEL  
STRUCTURES, LLC**  
MT. AIRY, NORTH CAROLINA

DRAWN BY:  
BKS

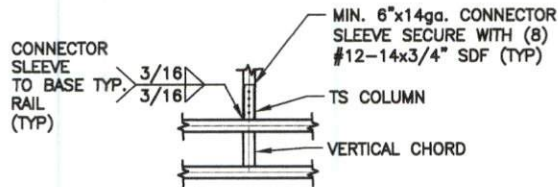
PROJECT NO:  
MISC

DATE:  
2023.05.12

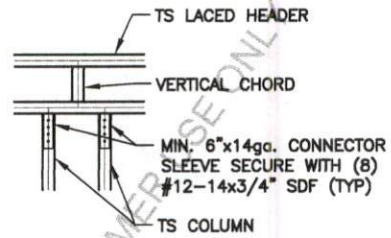
SHEET NO:  
**S12**

NOTE: THESE DRAWINGS ARE VALID FOR (1) CALENDER YEAR AFTER THE ISSUE DATE LISTED ON THIS SHEET.

# CONNECTION DETAILS



1  
S13 COLUMN / LACED HEADER  
CONNECTION DETAIL  
SCALE: 1/2" = 1'-0"



1  
S13 LACED HEADER / COLUMN  
CONNECTION DETAIL  
SCALE: 1/2" = 1'-0"



TAYLOR & VIOLA  
STRUCTURAL ENGINEERS  
P.O.B. 2616 HICKORY NORTH CAROLINA  
TELE: 828-328-6331 FAX: 828-322-1801  
WWW.TAYLORVIOLA.COM

FRONTLINE STEEL  
STRUCTURES, LLC  
MT. AIRY, NORTH CAROLINA

DRAWN BY:  
BKS

PROJECT NO:  
MISC

DATE:  
2023.05.12

SHEET NO:  
S13

NOTE: THESE DRAWINGS ARE VALID FOR (1) CALENDAR YEAR AFTER THE ISSUE DATE LISTED ON THIS SHEET.

[illegible]

MAIN BUILDING COLUMNS WITH LEAN-TO OR ROOF EXTENSION ATTACHED ARE REQUIRED TO BE DOUBLE COLUMNS FOR EAVE HEIGHTS  $<14'-1"$  TO  $<16'-0"$

MAIN BUILDING COLUMNS WITH LEAN-TO OR ROOF EXTENSION ATTACHED ARE REQUIRED TO BE SINGLE COLUMN FOR EAVE HEIGHTS  $<14'-0"$



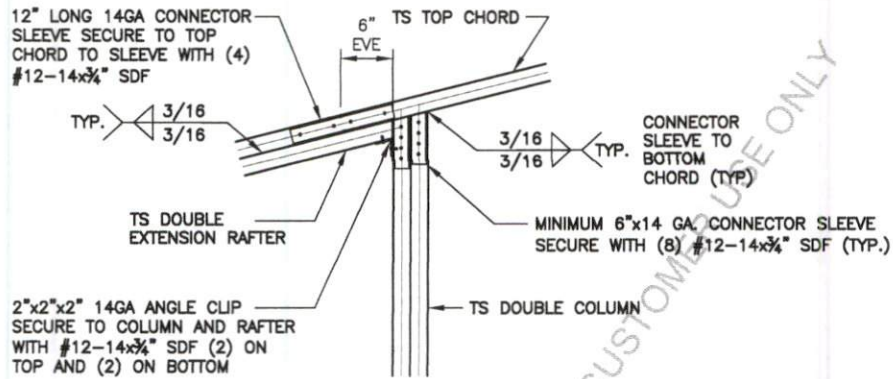
SCALE: 3/4" = 1'-0"



SHEET NO:  
**S14**

NOTE: THESE DRAWINGS ARE VALID FOR (1) CALENDER YEAR AFTER THE ISSUE DATE LISTED ON THIS SHEET.

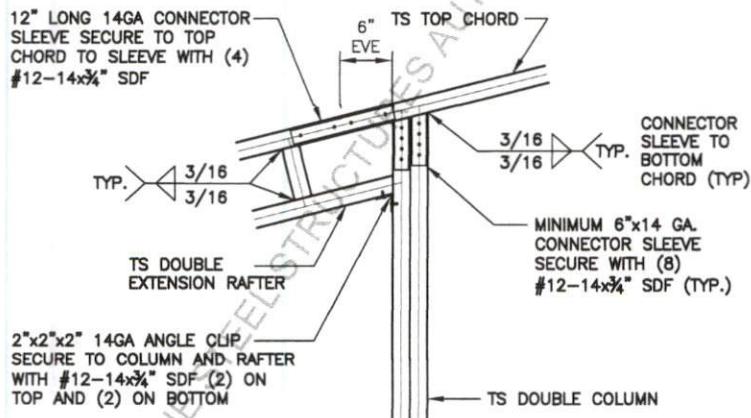
LEAN-TO OPTIONS FOR 41'-0" TO 50'-0"



SIDE EXTENSION RAFTER / CORNER POST  
DETAIL FOR RAFTER SPAN <14'-1" TO <15'-0"

1  
S14A

SCALE: 3/4" = 1'-0"



SIDE EXTENSION RAFTER / CORNER POST  
DETAIL FOR RAFTER SPAN <15'-1" TO <20'-0"

2  
S14A

SCALE: 3/4" = 1'-0"



TAYLOR & VIOLA  
STRUCTURAL ENGINEERS  
P.O.B. 2616 HICKORY NORTH CAROLINA  
TEL: 828-328-6331 FAX: 828-322-1801  
WWW.TAYLORVIOLA.COM

FRONTLINE STEEL  
STRUCTURES, LLC  
MT. AIRY, NORTH CAROLINA

DRAWN BY:  
BKS

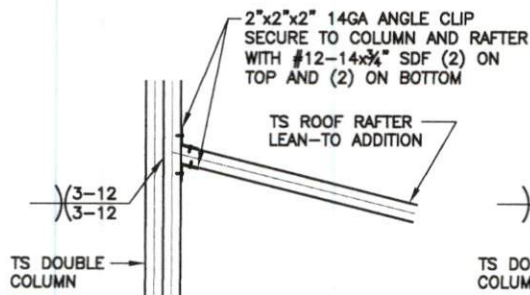
PROJECT NO:  
MISC

DATE:  
2023.05.12

SHEET NO:  
14A

NOTE: THESE DRAWINGS ARE VALID FOR (1) CALENDER YEAR AFTER THE ISSUE DATE LISTED ON THIS SHEET.

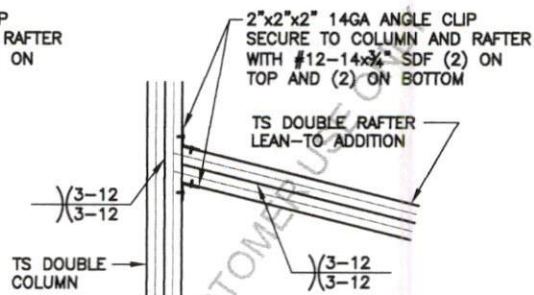
LEAN-TO OPTIONS FOR 41'-0" TO 50'-0"



LEAN-TO RAFTER TO RAFTER  
POST CONNECTION DETAIL FOR  
RAFTER SPAN <12'-0"

1  
S14B

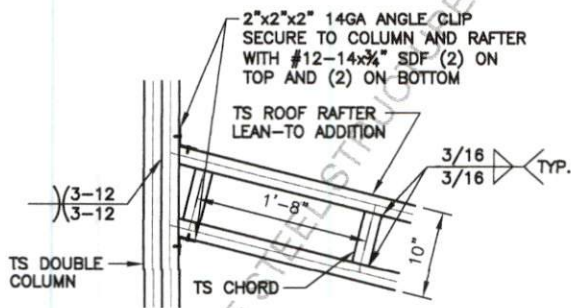
SCALE: 3/4" = 1'-0"



LEAN-TO RAFTER TO RAFTER  
POST CONNECTION DETAIL FOR  
RAFTER SPAN <12'-1" TO <15'-0"

2  
S14B

SCALE: 3/4" = 1'-0"



LEAN-TO RAFTER TO RAFTER  
POST CONNECTION DETAIL FOR  
RAFTER SPAN <15'-1" TO <20'-0"

3  
S14B

SCALE: 3/4" = 1'-0"



TAYLOR & VIOLA  
STRUCTURAL ENGINEERS  
P.O.B. 2616 HICKORY NORTH CAROLINA  
TEL: 828-328-6331 FAX: 828-322-1801  
WWW.TAYLORVOLA.COM

FRONTLINE STEEL  
STRUCTURES, LLC  
MT. AIRY, NORTH CAROLINA

DRAWN BY:  
BKS

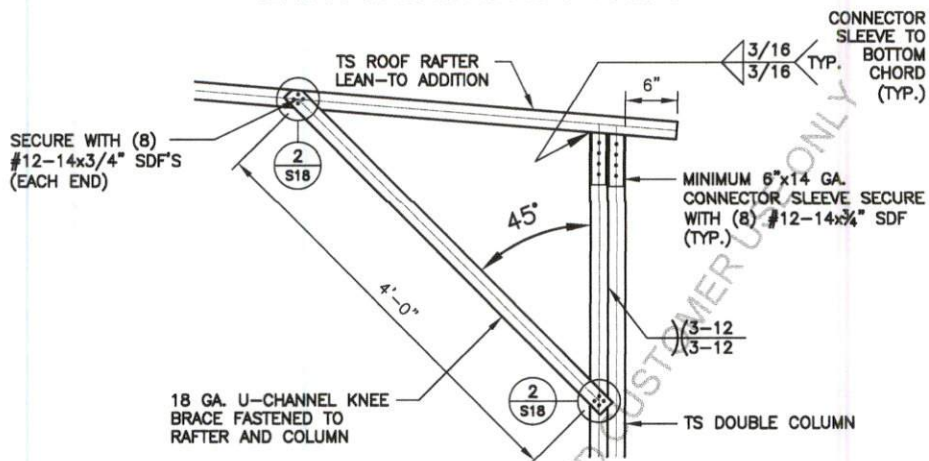
PROJECT NO:  
MISC

DATE:  
2023.05.12

SHEET NO:  
S14B

NOTE: THESE DRAWINGS ARE VALID FOR (1) CALENDER YEAR AFTER THE ISSUE DATE LISTED ON THIS SHEET.

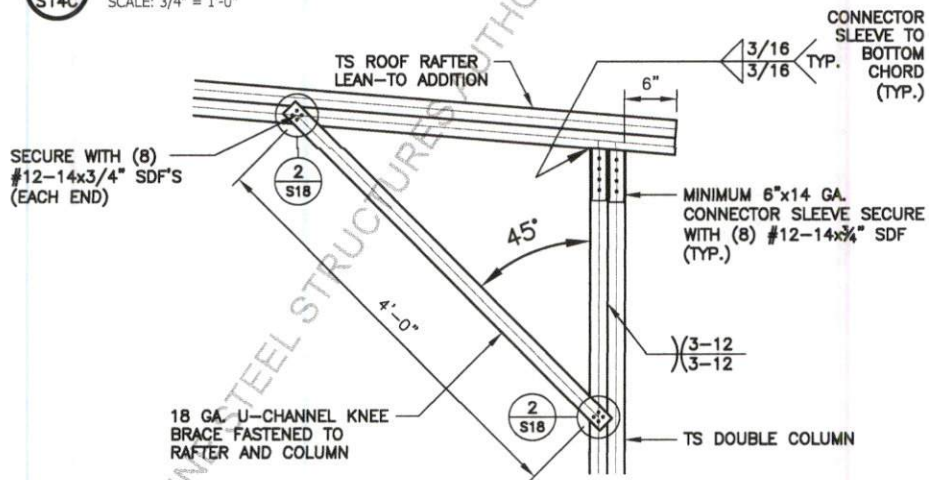
LEAN-TO OPTIONS FOR 41'-0" TO 50'-0"



BOX EAVE RAFTER COLUMN CONNECTION  
DETAIL FOR RAFTER SPAN <12'-0"



SCALE: 3/4" = 1'-0"



BOX EAVE RAFTER COLUMN CONNECTION  
DETAIL FOR RAFTER SPAN <12'-1" TO <15'-0"

2  
S14C

SCALE: 3/4" = 1'-0"



**TAYLOR & VIOLA**  
STRUCTURAL ENGINEERS

 P.O.B. 2616 HICKORY NORTH CAROLINA  
TELE: 828-328-6331 FAX: 828-322-1801  
WWW.TAYLORVIOLA.COM

FRONTLINE STEEL  
STRUCTURES, LLC  
MT. AIRY, NORTH CAROLINA

DRAWN BY:  
BKS

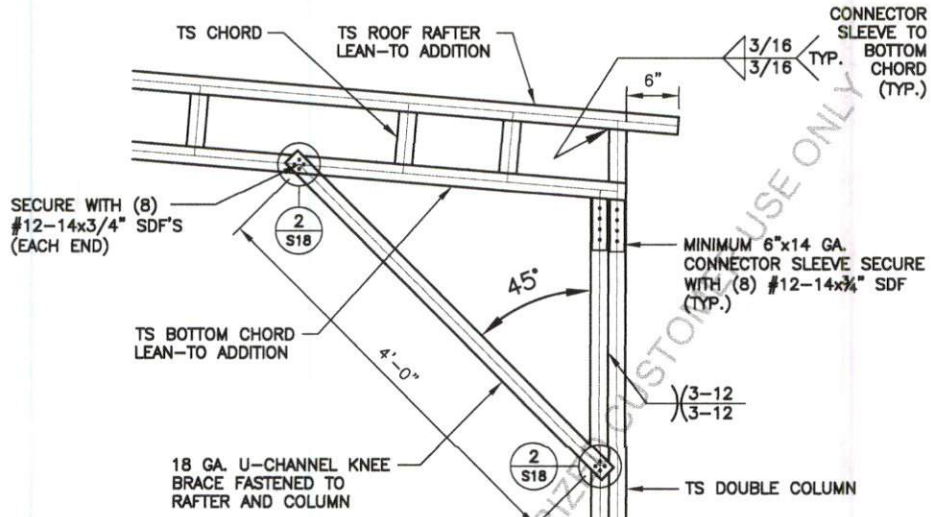
PROJECT NO:  
MISC

DATE:  
2023.05.12

SHEET NO:  
**S14C**

NOTE: THESE DRAWINGS ARE VALID FOR (1) CALENDER YEAR AFTER THE ISSUE DATE LISTED ON THIS SHEET.

# LEAN-TO OPTIONS FOR 41'-0" TO 50'-0"



## BOX EAVE RAFTER COLUMN CONNECTION DETAIL FOR RAFTER SPAN <15'-1" TO <20'-0"

1  
S14D

SCALE: 3/4" = 1'-0"



**TAYLOR & VIOLA**  
STRUCTURAL ENGINEERS  
P.O.B. 2616 HICKORY NORTH CAROLINA  
TELE: 828-328-6331 FAX: 828-322-1801  
WWW.TAYLORVIOLA.COM

**FRONTLINE STEEL**  
**STRUCTURES, LLC**  
MT. AIRY, NORTH CAROLINA

DRAWN BY:  
BKS

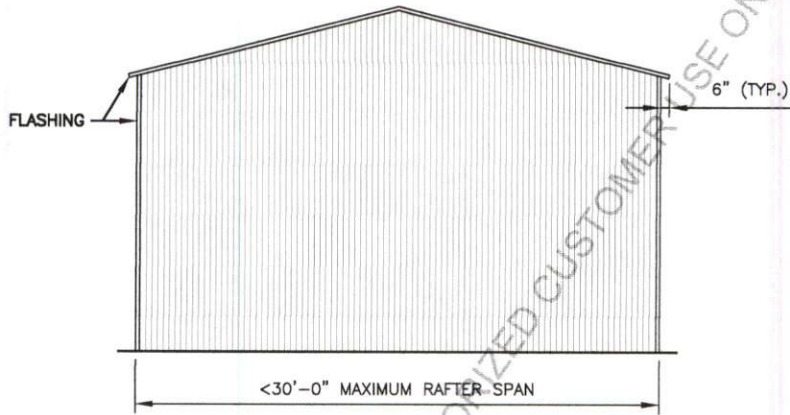
PROJECT NO:  
MISC

DATE:  
2023.05.12

SHEET NO:  
**S14D**

NOTE: THESE DRAWINGS ARE VALID FOR (1) CALENDER YEAR AFTER THE ISSUE DATE LISTED ON THIS SHEET.

VERTICAL ROOF / SIDING OPTION



TYPICAL END ELEVATION - VERTICAL ROOF / SIDING



**TAYLOR & VIOLA**  
STRUCTURAL ENGINEERS  
P.O.B. 2616 HICKORY, NORTH CAROLINA  
TELE: 828-328-6331 FAX: 828-322-1801  
WWW.TAYLORVOLA.COM

**FRONTLINE STEEL**  
**STRUCTURES, LLC**  
MT. AIRY, NORTH CAROLINA

**DRAWN BY:**  
BKS

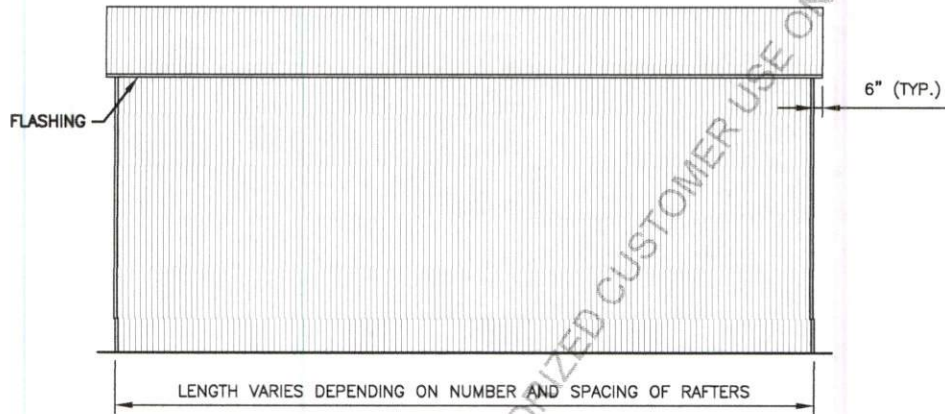
**PROJECT NO:**  
MISC

**DATE:**  
2023.05.12

**SHEET NO:**  
**S15**

NOTE: THESE DRAWINGS ARE VALID FOR (1) CALENDER YEAR AFTER THE ISSUE DATE LISTED ON THIS SHEET.

VERTICAL ROOF / SIDING OPTION



TYPICAL END ELEVATION - VERTICAL ROOF / SIDING



TAYLOR & VIOLA  
STRUCTURAL ENGINEERS  
P.O.B. 2516 HICKORY NORTH CAROLINA  
TELE: 828-328-4331 FAX: 828-322-1801  
WWW.TAYLORVIOLA.COM

FRONTLINE STEEL  
STRUCTURES, LLC  
MT. AIRY, NORTH CAROLINA

DRAWN BY:  
BKS

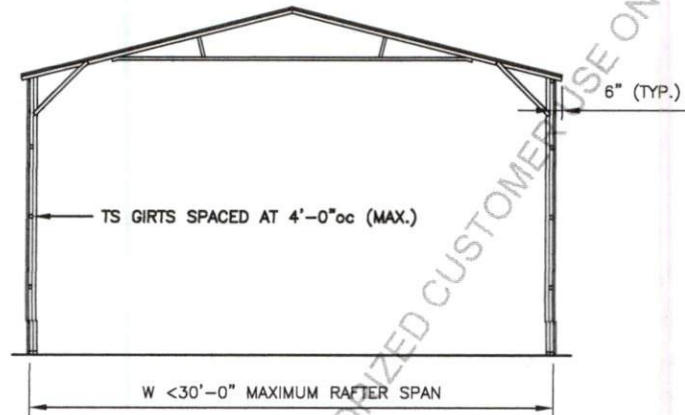
PROJECT NO:  
MISC

DATE:  
2023.05.12

SHEET NO:  
**S15A**

NOTE: THESE DRAWINGS ARE VALID FOR (1) CALENDAR YEAR AFTER THE ISSUE DATE LISTED ON THIS SHEET.

# VERTICAL ROOF / SIDING OPTION



## TYPICAL SECTION VERTICAL ROOF / SIDING OPTION

MAIN BUILDING COLUMNS TO BE DOUBLE COLUMNS FOR EAVE HEIGHTS <14'-1" TO <16'-0"

MAIN BUILDING COLUMNS TO BE SINGLE COLUMNS FOR EAVE HEIGHTS <14'-0"



**TAYLOR & VIOLA**  
STRUCTURAL ENGINEERS  
P.O.B. 2616 HICKORY NORTH CAROLINA  
TELE 828-328-6331 FAX 828-322-1801  
WWW.TAYLORVIOLA.COM

**FRONTLINE STEEL**  
**STRUCTURES, LLC**  
MT. AIRY, NORTH CAROLINA

DRAWN BY:  
BKS

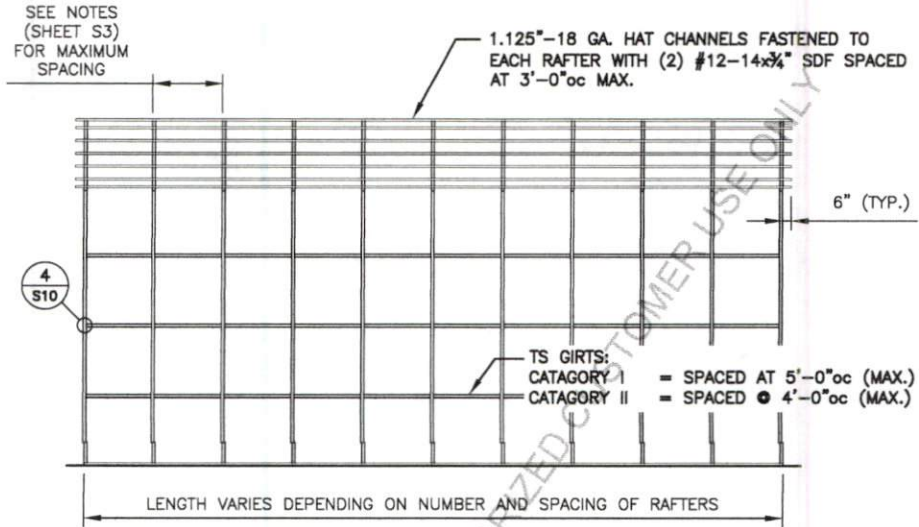
PROJECT NO:  
MISC

DATE:  
2023.05.12

SHEET NO:  
**S16**

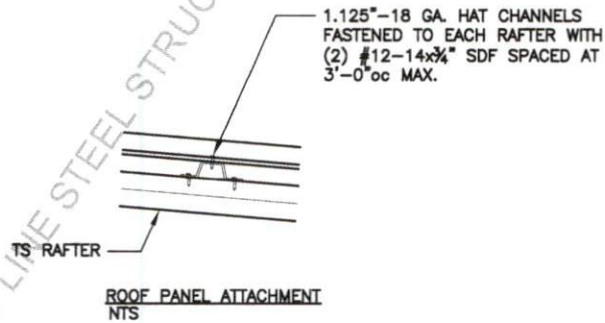
NOTE: THESE DRAWINGS ARE VALID FOR (1) CALENDAR YEAR AFTER THE ISSUE DATE LISTED ON THIS SHEET.

# VERTICAL ROOF / SIDING OPTION



## TYPICAL SIDE FRAMING SECTION VERTICAL ROOF / SIDING OPTION

NOTE:  
1.125"-18 GA. HAT CHANNELS CAN BE USED AS AN OPTION IN PLACE OF TUBE STEEL  
(TS) WALL GIRTS. HAT CHANNELS MUST BE SPACED AT 3'-0"oc MAX.



**TAYLOR & VIOLA**  
STRUCTURAL ENGINEERS  
P.O.B. 2616 HICKORY NORTH CAROLINA  
TELE: 828-328-6331 FAX: 828-322-1801  
WWW.TAYLORVIOLA.COM

FRONTLINE STEEL  
STRUCTURES, LLC  
MT. AIRY, NORTH CAROLINA

DRAWN BY:  
BKS

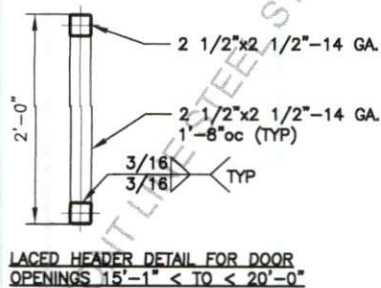
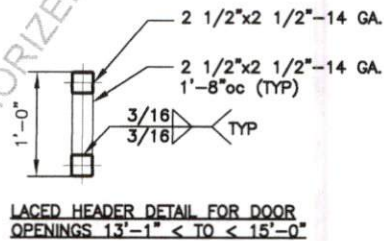
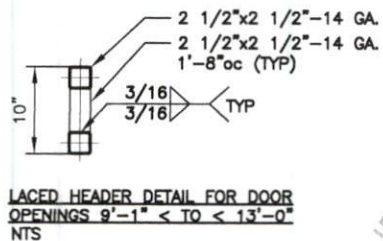
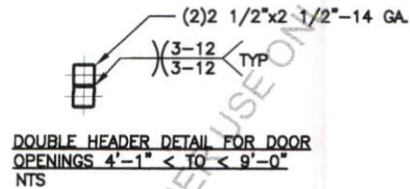
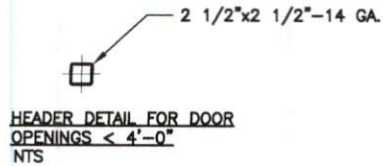
PROJECT NO:  
MISC

DATE:  
2023.05.12

SHEET NO:  
**S16A**

NOTE: THESE DRAWINGS ARE VALID FOR (1) CALENDAR YEAR AFTER THE ISSUE DATE LISTED ON THIS SHEET.

# SIDE WALL HEADER OPTIONS



## GENERAL NOTE:

PROVIDE DOUBLE WYTHE HEADER  
ON DOUBLE COLUMNS AND LACED  
COLUMNS



TAYLOR & VIOLA  
STRUCTURAL ENGINEERS  
P.O.B. 2616 HICKORY NORTH CAROLINA  
TELE. 828-328-6331 FAX 828-322-1801  
WWW.TAYLORVIOLA.COM

FRONTLINE STEEL  
STRUCTURES, LLC  
MT. AIRY, NORTH CAROLINA

DRAWN BY:  
BKS

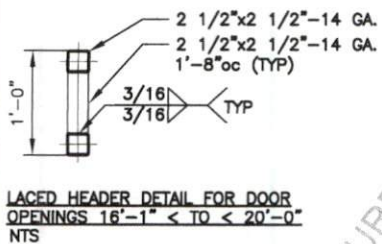
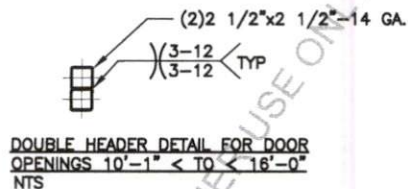
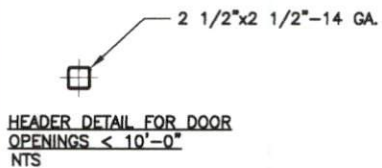
PROJECT NO:  
MISC

DATE:  
2023.05.12

SHEET NO:  
S17

NOTE: THESE DRAWINGS ARE VALID FOR (1) CALENDAR YEAR AFTER THE ISSUE DATE LISTED ON THIS SHEET.

# END WALL HEADER OPTIONS



## GENERAL NOTE:

PROVIDE DOUBLE WYTHE HEADER  
ON DOUBLE COLUMNS AND LACED  
COLUMNS



TAYLOR & VIOLA  
STRUCTURAL ENGINEERS  
P.O.B. 2816 HICKORY NORTH CAROLINA  
TELE. 828-329-6331 FAX 828-322-1801  
WWW.TAYLORVOLA.COM

FRONTLINE STEEL  
STRUCTURES, LLC  
MT. AIRY, NORTH CAROLINA

DRAWN BY:  
BKS

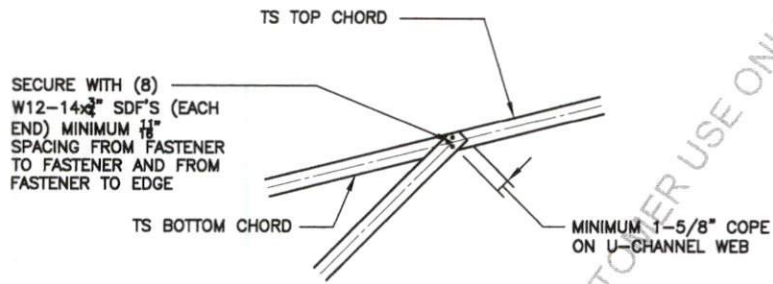
PROJECT NO:  
MISC

DATE:  
2023.05.12

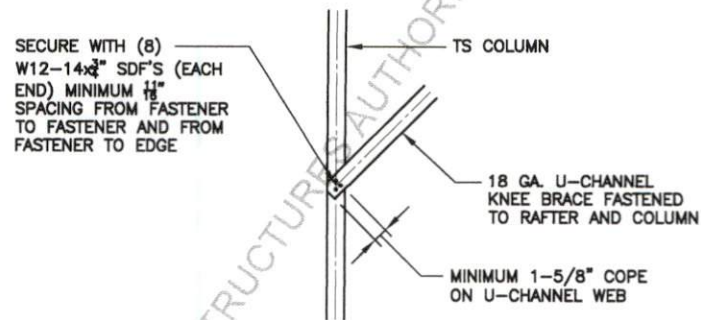
SHEET NO:  
S17A

NOTE: THESE DRAWINGS ARE VALID FOR (1) CALENDAR YEAR AFTER THE ISSUE DATE LISTED ON THIS SHEET.

# U-CHANNEL CONNECTION DETAILS



**1** U-CHANNEL TO RAFTER CONNECTION DETAIL  
**S18** SCALE: 3/4" = 1'-0"



**2** U-CHANNEL TO COLUMN CONNECTION DETAIL  
**S18** SCALE: 3/4" = 1'-0"



**TAYLOR & VIOLA**  
 STRUCTURAL ENGINEERS  
 P.O.B. 2515 HICKORY NORTH CAROLINA  
 TELE. 828-328-6331 FAX 828-322-1801  
 WWW.TAYLORVIOLA.COM

**FRONTLINE STEEL**  
**STRUCTURES, LLC**  
 MT. AIRY, NORTH CAROLINA

**DRAWN BY:**  
 BKS

**DATE:**  
 2023.05.12

**PROJECT NO:**  
 MISC

**SHEET NO:**  
**S18**

NOTE: THESE DRAWINGS ARE VALID FOR (1) CALENDAR YEAR AFTER THE ISSUE DATE LISTED ON THIS SHEET.