

# BBQ CHURCH RD - LOT 3

Project No. 2119-1

<u>LINE #</u>	<u>FLAG COLOR</u>	<u>BS (ft)</u>	<u>HI (ft)</u>	<u>FS (ft)</u>	<u>ELEVATION (ft)</u>	<u>FLAGGED LINE LENGTH (ft)</u>	<u>DESIGN LINE LENGTH (ft)</u>
TBM		4.20			100.00		
INSTR. 1			104.20				
1	YELLOW			2.00	102.20	55	55
2	RED			3.10	101.10	90	90
3	BLUE			3.70	100.50	95	95
4	ORANGE			4.90	99.30	97	97
5	BLUE			5.60	98.60	125	125
6	ORANGE			7.30	96.90	123	123
7	YELLOW			7.90	96.30	132	132
Total						717	717

<u>System</u>	<u>DESIGN LINE LENGTH (ft)</u>	<u>SOIL LTAR GPD/FT<sup>2</sup></u>	<u>SYSTEM TYPE</u>	<u>DESIGN LTAR* GPD/FT<sup>2</sup></u>	<u>DISTRIBUTION MEDIA</u>	<u>DISTRIBUTION METHOD</u>	<u>DESIGN FLOW (GPD)</u>
	337	0.350	Accepted	0.27	Chamber	Pressure Manifold	360
Repair	380	0.350	Innovative	0.24	LP Chamber	Pressure Manifold	360

- Notes:**
- 1) TBM on iron pipe .
  - 2) TBM is assumed to be 100.00'.
  - 3) All measures in feet.
  - 4) Nitrification lines are demonstrated on contour via colored pin flags.
  - 5) BS, FS indicate rod readings.
- \* **Design LTAR = Design Flow / ((Design Line Length x Trench Width) / (1-%Reduction))**

**BBQ CHURCH RD - LOT 3**  
**Project No. 2119-1**  
**SYSTEM TAP CHART**

Line #	Color	Field Elev. (ft)	Length (ft)	Hole Size (in)	Flow/Tap (gpm)	gpd	Trench Area (sq ft)	Line LTAR (gpd/sq ft)
1	YELLOW	<b>102.20</b>	<b>55</b>	1/2" SCH. 80	<b>5.48</b>	55.04	165	0.334
2	RED	<b>101.10</b>	<b>90</b>	3/4" SCH. 80	<b>10.12</b>	101.65	270	0.376
3	BLUE	<b>100.50</b>	<b>95</b>	3/4" SCH. 80	<b>10.12</b>	101.65	285	0.357
4	ORANGE	<b>99.30</b>	<b>97</b>	3/4" SCH. 80	<b>10.12</b>	101.65	291	0.349

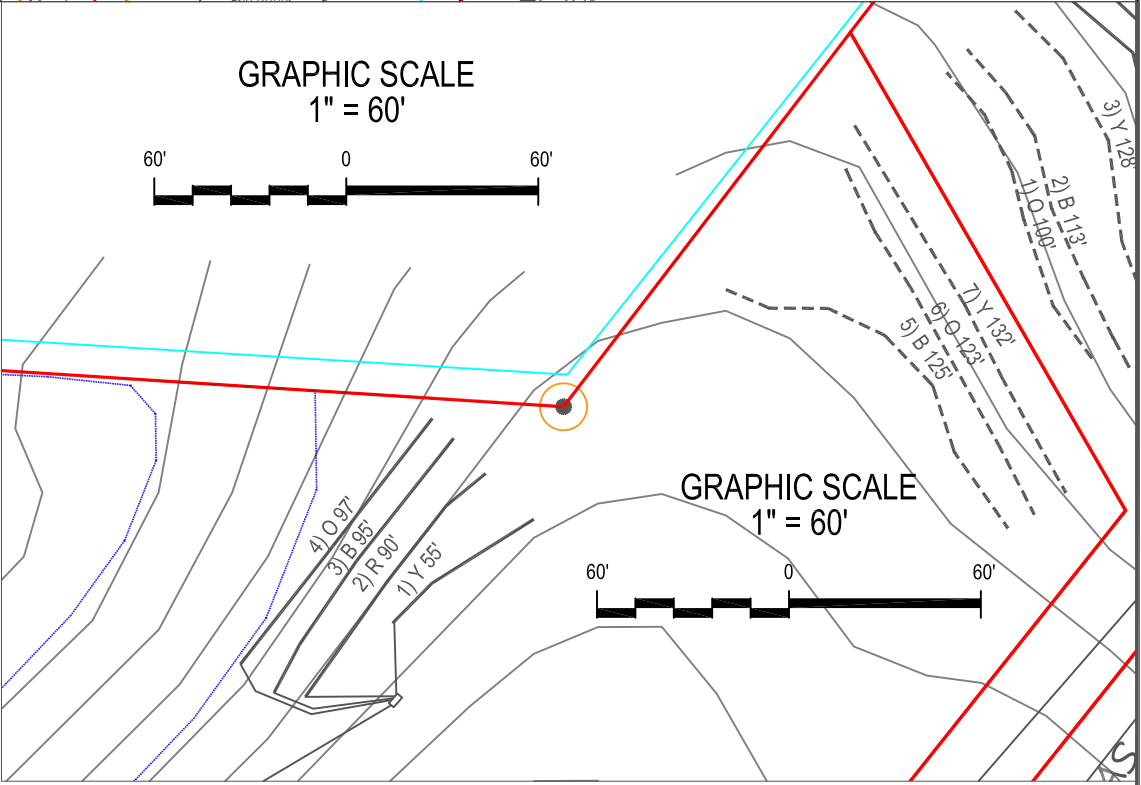
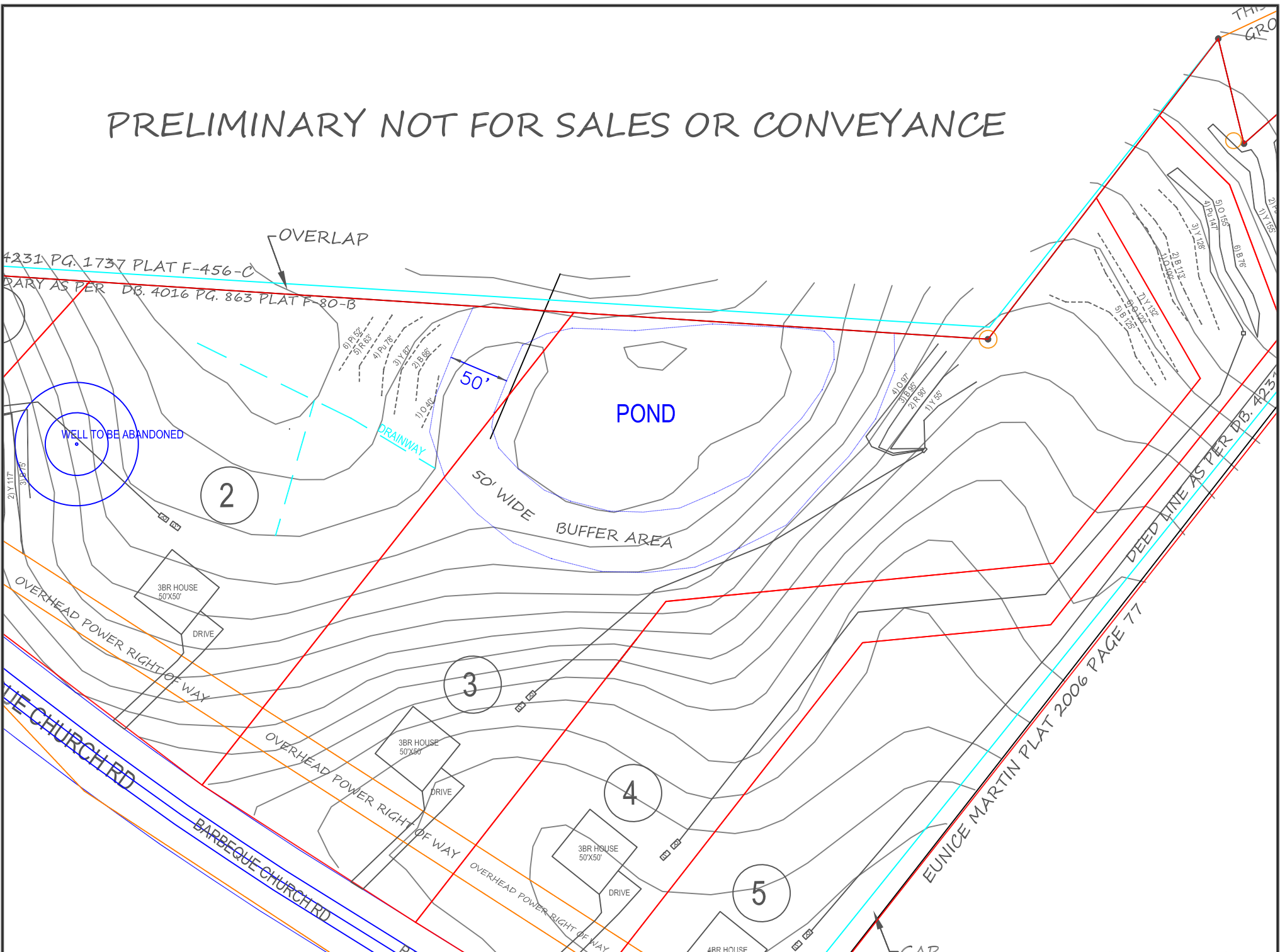
total                  feet =                  337                  gal/min =                  35.85

Des. Flow	360	gpd
Pump Run=	10.04	min
soil LTAR	0.350	gpd/sq ft
(ltar +5%)	0.3675	gpd/sq ft
INNOV. Product Reduction	25%	
LTAR with INNOV.	0.467	gpd/sq ft
LTAR with INNOV. + 5%	0.490	gpd/sq ft

100% Dose Volume	219.31	gal
Percent Dose Volume	75%	
Total	164.48	gal

Pump Run Time	4.59	min
---------------	------	-----

PRELIMINARY NOT FOR SALES OR CONVEYANCE



LEGEND

	SYSTEM LINE
	REPAIR LINE
	PRIVATE WELL TO BE ABANDONED
	SEPTIC TANK
	PUMP TANK

- NOTES:
- 1) SITE DATA TO INCLUDE PROPERTY BOUNDARIES, STRUCTURE LOCATION, UTILITIES, ROADS, AND OTHER SITE FEATURES WERE PROVIDED BY SULLIVAN SURVEYING AND ARE SHOWN TO DISPLAY GENERAL SITE CONDITIONS.
  - 2) ALL SEPTIC SYSTEM COMPONENTS TO INCLUDE TANKS, PUMPS, MANIFOLDS, AND SYSTEM AND REPAIR LINES HAVE BEEN GPS LOCATED BY SOIL SERVICES, PLLC. ALL LOCATIONS, ELEVATIONS, AND DIMENSIONS ARE APPROXIMATE AND AS SUCH NO SPECIFIC ACCURACY EITHER VERTICAL OR HORIZONTAL IS IMPLIED.
  - 3) PROPERTY AND EASEMENT BOUNDARIES SHOWN ON THIS SITE SKETCH ARE APPROXIMATE AND ARE NOT INTENDED FOR LOCATING PROPERTY OR IDENTIFYING PROPERTY OR EASEMENT CORNERS. THIS IS NOT A SURVEY.



SOIL SERVICES, PLLC

PO BOX 91115, RALEIGH, NC 27675  
OFFICE: (919) 745-1928 FAX: (919) 375-3969  
WWW.SOILSERVICES.US

Sheet Title: <b>SEPTIC SYSTEM SITE PLAN</b>		Project No.: 2119-1	
Project: <b>BBQ CHURCH RD - LOT 3</b>		Project Manager: SM	Drawn: SM
Location: HARNETT CO., NC		Scale: 1"=60'	Field Work: JK
Client: REDD SOLUTIONS		Sheet No.: <b>1 of 1</b>	

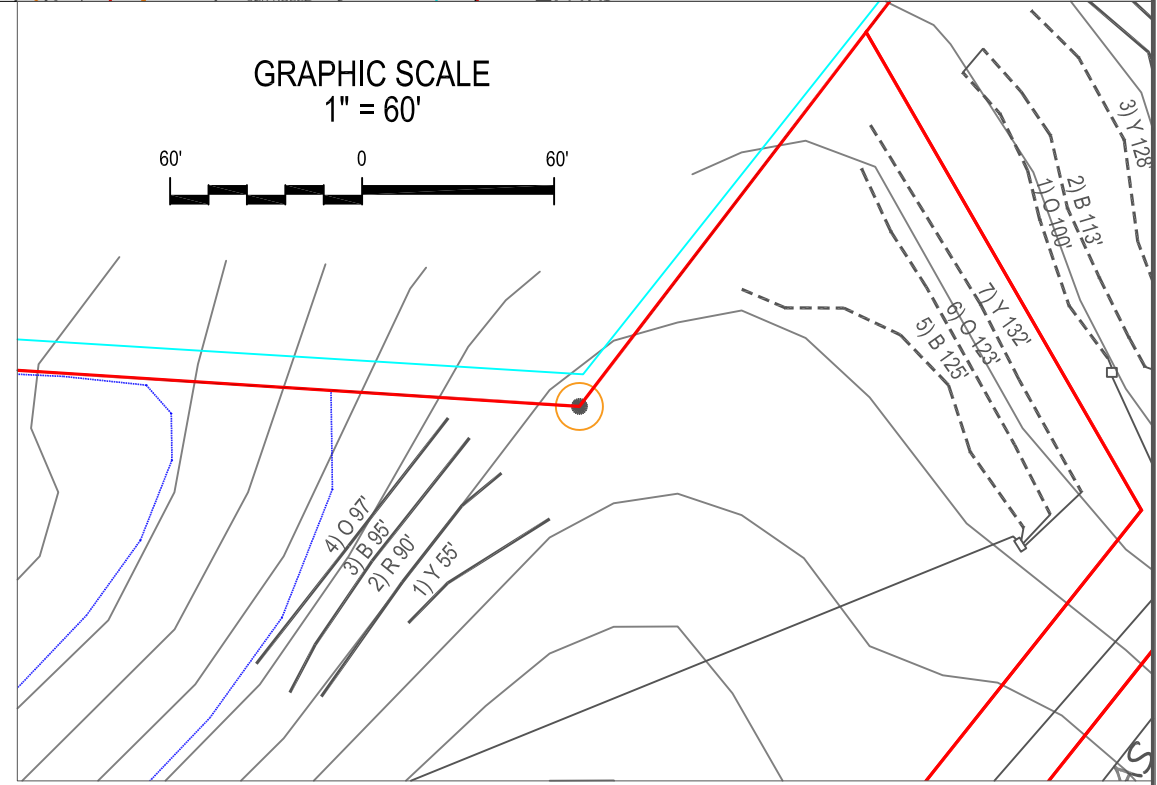
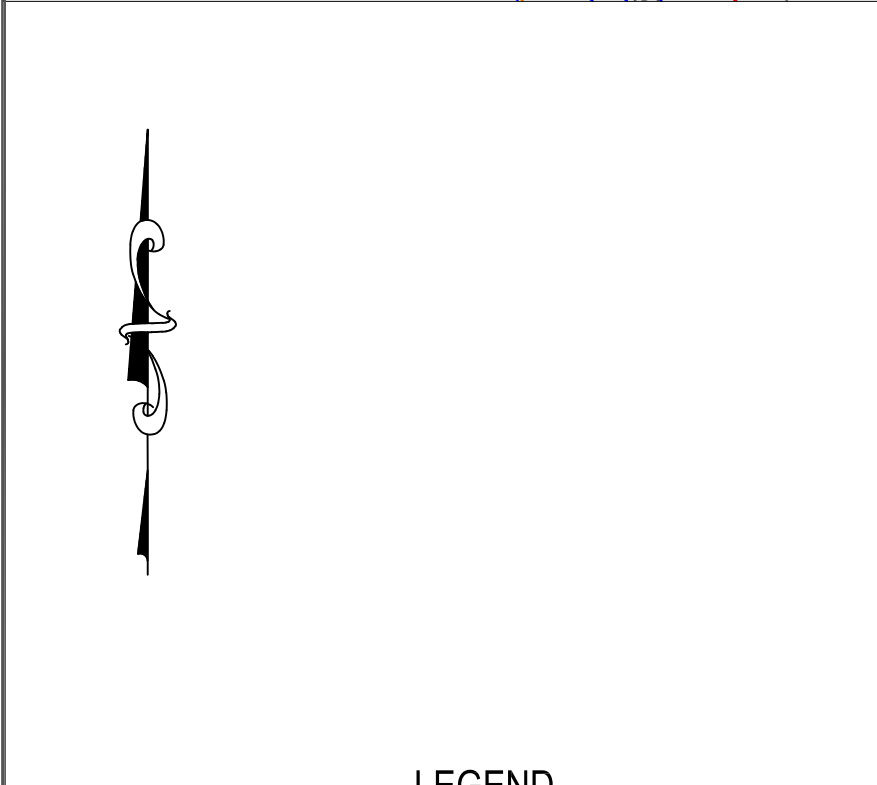
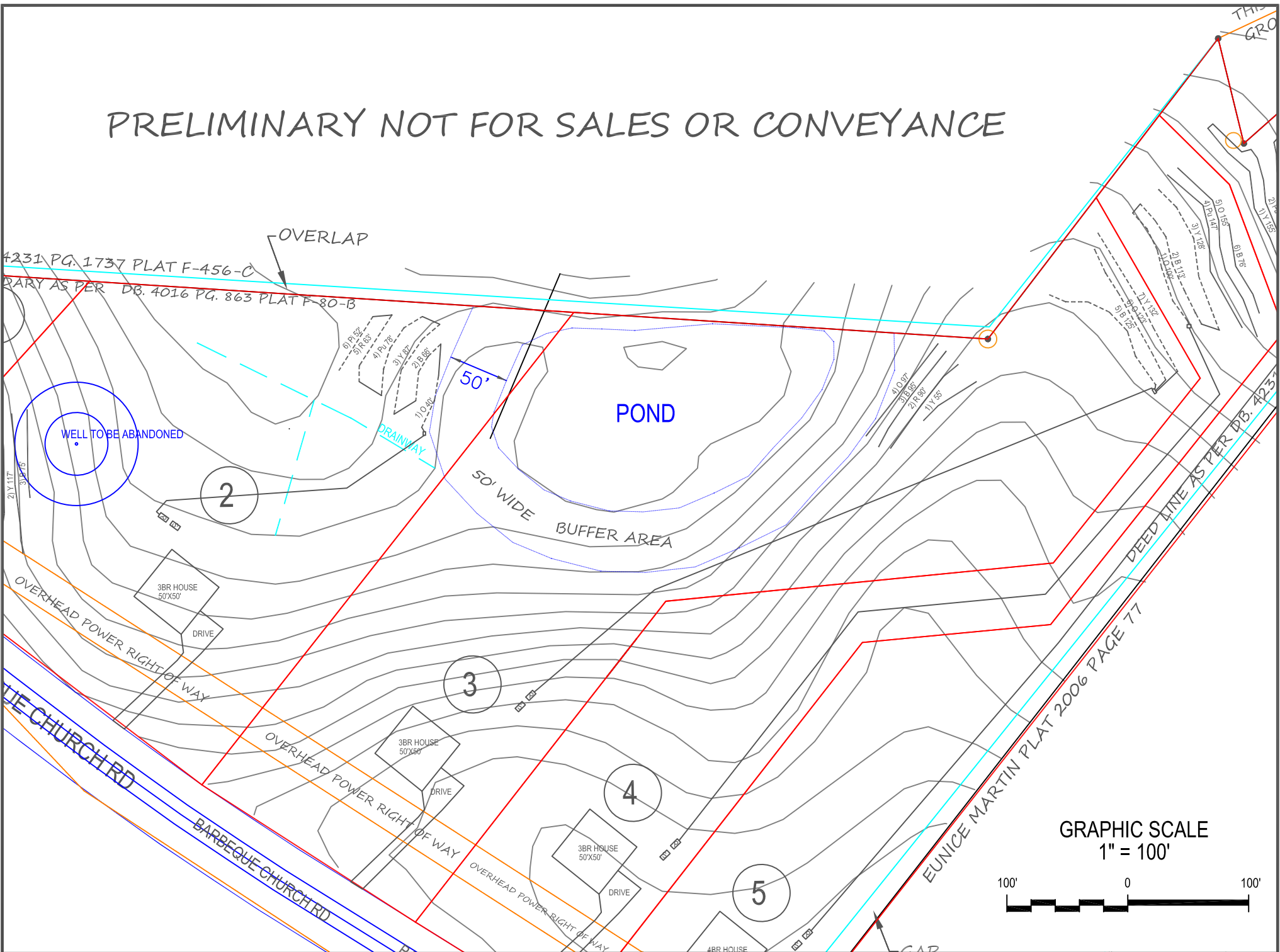
**BBQ CHURCH RD - LOT 3**  
**Project No. 2119-1**  
**REPAIR TAP CHART**

Line #	Color	Field Elev. (ft)	Length (ft)	Hole Size (in)	Flow/Tap (gpm)	gpd	Trench Area (sq ft)	Line LTAR (gpd/sq ft)
5	BLUE	<b>98.60</b>	<b>125</b>	1/2" SCH. 40	<b>7.11</b>	120.00	375	0.320
6	ORANGE	<b>96.90</b>	<b>123</b>	1/2" SCH. 40	<b>7.11</b>	120.00	369	0.325
7	YELLOW	<b>96.30</b>	<b>132</b>	1/2" SCH. 40	<b>7.11</b>	120.00	396	0.303

total                  feet =                  380                  gal/min =                  21.34

Des. Flow	360	gpd
Pump Run=	16.87	min
soil LTAR	0.35	gpd/sq ft
(ltar +5%)	0.3675	gpd/sq ft
INNOV. Product Reduction	25%	
LTAR with INNOV.	0.466666667	gpd/sq ft
LTAR with INNOV. + 5%	0.49	gpd/sq ft
100% Dose Volume	247.29	gal
Percent Dose Volume	66%	
Total	163.21	gal
Pump Run Time	7.65	min

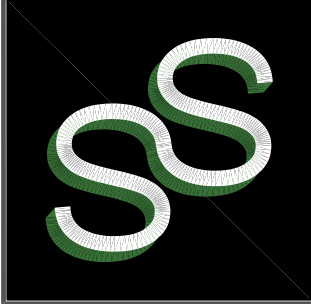
PRELIMINARY NOT FOR SALES OR CONVEYANCE



LEGEND

	SYSTEM LINE
	REPAIR LINE
	PRIVATE WELL TO BE ABANDONED
	SEPTIC TANK
	PUMP TANK

- NOTES:
- 1) SITE DATA TO INCLUDE PROPERTY BOUNDARIES, STRUCTURE LOCATION, UTILITIES, ROADS, AND OTHER SITE FEATURES WERE PROVIDED BY SULLIVAN SURVEYING AND ARE SHOWN TO DISPLAY GENERAL SITE CONDITIONS.
  - 2) ALL SEPTIC SYSTEM COMPONENTS TO INCLUDE TANKS, PUMPS, MANIFOLDS, AND SYSTEM AND REPAIR LINES HAVE BEEN GPS LOCATED BY SOIL SERVICES, PLLC. ALL LOCATIONS, ELEVATIONS, AND DIMENSIONS ARE APPROXIMATE AND AS SUCH NO SPECIFIC ACCURACY EITHER VERTICAL OR HORIZONTAL IS IMPLIED.
  - 3) PROPERTY AND EASEMENT BOUNDARIES SHOWN ON THIS SITE SKETCH ARE APPROXIMATE AND ARE NOT INTENDED FOR LOCATING PROPERTY OR IDENTIFYING PROPERTY OR EASEMENT CORNERS. THIS IS NOT A SURVEY.



SOIL SERVICES, PLLC

PO BOX 91115, RALEIGH, NC 27675  
OFFICE: (919) 745-1928 FAX: (919) 375-3969  
WWW.SOILSERVICES.US

Sheet Title: <b>SEPTIC REPAIR SITE PLAN</b>		Project No.: 2119-1	
Project: <b>BBQ CHURCH RD - LOT 3</b>		Project Manager: SM	Drawn: SM
Location: HARNETT CO., NC		Scale: 1":60'	Field Work: JK
Client: REDD SOLUTIONS		Sheet No.: <b>1 of 1</b>	