



GREG ROBINSON, P.E.
CONSULTING ENGINEER

6512 Six Forks Road, Suite 403A
Raleigh, North Carolina 27615

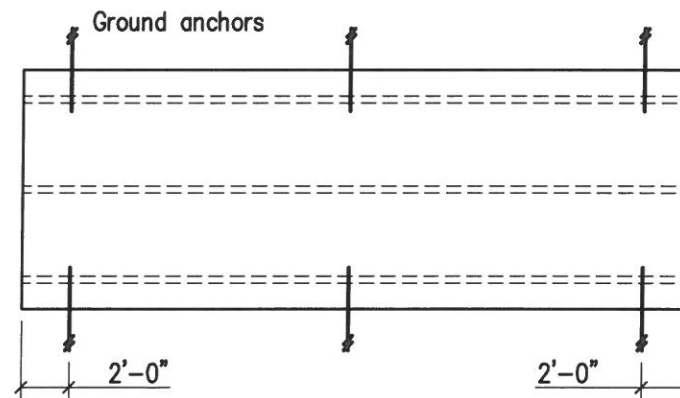
919.846.4752
info@gar-pe.com

THE **Shed Depot**
OF NORTH CAROLINA



1732 Westover Drive
Sanford, North Carolina 27330
919.776.0206
info@sheddepotnc.com

**12'-0 x 12'-0 to 28'-0
A-Frame Shed**



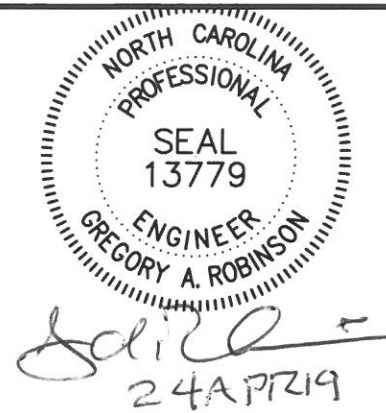
Ground Anchors

(Ground_Anchors) Scale: 1/8"=1'-0"

Ground Anchor Schedule		(ANCHOR SCHED)
Building Length	Number of Ground Anchors Each Long Side	
30 ft - 36 ft	3	
12 ft - 28 ft	2	

Notes:

1. Minimum uplift capacity of each anchor: 2,300 pounds
2. Install ground anchors and strapping in accordance with manufacturer's instructions



GENERAL NOTES AND OUTLINE SPECIFICATIONS

01000 GENERAL

1. Design Live Loads
Floor 40 psf
Roof 20 psf
2. Ground Snow Loads (2018 NC Building Code, 2015 IBC, ASCE 7-10)
Ground Snow Load: 15 psf
3. Wind loads (2018 NC Building Code, 2015 IBC, ASCE 7-10)
Basic Wind Velocity (ultimate): 120 mph; Exposure: C; Category III
4. Lateral design controlled by Wind Loads.

02000 FOUNDATION

1. Design soil bearing capacity: 2,000 psf (presumed).

06090 PRE-ENGINEERED WOOD CONNECTORS

1. Connectors shall be hot-dipped galvanized or electro-plated galvanized with a minimum coating of G90.
2. Nails shall be "common" unless otherwise noted in the drawings.

06110 WOOD FRAMING

1. Unless noted otherwise: kiln-dried, S-P-F, #2 grade, surfaced dry, 15 percent maximum moisture content.
Floor joists: preservative-treated, kiln-dried, Southern Pine, #2 grade, surfaced dry, 15 percent maximum moisture content.
Mud sills: preservative treated, kiln-dried, Southern Pine, #2 grade, surfaced dry, 19 percent maximum moisture content.
2. Nail sizes:

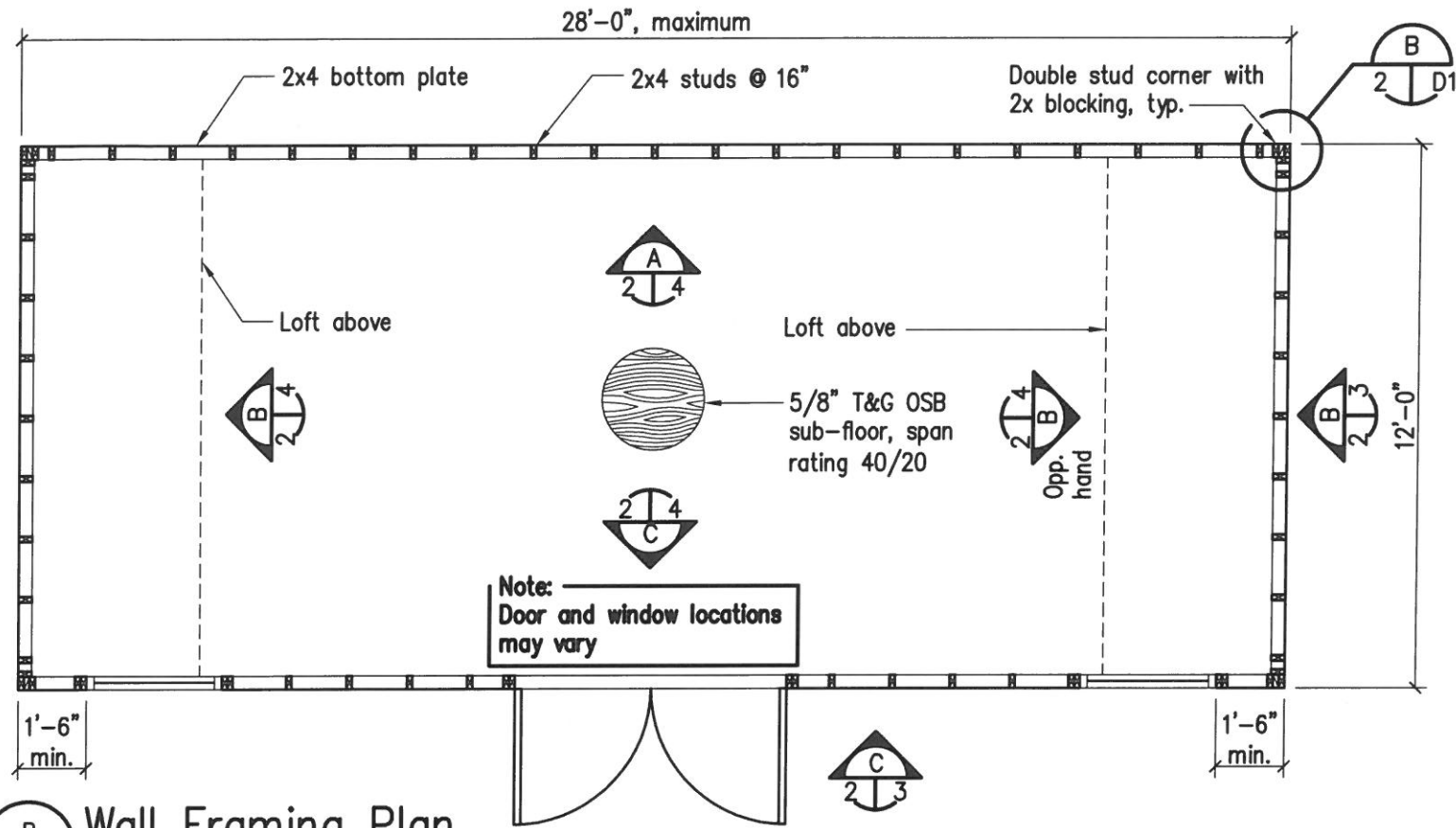
Pennyweight	Length (inches)	Diameter (inches)
8d	2.5	0.131
10d	3	0.148
12d	3.25	0.148

06120 STRUCTURAL WOOD PANELS

1. Sheathing shall conform to the grading rules of U.S. Product Standard PS 1, latest edition, and shall have appropriate grade trade mark of an American Plywood Association approved agency on each plywood panel. Sheathing shall be APA rated sheathing in thicknesses and span ratings shown drawings. Sheathing shall be applied in full sheets or in largest pieces practical for the area being covered.
2. Particleboard sheathing: ANSI A208.1 APA Oriented Strand Board; wood flakes set with waterproof resin binder; unsanded faces.
3. Secure roof sheathing perpendicular to framing members with ends staggered and sheet ends over firm bearing.
4. Secure wall sheathing with long dimension parallel to wall studs, with ends over firm bearing and staggered.
5. Install sheathing two span continuous minimum.

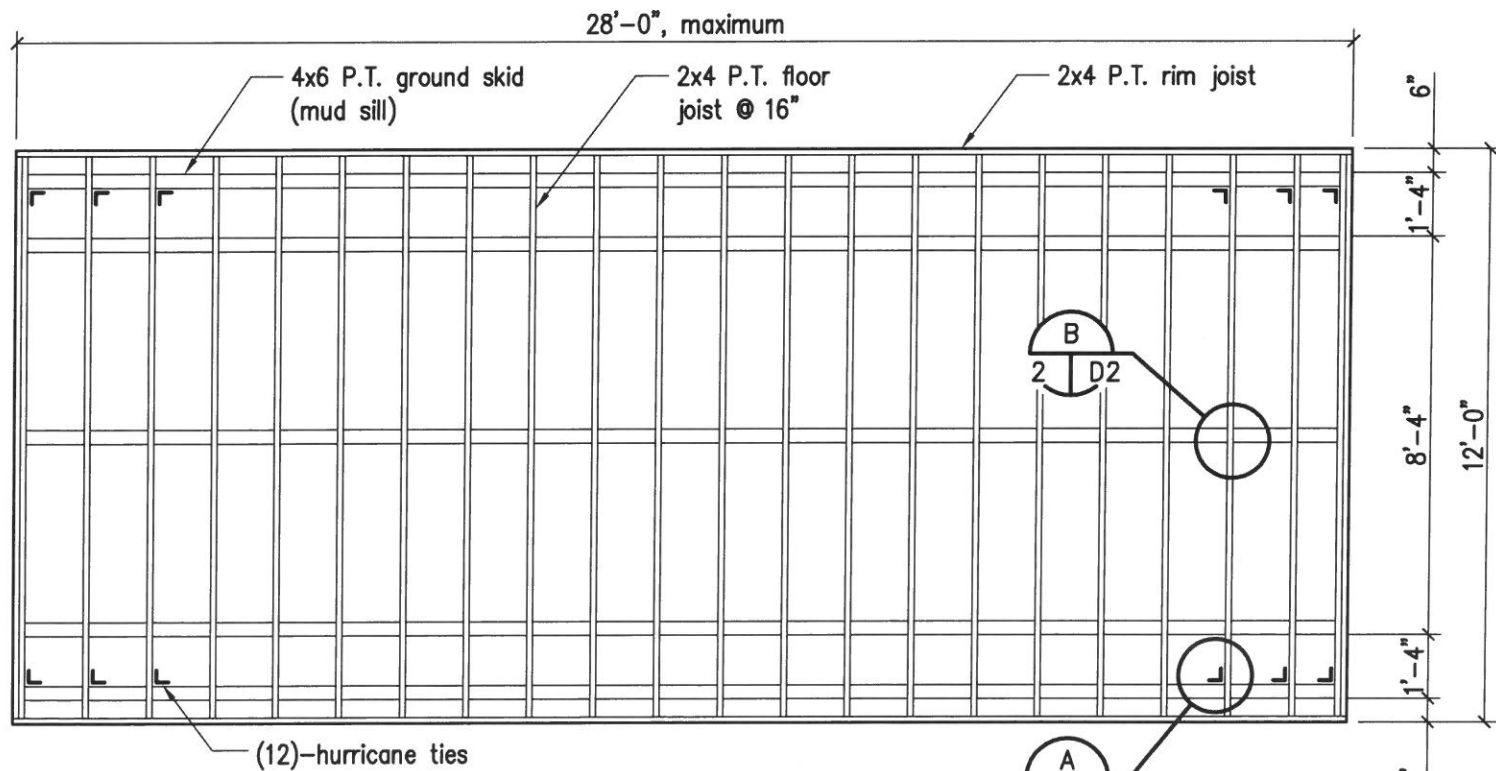
DRAWING INDEX:

- C1 Cover Sheet and General Notes
- 2 Floor and Wall Framing Plans
- 3 Roof Framing Plans and Exterior Elevations
- 4 Wall Framing Elevations and Wall Section
- D1 Details
- D2 Details



Wall Framing Plan

(Wall_Framing_Pln) Scale: 1/4"=1'-0"



Floor Framing Plan

(Flr_Framing_Pln) Scale: 1/4"=1'-0"



Greg Robinson
24 APR 19



GREG ROBINSON, P.E.
CONSULTING ENGINEER

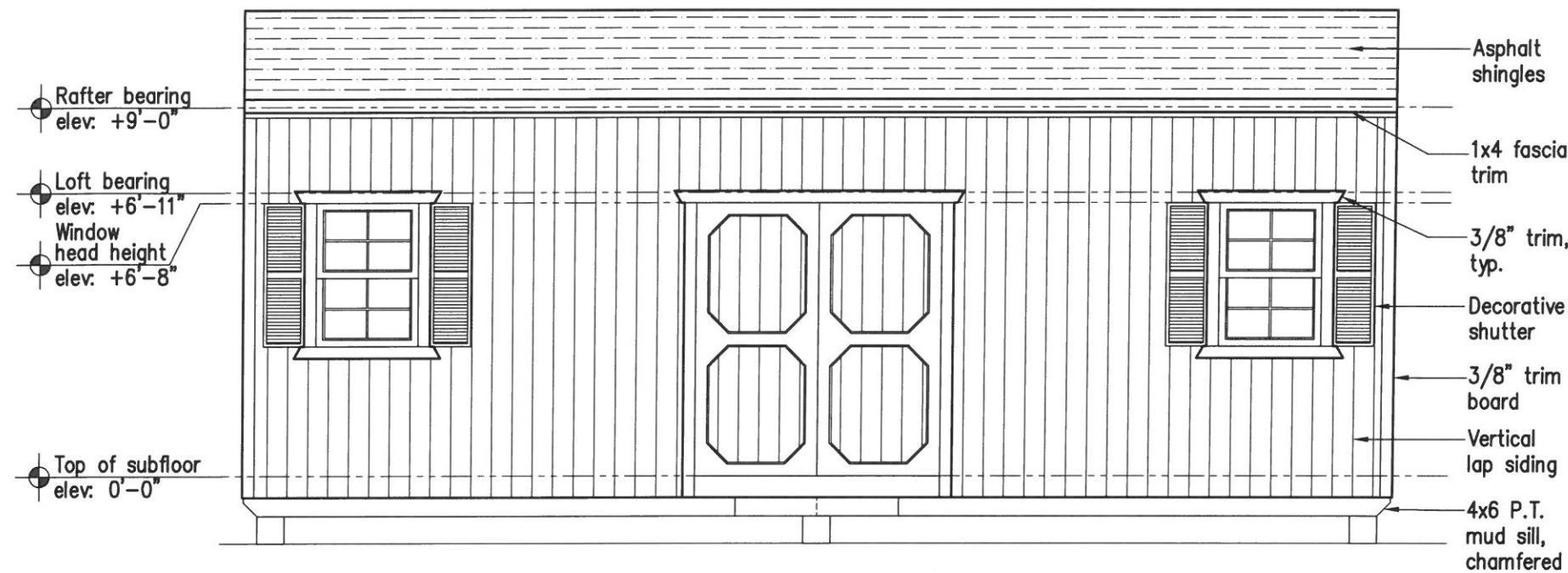
6512 Six Forks Road, Suite 403A
Raleigh, North Carolina 27615
(919) 846-4752 (919) 847-0455 fax
greg@gar-pe.com



12' x 12' to 28' x 9' Shed

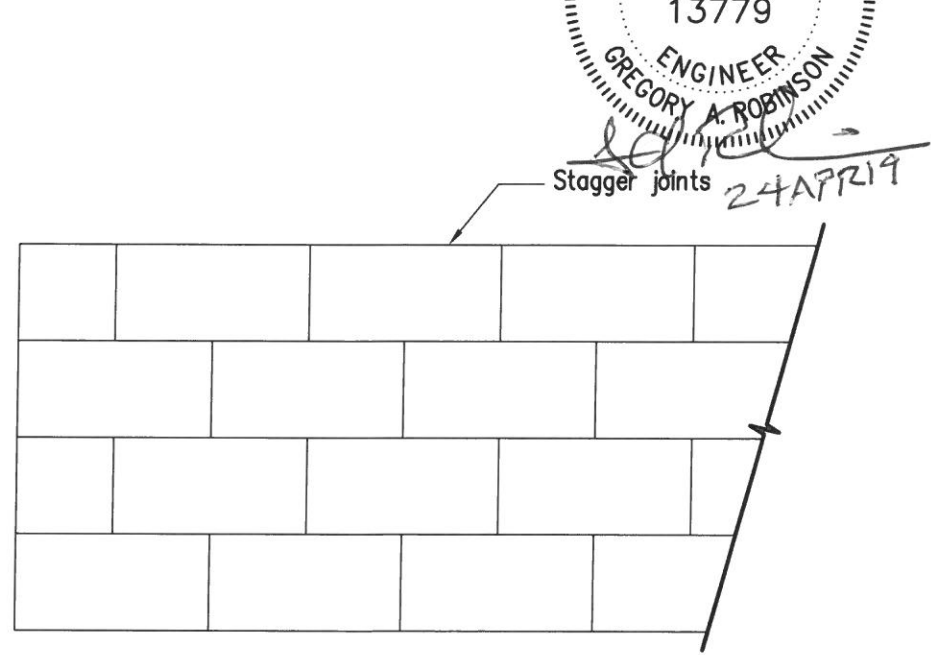
GARPE Job # 19009

Drawn	GAR
Checked	GAR
Date	27FEB19
Rev	27MAR19
Rev	



C Exterior Elevation
 2 | 3

(Ext_Elev_1) Scale: 1/4"=1'-0"

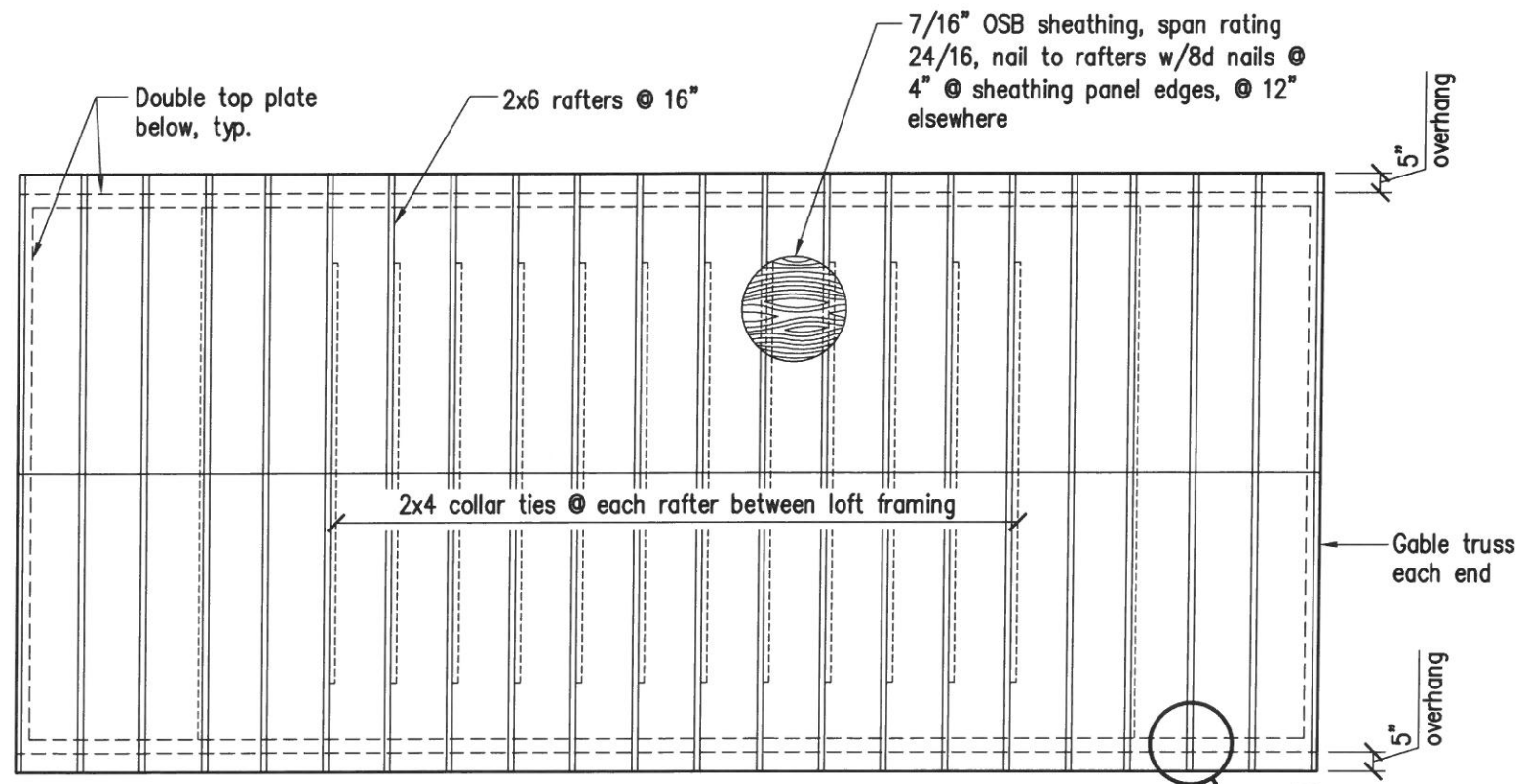


D Sheathing Joint Pattern
 2 | 3

(Sheathing_Joint_Pattern) Scale: N.T.S.

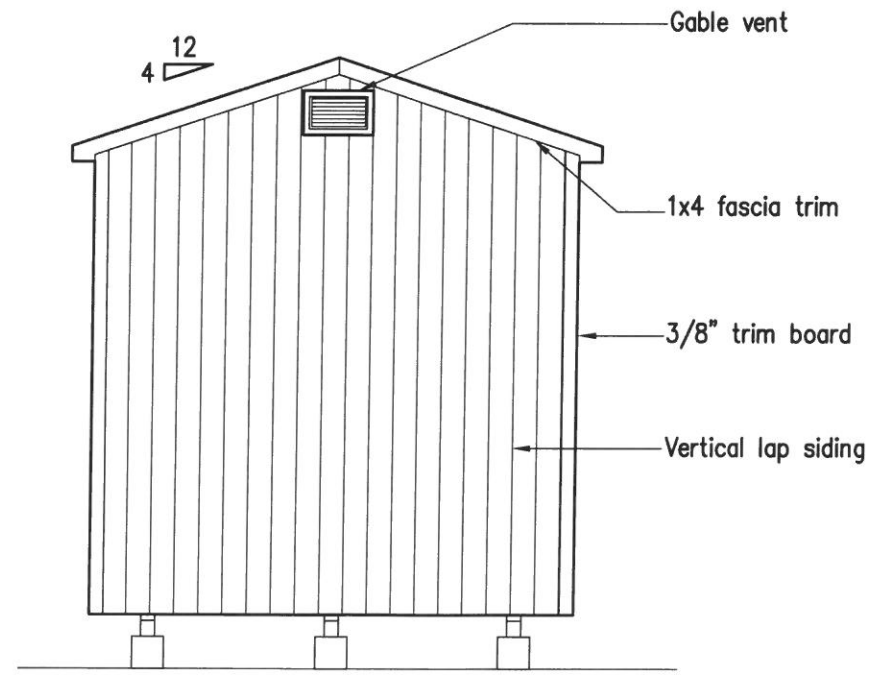


Stagger joints 24AP7219



A Roof Framing Plan
 2 | 3

(Roof_Framing_Pln) Scale: 1/4"=1'-0"



B Exterior Elevation
 2 | 3

(Ext_Elev_2) Scale: 1/4"=1'-0"

THE Shed Depot
 OF NORTH CAROLINA

GREG ROBINSON, P.E.
 CONSULTING ENGINEER

6512 Six Forks Road, Suite 403A
 Raleigh, North Carolina 27615
 (919) 846-4752 (919) 847-0455 fax
 greg@gar-pe.com



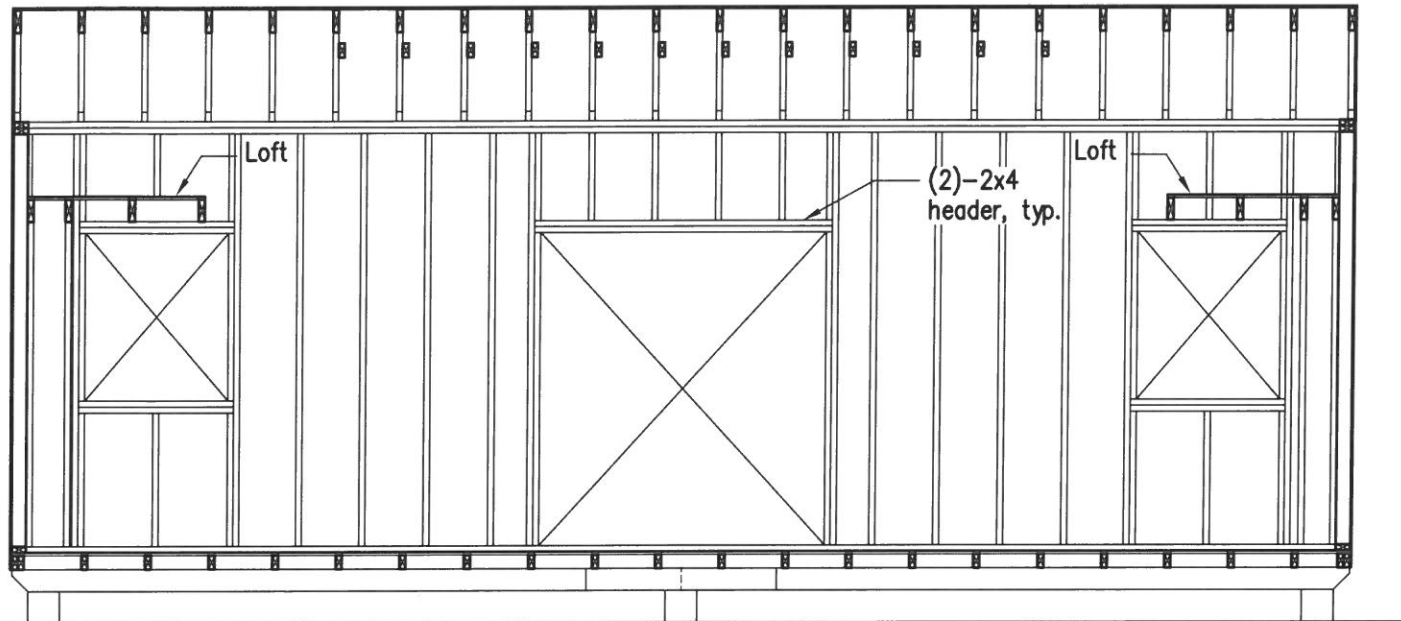
12' x 12' to 28' x 9' Shed

GARPE Job # 19009

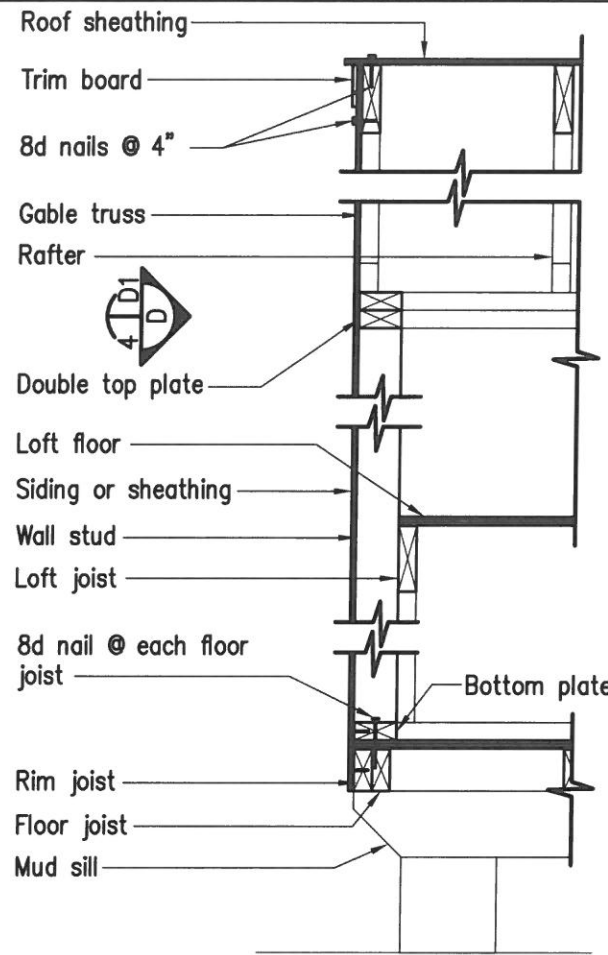
Drawn	GAR
Checked	GAR
Date	27FEB19
Rev	27MAR19
Rev	



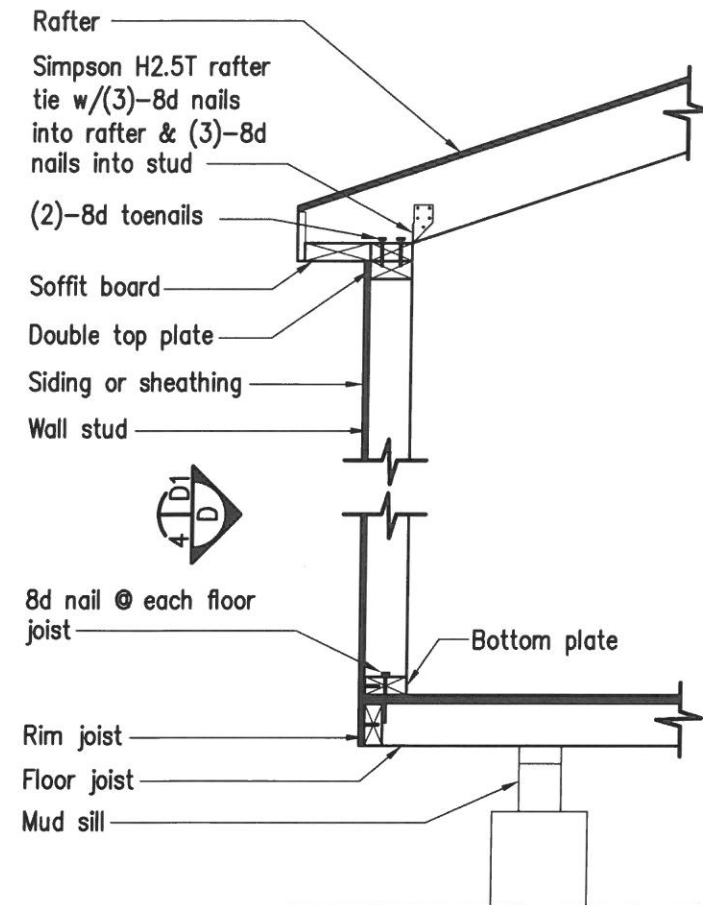
24 APR 19



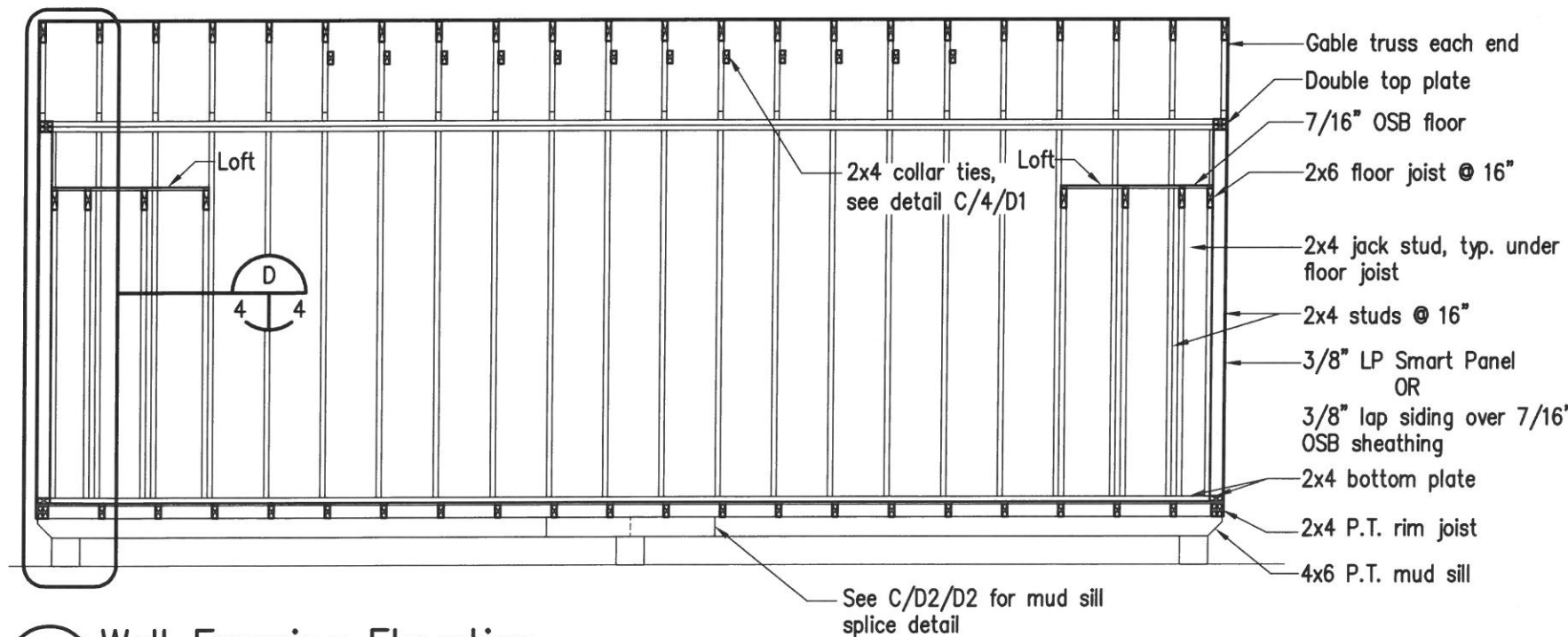
C Wall Framing Elevation
Scale: 1/4"=1'-0"



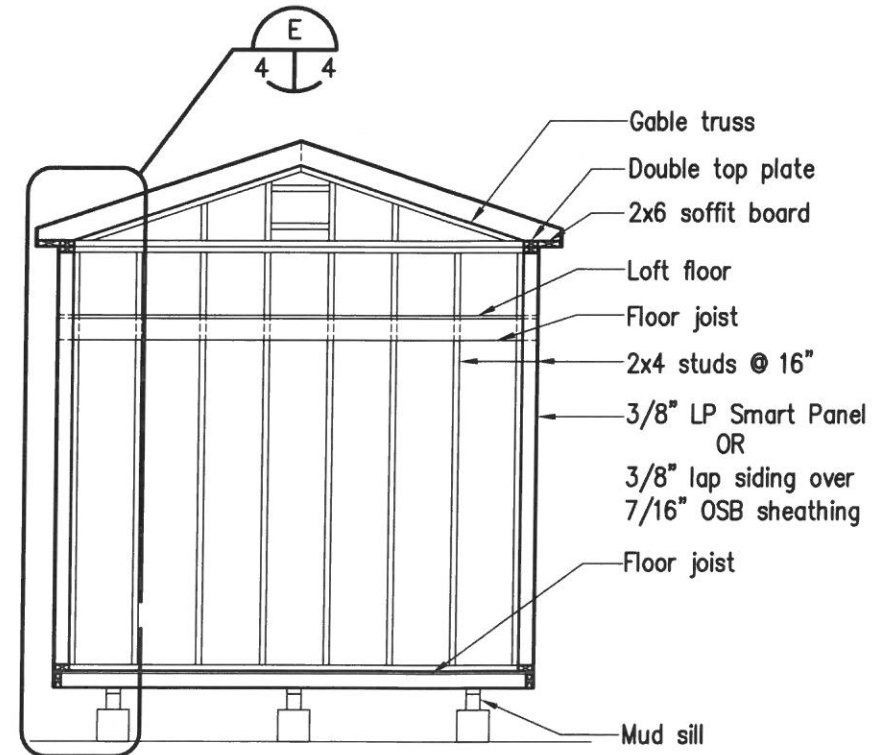
D Wall Section
Scale: 3/4"=1'-0"



E Wall Section
Scale: 3/4"=1'-0"



A Wall Framing Elevation
Scale: 1/4"=1'-0"



B Wall Framing Elevation
Scale: 1/4"=1'-0"



GREG ROBINSON, P.E.
CONSULTING ENGINEER

6512 Six Forks Road, Suite 403A
Raleigh, North Carolina 27615
(919) 866-4752 (919) 847-0455 fax
greg@gar-pe.com



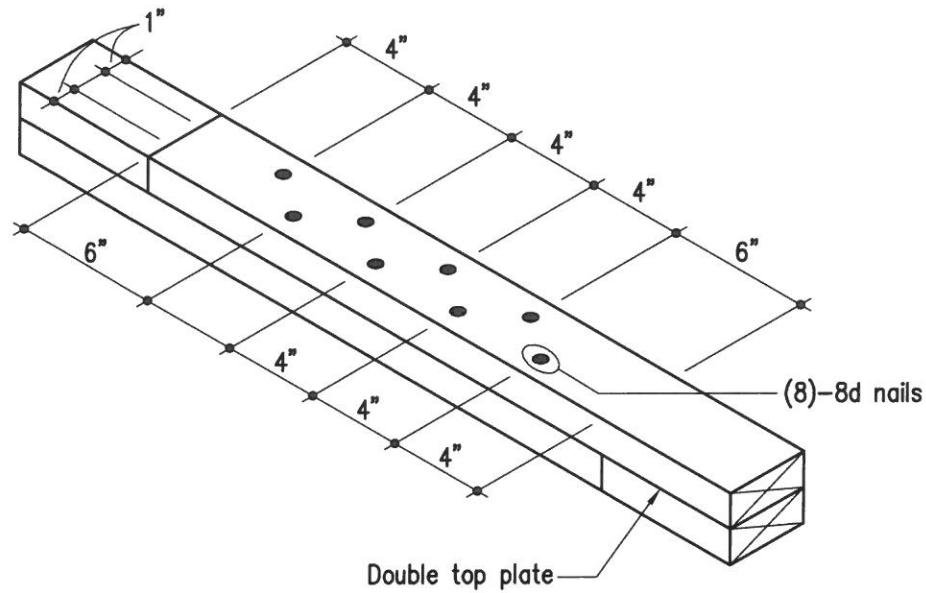
12' x 12' to 28' x 9' Shed

GARPE Job # 19009

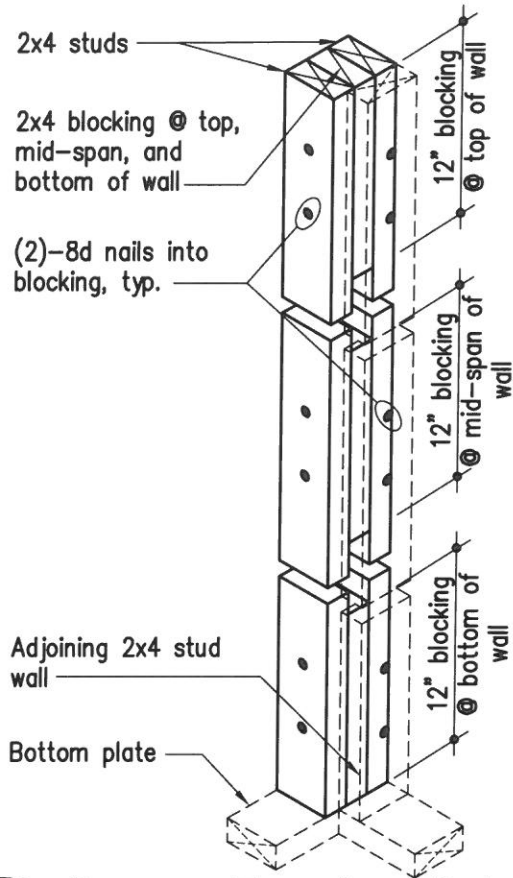
Drawn	GAR
Checked	GAR
Date	27FEB19
Rev	27MAR19
Rev	

4

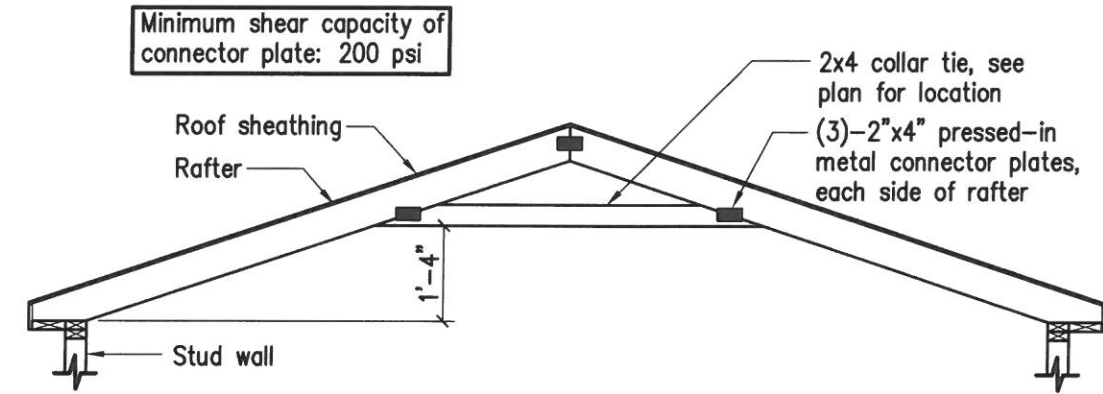
4 of 6



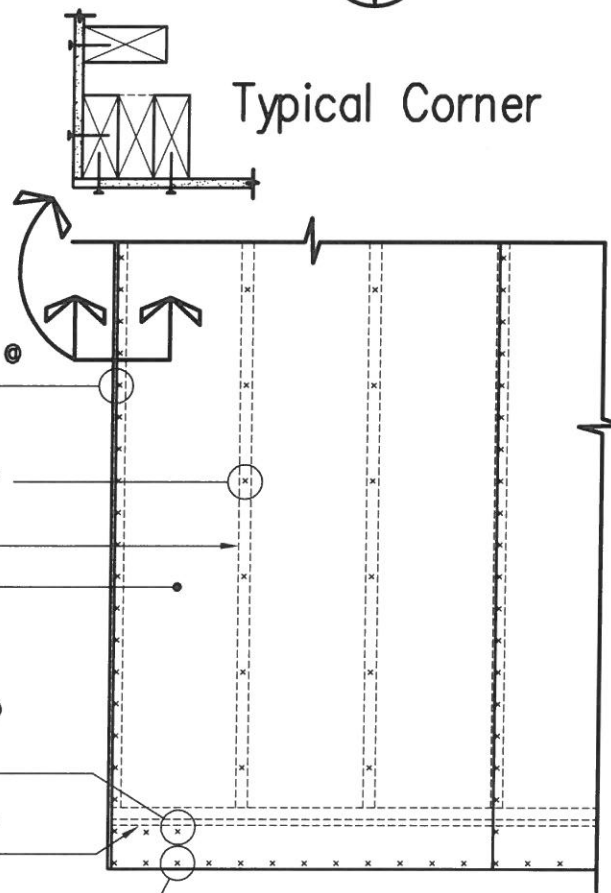
A Top Plate Splice Detail
 (Top_Plate_Splice) Scale: 1 1/2"=1'-0"



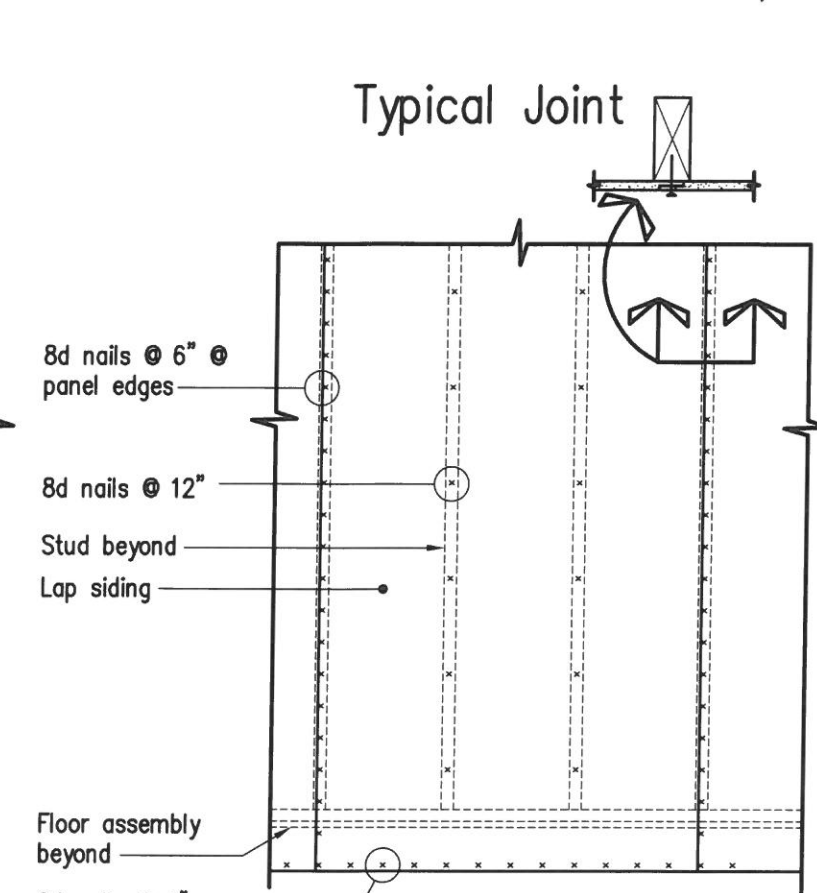
B Corner Framing Detail
 (Corner_Detail) Scale: 1"=1'-0"



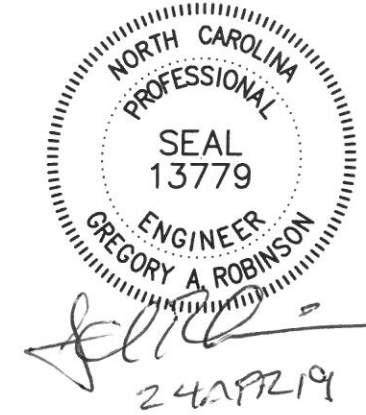
C Collar Tie Attachment Detail
 (Collar_Tie) Scale: 3/8"=1'-0"



D Panel Nailing Patterns
 (Nail_Pattern) Scale: 1/2"=1'-0"



(Nail_Pattern) Scale: 1/2"=1'-0"



THE Shed Depot
 OF NORTH CAROLINA

GREG ROBINSON, P.E.
 CONSULTING ENGINEER

6512 Six Forks Road, Suite 403A
 Raleigh, North Carolina 27615
 (919) 846-4752 (919) 847-0455 fax
 greg@gar-pe.com

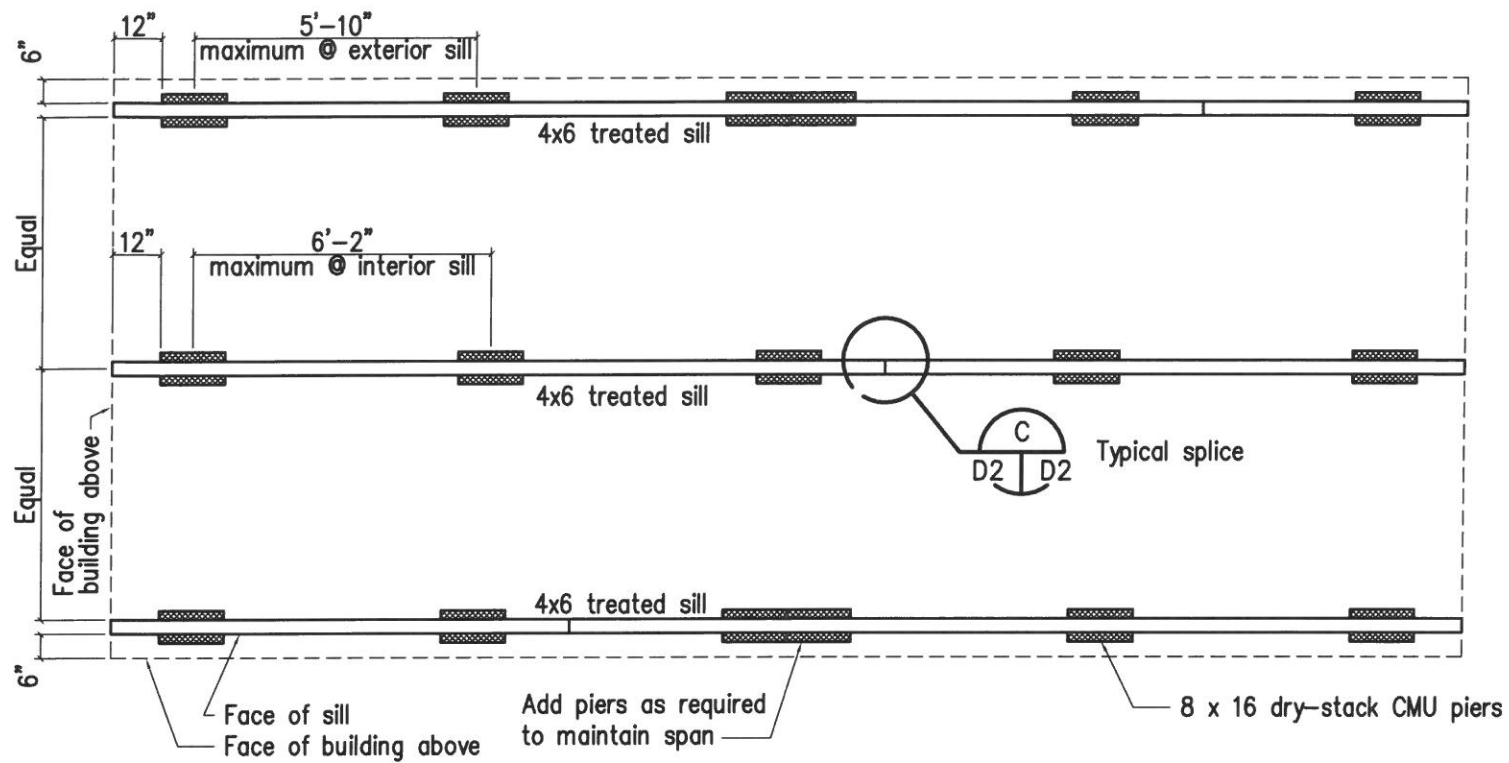


12' x 12' to 28' x 9' Shed

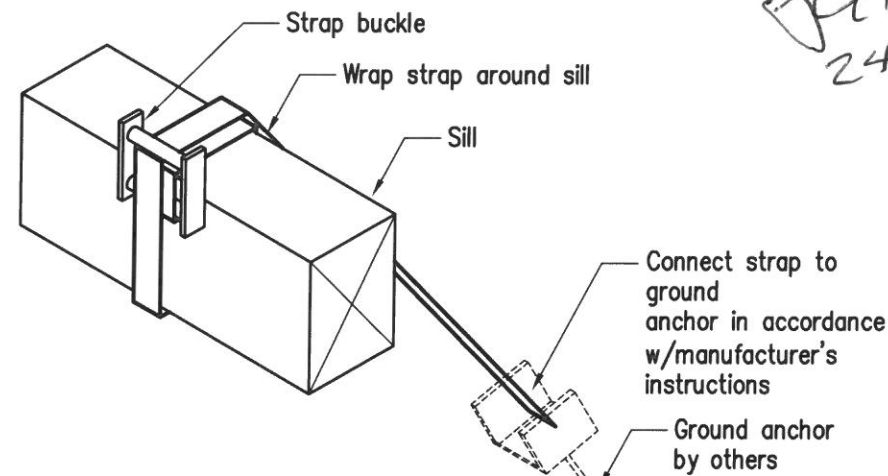
GARPE Job # 19009

Drawn	GAR
Checked	GAR
Date	27FEB19
Rev	27MAR19
Rev	

D1
 5 of 6



Floor Framing and Foundation Pier Plan, 12' x 28' (maximum)
 (SILL) Scale: 1/4"=1'-0"



Anchor Strap Detail
 (STRAP) Scale: 1 1/2"=1'-0"

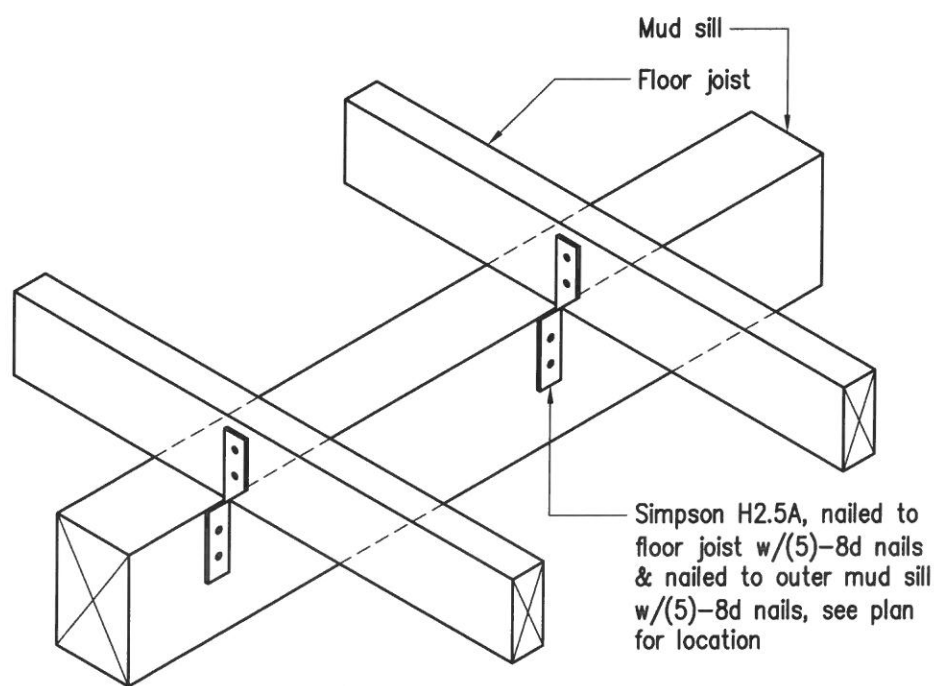
NORTH CAROLINA
 PROFESSIONAL
 SEAL
 13779
 ENGINEER
 GREGORY A. ROBINSON

Gregory A. Robinson
 24 APR 19

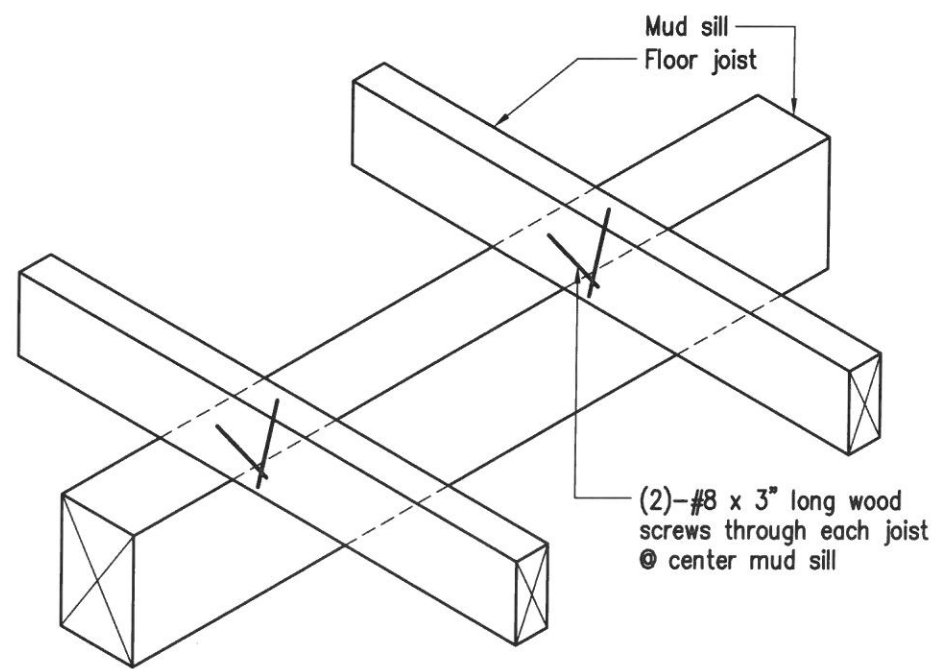
THE Shed Depot
 OF NORTH CAROLINA

GREG ROBINSON, P.E.
 CONSULTING ENGINEER

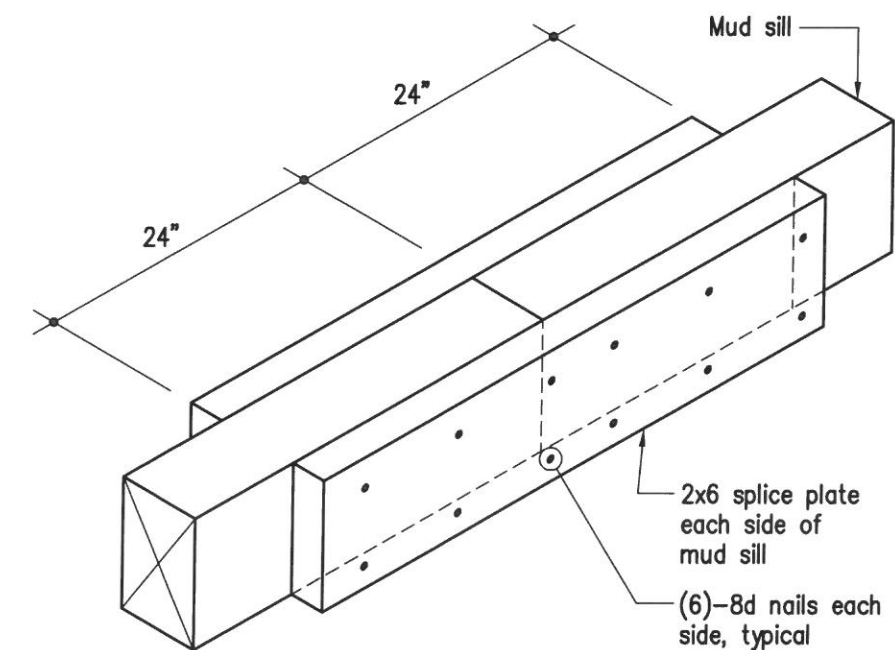
6512 Six Forks Road, Suite 403A
 Raleigh, North Carolina 27615
 (919) 846-4752 (919) 847-0455 Fax
 greg@gar-pe.com



A Floor Joist to Outer Mud Sill Connection Detail
 (Joist_Sill_Conn1) Scale: 1 1/2"=1'-0"



B Floor Joist-to-Center Mud Sill Connection Detail
 (Joist_Sill_Conn2) Scale: 1 1/2"=1'-0"



C Mud Sill Splice Detail
 (Sill_Splice) Scale: 1 1/2"=1'-0"



12' x 12' to 28' x 9' Shed

GARPE Job # 19009

Drawn	GAR
Checked	GAR
Date	27FEB19
Rev	27MAR19
Rev	

D2

6 of 6