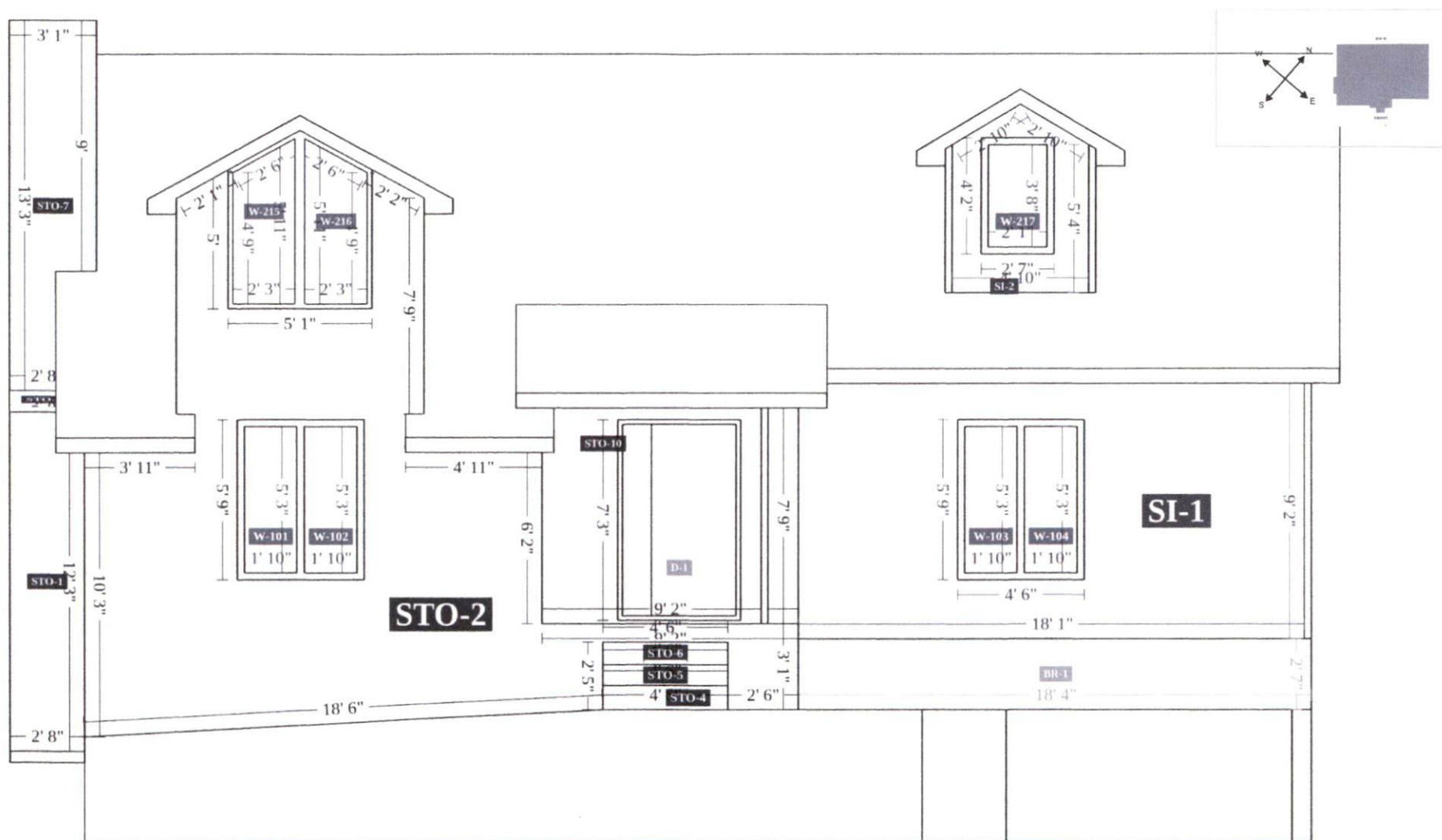




Complete Measurements

380 Wheeler Drive, Angier, NC
FRONT



Powered by

Hover

© 2025 HOVER Inc. All rights reserved. This document and the images, measurement data, format and contents are the exclusive property of HOVER. HOVER is the registered trademark of Hover Inc. All other brands, products and company names mentioned herein may be trademarks or registered trademarks of their respective holders.

Use of this document is subject to HOVER's Terms of Use and is provided "as is." HOVER makes no guarantees, representations or warranties of any kind, express or implied, arising by law or otherwise relating to this document or its contents or use, including but not limited to, quality, accuracy, completeness, reliability, or fitness for a particular purpose.

PROPERTY ID: 16320682

MODEL ID: 16318065

HANNAH

26 MAY 2025

Page 9

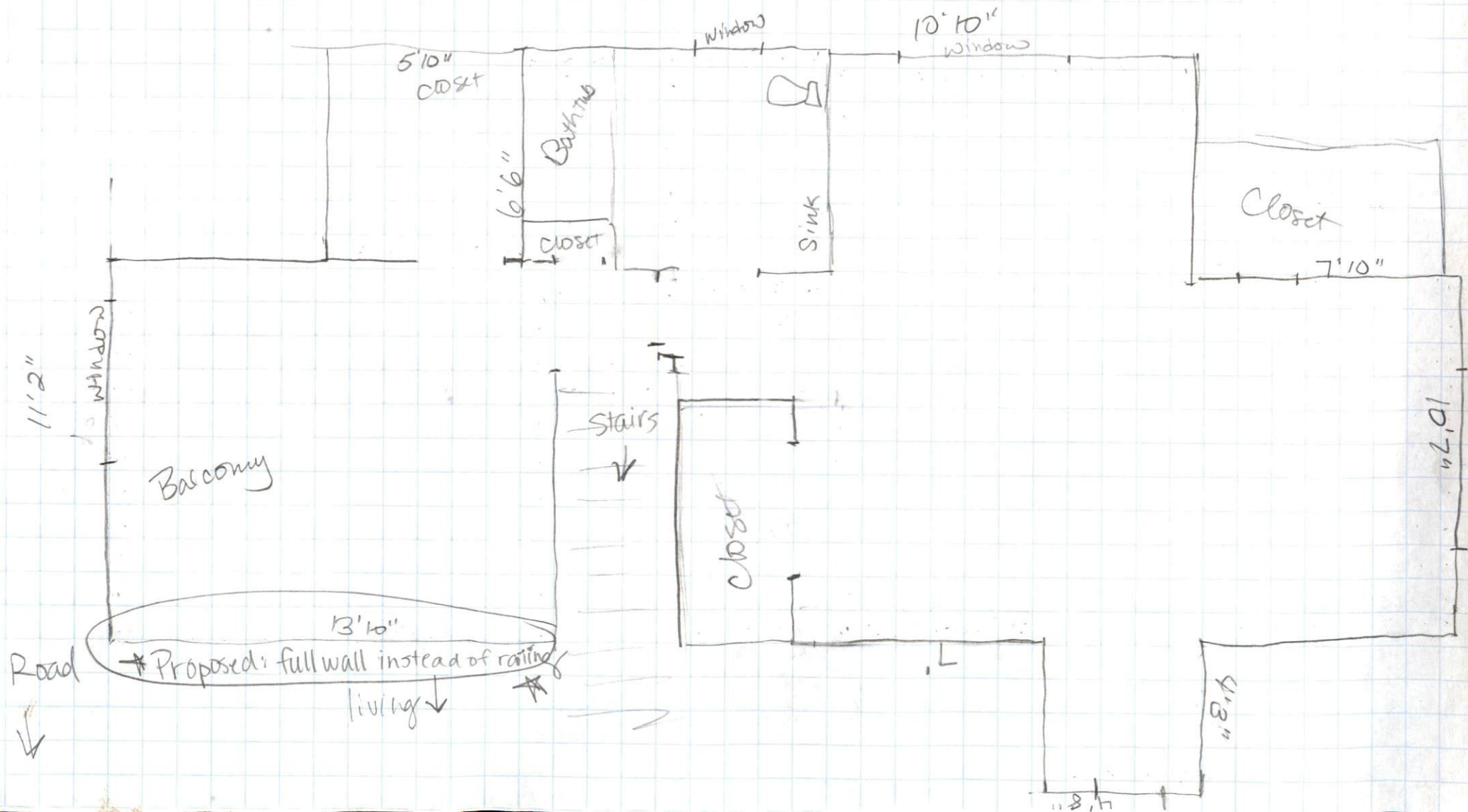


Complete Measurements

380 Wheeler Drive, Angier, NC
BACK



3rd floor
Back of house



380 Wheel Front

Basement Fin + Road

23'5"

Garage
Space

43" stairs

3'10"

4'10"

door to garage

9'4"

Back

10'4"
Garage Door

23'5"

5'4"

13'7"

Back of House

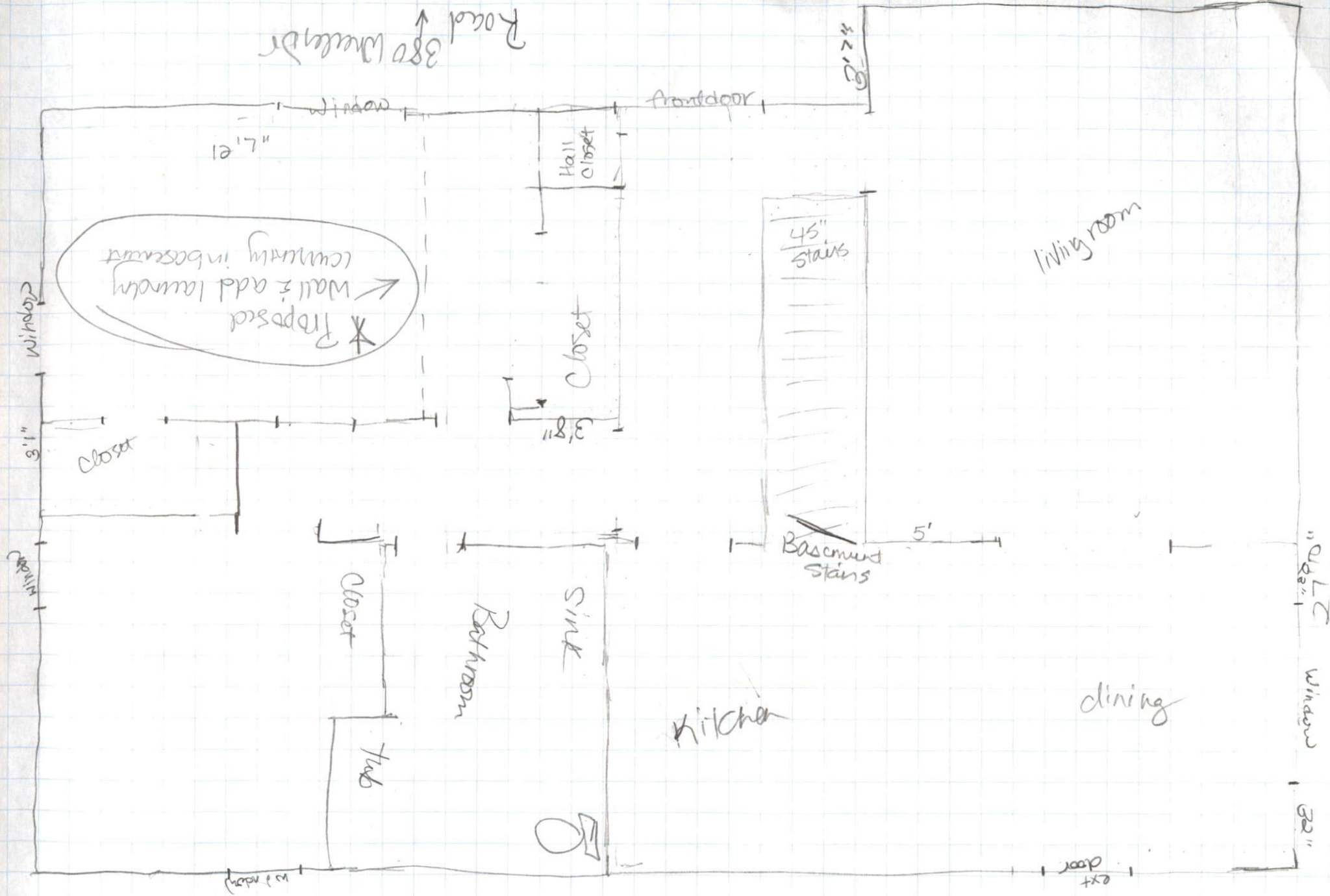
Back House

★ Finish this section

ext. door

26'6"

26'6"



Back of house