

**Lowe's Home Centers, LLC**

Sales Person: **Jamie Abbott** Sales #: **189708**

Contact: **Roman Batista** Customer #: **9842708722**

Store #: **3608** Project #: **221574915** Date Estimated: **06/24/25**

Quantity	Item #	Item Description	Vendor Part#
2	31100	2-in x 6-in x 10-ft #2 BTR Spruce Pine Fir Kiln-Dried Lumber	31100
3	78045	2-in x 10-in x 10-ft #2 Prime Southern Yellow Pine Kiln-Dried Lumber	2P021010S4
26	29003	2-in x 4-in x 16-ft #2 BTR Spruce Pine Fir Kiln-Dried Lumber	29003
26	33789	2-in x 6-in x 16-ft Spruce Pine Fir S4S Kiln-dried Lumber	LUMBER
32	12212	7/16-in x 4-ft x 8-ft OSB Sheathing	646214
1	894298	#10 x 3-in Wood to wood Deck Screws ( 1550 -Per Box )	48420

Total For Items \$1,472.32

\*Freight Charges \$0.00

\*Delivery Charges \$0.00

\*Tax Amount \$0.00

\*Total Estimate \$1,472.32

\*Freight, Delivery and Taxes will be calculated at checkout.

**The quote is valid until 07/01/2025.**

\_\_\_\_\_  
Manager Signature

\_\_\_\_\_  
Date

THIS ESTIMATE IS NOT VALID WITHOUT MANAGER'S SIGNATURE. THIS IS AN ESTIMATE ONLY. DELIVERY OF ALL MATERIALS CONTAINED IN THIS ESTIMATE ARE SUBJECT TO AVAILABILITY FROM THE MANUFACTURER OR SUPPLIER. QUANTITY, EXTENSION, OR ADDITION ERRORS SUBJECT TO CORRECTION. CREDIT TERMS SUBJECT TO APPROVAL BY LOWES CREDIT DEPARTMENT.

2xFRONT WALL

2xBACK WALL

2xSIDE WALL

SIDE WALL

DOUBLE PLATES

TRUSS

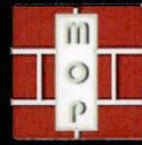
WALLS

Learn how Peptide Sciences™ Research Can Enhance Healthspan & Longevity with Free eBook Peptide Sciences

Download

- 3 pieces of 2×6 lumber – 10'
- 4 pieces of 2×10 lumber – 10'
- 26 pieces of 2×4 lumber – 14'
- 26 pieces of 2×6 lumber – 12'
- 32 pieces of 1/2" plywood – 4'x8'
- anchor bolt
- 3 1/2" screws
- 8d nails, 16d nails
- truss plate, truss plate
- rafter ties





**MOUTDOY PLANS**



Home > 24x24 > 24x24 Double Garage Plans

## 24x24 DOUBLE GARAGE PLANS

written by Ovidiu | 11 minutes read



START

1. Click on "Start"
2. Activate your account
3. Access your content



This step by step diy project is about **24x24 double detached garage plans**. I have designed the garage with a gable roof, so you can build a sturdy structure with a gable roof, in your yard. This plan features two 9' garage doors to the front, one 3' side door and one 4'x4' window. Plan everything from the beginning and build a strong foundation for the garage, in order to build a durable garage. Read local building codes and adjust my plans to comply with the legal requirements

It is essential to choose the right materials before starting the construction and the assembly of the garage. As you will see in the project, you need to choose durable lumber with a nice appearance, such as redwood. Make sure the components are in a good visual condition and choose professional tools for adjusting their size. Take accurate measurements and join the components with glue and screws.


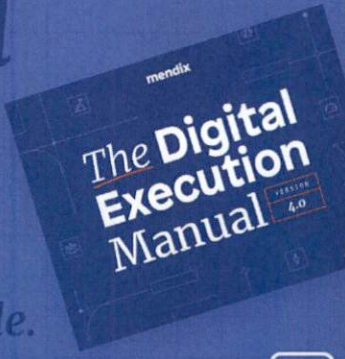

**Premium Plans [HERE](#).**



**Successful**  
**Digital**  
**Execution**

*Doable. Repeatable. Scalable.*

Download your manual



## AI Low Code

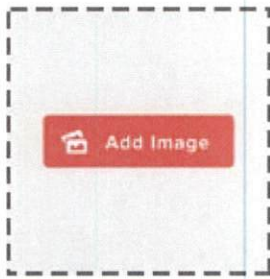
This is what digital transformation  
looks like in the industrial industry

Mendix

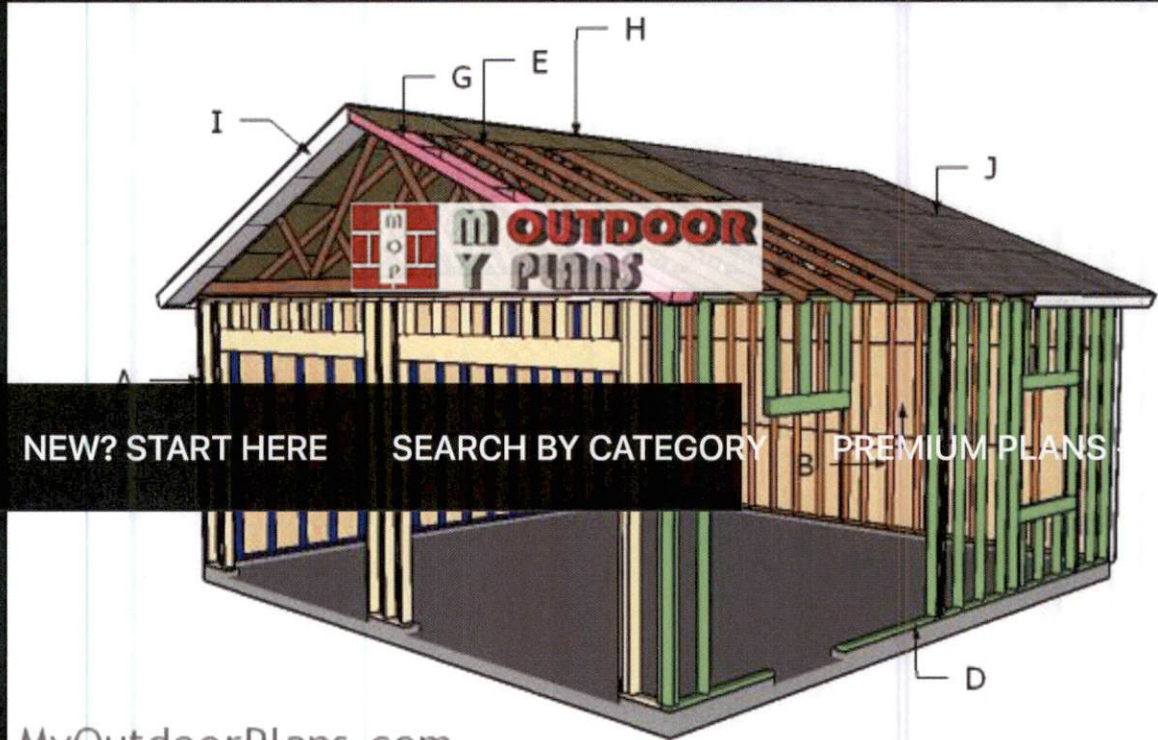
Download



Projects made from these plans



## 24x24 Double Garage Plans – Free PDF Download



[HOME](#)

[NEW? START HERE](#)

[SEARCH BY CATEGORY](#)

[PREMIUM PLANS](#)

MyOutdoorPlans.com

*Building a 2-car 24x24 carport*

[Cut & Shopping Lists](#)




## Tools

 Hammer, Tape measure, Framing square, Level

 Miter saw, Drill machinery, Screwdriver, Sander

 Safety Gloves, Safety Glasses

## Time

 One day

## Related

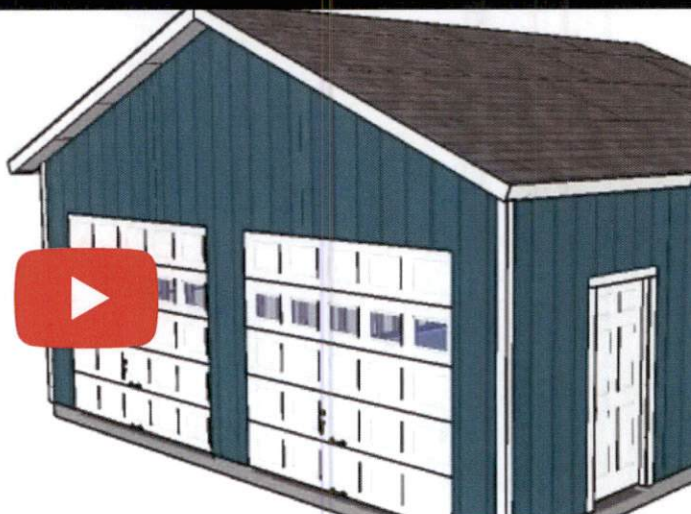
- Part 1: 16×24 Detached Garage Plans
- Part 2: **16×24 Detached Gable Garage Roof Plans**

## 24×24 Double Garage Plans

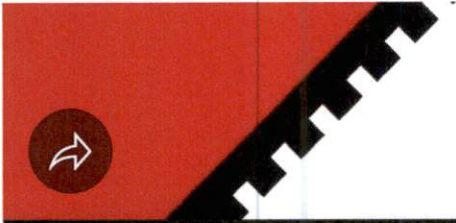



MyOutdoorPlans

**24x24  
Garage**





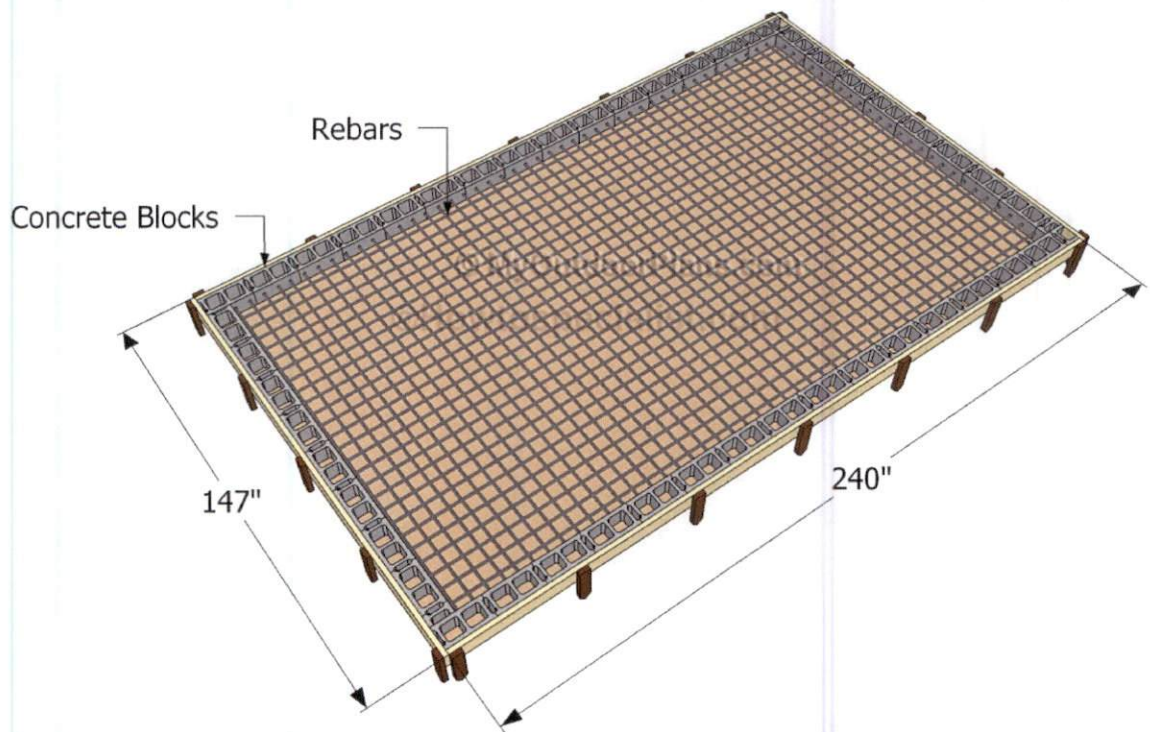


Watch on 

on Pinterest      follow me on Facebook

Support Us

## Building a 24x24 2 car detached garage



*Building the concrete slab*

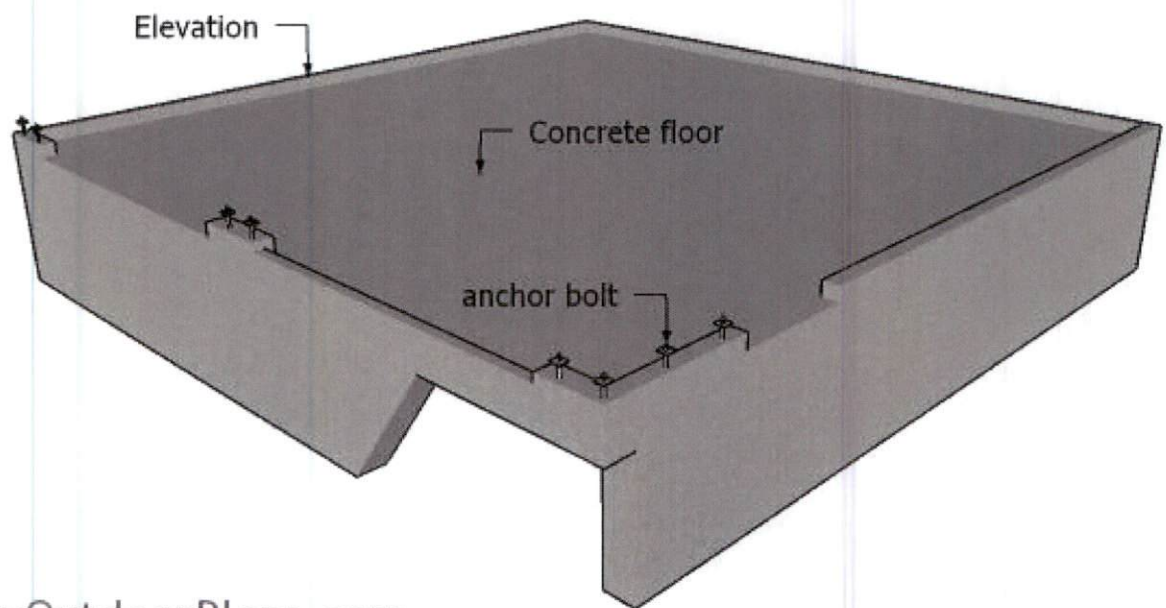


START

1. Click on "Start"
2. Activate your account
3. Access your content



myoutdoorplans.com



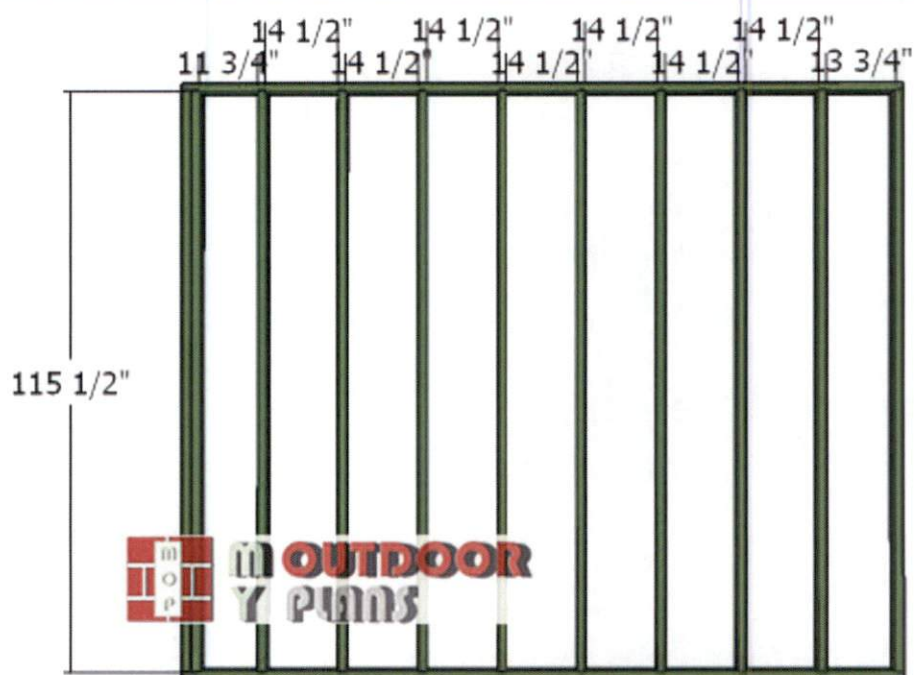
MyOutdoorPlans.com

*Garage Foundation*

As you can notice in the plans, the footings should have a small elevation as compared to the co



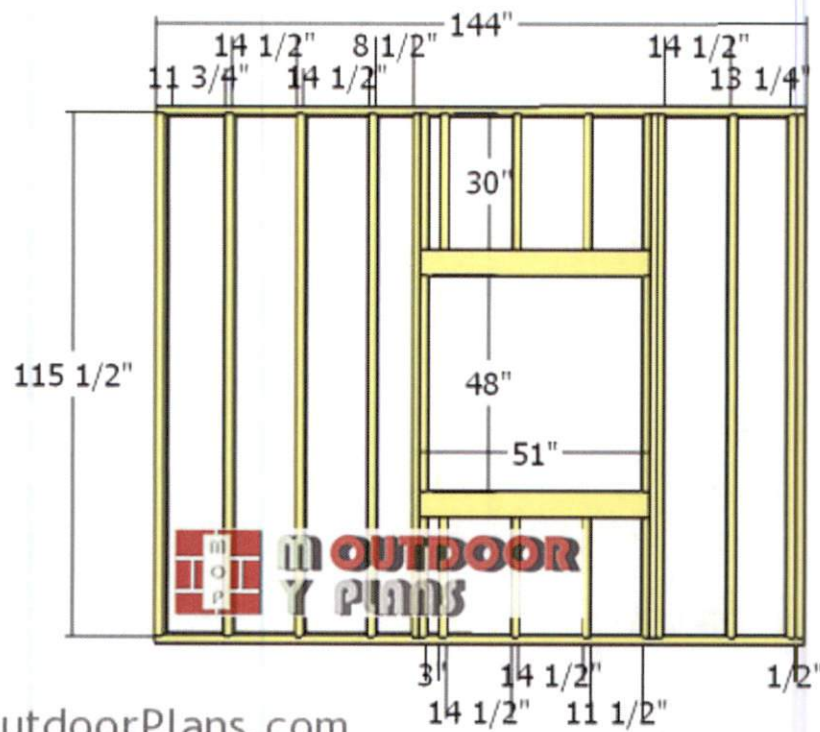
Notice that the elevations are flush with the floor at the door openings. Notice the anchors that g  
elevations, every 4' or so. You will secure the walls to the footings using these bolts.



MyOutdoorPlans.com

Side-wall-frame

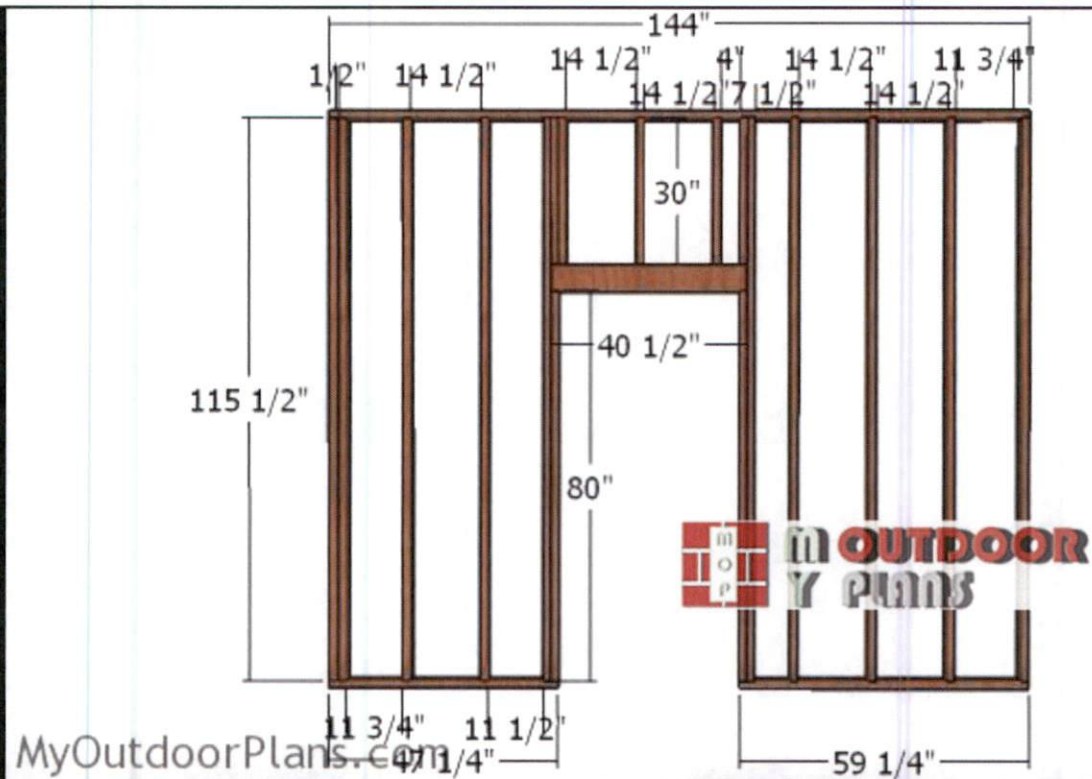




*Side-wall-frame-with-window*

Next, build the first section of the opposite side wall. As you can see in the plans, you should frame a window opening to the wall frame. This window will let the light inside the garage. You can adjust the window to suit your needs, or add even more openings. Notice the double 2×6 headers (fit 1 between the 2×6 boards).

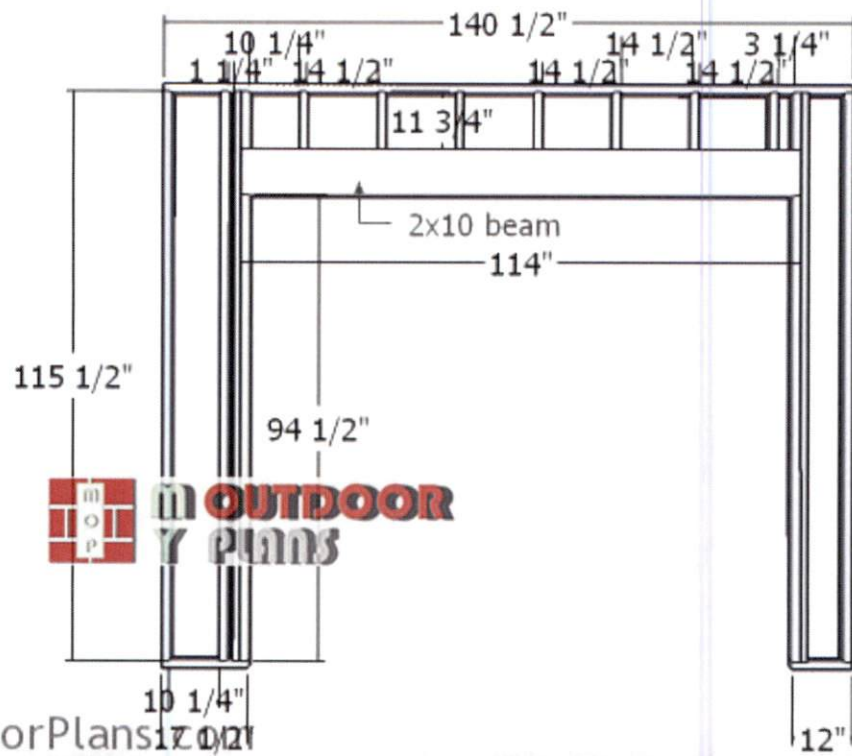




*Side-wall-with-door-frame*

Next, frame the other section for the side wall. Frame a door opening so you can have easy access to the garage. I have framed the door opening at 37 1/2"x80" so you can fit a standard 36"x80" door. Make sure you adjust the opening to suit your needs, using the same techniques described above for the double header.



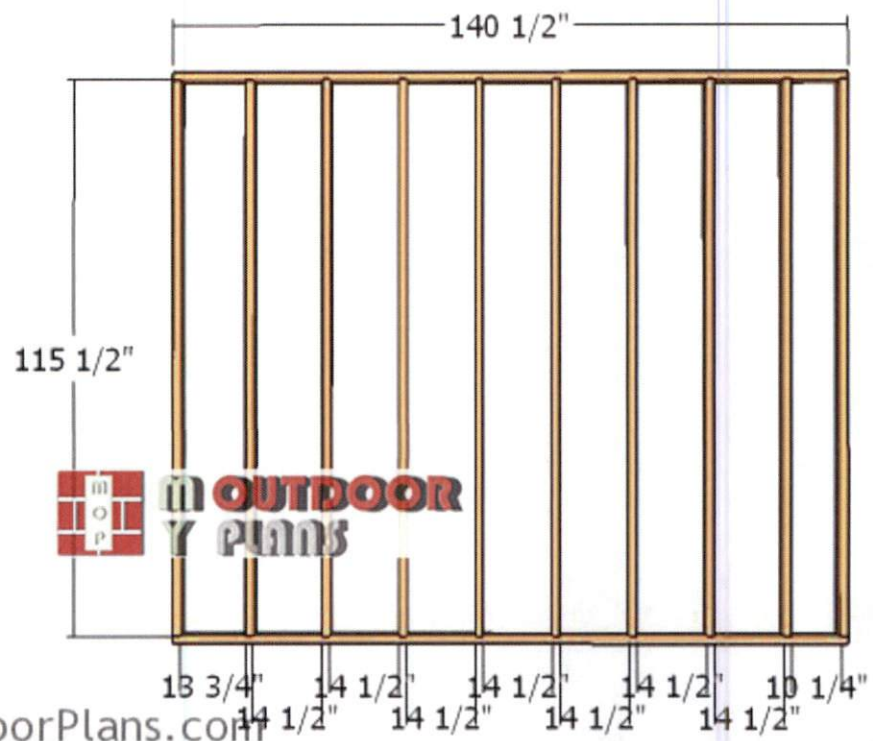


MyOutdoorPlans.com

Front-wall-frame-2-car-garage

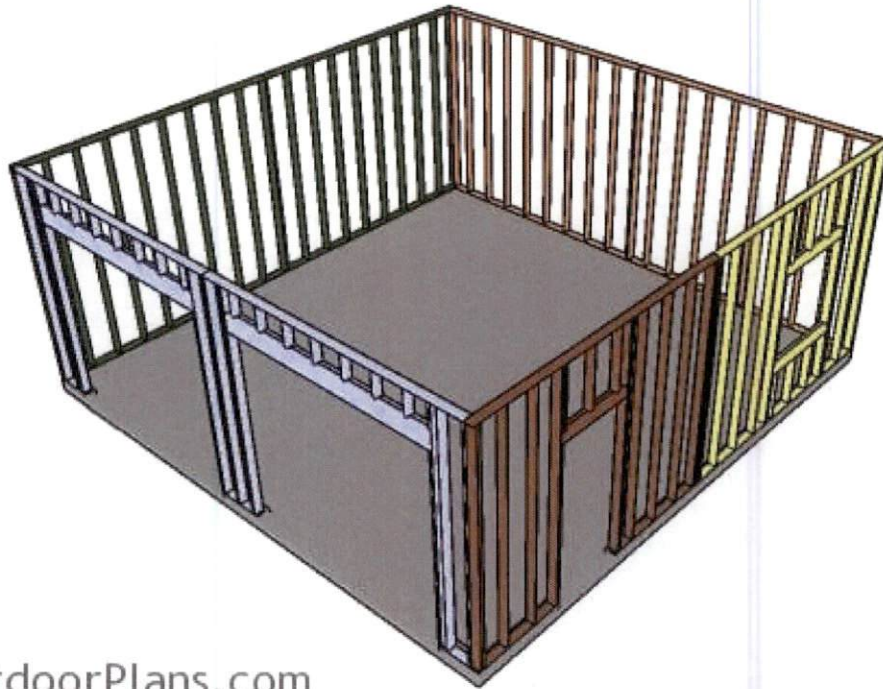
# START

1. Click on "Start"
2. Activate your account
3. Access your content



*Back-wall-frame*

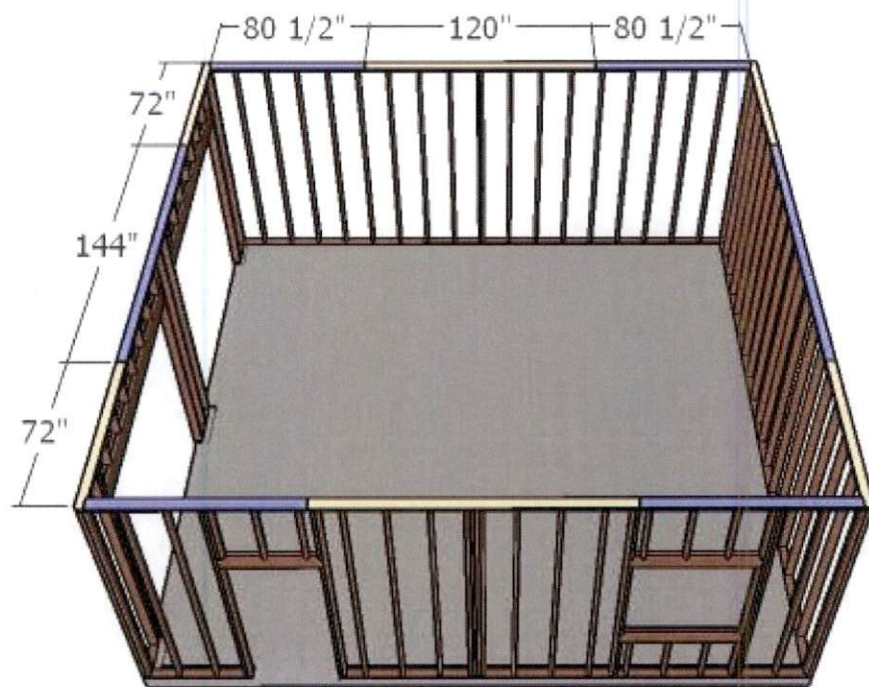




MyOutdoorPlans.com

*Assembling the frame of the garage*

After building the front, back and side walls of the garage, we recommend you to assemble the side walls and lay them to the concrete elevations, as described in the diagram. Make sure the walls are square and use temporary braces to lock them together. Drill pilot holes through the plates and insert anchors. In addition, lock the adjacent walls together by inserting 3 1/2" screws. Leave no gaps between the frames and use a spirit level to plumb the walls, for a professional result.

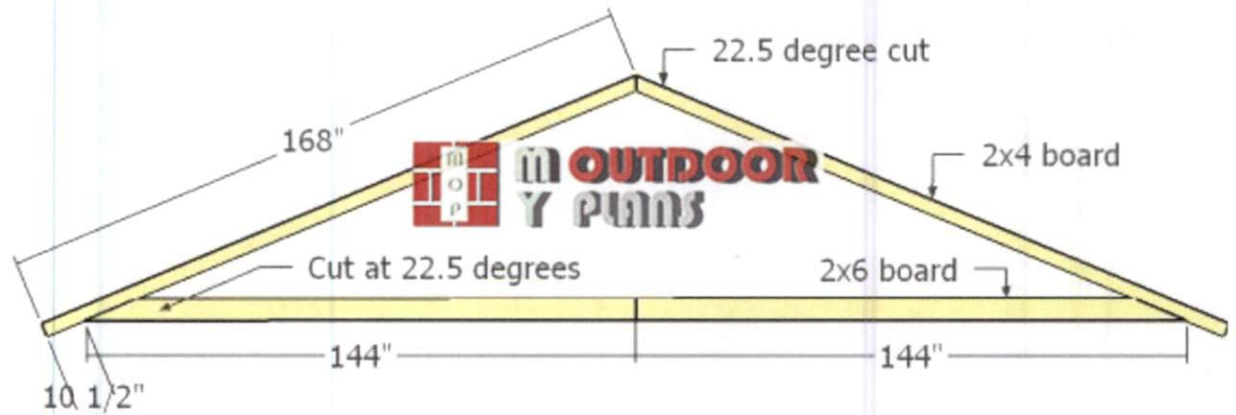


MyOutdoorPlans.com

#### *Fitting the double plates*

Fit the double plates to the top of the garage wall framing. Use the pattern shown in the plans so strength to the structure. Align the edges with attention, drill pilot holes and insert  $3\frac{1}{2}"$  screws into place tightly.

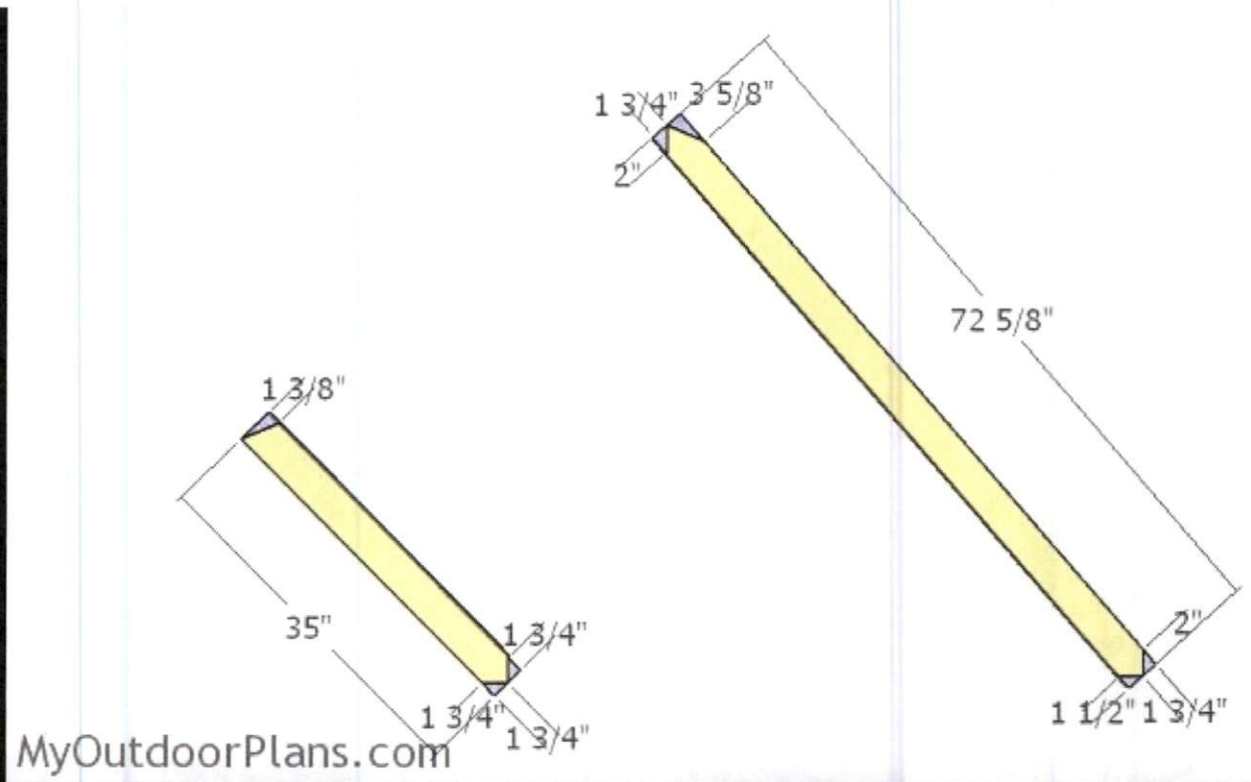




MyOutdoorPlans.com

#### *Building the 24-truss*

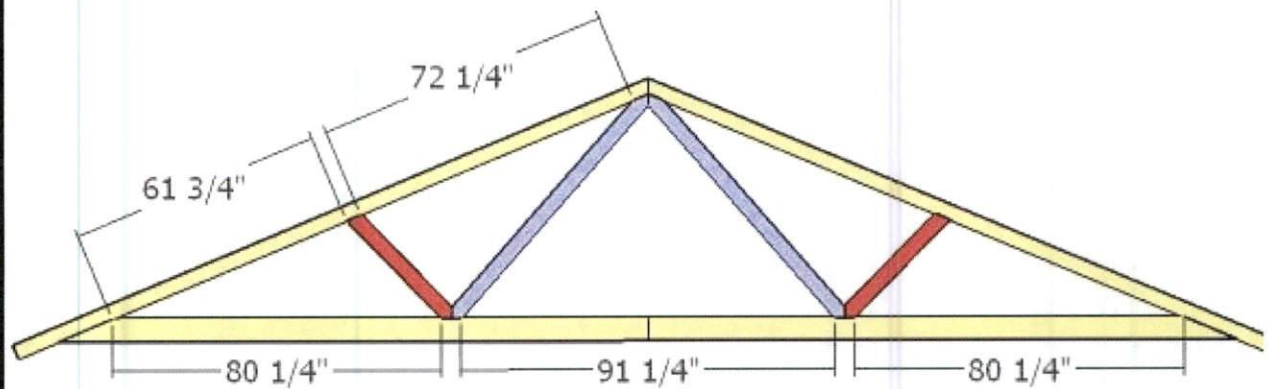
Next, build the trusses for the double garage. As you can see in the diagram, you need to use 2x4 lumber for the rafters and 2x6 lumber for the bottom chords. Use a miter saw to make the angle cuts to the rafters on a level surface and leave no gaps between the components. Place the rafters against the edge.



### *Building the W truss supports*

Use 2x4 lumber for the W shaped truss supports. Use a miter saw to make the angle cuts to both supports.



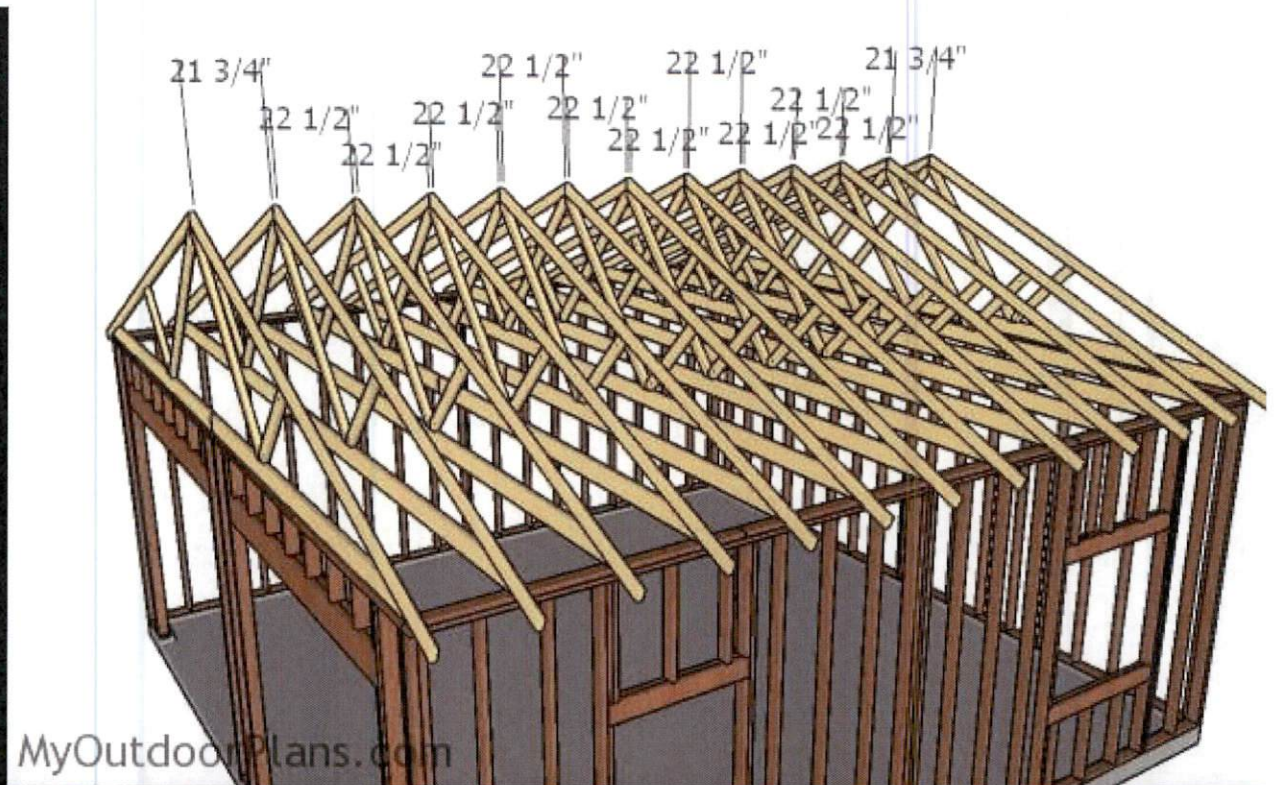


MyOutdoorPlans.com

#### *Fitting the W supports to the trusses*

Fit the supports to the trusses as shown on the diagram. Use metal plates over the joints to assure everything together tightly. Notice the joint between the two boards of the bottom chord. Make sure it complies with your local chords.

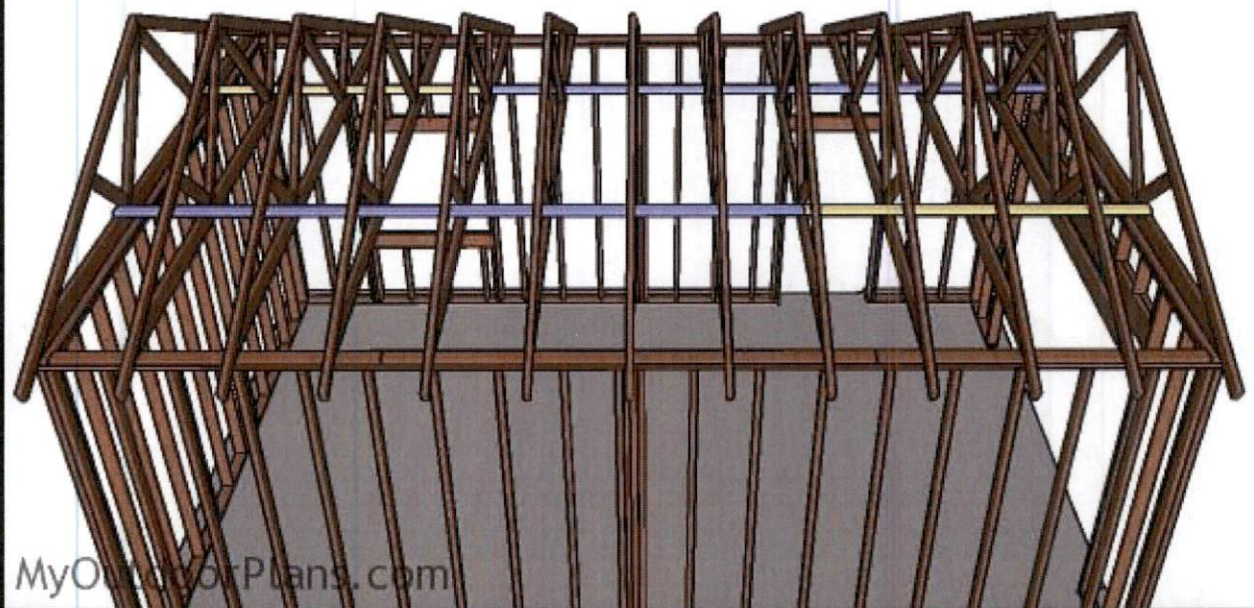
Personally, I strongly recommend you to buy engineered trusses and you will probably get them at a lower price as building them yourself. In addition, you will save labor time and they will be properly built and designed for your local conditions.



#### *Fitting the trusses*

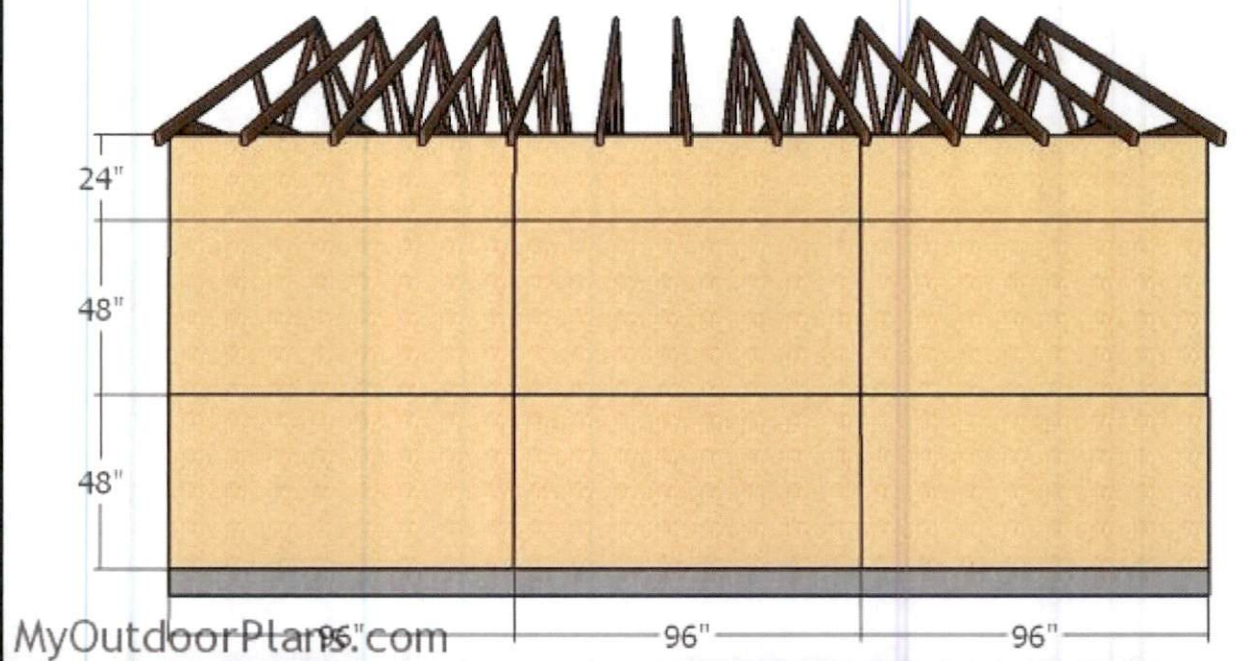
Fit the trusses to the top of the garage frame, every 24" on center. Plumb the trusses with a spirit level, then lock them to the top plates with rafter ties.





*Fitting the truss supports*

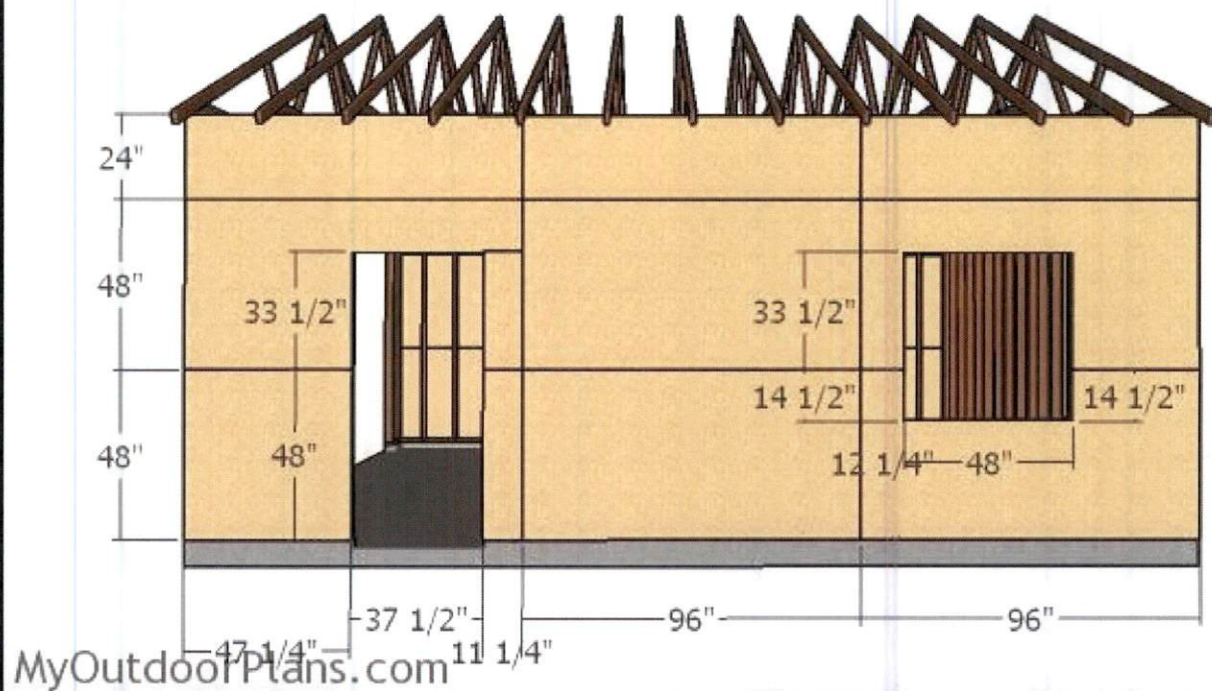
Fit 2×4 supports to the bottom chords to enhance the rigidity of the structure. Drill pilot holes and screws or 16d nails.



*Side wall sheets – 24×24 Garage Plans*

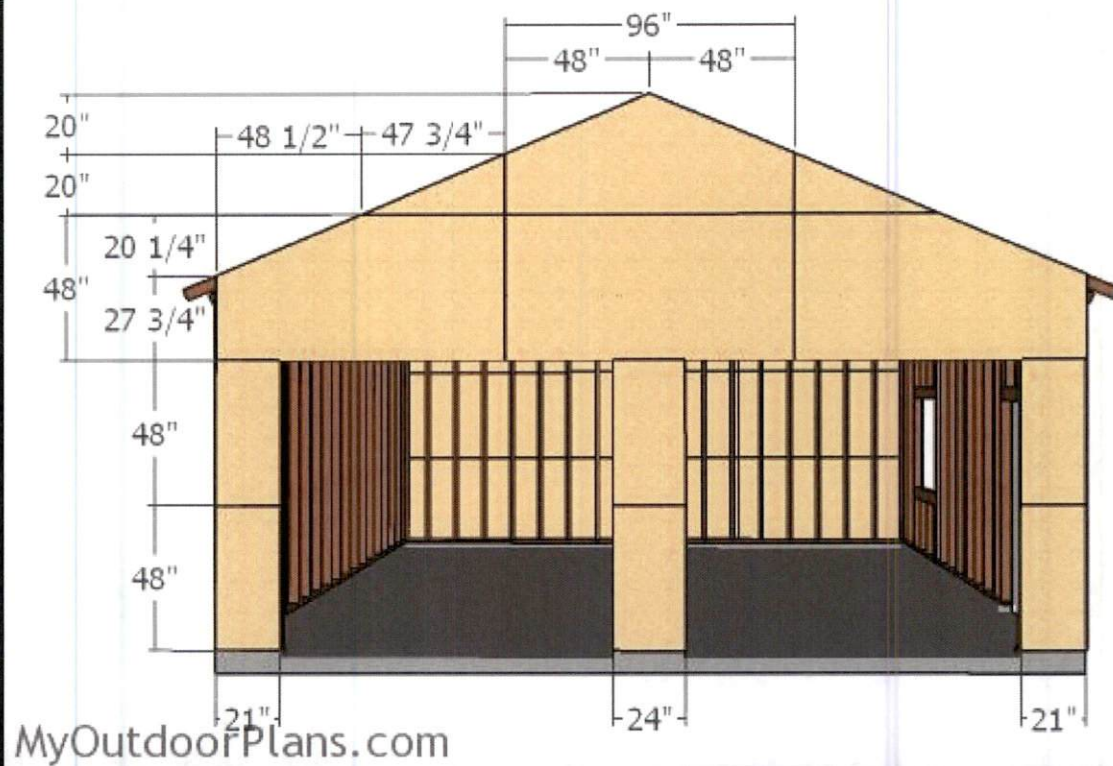
The next step of the garage is to attach the 1/2" plywood sheets to the side wall. Align the edges with no gaps between the sheets and insert 8d nails, every 8" along the framing.



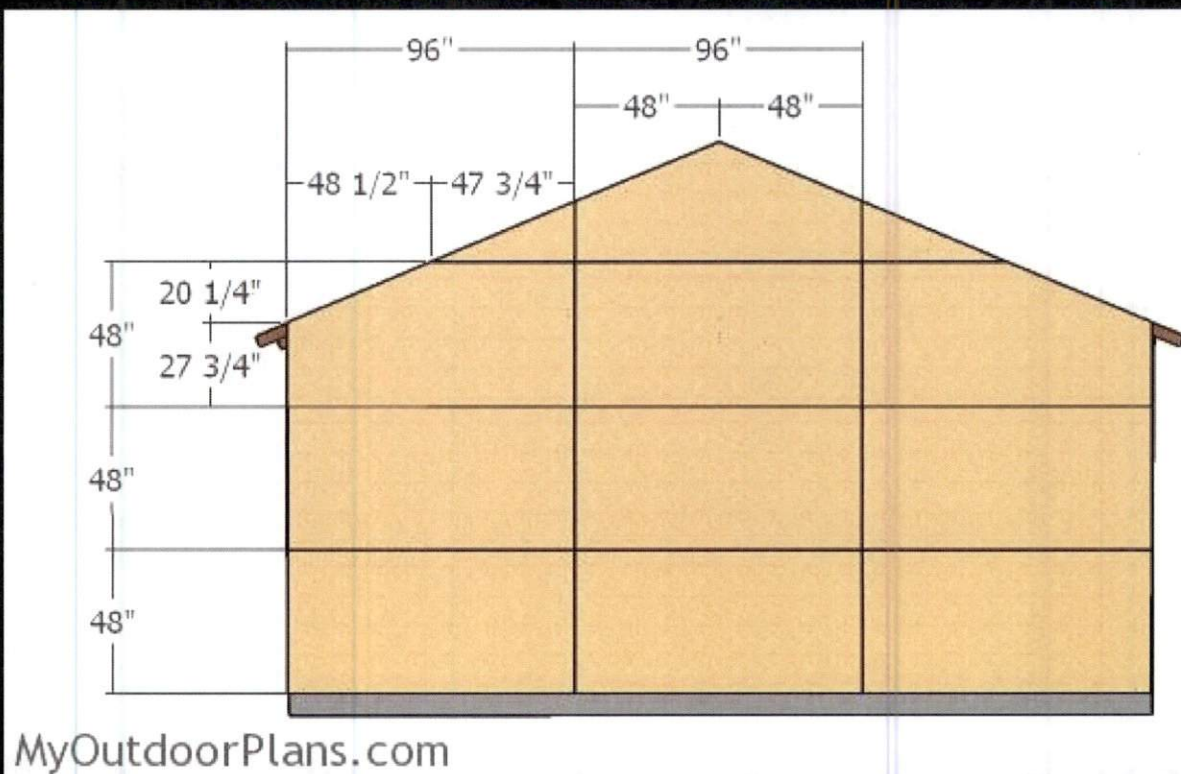


*Side wall with window sheets – Double Car Garage Plans*

Fit the plywood sheets to the opposite side wall. Use a saw to make the cuts around the window openings.



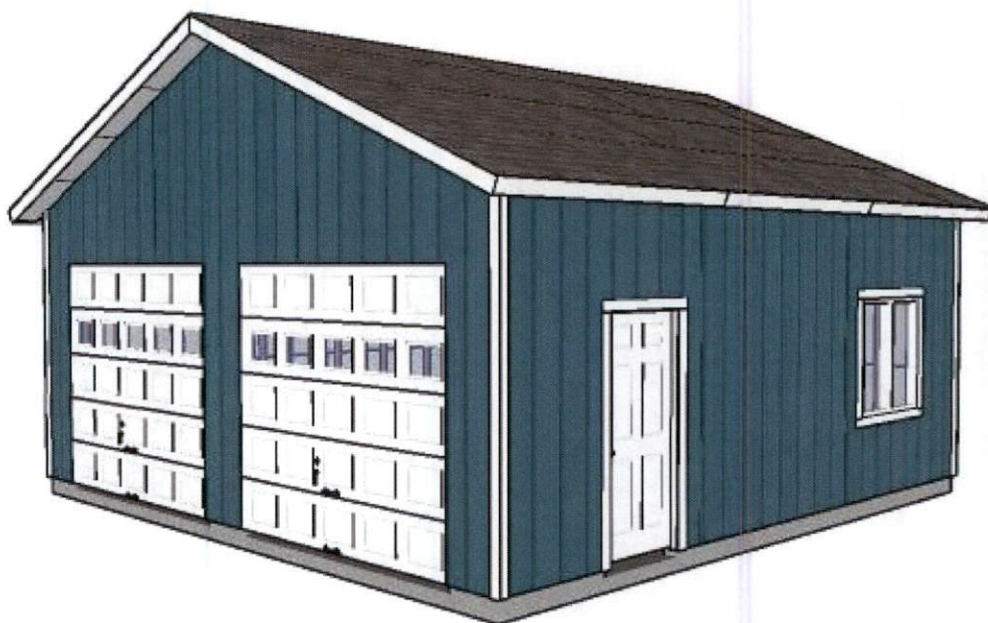
*Front wall sheets – 24x24 Garage Plans*





### *Back wall sheets – 2 car Garage Plans*

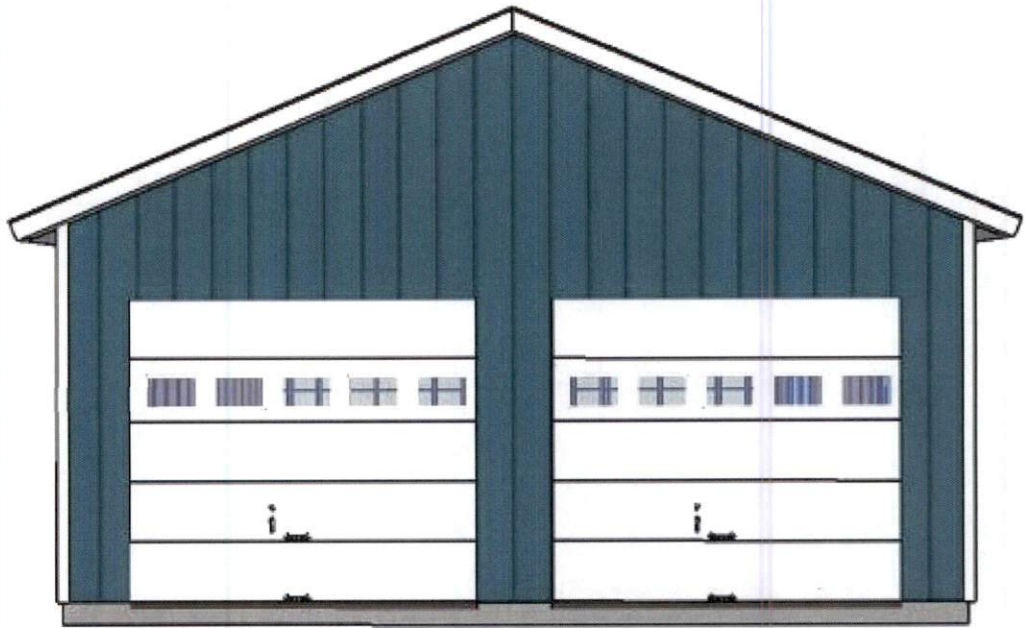
Attach the 1/2" plywood sheets to the back of the garage. Align the edges flush and insert 8d nails along the framing. Make the cuts to the gable ends.



[MyOutdoorPlans.com](http://MyOutdoorPlans.com)

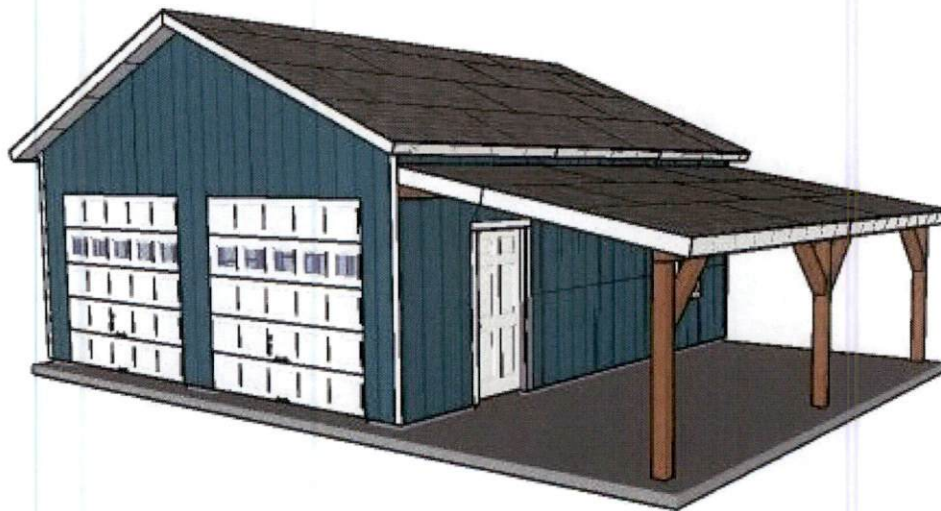
### *24x24 Garage Plans*

Make sure you take a look over **PART 2** of the garage project, where I show you how to finish the construction. If you have some framing experience and a few friends to help, you can assemble of this garage in a few days.



MyOutdoorPlans.com

*2 Car Garage Plans*



MyOutdoorPlans.com

*How to build an attached carport*

After you take a look over PART 2 of the project, I recommend you to take a look over the **attac**



**plans**, if you want to shelter an addition car, atv or motorcycles. This also works as a covered parking area. It is ideal if you want to create some shade while woodworking outside the workshop.



MyOutdoorPlans.com

*Double Garage Plans – Side View*

**Top Tip:** Use pressure treated lumber for the bottom plates, as they will be exposed to moisture. To get PREMIUM PLANS for this project, in a PDF format, please press **GET PDF PLANS** button. Thank you for the support.



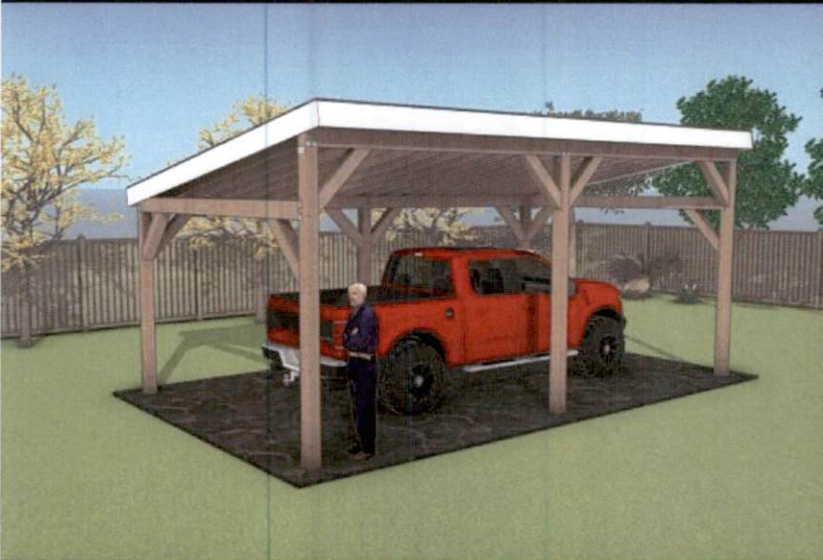
This woodworking project was about **free 24x24 double car garage plans**. If you want to see more plans, we recommend you to check out the rest of our step by step projects. LIKE us on Facebook first that gets our latest plans. Send us pictures with your plans.

Next >>

OVIDIU

6 comments | 9 ❤️ f X p ✉

## YOU MAY ALSO LIKE



DIY 14×24 LEAN TO CARPORT PLANS – PDF...

14×24 LEAN TO CARPORT PLAN





Bug MD

## 6 COMMENTS

ARCHIBALD MCKEAN



Still looking for that free PDF download for the 24x24 garage.



OVIDIU



Please read the FAQs: <http://myoutdoorplans.com/faq/>

ROGER



Do you have any plans for a 24x24 double garage like the one above, but with 8ft walls instead of



OVIDIU



No, but that's a simple modification you can make.

BOB



Great plans. If I wanted to use a single 16' garage door, what would you use for the header?

CHANCE



any plans for a 24x30?

## LEAVE A COMMENT

Your Comment

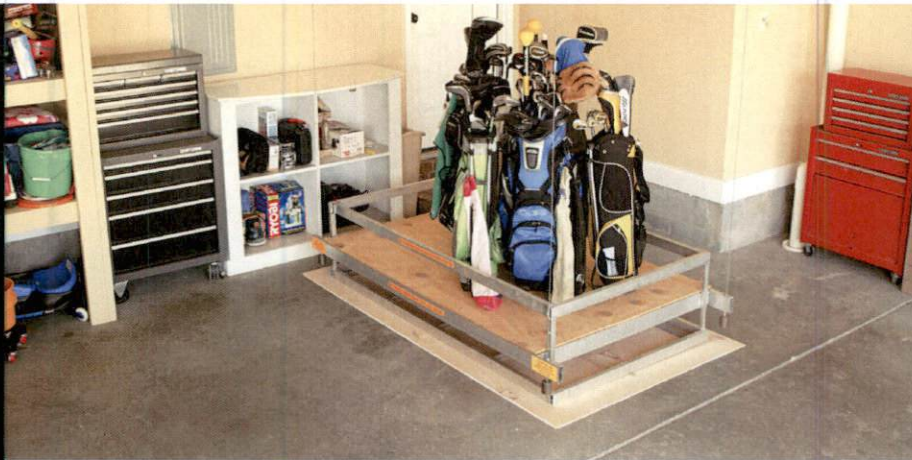
Name\*

Email\*

SUBMIT







## Easy To Install And Operate

Ad [aladdinstoragelift.com](http://aladdinstoragelift.com)

Most farmers don't use this simple trick for rodents, but did you know... [more](#)



## Easy Trick To Eliminate Mice

Ad [Varmoose](#)



## Find Your Perfect Door

Ad [krosswood.com](http://krosswood.com)



## Prefab Home Packages

Ad [Modern Prefab Homes](#)

## ACTIVATE YOUR ACCOUNT

- 1) Click [HERE](#)
- 2) Activate your account
- 3) Access your content

## Your download is ready

Ad [Stream-cloud](#)



## Smart Way To Repel Mosquitoes

Ad [Bug MD](#)



Ad



FACEBOOK



INSTAGRAM



PINTEREST

[About](#)

[FAQ – Print](#)

[Disclaimer](#)

[Terms of Use](#)

[Privacy Policy](#)

©2012-2025 - [MyOutdoorPlans.com](#) - QWY Media S

^  
[BACK TO TOP](#)