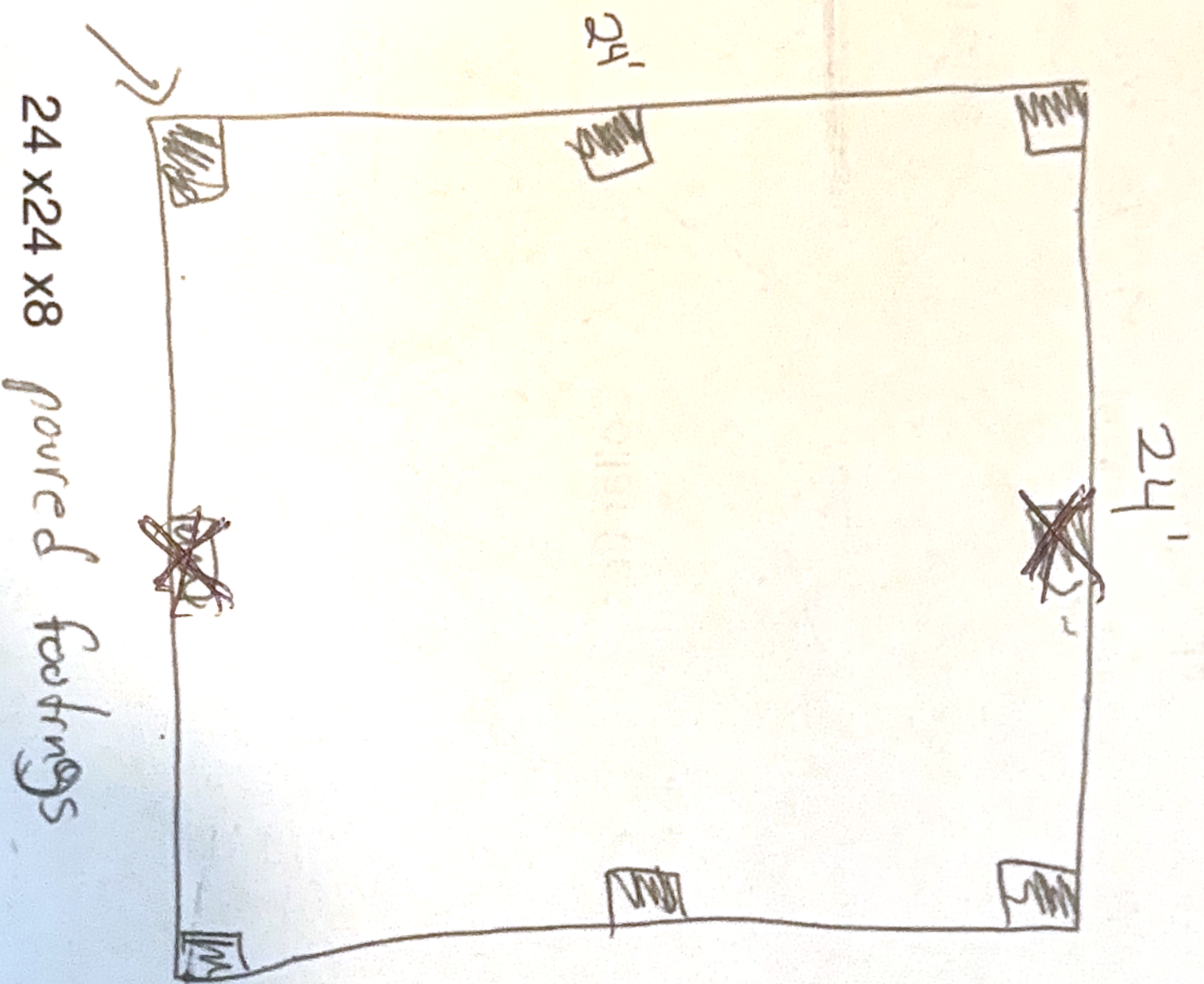


24 x 24 Carport

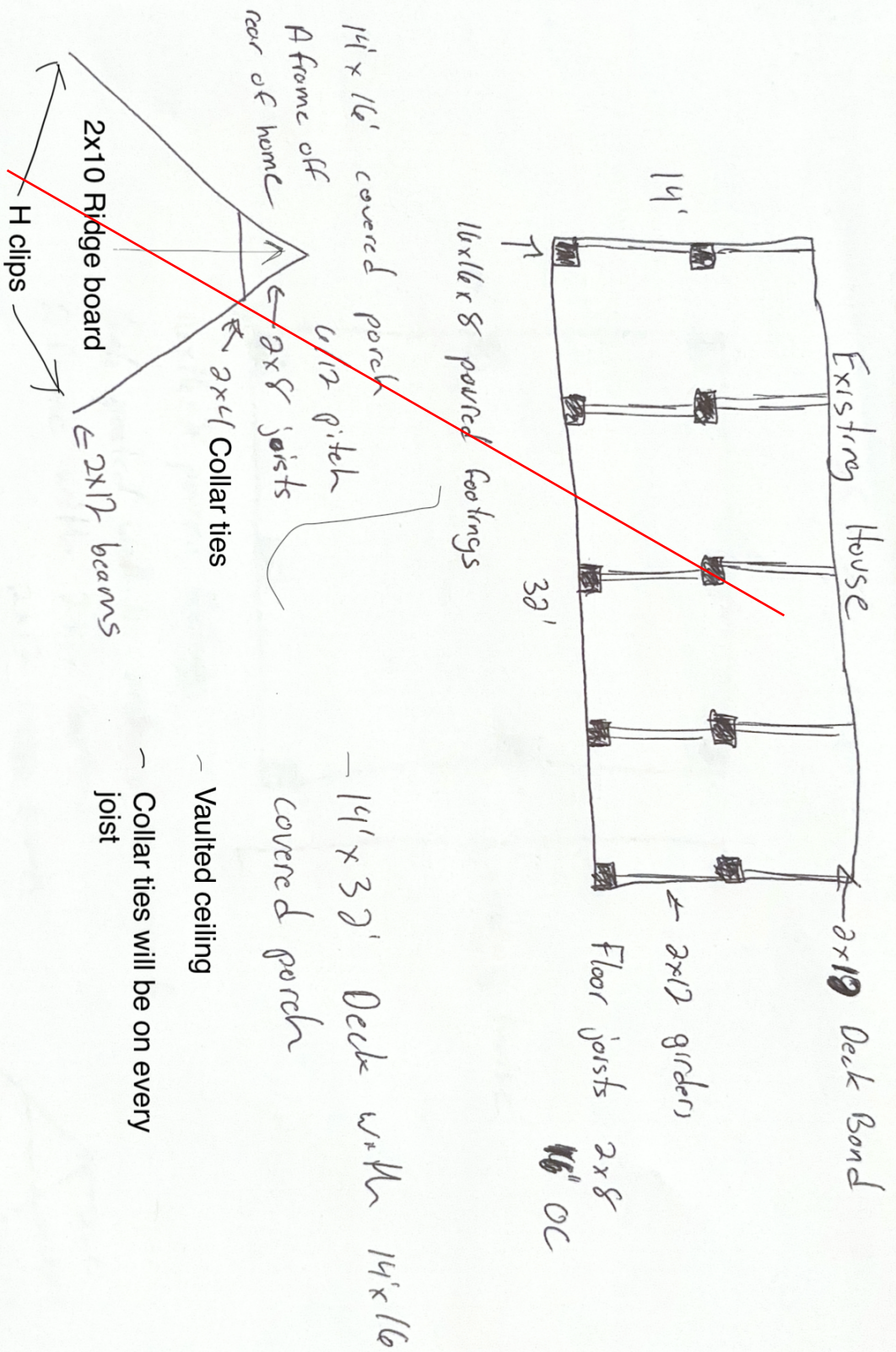


24 x 24 x 8 poured footings

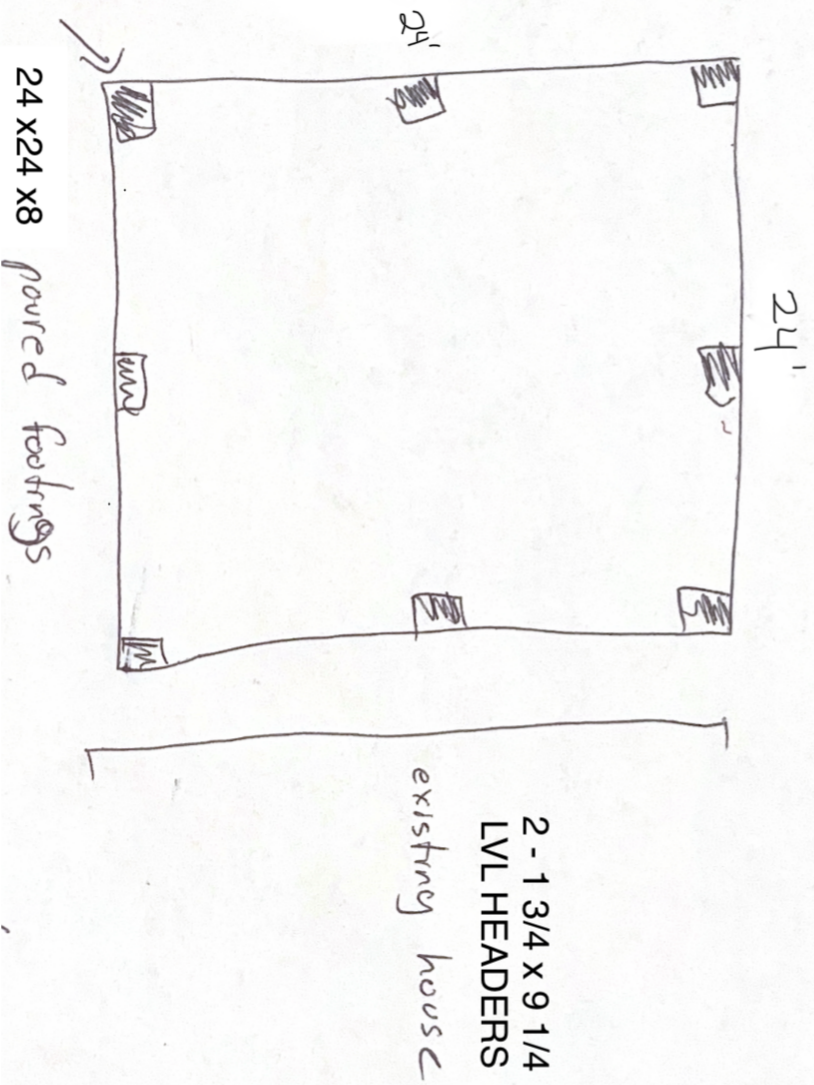
2 - 1 3/4 x 9 1/4
LVL HEADERS
existing house

6x6 post will be anchored to concrete

A frame with 6/12 roof pitch
Engineered truss system



24 x 24 Carport



6x6 post will be anchored to concrete

A frame with 6/12 roof pitch
Engineered truss system

