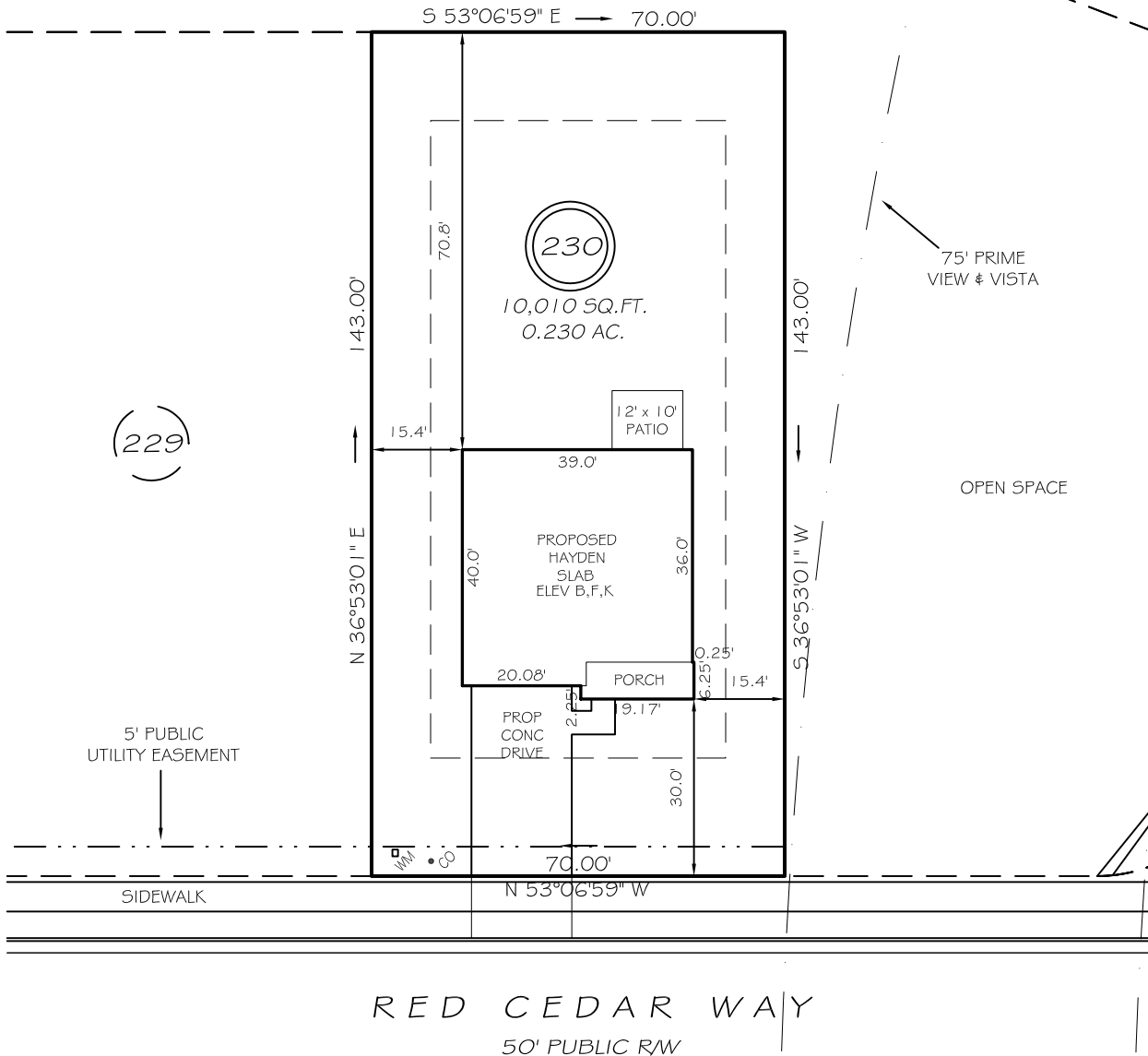


I, MICHAEL P. GRIFFIN, certify that under my direction and supervision this map was drawn from an actual field survey; that the error of closure of the survey as calculated by coordinates is 1: 10,000+; that the area shown hereon was calculated by coordinates. Dashed lines shown hereon were not surveyed.

Witness my hand and seal this day of MONTH 2021.

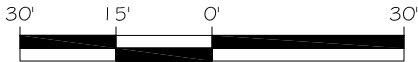


BNJ 2021 PGS 457/443
HARNETT CO. REGISTRY



IMPERVIOUS AREAS	
HOUSE	1 604 SQ. FT.
DRIVE & WALKS	586 SQ. FT.
PATIO	1 20 SQ. FT.
TOTAL	23 10 SQ. FT.
ALLOWED	2360 SQ. FT.

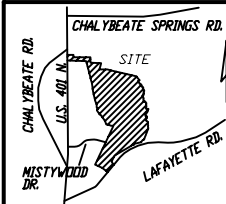
SETBACKS	
FRONT	20'
REAR	15'
SIDE	10'
CORNER SIDE	15'



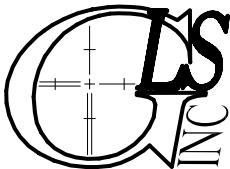
GRAPHIC SCALE
1"=30'

LEGEND

EIP	EXISTING IRON PIPE	FES	FLARED END SECTION
IPS	IRON PIPE SET	WM	WATER METER
R/W	RIGHT OF WAY	CO	CLEAN OUT
N/F	NOW OR FORMERLY	FH	FIRE HYDRANT
EIS	EXISTING IRON STAKE	CB	CATCH BASIN



PRELIMINARY
NOT FOR RECORDATION,
SALES OR CONVEYANCE



GRIFFIN LAND SURVEYING, INC.

P. O. BOX 148
FUQUAY-VARINA, NC 27526
(919) - 567-1963

FIRM LIC.# C-1345

PLOT PLAN
FOR

D. R. HORTON

WOODGROVE
LOT 230

RED CEDAR WAY
NORTH CAROLINA
HARNETT CO. HECTOR'S CREEK TWSHP

DRAWN BY KDF

DATE 9/20/21

CHECKED BY MPG

SCALE 1" = 30'