



November 11, 2025

Smith Woodworks, Inc.  
Brandon Smith  
1607 Clayhold Rd.  
Dunn, NC 28334  
Ph: 910-890-2923  
Email:SCCBsmith@yahoo.com

Reference: Engineering Services  
553 Bumpas Creek Rd. Dunn, NC  
Project No.: DRB2501-0243\_B

As requested by the client, a representative of Tyndall Engineering & Design, PA (TE&D) has reviewed the following item(s):

- 1) New Beam/wall connection at exterior wall

The following conclusions and recommendations were noted:

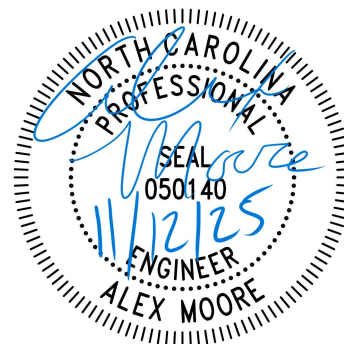
- 1) Based on our plan review and analysis, the new (2) 20" LVL is to be secured to the wall as per Figure 1 on Page 2. The reader is referred to Figure 2 on Page 3 for location clarification. The builder is to ensure that the new beam bears on an LVL bearing plate on (6)2x4 studs each end (OR) directly on top of a 3-1/2"x5-1/4" PSL column. If the PSL column option is used, the builder is to ensure that the broken top plate is secured with Simpson CS16 straps.

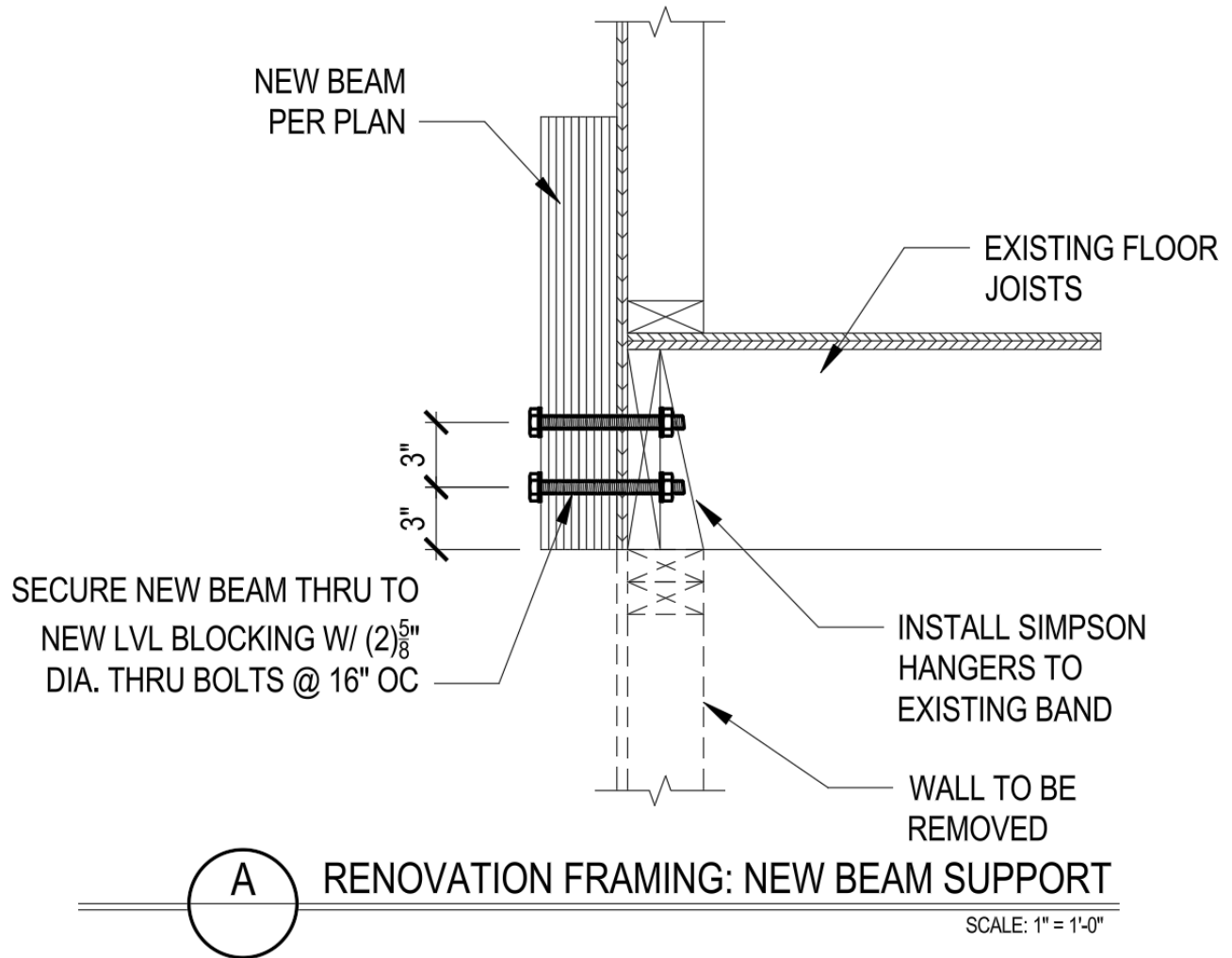
We appreciate being able to assist you during this phase of the project. If you need further assistance or require additional information, please do not hesitate to contact us.

Sincerely,  
Tyndall Engineering & Design

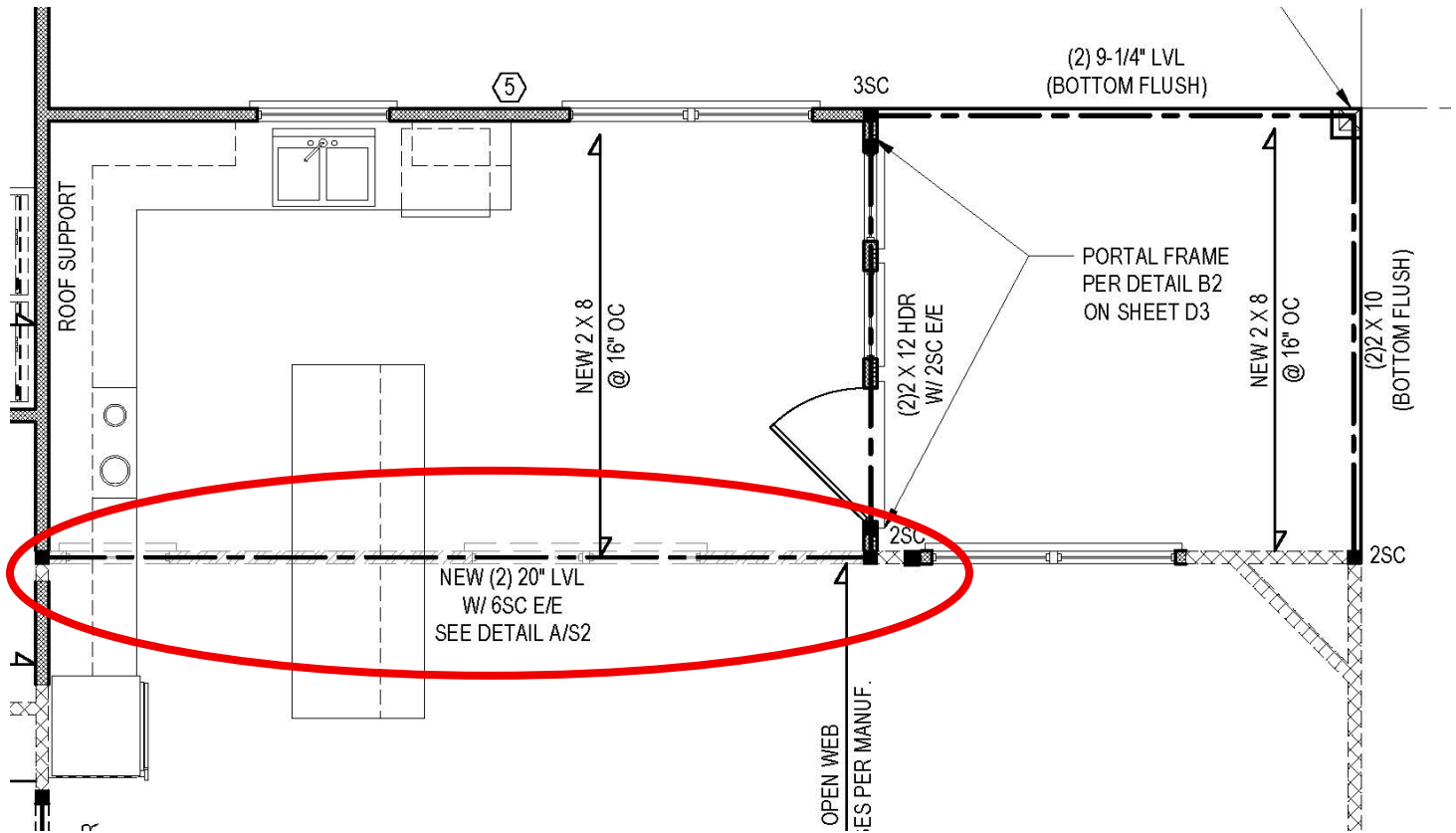
Hannah J Stepehnson  
HJS/ DRB2501-0243\_B

Alex Moore, P.E





**Figure 1**



**Figure 2:**